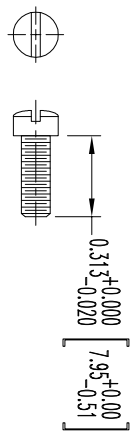
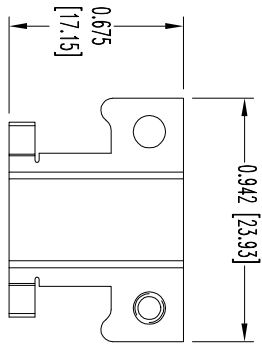
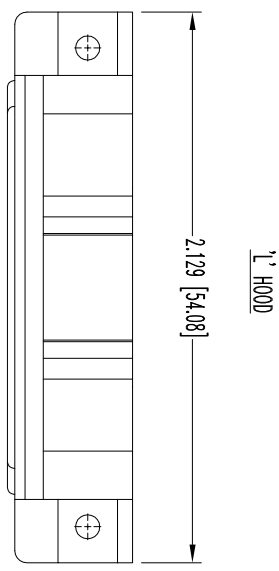
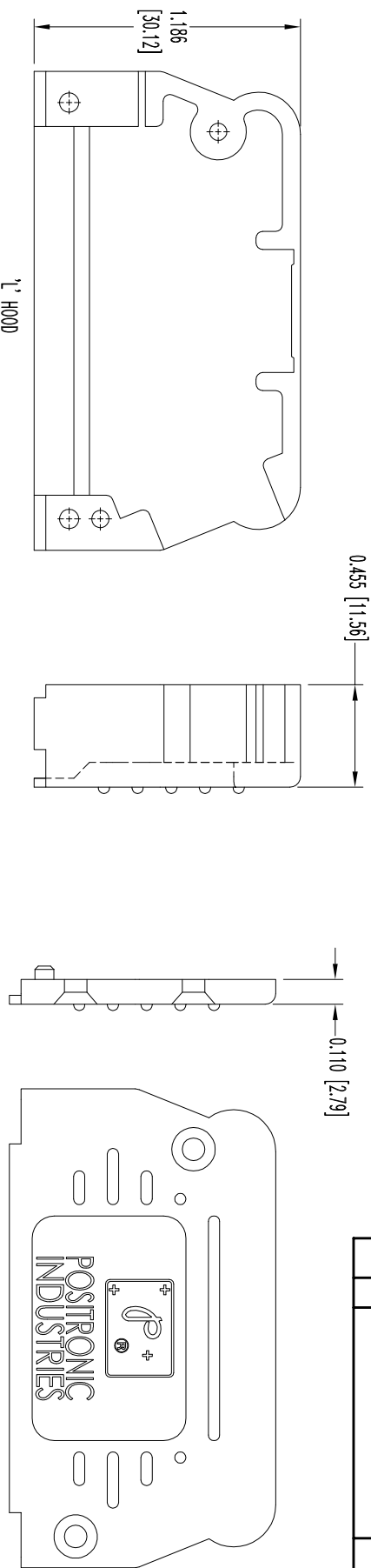


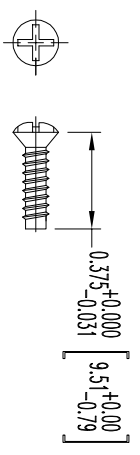
THIS DRAWING CONTAINS INFORMATION PROPRIETARY TO POSITRONIC AND ITS SUBSIDIARIES. POSITRONIC BEAVERS THE DATA ON THIS DRAWING TO BE RELIABLE SINCE THE TECHNICAL INFORMATION IS GIVEN FREE OF CHARGE. THE USER ASSUMES ALL LIABILITY FOR THE USE OF THIS INFORMATION AND RISK. POSITRONIC ASSUMES NO RESPONSIBILITY FOR RESULTS OBTAINED OR DAMAGES INCURRED FROM USE OF SUCH INFORMATION IN WHOLE OR IN PART.

DATE	REV	REVISION RECORD	APP	DR	CK
10-07	NC	ECO 52855	BP	ND	BP

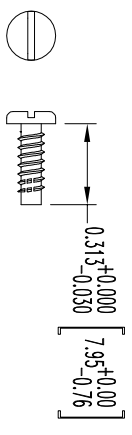
SK19723



2X CABLE CLAMP SCREW




2X COVER SCREW



2X MOUNTING SCREW

- NOTES:
1. MATERIALS AND FINISHES:  
HOOD: GLASS-FILLED POLYESTER, UL 94V-0.  
CABLE CLAMPS: STEEL WITH NICKEL PLATE.  
CABLE CLAMP SCREWS: BRASS, ZINC PLATE WITH CHROMATE SEAL.  
SCREWS: STEEL, ZINC PLATE WITH CHROMATE SEAL.
  2. DETAILED PRODUCT, MECHANICAL, AND ELECTRICAL INFORMATION IS AVAILABLE IN THE LATEST D-SUB ACCESSORY PRODUCT PUBLICATION AT [CONNECTPOSITRONIC.COM](http://CONNECTPOSITRONIC.COM)
  3. DIMENSIONS ARE IN INCHES [MILLIMETERS].

 <p><b>POSITRONIC INDUSTRIES INC.</b> www.connectpositronic.com</p>		SCALE		DRAWN BY	
		D-SUB		ND	
DATE		DRAWING NUMBER		REV.	
10-07-16		SK19723		NC	
TOLERANCES UNLESS OTHERWISE SPECIFIED:		DECIMAL TOL.		ANGULAR TOL.	
		± 0.015 [0.38]		± 5°	
		TITLE		FSCM 28198	
		D250001L00		APPROVED BY	
				BP	