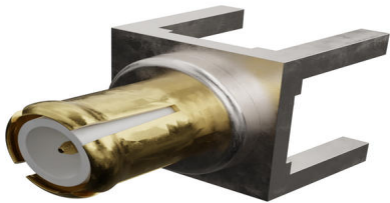




**Part Number :** [734152450](#)  
**Product Description :** MCX Plug, Straight, PCB  
Receptacle, Throug Hole, Brass Body, Tin (Sn) Plated,  
50 Ohms  
**Series Number :** 73366  
**Status :** Active  
**Product Category :** RF / Coaxial Connectors  
**Engineering Number :** 734152540



## Documents & Resources

### Drawings

- [734152450 sd.pdf](#)
- [STEP AP242](#)
- [SOLIDWORKS](#)
- [Creo](#)

## Product Environment Compliance

### Compliance

GADSL/IMDS	Not Relevant
China RoHS	Not Reviewed per SJ/T 11365-2006
EU ELV	Not Relevant
Low-Halogen Status	Not Reviewed per IEC 61249-2-21
REACH SVHC	Not Reviewed per D(2024)7663-DC (21 Jan 2025)
EU RoHS	Not Reviewed per EU 2015/863

### Compliance Statements

- EU RoHS
- REACH SVHC
- Low-Halogen

### Industry Documents

- IPC 1752A Class C
- IPC 1752A Class D
- Molex Product Compliance Declaration

- IEC-62474
- chemSHERPA (xml)

#### Substances of Interest

- PFAS

#### EU RoHS Certificate of Compliance

#### Additional Product Compliance Information

## Part Details

### General

Status	Active
Category	RF / Coaxial Connectors
Series	73366
Description	MCX Plug, Straight, PCB Receptacle, Throug Hole, Brass Body, Tin (Sn) Plated, 50 Ohms
Application	RF
Product Name	MCX
Style	PCB
Type	Microminiature
UPC	800756675046

### Electrical

Frequency	6 GHz
Impedance	50Ω
Power / Voltage	VOLTAGE: 335 Vrms@Sea Level

### Physical

Cable Attachment	N/A
Gender	Plug
Keying to Mating Part	N/A
Net Weight	0.501/g
Orientation	Straight
Packaging Type	Tray
Panel Mount	No
Panel Mount Method	N/A
PCB Mounting	Through Hole

PCB Thickness - Recommended	3.81mm
Reverse Polar	No
Wire/Cable Type	N/A

---

This document was generated on Sep 30, 2025