



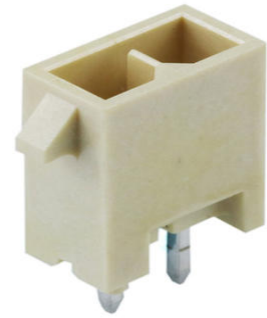
**Part Number :** [2242460212](#)

**Product Description :** Micro-Fit+ Versa Color Vertical Header, Through Hole, 3.00mm Pitch, Dual Row, 2 Circuits, 0.76µm Gold (Au) Plating, Glow-Wire Capable, Natural (White), Tray

**Series Number :** 224246

**Status :** Active

**Product Category :** PCB Headers and Receptacles



---

## Documents and Resources

### Drawings

[2242460212 sd.pdf](#)

[2068320000-PK-000.pdf](#)

### 3D Models and Design Files

[STEP AP242](#)

[SOLIDWORKS](#)

[Creo](#)

[Symbol and Footprint \(Multi-Format\)](#)

### Specifications

[2064600001-AS-000.pdf](#)

[2064600000-PS-000.pdf](#)


[2064600000-TS-000.pdf](#)

[2064600001-TS-000.pdf](#)

---

## Product Environment Compliance

### Compliance

GADSL/IMDS	Compliant with Exemption 44; 34; 33
China RoHS	 per SJ/T 11365-2006
EU ELV	Not Relevant
Low-Halogen Status	Low-Halogen per IEC 61249-2-21
REACH SVHC	Not Contained per D(2025)7771-

	DC (04 Feb 2026)
EU RoHS	Compliant per EU 2015/863

### Compliance Statements

- EU RoHS
- REACH SVHC
- Low-Halogen

### Industry Documents

- IPC 1752A Class C
- IPC 1752A Class D
- Molex Product Compliance Declaration
- IEC-62474
- chemSHERPA (xml)

### Substances of Interest

- PFAS

### EU RoHS Certificate of Compliance

### Additional Product Compliance Information

## Part Details

### General

Status	Active
Category	PCB Headers and Receptacles
Series	224246
Description	Micro-Fit+ Versa Color Vertical Header, Through Hole, 3.00mm Pitch, Dual Row, 2 Circuits, 0.76µm Gold (Au) Plating, Glow-Wire Capable, Natural (White), Tray
Application	Power, Wire-to-Board
Component Type	PCB Header
Product Name	Micro-Fit+ Versa Color
UPC	196823365386

### Agency

UL	E29179
----	--------

### Electrical

Current - Maximum per Contact	12.0A
Voltage - Maximum	600V AC (RMS)/DC

## Physical

Breakaway	No
Circuits (Loaded)	2
Circuits (maximum)	2
Color - Resin	Natural (White)
Durability (mating cycles max)	200
First Mate / Last Break	No
Flammability	94V-0
Glow-Wire Capable	Yes
Keying to Mating Part	Yes
Lock to Mating Part	Yes
Material - Metal	High Copper Alloy
Material - Plating Mating	Gold
Material - Plating Termination	Matte Tin
Material - Resin	Liquid Crystal Polymer (LCP)
Net Weight	0.317/g
Number of Rows	2
Orientation	Vertical
Packaging Type	Tray
PCB Thickness - Recommended	1.57mm
PC Tail Length	3.18mm
Pitch - Mating Interface	3.00mm
Pitch - Termination Interface	3.00mm
Plating min - Mating	0.760µm
Polarized to Mating Part	Yes
Polarized to PCB	Yes
Shrouded	Shrouded
Temperature Range - Operating	-40° to +125°C
Termination Interface Style	Through Hole

---

## Mates With / Use With

## Mates with Part(s)

Description	Part Number
Micro-Fit+ Dual Row Receptacle Housings	<u>206461</u>

---

This document was generated on May 19, 2026