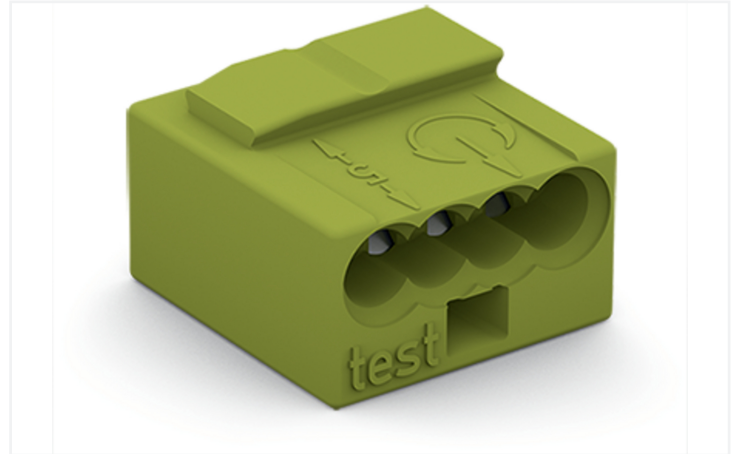


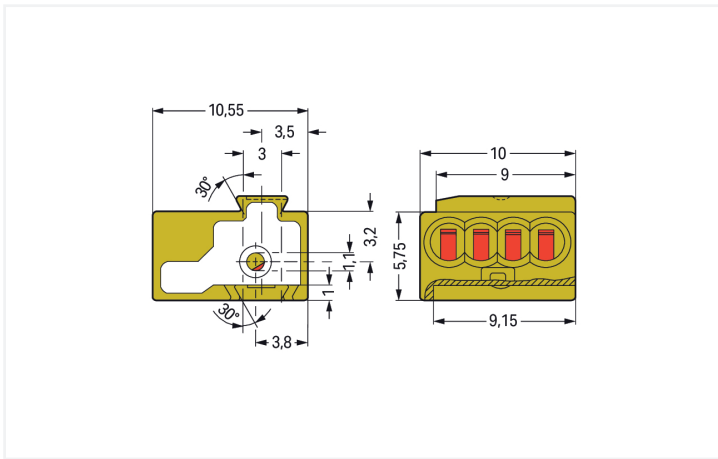
## Data Sheet | Item Number: 243-724

4-conductor female plug; PUSH WIRE®; 0.8 mm Ø; Pin spacing 5.75 mm; 1-pole; for individual solder pins; light green

<https://www.wago.com/243-724>



Color: ■ light green



Dimensions in mm

Pluggable pcb terminal block, 243 Series, light green

Pluggable pcb terminal block (item number 243-724) provides fault-free electrical installations. Ensure that the strip lengths are between 5 and 6 mm when connecting conductors to pluggable pcb terminal block. This product features one conductor terminal and utilizes PUSH WIRE®. Our PUSH WIRE® connection offers a quick and simple solution for connecting solid conductors. Dimensions: (5.75 x 10 x 10.5) mm (width x height x depth). Depending on the type of conductor, pluggable pcb terminal block is ideal for conductor cross sections ranging from 0.5 mm<sup>2</sup> to 1 mm<sup>2</sup>.

The contact surface is coated with tin.

## Notes

Variants:	Other pole numbers Other colors Mixed-color PCB connector strips Direct marking Other versions (or variants) can be requested from WAGO Sales or configured at <a href="https://configurator.wago.com/">https://configurator.wago.com/</a> .
-----------	--

## Electrical data

Ratings per	IEC/EN 60664-1			Approvals per	UL 1059		
Overtoltage category	III	III	II	Use group	B	C	D
Pollution degree	3	2	2	Rated voltage	150 V	-	150 V
Nominal voltage	250 V	320 V	630 V	Rated current	7 A	-	7 A
Rated impulse withstand voltage	4 kV	4 kV	4 kV				
Rated current	6 A	6 A	6 A				

Approvals per	CSA		
Use group	B	C	D
Rated voltage	150 V	-	150 V
Rated current	7 A	-	7 A

## Connection Data

Clamping units	4	<b>Connection 1</b>	
Total number of potentials	1	Connection technology	PUSH WIRE®
Number of connection types	1	Connectable conductor materials	Copper
Number of levels	1	Solid conductor	0.5 ... 1 mm <sup>2</sup> / 24 ... 18 AWG
		Conductor diameter	0.5 ... 1 mm / 24 ... 18 AWG
		Strip length	5 ... 6 mm / 0.2 ... 0.24 inches
		Conductor connection direction to PCB	0°
		Pole number	1

## Physical data

Pin spacing	5.75 mm / 0.226 inches
Width	5.75 mm / 0.226 inches
Height	10 mm / 0.394 inches
Depth	10.5 mm / 0.413 inches
Solder pin length	4.5 mm
Solder pin diameter	1 mm
Drilled hole diameter	1.2 (-0.05 ... +0.05) mm

## Plug-in connection

Contact type (pluggable connector)	Female connector/socket
Connector (connection type)	for PCB
Mating direction to the PCB	90°

### Material data

Note (material data)	<a href="#">Information on material specifications can be found here</a>
Color	light green
Material group	I
Insulation material (main housing)	Polyamide (PA66)
Flammability class per UL94	V0
Clamping spring material	Copper alloy
Contact material	Electrolytic copper (E <sub>Cu</sub> )
Contact Plating	Tin
Fire load	0.011 MJ
Weight	0.7 g

### Environmental requirements

Limit temperature range	-60 ... +105 °C
Continuous operating temperature	-60 °C

### Commercial data

PU (SPU)	400 pcs
Packaging type	Box
Country of origin	DE
GTIN	4044918440998
Customs tariff number	85366990990

### Product Classification

UNSPSC	39121409
eCl@ss 10.0	27-44-04-01
eCl@ss 9.0	27-44-04-01
ETIM 9.0	EC002643
ETIM 10.0	EC002643
ECCN	NO US CLASSIFICATION

### Environmental Product Compliance

RoHS Compliance Status	Compliant, No Exemption
------------------------	-------------------------

### Approvals / Certificates

#### General approvals



Approval	Standard	Certificate Name
CCA DEKRA Certification B.V.	EN 60998	NTR NL 7812
CSA DEKRA Certification B.V.	C22.2	70048857
KEMA/KEUR DEKRA Certification B.V.	EN 60998	71-112493
UR Underwriters Laboratories Inc.	UL 1059	E45172

#### Declarations of conformity and manufacturer's declarations

Approval	Standard	Certificate Name
EU-Declaration of Conformity WAGO GmbH & Co. KG	-	-
UK-Declaration of Conformity WAGO GmbH & Co. KG	-	-

**Approvals for marine applications**



Approval	Standard	Certificate Name
ABS American Bureau of Ship- ping	-	23-2417173-PDA

**Downloads**

**Environmental Product Compliance**

Compliance Search
Environmental Product Compliance 243-724

**Documentation**

Additional Information
Technical Section 03.04.2019 pdf 2027.26 KB

**CAD/CAE-Data**

CAD data
2D/3D Models 243-724

CAE data
EPLAN Data Portal 243-724
ZUKEN Portal 243-724

**1 Compatible Products**

**1.1 Required Accessories**

**1.1.1 Male connector**

**1.1.1.1 Solder pin**



**Item No.: 243-131**  
THT single pin; silver-colored

## 1.2 Optional Accessories

### 1.2.1 Marking

#### 1.2.1.1 Marking strip

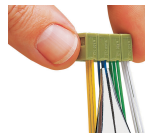
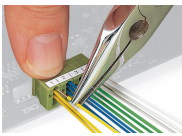


**Item No.: 210-332/575-103**

Marking strips; as a DIN A4 sheet; MARKED;  
1-12 (160x); Height of marker strip: 3 mm;  
Strip length 182 mm; Horizontal marking;  
Self-adhesive; white

## Installation Notes

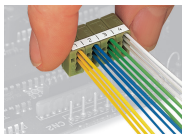
### Conductor termination



Inserting a conductor using pliers until it hits the backstop – directly on the PCB or wiring prior to mounting on PCB.

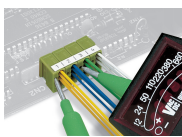
Removing a conductor using pliers – twisting alternately left and right – 243 Series

## Installation



Removing a PCB connector strip to replace the board.

## Testing



Testing – 243 Series