



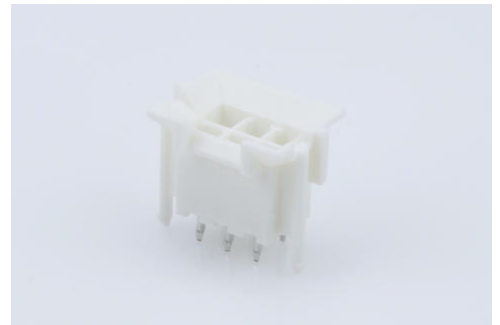
Part Number : [460110602](#)

Product Description : Mini-Fit Plus Header, 4.20mm Pitch, Dual Row, Vertical, Blind Mating, 6 Circuits, with Snap-in Plastic Peg PCB Lock, Nylon 6/6 UL 94V-0, Matte Tin (Sn) Plating, Halogen Free

Series Number : 46011

Status : Active

Product Category : PCB Headers and Receptacles



Documents and Resources

Drawings

[460110602_sd.pdf](#)

[PK-42440-001-001.pdf](#)

3D Models and Design Files

[STEP AP242](#)

[SOLIDWORKS](#)

[Creo](#)

[Symbol and Footprint \(Multi-Format\)](#)


[SYM-46011-060X-001.zip](#)

Specifications

[PS-45750-001-001.pdf](#)

Product Environment Compliance

Compliance

GADSL/IMDS	Not Relevant
China RoHS	 per SJ/T 11365-2006
EU ELV	Not Relevant
Low-Halogen Status	Low-Halogen per IEC 61249-2-21
REACH SVHC	Not Contained per D(2025)6375-DC (05 Nov 2025)
EU RoHS	Compliant per EU 2015/863

Compliance Statements

- EU RoHS
- REACH SVHC
- Low-Halogen

Industry Documents

- IPC 1752A Class C
- IPC 1752A Class D
- Molex Product Compliance Declaration
- IEC-62474
- chemSHERPA (xml)

Substances of Interest

- PFAS

EU RoHS Certificate of Compliance

Additional Product Compliance Information

Part Details

General

Status	Active
Category	PCB Headers and Receptacles
Series	46011
Description	Mini-Fit Plus Header, 4.20mm Pitch, Dual Row, Vertical, Blind Mating, 6 Circuits, with Snap-in Plastic Peg PCB Lock, Nylon 6/6 UL 94V-0, Matte Tin (Sn) Plating, Halogen Free
Application	Board-to-Board, Power, Wire-to-Board
Comments	Current = 13A max. per circuit when header is mated to a receptacle loaded with 45750 Mini-Fit Plus HCS Crimp Terminal Crimped to 16 AWG wire. See Molex product specification PS-45750-001 for additional current de-rating information.
Component Type	PCB Header
Product Name	Mini-Fit Plus
UPC	822350726009

Agency

UL	E29179
----	--------

Electrical

Current - Maximum per Contact	13.0A
Voltage - Maximum	600V

Physical

Breakaway	No
Circuits (Loaded)	6
Circuits (maximum)	6
Color - Resin	Natural
Durability (mating cycles max)	30
First Mate / Last Break	No
Glow-Wire Capable	Yes
Guide to Mating Part	Yes
Keying to Mating Part	None
Lock to Mating Part	Yes
Material - Metal	Copper Alloy
Material - Plating Mating	Matte Tin
Material - Plating Termination	Matte Tin
Material - Resin	Nylon
Net Weight	2.032/g
Number of Rows	2
Orientation	Vertical
Packaging Type	Tray
PCB Locator	No
PCB Retention	Yes
PCB Thickness - Recommended	1.78mm
PC Tail Length	3.50mm
Pitch - Mating Interface	4.20mm
Pitch - Termination Interface	4.20mm
Plating min - Mating	2.540µm
Plating min - Termination	2.540µm
Polarized to Mating Part	Yes

Polarized to PCB	Yes
Shrouded	Fully
Stackable	No
Temperature Range - Operating	-40° to +105°C
Termination Interface Style	Through Hole

Solder Process Data

Max-Duration	5
Lead-Free Process Capability	WAVE
Max-Cycle	1
Max-Temp	240

Mates With / Use With

Mates with Part(s)

Description	Part Number
Mini-Fit BMI Receptacle Housing, 4.20mm Pitch, Dual Row with Panel Mount Ears, Nylon, UL 94V-0, 6 Circuits	<u>15060061</u>
Mini-Fit Jr. Receptacle Housing, Dual Row, 6 Circuits, UL 94V-0, Natural	<u>39012065</u>
Mini-Fit Plus PCB Receptacle, 4.20mm Pitch, Dual Row, Vertical, Blind Mating, 6 Circuits, with Snap-in Plastic Peg PCB Lock, PA Polyamide Nylon 6/6, UL 94V-0, Tin (Sn) Over Nickel (Ni) Plating	<u>460100621</u>
Mini-Fit BMI Receptacle Housing, 4.20mm Pitch, Dual Row, Panel Mount, Slide-and-Lock, Nylon 6/6 UL 94V-0, 6 Circuits	<u>445160003</u>

This document was generated on Dec 16, 2025