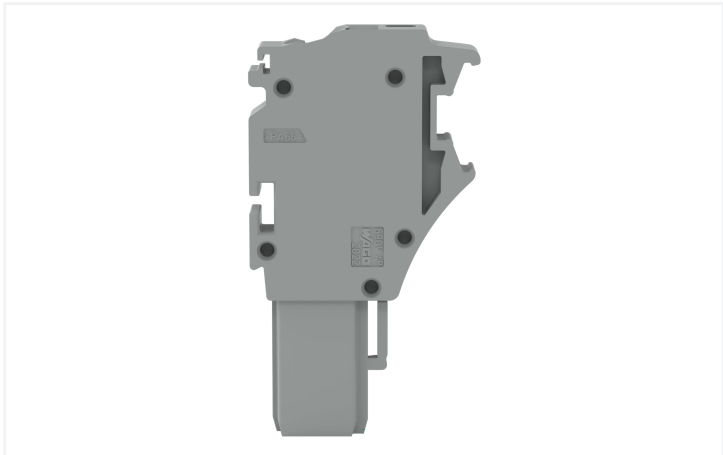
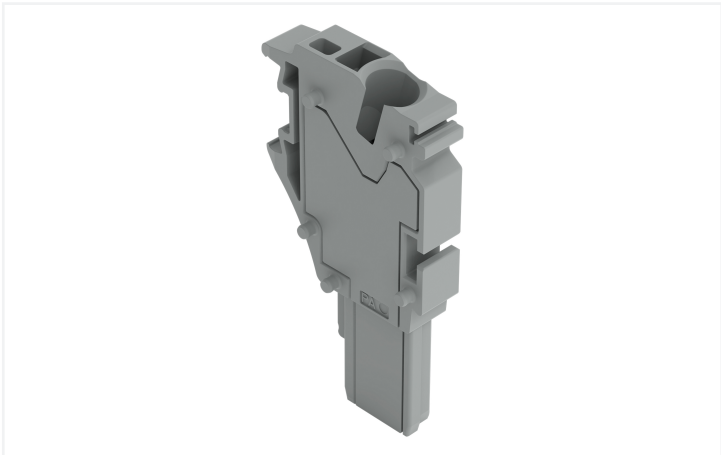


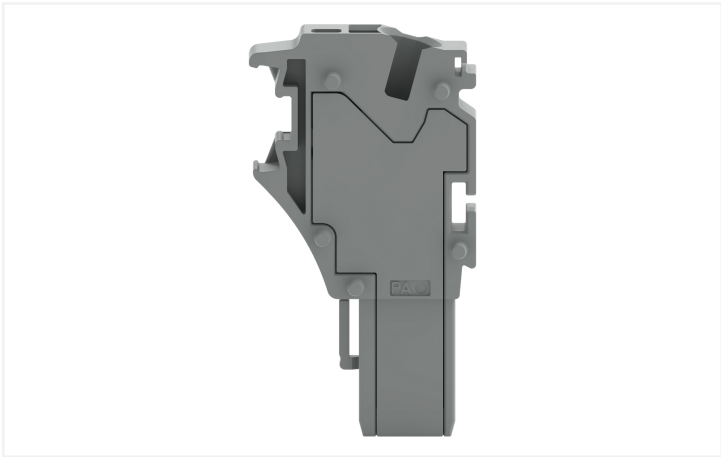
Data Sheet | Item Number: 2022-171

Center module for 1-conductor female connector; Push-in CAGE CLAMP®; 4 mm²;
Pin spacing 5.2 mm; 1-pole; 4,00 mm²; gray

<https://www.wago.com/2022-171>



Color: ■ gray



Female connector, 2022 Series, gray

This female connector (item number 2022-171) simplifies electrical installations. Pluggable rail-mount terminal blocks are mainly used in switchgear units and control systems (e.g., in railroad technology). They are essentially a combination of rail-mount terminal blocks and pluggable connectors. You can also pre-assemble installations thanks to the variable wiring system. This saves both time and money during manufacture, installation, operation, and maintenance. Our pluggable rail-mount terminal block is rated for 690 V and is designed to handle a rated current of up to 24 A. Strip lengths must be between 10 mm and 12 mm when connecting conductors to this female connector. This product features conductor terminals and utilizes Push-in CAGE CLAMP®. Our Push-in CAGE CLAMP® is a universal, maintenance-free connection solution for all conductor types, featuring a winning design: It allows direct insertion of both solid and fine-stranded conductors with ferrules without needing tools. No preparation is required; for example, crimping the conductor's ferrule is not necessary. The item's dimensions are 5.2 x 40.5 x 22.4 mm (width x height x depth). Depending on the type of conductor, this female connector is suitable for conductor cross sections ranging from 0.25 mm² to 4 mm². There is one clamping point available that you can use to connect a single potential / one pole. The gray housing is made of polyamide (PA66) for insulation. This female connector/socket is operated with an operating tool. The front-entry wiring makes it possible to connect copper conductors.

Notes	
Safety Information	According to EN 61984, pluggable connectors without current interrupting capacity must not be mated or unmated when live or under load.



Electrical data

Ratings per IEC/EN 61984				Approvals per UL 1059			
Overvoltage category	III	III	II	Use group	B	C	D
Pollution degree	3	2	2	Rated voltage	600 V	600 V	-
Nominal voltage	690 V	-	-	Rated current	20 A	20 A	-
Rated impulse withstand voltage	6 kV	-	-				
Rated current	24 A	-	-				
Current at conductor cross-section (max.) mm²	32 A	-	-				

Approvals per CSA 22.2 No 158			
Use group	B	C	D
Rated voltage	-	600 V	-
Rated current	-	20 A	-

Connection data

Clamping units	1	Connection 1 Connection technologyPush-in CAGE CLAMP® Actuation typeOperating tool Connectable conductor materialsCopper Nominal cross-section2.5 mm² Solid conductor0.25 ... 4 mm² / 22 ... 12 AWG Solid conductor; push-in termination0.75 ... 4 mm² / 18 ... 12 AWG Fine-stranded conductor0.25 ... 4 mm² / 22 ... 12 AWG Fine-stranded conductor; with insulated ferrule0.25 ... 2.5 mm² / 22 ... 14 AWG Fine-stranded conductor; with ferrule; push-in termination1 ... 2.5 mm² / 18 ... 14 AWG Note (conductor cross-section)Depending on the conductor characteristic, a conductor with a smaller cross-section can also be inserted via push-in termination. Strip length10 ... 12 mm / 0.39 ... 0.47 inches Pole number1 Wiring directionFront-entry wiring
Total number of potentials	1	

Physical data

Width	5.2 mm / 0.205 inches
Height	40.5 mm / 1.594 inches
Depth	22.4 mm / 0.882 inches

Mechanical data

Variable coding	Yes
Marking level	Side marking
Anti-rotation protection	Yes



Plug-in connection	
Contact type (pluggable connector)	Female connector/socket
Connector (connection type)	for conductor
Mismating protection	No
Plugging without loss of pin spacing	Yes

Material data	
Note (material data)	Information on material specifications can be found here
Color	gray
Material group	I
Insulation material (main housing)	Polyamide (PA66)
Flammability class per UL94	V0
Fire load	0.063 MJ
Weight	3.5 g

Environmental requirements	
Processing temperature	-35 ... +85 °C
Continuous operating temperature	-60 ... +105 °C
Environmental Testing (Environmental Conditions)	
Test specification Railway applications – Rolling stock – Electronic equipment	DIN EN 50155 (VDE 0115-200):2022-06
Test procedure Railway applications – Rolling stock equipment – Shock and vibration tests	DIN EN 61373 (VDE 0115-0106):2011-04
Spectrum/Installation location	Service life test, Category 1, Class A/B
Function test with noise-like vibration	Test passed according to Section 8 of the standard
Frequency	f ₁ = 5 Hz to f ₂ = 150 Hz
Acceleration	0.101g (highest test level used for all axes)
Test duration per axis	10 min.
Test directions	X, Y and Z axes
Monitoring for contact faults/interruptions	Passed
Voltage drop measurement before and after each axis	Passed
Simulated service life test through increased levels of noise-like vibration	Test passed according to Section 9 of the standard
Frequency	f ₁ = 5 Hz to f ₂ = 150 Hz
Acceleration	0.572g (highest test level used for all axes)
Test duration per axis	5 h
Test directions	X, Y and Z axes
Extended test scope: Monitoring for contact faults/interruptions	Passed
Extended test scope: Voltage drop measurement before and after each axis	Passed
Shock test	Test passed according to Section 10 of the standard
Shock form	Half sine
Acceleration	5g (highest test level used for all axes)
Shock duration	30 ms
Number of shocks per axis	3 pos. und 3 neg.
Test directions	X, Y and Z axes
Extended test scope: Monitoring for contact faults/interruptions	Passed
Extended test scope: Voltage drop measurement before and after each axis	Passed



Environmental Testing (Environmental Conditions)

Vibration and shock stress for rolling stock equipment Passed

Commercial data

Product Group	18 (X-COM-System)
PU (SPU)	250 pcs
Packaging type	Bag
Country of origin	CN
GTIN	4066966660012
Customs tariff number	85366990990

Product classification

UNSPSC	39121409
eCl@ss 10.0	27-14-11-06
eCl@ss 9.0	27-14-11-06
ETIM 9.0	EC001284
ETIM 8.0	EC001284
ECCN	NO US CLASSIFICATION

Environmental Product Compliance

RoHS Compliance Status	Compliant,No Exemption
------------------------	------------------------

Approvals / Certificates

General approvals



Approval	Standard	Certificate Name
CSA DEKRA Certification B.V.	C22.2 No. 158	2437422
KEMA/KEUR DEKRA Certification B.V.	EN 61984	71-101560
UL Underwriters Laboratories Inc.	UL 1059	E45172

Declarations of conformity and manufacturer's declarations



Approval	Standard	Certificate Name
EU-Declaration of Confor- mity WAGO GmbH & Co. KG	-	-
Railway WAGO GmbH & Co. KG	-	Z00004392.000
UK-Declaration of Confor- mity WAGO GmbH & Co. KG	-	-

Approvals for marine applications



Approval	Standard	Certificate Name
ABS American Bureau of Ship- ping	EN 60947	20-HG1941090-PDA
BV Bureau Veritas S.A.	EN 60947	38586/B0 BV
DNV GL Det Norske Veritas, Ger- manischer Lloyd	-	TAE00001V2



Downloads

Environmental Product Compliance

Compliance Search			
Environmental Product Compliance 2022-171			

Documentation

Bid Text			
2022-171	19.02.2019	xml 4.26 KB	
2022-171	14.05.2019	docx 16.12 KB	

CAD/CAE-Data

CAD data	
2D/3D Models 2022-171	

CAE data	
EPLAN Data Portal 2022-171	
WSCAD Universe 2022-171	
ZUKEN Portal 2022-171	

1 Compatible Products

1.1 Optional Accessories

1.1.1 Ferrule

1.1.1.1 Ferrule

Item No.: 216-241 Ferrule; Sleeve for 0.5 mm² / 20 AWG; insulated; electro-tin plated; electrolytic copper; gastight crimped; acc. to DIN 46228, Part 4/09.90; white	Item No.: 216-242 Ferrule; Sleeve for 0.75 mm² / 18 AWG; insulated; electro-tin plated; electrolytic copper; gastight crimped; acc. to DIN 46228, Part 4/09.90; gray	Item No.: 216-262 Ferrule; Sleeve for 0.75 mm² / 18 AWG; insulated; electro-tin plated; electrolytic copper; gastight crimped; acc. to DIN 46228, Part 4/09.90; gray	Item No.: 216-243 Ferrule; Sleeve for 1 mm² / AWG 18; insulated; electro-tin plated; electrolytic copper; gastight crimped; acc. to DIN 46228, Part 4/09.90; red
Item No.: 216-263 Ferrule; Sleeve for 1 mm² / AWG 18; insulated; electro-tin plated; electrolytic copper; gastight crimped; acc. to DIN 46228, Part 4/09.90; red	Item No.: 216-244 Ferrule; Sleeve for 1.5 mm² / AWG 16; insulated; electro-tin plated; electrolytic copper; gastight crimped; acc. to DIN 46228, Part 4/09.90; black	Item No.: 216-264 Ferrule; Sleeve for 1.5 mm² / AWG 16; insulated; electro-tin plated; electrolytic copper; gastight crimped; acc. to DIN 46228, Part 4/09.90; black	Item No.: 216-284 Ferrule; Sleeve for 1.5 mm² / AWG 16; insulated; electro-tin plated; electrolytic copper; gastight crimped; acc. to DIN 46228, Part 4/09.90; black
Item No.: 216-246 Ferrule; Sleeve for 2.5 mm² / AWG 14; insulated; electro-tin plated; electrolytic copper; gastight crimped; acc. to DIN 46228, Part 4/09.90; blue	Item No.: 216-266 Ferrule; Sleeve for 2.5 mm² / AWG 14; insulated; electro-tin plated; electrolytic copper; gastight crimped; acc. to DIN 46228, Part 4/09.90; blue	Item No.: 216-286 Ferrule; Sleeve for 2.5 mm² / AWG 14; insulated; electro-tin plated; electrolytic copper; gastight crimped; acc. to DIN 46228, Part 4/09.90; blue	



1.1.2 Insulation stop

1.1.2.1 Insulation stop



[Item No.: 2002-171](#)
Insulation stop; 0.25 - 0.5 mm²; 5 pieces/strip; light gray



[Item No.: 2002-172](#)
Insulation stop; 0.75 - 1 mm²; 5 pieces/strip; dark gray

1.1.3 Locking system

1.1.3.1 Locking system



[Item No.: 2022-141](#)
Locking lever; gray



[Item No.: 2022-151](#)
Locking lever; gray



[Item No.: 2022-142](#)
Locking lever; orange



[Item No.: 2022-152](#)
Locking lever; orange

1.1.4 Marking

1.1.4.1 Marker



[Item No.: 793-5501](#)
WMB marking card; as card; for terminal block width 5 - 17.5 mm; stretchable 5 - 5.2 mm; plain; snap-on type; white



[Item No.: 2009-115](#)
WMB-Inline; for Smart Printer; 1500 pieces on roll; stretchable 5 - 5.2 mm; plain; snap-on type; white

1.1.4.2 Marking strip



[Item No.: 210-833](#)
Marking strips; 25 m on roll; 6 mm wide; plain; Self-adhesive; white



[Item No.: 2009-110](#)
Marking strips; for Smart Printer; on reel; not stretchable; plain; snap-on type; white



[Item No.: 210-831](#)
Marking strips; on reel; 2.3 mm wide; plain; Self-adhesive; white



[Item No.: 210-832](#)
Marking strips; on reel; 3 mm wide; plain; Self-adhesive; white



[Item No.: 210-834](#)
Marking strips; on reel; 5 mm wide; plain; Self-adhesive; white

1.1.5 Protective warning marker

1.1.5.1 Cover



[Item No.: 2002-115](#)
Protective warning marker; for 5 terminal blocks; with high-voltage symbol, black; yellow

1.1.6 Screwless end stop

1.1.6.1 Mounting accessories



Item No.: 249-117
Screwless end stop; 10 mm wide; for DIN-rail 35 x 15 and 35 x 7.5; gray



Item No.: 249-116
Screwless end stop; 6 mm wide; for DIN-rail 35 x 15 and 35 x 7.5; gray

1.1.7 Strain relief

1.1.7.1 Strain relief plate



Item No.: 734-430
Strain relief plate; for female and male connectors; 1 part; gray



Item No.: 734-328
Strain relief plate; for female and male connectors; 12.5 mm wide; 1 part; gray



Item No.: 734-329
Strain relief plate; for female and male connectors; 25 mm wide; 1 part; gray



Item No.: 734-326
Strain relief plate; for female and male connectors; 35 mm wide; 1 part; gray



Item No.: 734-327
Strain relief plate; for female and male connectors; 6 mm wide; 1 part; gray



Item No.: 734-431
Strain relief plate; for female and male connectors; 75 mm wide; 1 part; gray

1.1.8 Tool

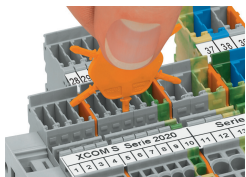
1.1.8.1 Operating tool



Item No.: 210-720
Operating tool; Blade: 3.5 x 0.5 mm; with a partially insulated shaft; multicoloured

Installation Notes

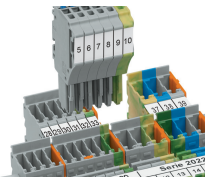
Coding



Insert coding pin into the corresponding slot and twist it off.



Coding a female plug: remove coding finger using a suitable tool.



Insert coded female plug into X-COM®S-SYSTEM terminal block assembly.