



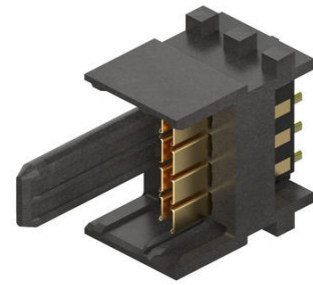
**Part Number :** [2033879011](#)

**Product Description :** Impel Test Cable Assembly, Crossover, 0.70m Length

**Series Number :** 203387

**Status :** Active

**Product Category :** High-Speed I/O Cable Assemblies



---

## Documents and Resources

### Drawings

[2033879011\\_sd.pdf](#)

---

## Product Environment Compliance

### Compliance

GADSL/IMDS	Not Relevant
China RoHS	Not Relevant
EU ELV	Not Relevant
Low-Halogen Status	Not Relevant
REACH SVHC	Not Relevant
EU RoHS	Compliant per EU 2015/863

### Compliance Statements

- EU RoHS
- REACH SVHC
- Low-Halogen

### Industry Documents

- IPC 1752A Class C
- IPC 1752A Class D
- Molex Product Compliance Declaration
- IEC-62474
- chemSHERPA (xml)

### Substances of Interest

- PFAS

### EU RoHS Certificate of Compliance

## Part Details

### General

Status	Active
Category	High-Speed I/O Cable Assemblies
Series	203387
Description	Impel Test Cable Assembly, Crossover, 0.70m Length
Assembly Configuration	Dual Ended Connectors
Connector to Connector	Impel-to-Impel
Product Name	Impel
Type	Pluggable
UPC	191128750714

### Physical

Cable Bundling	None
Cable Length	0.70m
Circuits (Loaded)	16
Circuits (maximum)	16
Color - Resin	Black
Gender	Male-Male
Material - Metal	Copper Alloy
Material - Plating Mating	Gold
Material - Resin	Liquid Crystal Polymer (LCP)
Net Weight	5.850/g
Packaging Type	Bag
Release Style	N/A
Single Ended	No
Wire/Cable Type	Twinax
Wire Size (AWG)	30