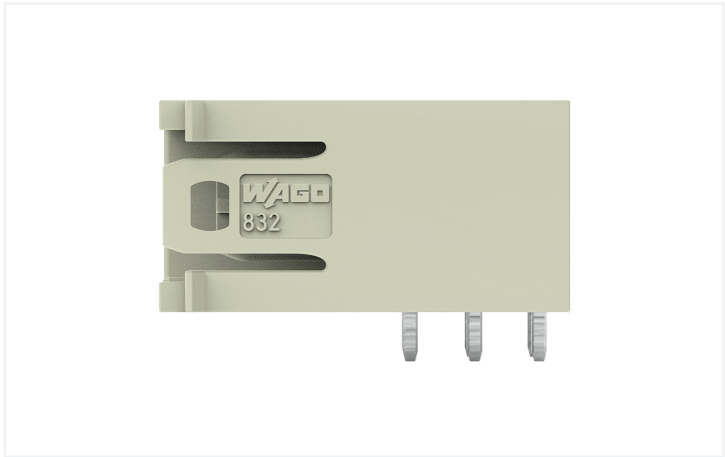
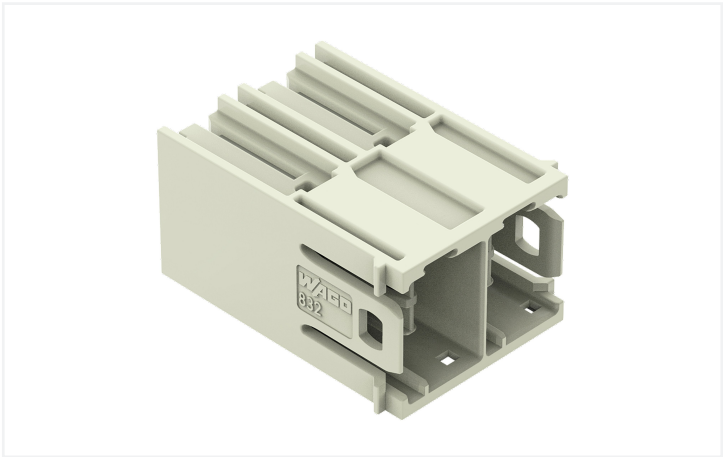


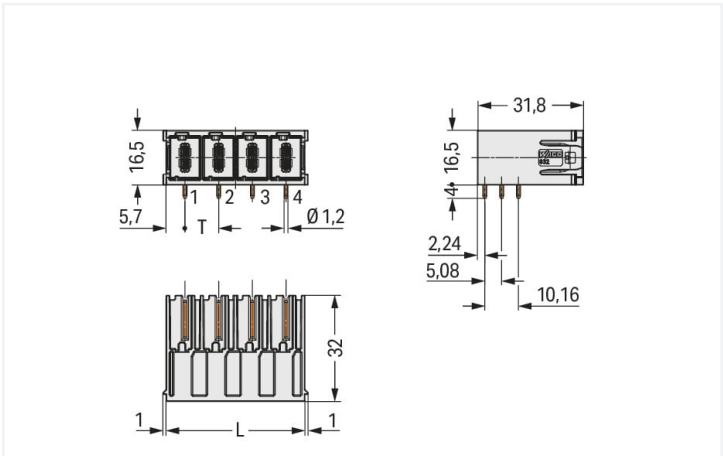
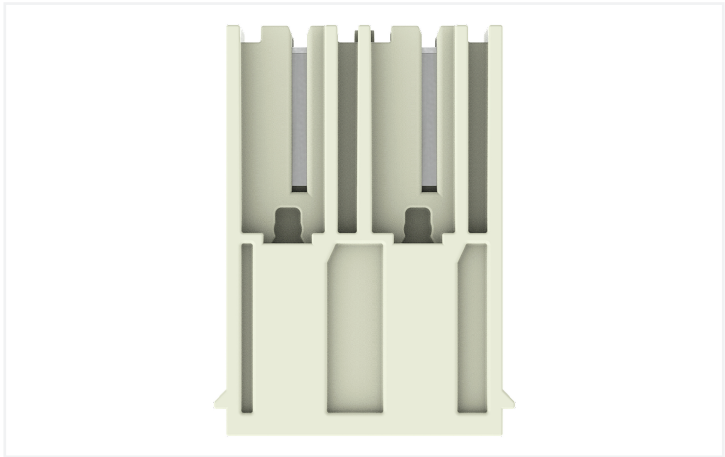
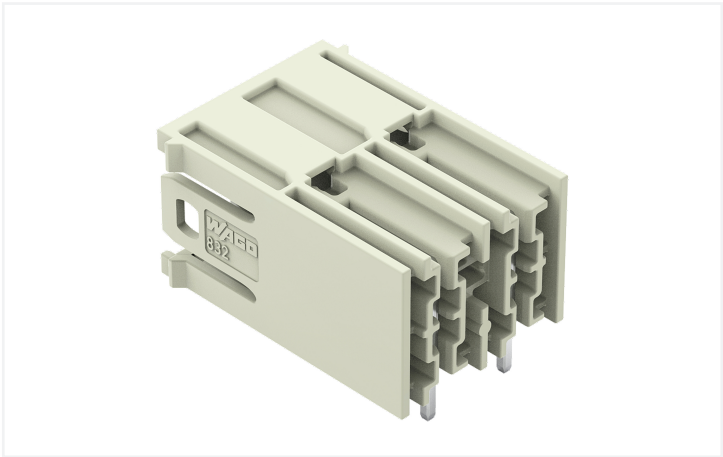
Data Sheet | Item Number: 832-3622

THT male header; 1.2 x 1.2 mm solder pin; angled; 100% protected against mis-mating; Silver-plated contacts; Pin spacing 10.16 mm; 2-pole; light gray

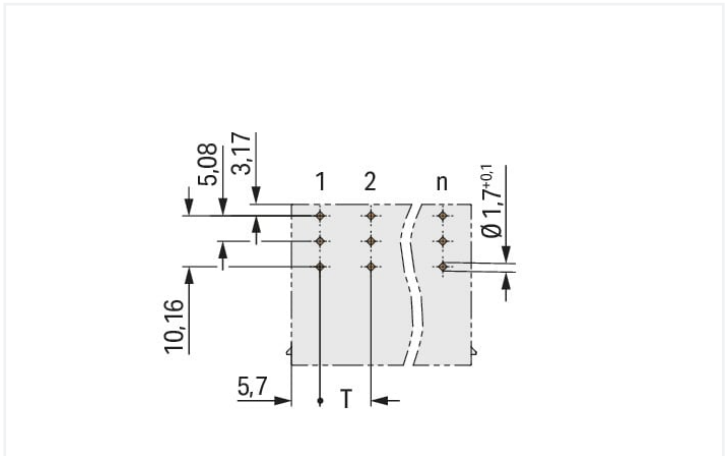
<https://www.wago.com/832-3622>



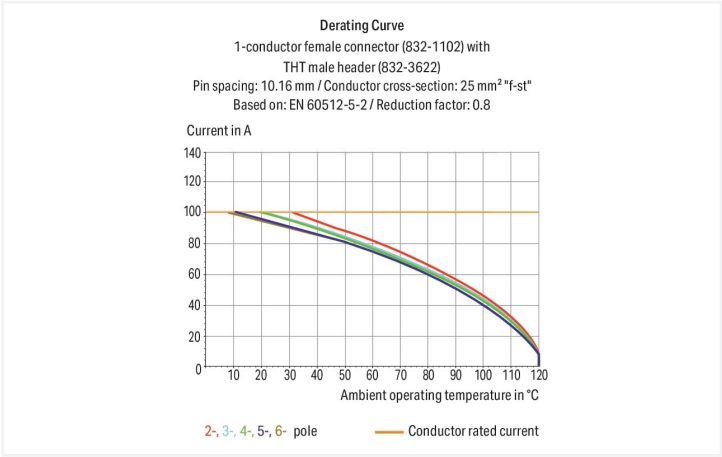
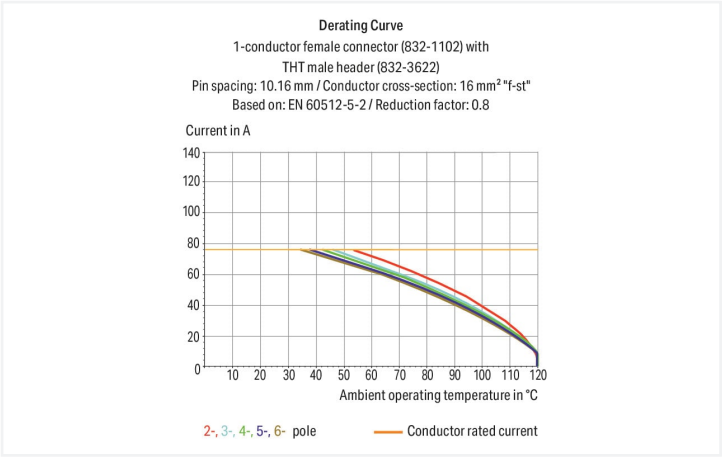
Color: ■ light gray



Dimensions in mm
L = (pole no. x pin spacing) + 1.3 mm



Dimensions in mm
L = (pole no. x pin spacing) + 1.3 mm





- Male header may be mounted horizontally or vertically via straight or angled solder pins
- Three solder pins per pole provide high electrical and mechanical stability
- Mating face (IP2XB) with higher protection against accidental contact
- 100% protected against mismatching
- Coding via coding fingers

Notes	
Safety Information	The MCS – MULTI CONNECTION SYSTEM includes connectors without breaking capacity in accordance with DIN EN 61984. When used as intended, these connectors must not be connected/disconnected when live or under load. When used as intended, these connectors must not be connected/disconnected when live or under load. The circuit design should ensure header pins, which can be touched, are not live when unmated.
Variants:	Other versions (or variants) can be requested from WAGO Sales or configured at https://configurator.wago.com/ . Other pole numbers Protection against PCB mounting errors



Electrical data				
Ratings per		IEC/EN 60664-1		
Overvoltage category	III	III	II	
Pollution degree	3	2	2	
Nominal voltage	800 V	1000 V	1000 V	
Rated surge voltage	8 kV	8 kV	8 kV	
Rated current	76 A	76 A	76 A	
Approvals per		UL 1059		
Use group		B	C	D
Rated voltage		300 V	300 V	600 V
Rated current		66 A	66 A	5 A
Approvals per		UL 1977		
Rated voltage		600 V		
Rated current		85 A		
Approvals per		CSA		
Use group		B	C	D
Rated voltage		300 V	300 V	600 V
Rated current		66 A	66 A	5 A
Connection data				
Total number of potentials	2	Connection 1		
Number of connection types	1	Pole number	2	
Number of levels	1			
Physical data				
Pin spacing	10.16 mm / 0.4 inches			
Width	21.62 mm / 0.851 inches			
Height	20.5 mm / 0.807 inches			
Height from the surface	16.5 mm / 0.65 inches			
Depth	32 mm / 1.26 inches			
Solder pin length	4 mm			
Solder pin dimensions	1.2 x 1.2 mm			
Drilled hole diameter with tolerance	1.7 ^(+0.1) mm			
Mechanical data				
Variable coding	Yes			
Anti-rotation protection	Yes			
Plug-in connection				
Contact type (pluggable connector)	Male connector/plug			
Connector (connection type)	for PCB			
Mismating protection	Yes			
Mating direction to the PCB	0 °			
PCB contact				
PCB contact	THT			
Solder pin arrangement	over the entire male connector (in-line)			
Number of solder pins per potential	3			



Material data	
Note (material data)	Information on material specifications can be found here
Color	light gray
Material group	I
Insulation material (main housing)	Polybutylene terephthalate (PBT)
Flammability class per UL94	V0
Contact material	Electrolytic copper (E _{CU})
Contact Plating	Silver
Fire load	0.226 MJ
Weight	11.1 g

Environmental requirements	
Limit temperature range	-60 ... +120 °C
Processing temperature	-35 ... +60 °C

Commercial data	
eCl@ss 10.0	27-44-04-02
eCl@ss 9.0	27-44-04-02
ETIM 8.0	EC002637
ETIM 7.0	EC002637
PU (SPU)	60 pcs
Packaging type	Box
Country of origin	PL
GTIN	4055143920773
Customs tariff number	85366930000

Environmental Product Compliance	
RoHS Compliance Status	Compliant, No Exemption

Approvals / Certificates

General approvals



Approval	Standard	Certificate Name
CB DEKRA Certification B.V.	IEC 61984	NL-53084
CSA CSA Group	C22.2	70180346
KEMA/KEUR DEKRA Certification B.V.	EN 61984	71-104731
UL Underwriters Laboratories Inc.	C22.2 No. 158	E45172



Downloads

Environmental Product Compliance

Compliance Search			
Environmental Product Compliance 832-3622			

Documentation

Additional Information			
Technical Section	03.04.2019	pdf 2027.26 KB	

CAD/CAE-Data

CAD data			
2D/3D Models 832-3622			

CAE data	
ZUKEN Portal 832-3622	

PCB Design	
Symbol and Footprint via SamacSys 832-3622	
Symbol and Footprint via Ultra Librarian 832-3622	

1 Compatible Products

1.1 System counterpart

1.1.1 Female connector/socket



[Item No.: 832-1102/320-000](#)
1-conductor female connector; lever; Push-in CAGE CLAMP®; 16 mm²; Pin spacing 10.16 mm; 2-pole; 100% protected against mismatching; Centered locking levers; Silver-plated contacts; 16,00 mm²; light gray



[Item No.: 832-1102/322-000](#)
1-conductor female connector; lever; Push-in CAGE CLAMP®; 16 mm²; Pin spacing 10.16 mm; 2-pole; 100% protected against mismatching; Centered locking levers; Silver-plated contacts; 16,00 mm²; light gray



[Item No.: 832-1102/342-000](#)
1-conductor female connector; lever; Push-in CAGE CLAMP®; 16 mm²; Pin spacing 10.16 mm; 2-pole; 100% protected against mismatching; Centered locking levers; Strain relief plate; Silver-plated contacts; 16,00 mm²; light gray



[Item No.: 832-1102/037-000](#)
1-conductor female connector; lever; Push-in CAGE CLAMP®; 16 mm²; Pin spacing 10.16 mm; 2-pole; 100% protected against mismatching; Lateral locking levers; Silver-plated contacts; 16,00 mm²; light gray



[Item No.: 832-1102/037-9037](#)
1-conductor female connector; lever; Push-in CAGE CLAMP®; 16 mm²; Pin spacing 10.16 mm; 2-pole; 100% protected against mismatching; Lateral locking levers; Silver-plated contacts; direct marking; 16,00 mm²; light gray



[Item No.: 832-1102/312-000](#)
1-conductor female connector; lever; Push-in CAGE CLAMP®; 16 mm²; Pin spacing 10.16 mm; 2-pole; 100% protected against mismatching; Lateral locking levers; Strain relief plate; Silver-plated contacts; 16,00 mm²; light gray



[Item No.: 832-1102](#)
1-conductor female connector; lever; Push-in CAGE CLAMP®; 16 mm²; Pin spacing 10.16 mm; 2-pole; 100% protected against mismatching; Silver-plated contacts; 16,00 mm²; light gray



[Item No.: 832-1102/000-9037](#)
1-conductor female connector; lever; Push-in CAGE CLAMP®; 16 mm²; Pin spacing 10.16 mm; 2-pole; 100% protected against mismatching; Silver-plated contacts; direct marking; 16,00 mm²; light gray



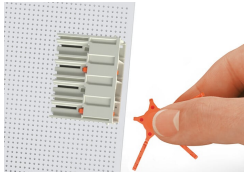
[Item No.: 832-1102/332-000](#)
1-conductor female connector; lever; Push-in CAGE CLAMP®; 16 mm²; Pin spacing 10.16 mm; 2-pole; 100% protected against mismatching; Strain relief plate; Silver-plated contacts; 16,00 mm²; light gray

1.2 Optional Accessories
1.2.1 Coding
1.2.1.1 Coding



Item No.: 832-500
Coding key carrier; orange

Installation Notes
Coding



Coding a THT male header by inserting a coding pin.