

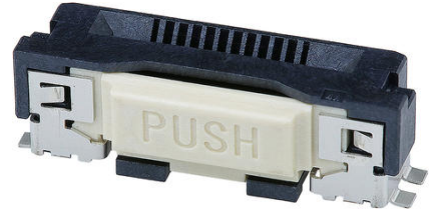
Part Number : [2004850110](#)

Product Description : Easy-On FFC/FPC One-Touch Connector, 0.50mm Pitch, Vertical, 5.60mm Height, 125°C Operating Temperature, 10 Circuits, Gold (Au) Plating

Series Number : 200485

Status : Active

Product Category : FFC / FPC Connectors



Documents and Resources

Drawings

[2004850110 sd.pdf](#)

3D Models and Design Files

[STEP AP242](#)

[SOLIDWORKS](#)

[Creo](#)

[Symbol and Footprint \(Multi-Format\)](#)

[2004850110.dxf](#)

Specifications


[2004859200-SPK-201.pdf](#)

[2004851000-PS-000.pdf](#)

[2004851000-TS-000.pdf](#)

Product Environment Compliance

Compliance

GADSL/IMDS	Compliant with Exemption 33; 44; 34
China RoHS	 per SJ/T 11365-2006
EU ELV	Not Relevant
Low-Halogen Status	Low-Halogen per IEC 61249-2-21
REACH SVHC	Not Contained per D(2025)7771-DC (04 Feb 2026)

EU RoHS

Compliant per EU 2015/863

Compliance Statements

- EU RoHS
- REACH SVHC
- Low-Halogen

Industry Documents

- IPC 1752A Class C
- IPC 1752A Class D
- Molex Product Compliance Declaration
- IEC-62474
- chemSHERPA (xml)

Substances of Interest

- PFAS

EU RoHS Certificate of ComplianceAdditional Product Compliance Information**Part Details****General**

Status	Active
Category	FFC / FPC Connectors
Series	One-Touch
Description	Easy-On FFC/FPC One-Touch Connector, 0.50mm Pitch, Vertical, 5.60mm Height, 125°C Operating Temperature, 10 Circuits, Gold (Au) Plating
Product Name	Easy-On
UPC	191130074068

Electrical

Current - Maximum per Contact	0.5A
Voltage - Maximum	50V

Physical

Actuator Type	One-Touch
Circuits (Loaded)	10
Color - Resin	Black

Contact Position	N/A
Durability (mating cycles max)	20
Mated Height	5.60mm
Material - Metal	Copper Alloy
Material - Plating Mating	Gold
Material - Resin	Liquid Crystal Polymer (LCP)
Net Weight	358.386/mg
Orientation	Vertical
Packaging Type	Embossed Tape on Reel
PCB Mounting	Surface Mount
PCB Retention	No
Pitch - Mating Interface	0.50mm
Polarized to PCB	Yes
Stackable	No
Temperature Range - Operating	-40° to +125°C
Wire/Cable Type	FFC/FPC

Solder Process Data

Lead-Free Process Capability	REFLOW
Max-Cycle	2
Max-Temp	250

Mates With / Use With

Mates with Part(s)

Description	Part Number
0.50mm Pitch Premo-Flex One-Touch FFC Jumpers with Ears	<u>15016</u>

This document was generated on May 14, 2026