

NLS-CU 3/10 SN 1000MM - Neutral busbar



0402174

<https://www.phoenixcontact.com/us/products/0402174>

Please be informed that the data shown in this PDF document is generated from our online catalog. Please find the complete data in the user documentation. Our general terms of use for downloads are valid.



Neutral busbar, DIN VDE 0611-4: 1991-02, color: silver

Commercial data

Item number	0402174
Packing unit	10 pc
Minimum order quantity	10 pc
Sales key	BE72
Product key	BE7291
Catalog page	Page 552 (C-3-2019)
GTIN	4017918001810
Weight per piece (including packing)	264 g
Weight per piece (excluding packing)	264 g
Customs tariff number	74071000
Country of origin	BG

NLS-CU 3/10 SN 1000MM - Neutral busbar



0402174

<https://www.phoenixcontact.com/us/products/0402174>

Technical data

Product properties

Product type	Neutral conductor rail
--------------	------------------------

Data management status

Article revision	02
------------------	----

Electrical properties

Nominal current I_N	140 A
-----------------------	-------

Connection data

Connection in acc. with standard	IEC / EN
Nominal current	140 A
Maximum load current	140 A

Dimensions

Width	10 mm
Height	1000 mm
Depth	3 mm
Length	1 m

Material specifications

Color	silver
-------	--------

Standards and regulations

Connection in acc. with standard	IEC / EN
Tests	DIN VDE 0611-4: 1991-02

NLS-CU 3/10 SN 1000MM - Neutral busbar



0402174

<https://www.phoenixcontact.com/us/products/0402174>

Classifications

ECLASS

ECLASS-11.0	27141139
ECLASS-12.0	27141139
ECLASS-13.0	27250307

ETIM

ETIM 9.0	EC000485
----------	----------

UNSPSC

UNSPSC 21.0	39121100
-------------	----------

NLS-CU 3/10 SN 1000MM - Neutral busbar



0402174

<https://www.phoenixcontact.com/us/products/0402174>

Environmental product compliance

EU RoHS

Fulfills EU RoHS substance requirements	Yes, No exemptions
---	--------------------

China RoHS

Environment friendly use period (EFUP)	EFUP-E
	No hazardous substances above the limits

EU REACH SVHC

REACH candidate substance (CAS No.)	No substance above 0.1 wt%
-------------------------------------	----------------------------

NLS-CU 3/10 SN 1000MM - Neutral busbar



0402174

<https://www.phoenixcontact.com/us/products/0402174>

Accessories

AB/SS - Support bracket

0404428

<https://www.phoenixcontact.com/us/products/0404428>



Support bracket made from insulation material, with retaining screw, can be used with either 3 x 10 mm or 6 x 6 mm busbar, color: gray

AB/SS-M - Support bracket

3025888

<https://www.phoenixcontact.com/us/products/3025888>



Support bracket made from insulation material, with retaining screw, can be used for 3 x 10 mm busbar, color: gray

NLS-CU 3/10 SN 1000MM - Neutral busbar



0402174

<https://www.phoenixcontact.com/us/products/0402174>

AB-SK 65 - Support bracket

3026489

<https://www.phoenixcontact.com/us/products/3026489>

Support bracket, Bracket for busbars, set every 20 cm, width: 6.2 mm, height: 95.5 mm, number of positions: 1, color: gray, mounting type: DIN rail mounting

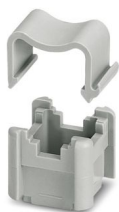


AB/SKS - Support bracket

3240224

<https://www.phoenixcontact.com/us/products/3240224>

Support bracket for busbars



NLS-CU 3/10 SN 1000MM - Neutral busbar



0402174

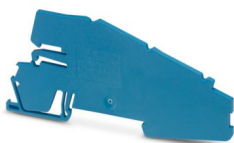
<https://www.phoenixcontact.com/us/products/0402174>

AB-PTI/3 - Support bracket

3213974

<https://www.phoenixcontact.com/us/products/3213974>

Support bracket, Bracket for busbars, set every 20 cm, pitch: 200 mm, depth: 46 mm, width: 2 mm, height: 103 mm, number of positions: 1, color: blue



AB-SK - Support bracket

3025341

<https://www.phoenixcontact.com/us/products/3025341>

Support bracket for busbars



NLS-CU 3/10 SN 1000MM - Neutral busbar



0402174

<https://www.phoenixcontact.com/us/products/0402174>

AB-SK 65-D - Support bracket

3026900

<https://www.phoenixcontact.com/us/products/3026900>

Support bracket, Bracket for busbars, set every 20 cm, width: 8.2 mm, height: 150 mm, number of positions: 2, color: gray, mounting type: DIN rail mounting



AB/SS-EX - Support bracket

0404415

<https://www.phoenixcontact.com/us/products/0404415>

Support bracket, insulating material, with 2 retaining screws, for use with either 3 x 10 mm or 6 x 6 mm busbar, color: gray



NLS-CU 3/10 SN 1000MM - Neutral busbar



0402174

<https://www.phoenixcontact.com/us/products/0402174>

AB-UTN 2,5/10 - Support bracket

3245082

<https://www.phoenixcontact.com/us/products/3245082>

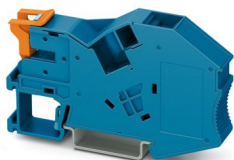


Support bracket, Bracket for busbars, set every 20 cm, depth: 46.9 mm, width: 2.2 mm, height: 58.4 mm, number of positions: 1, color: blue

AB-PTI 16-NLS BU - Support bracket

1030138

<https://www.phoenixcontact.com/us/products/1030138>



Support bracket, depth: 46.8 mm, width: 12.2 mm, height: 81.9 mm, color: blue

NLS-CU 3/10 SN 1000MM - Neutral busbar



0402174

<https://www.phoenixcontact.com/us/products/0402174>

AB-SK TOP - Support bracket

3062090

<https://www.phoenixcontact.com/us/products/3062090>

Support bracket, Bracket for busbars, set every 20 cm, width: 5.2 mm, height: 102.4 mm, number of positions: 1, color: gray, mounting type: DIN rail mounting

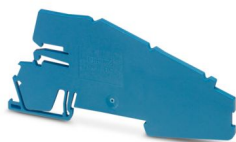


AB-PTI 4/3 - Support bracket

3214053

<https://www.phoenixcontact.com/us/products/3214053>

Support bracket, Bracket for busbars, set every 20 cm, depth: 46 mm, width: 2.2 mm, height: 116 mm, number of positions: 1, color: blue



NLS-CU 3/10 SN 1000MM - Neutral busbar



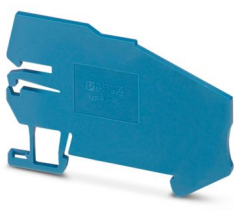
0402174

<https://www.phoenixcontact.com/us/products/0402174>

AB-PTI - Support bracket

3214006

<https://www.phoenixcontact.com/us/products/3214006>



Support bracket, Bracket for busbars, set every 20 cm, pitch: 200 mm, depth: 44.8 mm, width: 2 mm, height: 69.25 mm, number of positions: 1, color: blue

ABN 2/SS - Support bracket

0404460

<https://www.phoenixcontact.com/us/products/0404460>



Double support bracket, insulating material, optionally for use with 3 x 10 mm or 6 x 6 mm busbar, height in closed state: 39 mm

NLS-CU 3/10 SN 1000MM - Neutral busbar



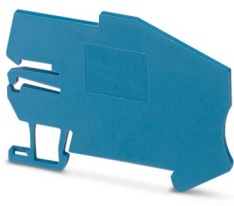
0402174

<https://www.phoenixcontact.com/us/products/0402174>

AB-PTI 6 - Support bracket

3214008

<https://www.phoenixcontact.com/us/products/3214008>



Support bracket, Bracket for busbars, set every 20 cm, pitch: 200 mm, depth: 48.5 mm, width: 2 mm, height: 69.4 mm, number of positions: 1, color: blue

AB2/SS - Support bracket

0404431

<https://www.phoenixcontact.com/us/products/0404431>



Double support bracket, insulating material, optionally for use with 3 mm x 10 mm or 6 mm x 6 mm busbar, height: 48 mm

NLS-CU 3/10 SN 1000MM - Neutral busbar



0402174

<https://www.phoenixcontact.com/us/products/0402174>

AB3/SS - Support bracket

0800086

<https://www.phoenixcontact.com/us/products/0800086>

Support bracket, material: PA, color: gray



AB-SK 65-D INSULATED - Support bracket

3040889

<https://www.phoenixcontact.com/us/products/3040889>

Support bracket, Bracket for busbars, set every 20 cm, width: 8.2 mm, height: 150 mm, number of positions: 2, color: gray, mounting type: DIN rail mounting



NLS-CU 3/10 SN 1000MM - Neutral busbar



0402174

<https://www.phoenixcontact.com/us/products/0402174>

AB-SK/E - Support bracket

3026476

<https://www.phoenixcontact.com/us/products/3026476>

Support bracket, Bracket for busbars, set every 20 cm, depth: 20 mm, width: 56 mm, height: 10 mm, diameter: 4.5 mm, number of positions: 2, color: silver, mounting type: Direct mounting

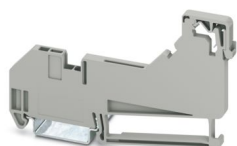


AB-SK TOP INSULATED - Support bracket

3062074

<https://www.phoenixcontact.com/us/products/3062074>

Support bracket, Bracket for busbars, set every 20 cm, width: 5.2 mm, height: 102.4 mm, number of positions: 2, color: gray, mounting type: DIN rail mounting



NLS-CU 3/10 SN 1000MM - Neutral busbar



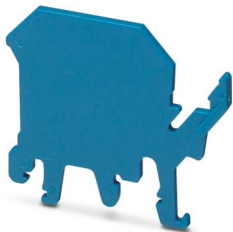
0402174

<https://www.phoenixcontact.com/us/products/0402174>

UAB - Support bracket

3032428

<https://www.phoenixcontact.com/us/products/3032428>

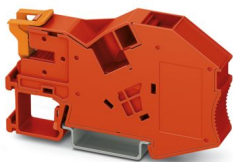


Support bracket, number of positions: 1, color: blue

AB-PTI 16-NLS RD - Support bracket

1030140

<https://www.phoenixcontact.com/us/products/1030140>



Support bracket, depth: 46.8 mm, width: 12.2 mm, height: 81.9 mm, color: red

NLS-CU 3/10 SN 1000MM - Neutral busbar



0402174

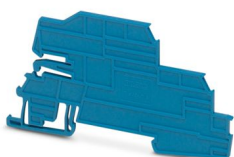
<https://www.phoenixcontact.com/us/products/0402174>

AB-UTI/3 - Support bracket

3076038

<https://www.phoenixcontact.com/us/products/3076038>

Support bracket, Bracket for busbars, set every 20 cm, pitch: 200 mm, depth: 51.2 mm, width: 2.2 mm, height: 93.5 mm, number of positions: 1, color: blue



AB-SK/E-NS 35 - Support bracket

3213111

<https://www.phoenixcontact.com/us/products/3213111>

Support bracket, Bracket for busbars, set every 20 cm, depth: 33.7 mm, width: 56 mm, height: 50 mm, number of positions: 2, color: silver, mounting type: DIN rail mounting



NLS-CU 3/10 SN 1000MM - Neutral busbar



0402174

<https://www.phoenixcontact.com/us/products/0402174>

AB-SKS 60 - Support bracket

3240223

<https://www.phoenixcontact.com/us/products/3240223>

Support bracket for busbars

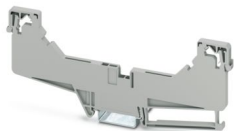


AB-SK-D TOP INSULATED - Support bracket

3062087

<https://www.phoenixcontact.com/us/products/3062087>

Support bracket, Bracket for busbars, set every 20 cm, width: 5.2 mm, height: 155.8 mm, number of positions: 2, color: gray, mounting type: DIN rail mounting



NLS-CU 3/10 SN 1000MM - Neutral busbar



0402174

<https://www.phoenixcontact.com/us/products/0402174>

AB-PTI 16-NLS-FE - Support bracket

1030141

<https://www.phoenixcontact.com/us/products/1030141>

Support bracket, depth: 46.8 mm, width: 12.2 mm, height: 81.9 mm, color: black/yellow



AB-SK-D TOP - Support bracket

3062100

<https://www.phoenixcontact.com/us/products/3062100>

Support bracket, Bracket for busbars, set every 20 cm, width: 5.2 mm, height: 155.8 mm, number of positions: 2, color: gray, mounting type: DIN rail mounting



NLS-CU 3/10 SN 1000MM - Neutral busbar



0402174

<https://www.phoenixcontact.com/us/products/0402174>

AB-PTI 16-NLS - Support bracket

1030137

<https://www.phoenixcontact.com/us/products/1030137>

Support bracket, depth: 46.8 mm, width: 12.2 mm, height: 81.9 mm, color: gray, mounting type: DIN rail mounting



UAB 1 - Support bracket

3032431

<https://www.phoenixcontact.com/us/products/3032431>

Support bracket, number of positions: 1, mounting type: DIN rail mounting, color: gray



NLS-CU 3/10 SN 1000MM - Neutral busbar



0402174

<https://www.phoenixcontact.com/us/products/0402174>

AP-NLS N - Cover profile

1013634

<https://www.phoenixcontact.com/us/products/1013634>



Cover profile, height: 300 mm, color: transparent

Phoenix Contact 2024 © - all rights reserved

<https://www.phoenixcontact.com>

Phoenix Contact USA

586 Fulling Mill Road

Middletown, PA 17057, United States

(+717) 944-1300

info@phoenixcon.com