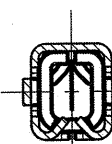
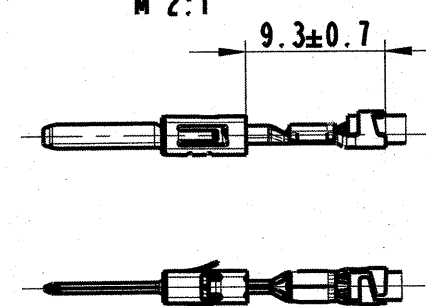


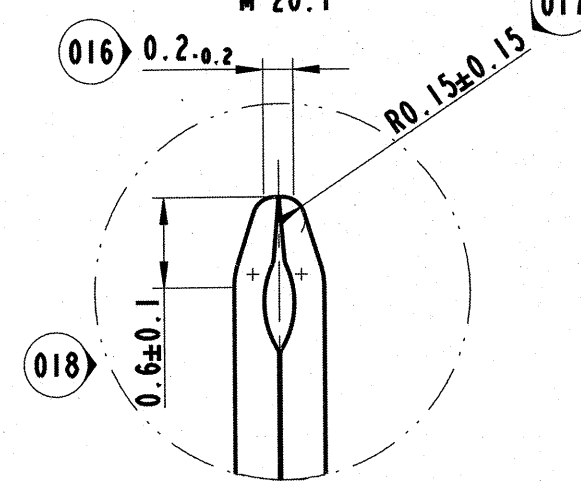
E-E



ANSCHLAGBILD
CRIMPED ON WIRE
M 2:1

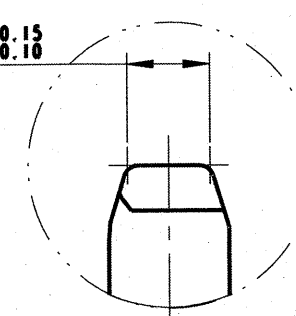


A
M 20:1



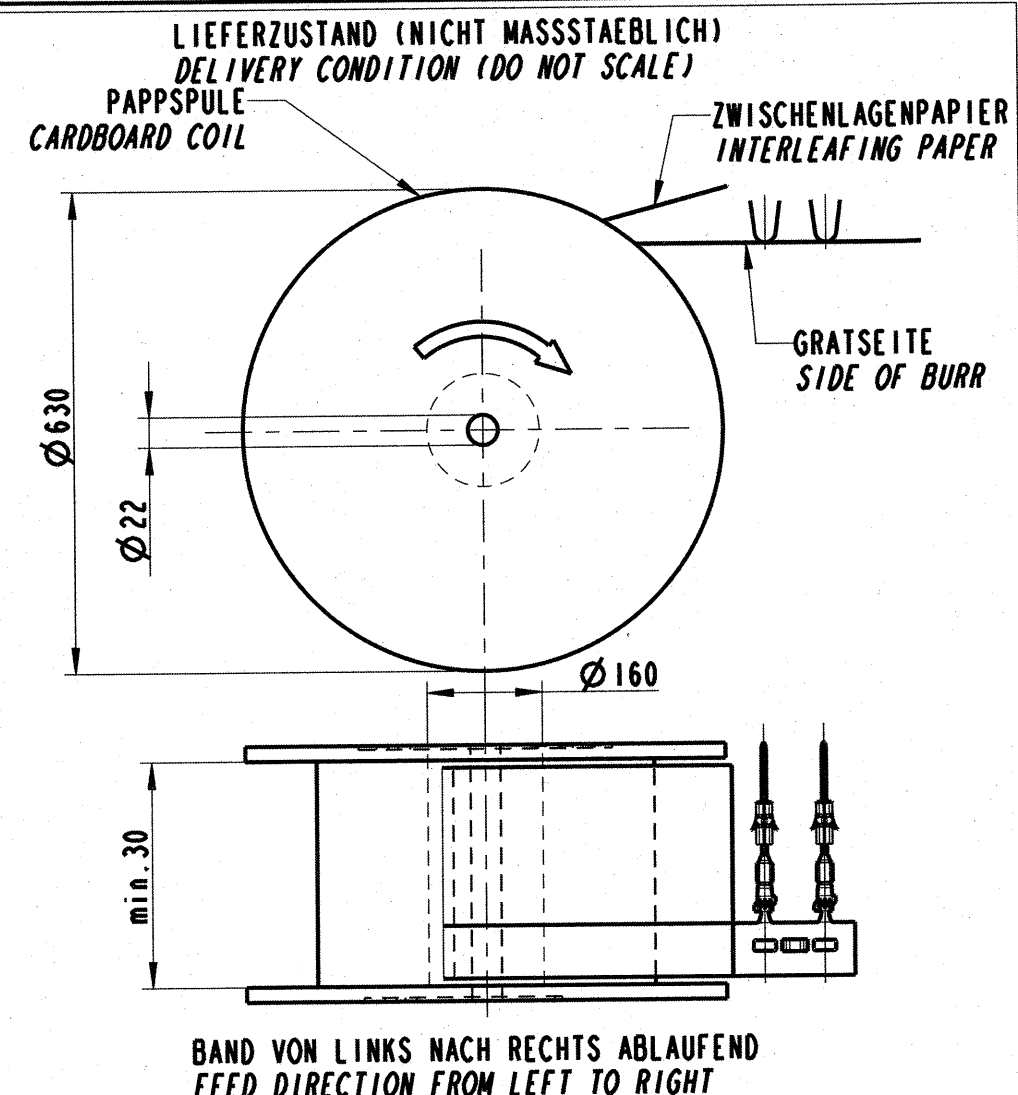
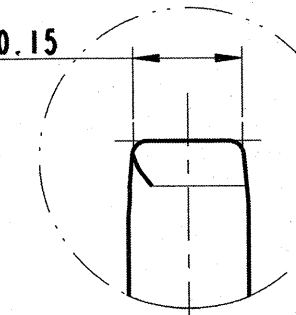
B
M 10:1

036 1.1±0.15



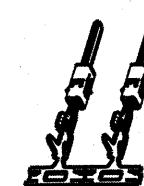
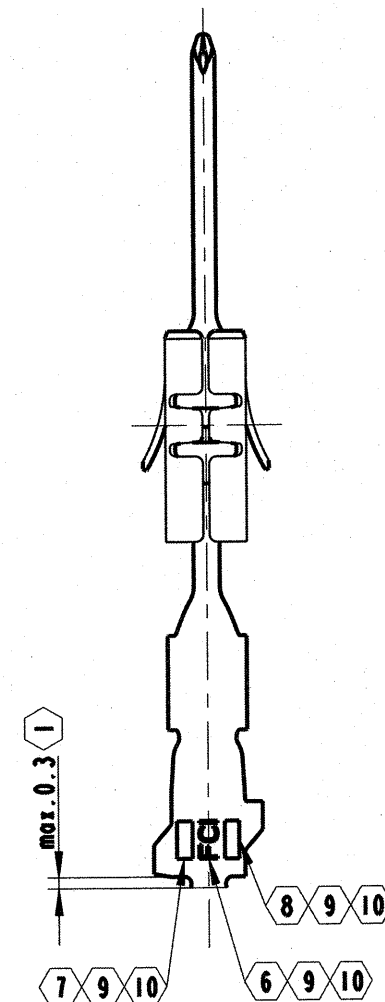
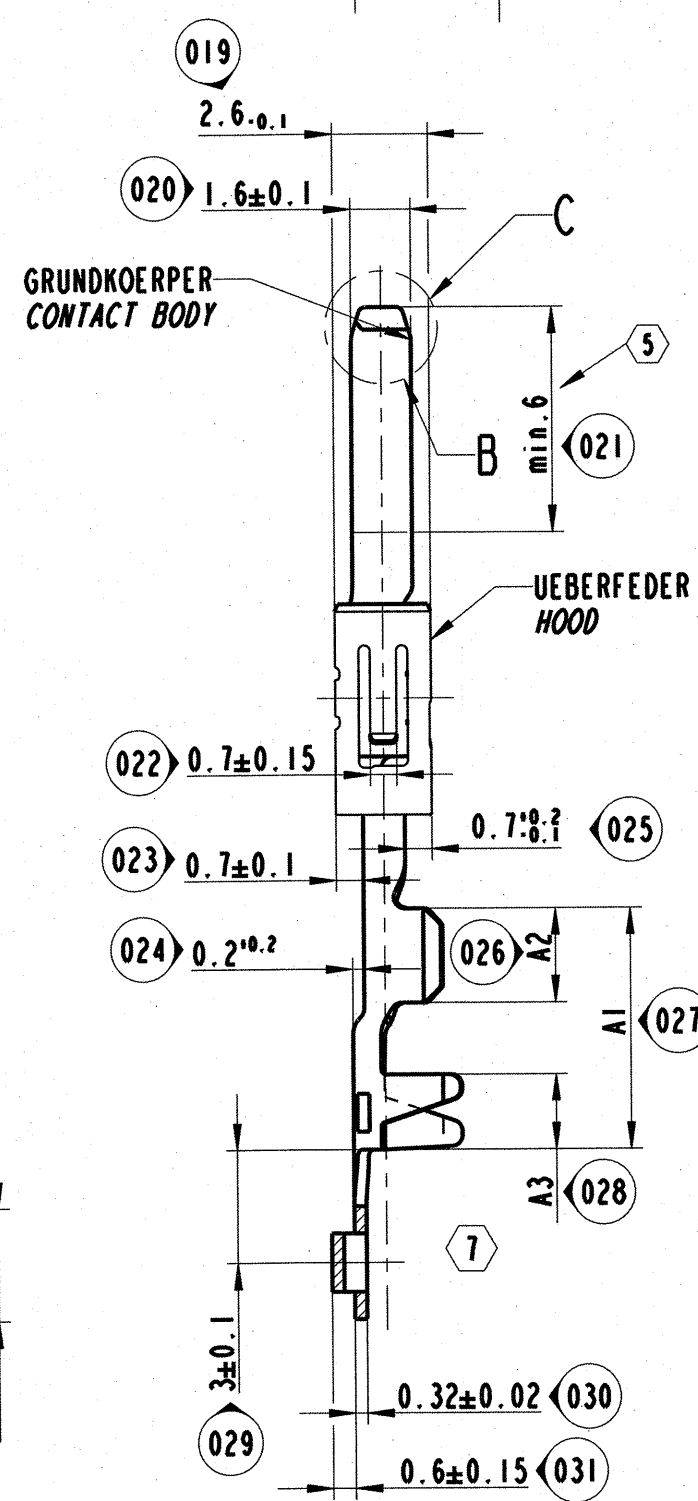
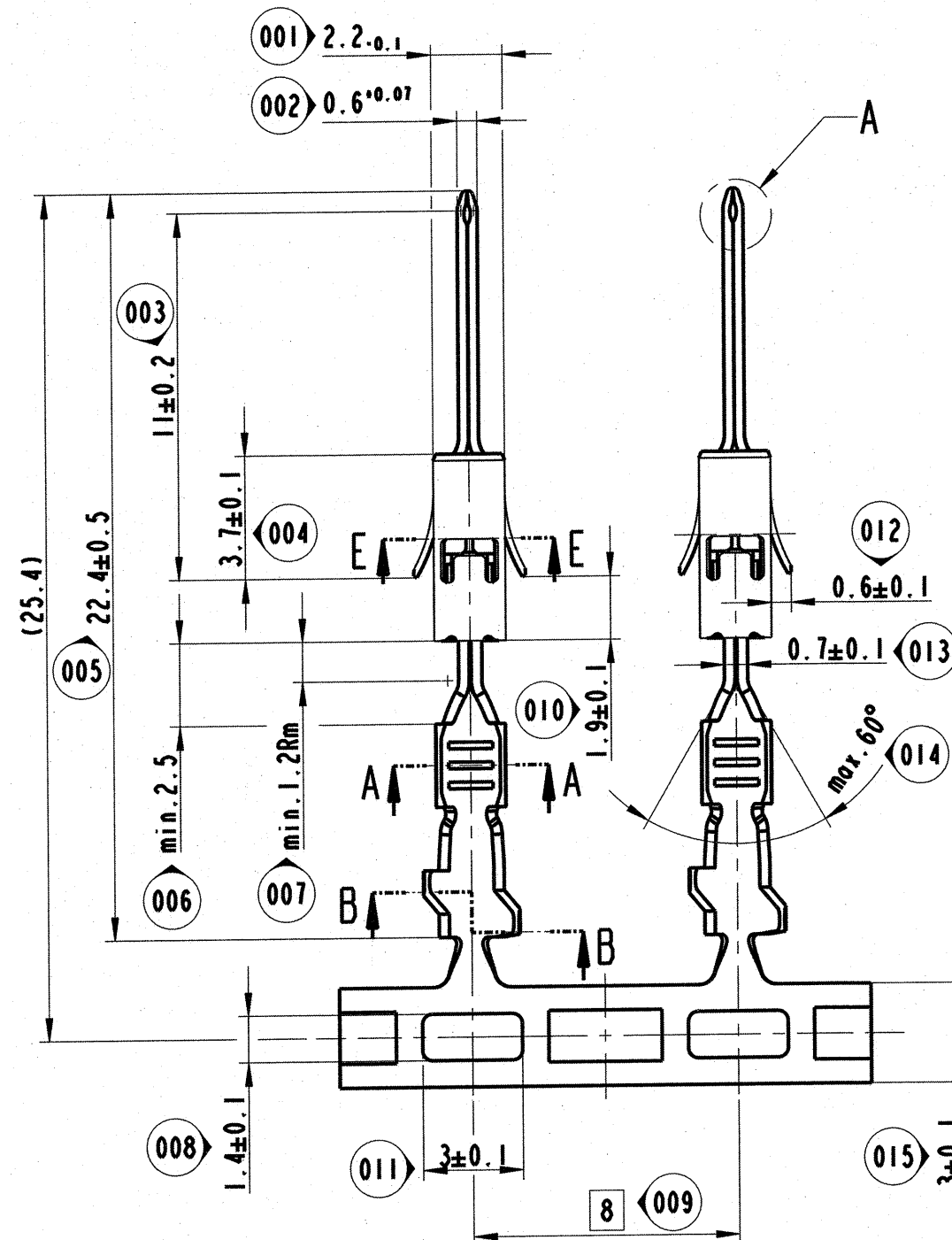
C
M 10:1

037 1.45±0.15



BEMERKUNGEN / NOTES

- MASZ GILT NUR FÜR KABELKONFEKTIONÄRE
DIMENSION ONLY FOR HARNESSMAKER
- DIE VERARBEITUNG DER FLACHSTECKER ERFOLGT NACH MVL-CRIMP-SPEZIFIKATION 9 084 10 00 BLATT 2
THE MALE TERMINALS MUST BE CRIMPED ACCORDING MVL-CRIMP-SPECIFICATION 9 084 10 00 SHEET 2
- CRIMPDIMENSIONIERUNG ERFOLGT FÜR FLRY-LEITUNG NACH DIN 72551-6/1 CRIMP DIMENSIONS WERE DESIGNED FOR FLRY-WIRES ACCORDING TO DIN 72551-6
- VEREDLUNGSBEREICH FÜR GOLDVERSIONEN ALLSEITIG ÜBER EINER UNTERNICKELUNG
PLATING AREA FOR GOLDVERSIONS ALL SIDES OVER UNDERLAYER Ni
- CRIMPBEREICH (1-3)µm MATT Sn(GOLDVERSIONEN)
CRIMP AREA (1-3)µm MATT Sn(GOLDVERSIONEN)
- MVL-FIRMENZEICHEN/ MVL-SUPPLIER CODE
- TEILECODE / PART CODE
- WOCHE UND JAHR DER HERSTELLUNG
WEEK AND YEAR OF PRODUCTION
- GERADE MITTELSCHRIFT/ STRAIGHT MEDIUM LETTER: 0.7
VERTIEFT/DEEPEND: 0.06-0.03
- PRAEGEN VOR DEM SCHNEIDEN/ REALIZE SERRATIONS FOR CUTTING



M 1:1

Rm = Radiusmitte
radius center point
E = Eckenmasz
width across corners

ECN-NO. ECN NUMBER	DATE DATUM	DD / MM / YY REVISION INDEX	POSITION POSITION	CHANGE DESCRIPTION ÄNDERUNG	DRAWN BY GEZ.	CHK. BY GEPR.	APPR. BY GEN.
14-10262	20.10.14	F	AC11	DELPHI P/N ADDED			
655/11	15.09.11	E	F11 E11 F11	Dimension 22.4mm was 22.2mm; Dimension 25.4mm was 25.2mm; Dimension 11.0mm was 10.8mm;			
538/08	16.02.11	D	-/C10 C10 D06 A05 C03/D03 C01	Redrawn in Pro-E; Part revision revised; Crimp code deleted; Part code added; Week and year of production added; Hole added; 3D view added;			
479/06	12.07.06	C04	-	UEBERARBEITUNG			
ECN-NO. DATE DD / MM / YY REVISION POSITION CHANGE DESCRIPTION DRAWN BY CHK. BY APPR. BY ECN NUMBER DATUM INDEX ÄNDERUNG GEZ. GEPR. GEN. PRODUCT SPEC. PACKAGING SPEC. APPLICATION SPEC. COPYRIGHT DELPHI CORPORATION AND/OR ITS AFFILIATES. ALL RIGHTS RESERVED. REVISED PRODUCT SPECIFIK. VERPACKUNGS SPECIFIK. ANWENDUNGS SPECIFIK. THIS DRAWING IS THE PROPERTY OF DELPHI CORPORATION. THE REPRODUCTION, DISTRIBUTION AND UTILIZATION OF THIS DOCUMENT OR ITS RELATED CAD DATA, AS WELL AS COMMUNICATION OF ANY CONTENT TO OTHERS, WITHOUT EXPRESS AUTHORIZATION IS PROHIBITED. INFORMATIONEN DIE REPRODUKTION, VERTEILUNG UND NUTZUNG DIESER DOKUMENTES ODER DEREN ZUGEHÖRIGEN CAD DATEN, ODER AUCH ALS KOMMUNIKATION FÜR ANDEREN UNTERSUCHUNG, IST OHNE BEZUGSÜBERGABUNG DURCH DIE DELPHI CORPORATION UNTERSAGT.							
TOLERANCES TOLERANZEN				MATERIAL: SIEME TABELLE SEE TABLE	SURFACE FINISH OBERFLÄCHE SIEME TABELLE SEE TABLE		
COUNTERPART N. GEGENSTÜCK N.				COLOUR: FARBE	ECO Loc. Code STANDORT CODE GN		
DO NOT SCALE DRAWING ZEICHNUNG NICHT VERMESSEN				TOOL NO. WERKZEUG N.	TITLE BEBEHRUNG		
DRAWN BY GEZ.				DATE DATUM	NAME NAME		
CHECKED BY GEPR.				DATE DATUM	NAME NAME		
APPROVED BY GEN.				DATE DATUM	NAME NAME		
1998				12.03.	S.Mueller		
12.03.				12.03.	S.Mueller		
12.03.				12.03.	G.May		
DRAWING NUMBER ZEICHN. NUMMER				FILE NAME DATEI NAME	6 010 06 11		
14-10262				60100611C.B1.D	SCALE M: 5:1		

6 010 19 44	33504727	0.8µm NiAu	3H	> 1.0 - 1.5	CuSn4 F47	FEDERSTAHL/ STAINLESS STEEL X10CrNi 18 8 NACH/ ACC. DIN EN 10151	6.4	3.0	2.0	3.0	3.7	1.4	2.4	3.1	3.8	C
6 010 19 41	33504755	1-3µm Sn	3T		CuFe2P F42											B
6 010 06 41	10769218	1-3µm Sn	3L													
6 010 19 34	33504726	0.8µm NiAu	2H	0.5 - 1.0	CuSn4 F47		6.4	3.0	2.0	2.5	3.2	1.2	1.8	2.7	3.4	C
6 010 19 31	10863773	1-3µm Sn	2T		CuFe2P F42											B
6 010 14 34	33504725	1.27µm NiAu	2E		CuSn4 F47											
6 010 06 34	10751589	0.8µm NiAu	2V	> 0.2 - 0.35	CuFe2P F42		6.4	2.5	2.0	2.1	2.9	0.8	1.4	2.1	2.9	C
6 010 06 31	10756897	1-3µm Sn	2L		CuFe2P F42											B
6 010 19 14	33504724	0.8µm NiAu	1H		CuSn4 F47											
6 010 19 11	10866290	1-3µm Sn	1T		CuFe2P F42											
6 010 14 14	33504723	1.27µm NiAu	1E		CuSn4 F47											
6 010 06 14	10751586	0.8µm NiAu	1V		CuFe2P F42											
6 010 06 11	10775249	1-3µm Sn	1L		CuFe2P F42											
MVL TEILE-NR. MVL PART-NO.	DELPHI TEILE-NR. DELPHI PART-NO.	OBERFLÄCHE CONTACT FINISH	TEILE CODE PART CODE	KABELQUERSCHN. (mm²) KABEL: FLR WIRE SIZE (mm²)	GRUNDKÖRPER CONTACT BODY	UEBERFEDER CANTILEVER SPRING	A1	A2	A3	B1	B2	D1	D2	(H1)	(H2)	FRONT NACH/ ACC. DETAIL
							±0.2	±0.1	±0.2	±0.3	±0.3	±0.3	±0.3			