



## LA2016 Logic Analyzer

SKU 109990065



**IN STOCK** 4 Available

- 1 +

**ADD TO CART**

Description

Best-sellers

Technical Details

Questions and Answers

View History

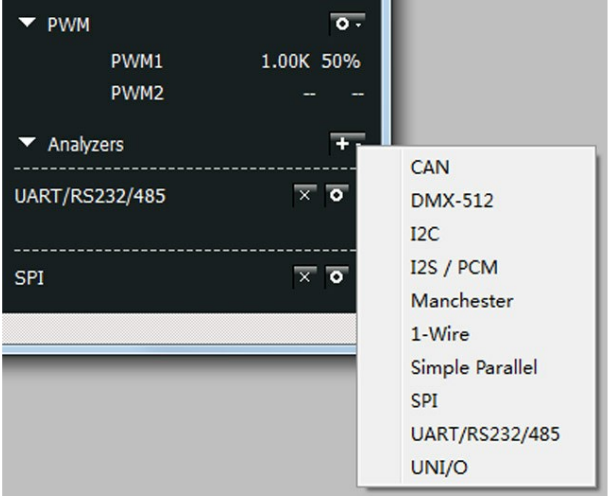
### Description

LA2016 is a high-performance logic analyzer with 16 channels and 200M sampling rate. It is composed of two parts: software on personal computer and hardware equipment. It has the advantages of high sampling rate, large sampling depth, easy to use, etc. LA2016 can sample 16 digital signal at same time. Then the sampled data can be displayed, analyzed, exported and saved on the computer. Software can also decode the data if it conform to the standard protocol of the software supported. Then the decoded data can be displayed, exported and saved.

### Features

- Portable and lightweight
- 200M sampling rate @ full channels
- Large sampling depth and support compression
- The built-in PWM generator
- Compatible USB2.0/3.0 interface
- Powerful software and easy to use
- Support online upgrade automatically





Specification

- Input channels number: 16
- Max sampling rate: 200M
- Measurement bandwidth: 40M
- Min pulse width can be captured: 12.5ns
- Hardware memory size: 1Gbits
- Hardware sampling depth: 50M/channel
- Max compressed depth: 10G/channel
- Input voltage range: -50V ~ +50V
- Input impedance: 220KΩ, 12pF
- Threshold voltage: low level < 0.8V, high level > 1.6V
- PWM channels number: 2
- PWM frequency range: 0.1 ~ 20MHz
- PWM frequency adjust step: 10ns
- PWM pulse width adjust step: 5ns
- PWM output voltage: +3.3V
- PWM output impedance: 50Ω
- Standby current: 150mA
- Max operating current: 300mA
- Dimensions: 95mm \* 55mm \* 23mm
- Support OS: Windows XP, Vista, Windows 7/8(32bit/64bit)
- Support standard protocols: UART(RS-232/485/422), I2C, SPI, CAN, DMX512, HDMI CEC, I2S/PCM, JTAG, LIN, Manchester, Modbus, 1-Wire, Simple Parallel, PS/2 Keyboard/Mouse, UNI/O, USB1.1

DOCUMENTS

[Software and user guide](#)  
[Custom protocols SDK](#)  
For any technical support or suggestion, please kindly go to our [forum](#).

Best-sellers



Technical Details

Dimensions	255mm x 195mm x 55mm
Weight	G.W 404g
Battery	Exclude

Questions and Answers

1

Are the logic analyzer brand new ? And the software with the sdk , are there going to be update (especially protocol) ? Regards.

Nelson128 on Oct 19,2016

Reply |  
upvote (1)

Yes, it's new.And the software will notify you automatically if any updates available.

Michael Han on Oct 20,2016 10:50 AM

Reply |  
upvote (1)

## View History



Mini vibration motor



RF Explorer - 868M



RF Explorer - 433M



RFEMWSUB1G Module

## POPULAR SEARCHES

PCB Manufacturing PCB Stencil Arduino XBee Arduino Shield Beaglebone Black Raspberry Pi Raspberry Pi Touchscreen Linkit Cubieboard Beaglebone Cape  
FPGA Linkit ONE Crazyflie 2.0 Raspberry Pi 3 Model B RF Explorer DSO Nano v3 MediaTek X20 HiKey Board rplidar raspberry pi relay RPLIDAR A2



SHIPPING INFORMATION



KNOWLEDGE BASE



HELP CENTER

### Seeed Info

Reach Us  
Distributors  
Designers  
Careers  
Site Map

### Customer Service

Contact Us  
Customer Support  
Technical Support

### Terms and Conditions

Order Information  
Shipping Information  
Payment Information  
Warranty and Return  
Terms of use  
Privacy Policy

### Stay Tuned

Subscribe to get the latest product releases, activities and tutorials from Seeed Studio.

email address

