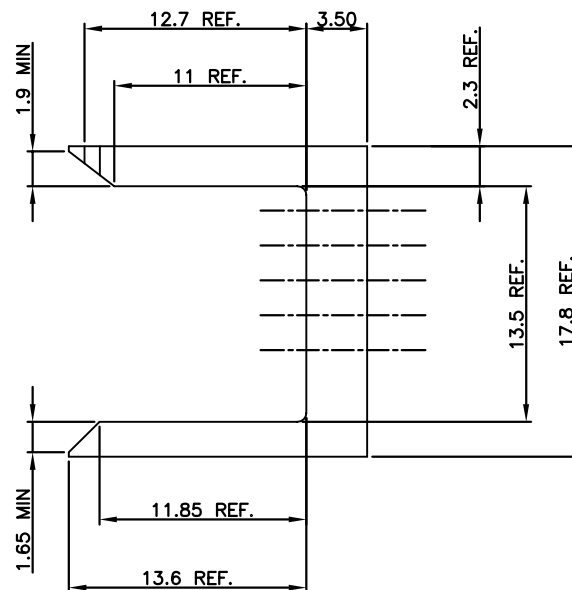
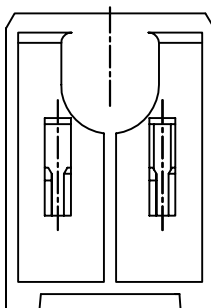
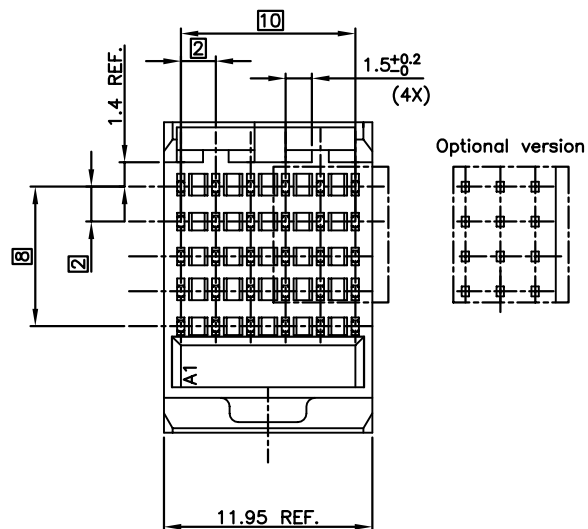


PART NUMBER	NO. OF MOD.
10027633-001	1
10027633-001LF	1

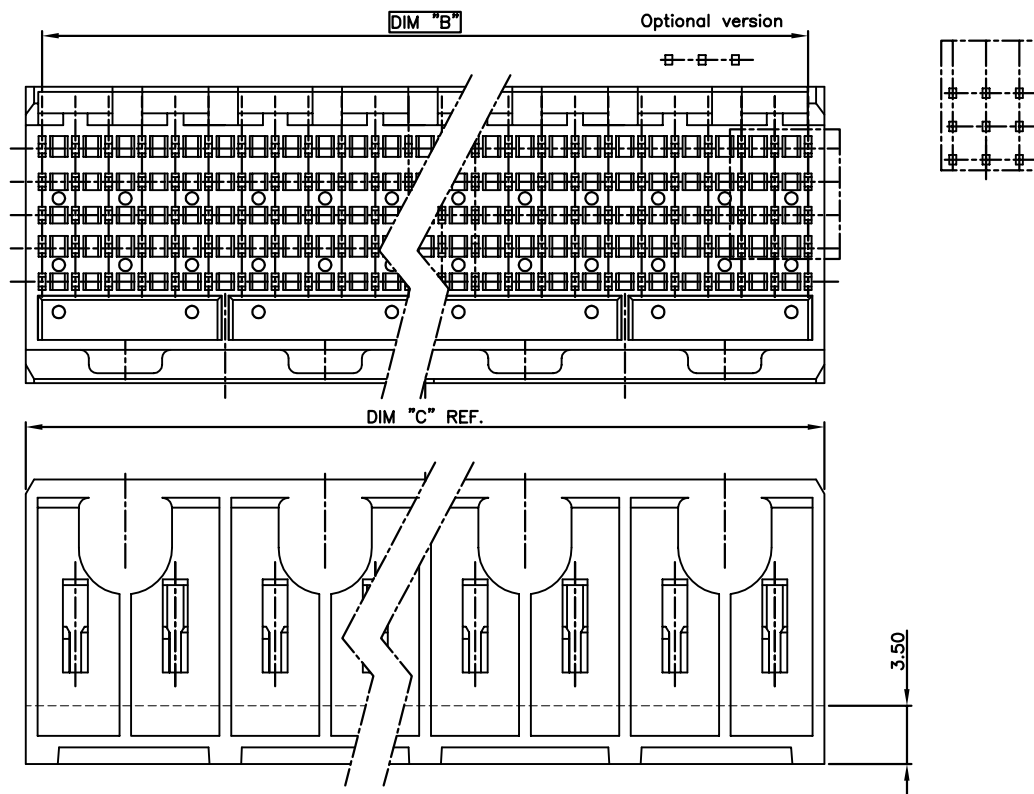


NOTES:

- BODY MATERIAL: LIQUID CRYSTAL POLYMER 30% GLASS. FLAME RETARDANT ACC. TO UL 94-V0. COLOUR : NATURAL.
- FOR LEAD FREE NUMBERS, ADD AN 'LF' SUFFIX. PART NUMBERS THAT DO NOT END IN 'LF' ARE LEAD FREE. EXAMPLE: 10027633-001LF
- THE PRODUCTS WHERE THE PART NUMBER ENDS IN LF AND THE NONE LF PART NUMBERS MEET THE EUROPEAN UNION DIRECTIVES AND OTHER COUNTRY REGULATIONS AS DESCRIBED IN GS-22-008.
- ALL PRODUCTS WILL WITHSTAND EXPOSURE TO 260°C FOR 60 SECONDS IN A CONVECTION, INFRA-RED OR VAPOUR PHASE REFLOW OVEN.

mat'l. code SEE NOTE 1				surface ASME Y14.5	tolerance ASME Y14.5	projection MM	product family METRAL (tm)	
ltr	ecn no	dr	date	tolerances unless otherwise specified			title	
A	V03-0456	LP	03/21/03	angles	.X±.3	MM	5 ROW SHROUD	
B	V06-0080	JRV	3/15/06	linear	.XX±.13	scale 1:1	dwg no	
C	V06-0609	DCH	2006-06-22	0°±2°	.XXX±.051	FCI	sheet 1 of 2	
				dr	L.POTTEIGER 03/21/03		10027633	
				enr	M.GRAY 03/21/03		A4	
				chr	M.GRAY 03/21/03		type	
				app	M.GRAY 03/21/03		CUSTOMER Drawing	
sheet index	revision sheet	C	C					
		1	2					

PART NUMBER	NO. OF MOD.	DIM B	DIM C
10027633-002	2	22	23.95
10027633-003	4	46	47.95
10027633-004	8	94	95.95
10027633-002LF	2	22	23.95
10027633-003LF	4	46	47.95
10027633-004LF	8	94	95.95

**NOTES :**

1. FOR ALL OTHER PRODUCT INFORMATION SEE SHEET 1.

mat'l. code	SEE NOTE 1	surface	ASME Y14.5	tolerance	ASME Y14.5	projection	product family
ltr	ecr no	dr	date	tolerances unless otherwise specified			METRAL (tm)
c				angles	.X±.3	MM	5 ROW SHROUD
				0°±2'	.XX±.13	scale 1:1	
				dr	L.POTTEIGER 03/21/03		dwg no
				enr	M.GRAY 03/21/03		sheet 2 of
				chr	M.GRAY 03/21/03		10027633
				app	M.GRAY 03/21/03		size
sheet	revision						A4
index	sheet						type
							CUSTOMER Drawing