

Data Sheet

LL01CR-CAXxxLxx

CREE 
 ▶ LED Solution Provider



Features & Typical Applications

- Wall washer Lighting
- Available with 3 beam angle
- Optimized Uniformity
- Lens without Holder

Table of Contents

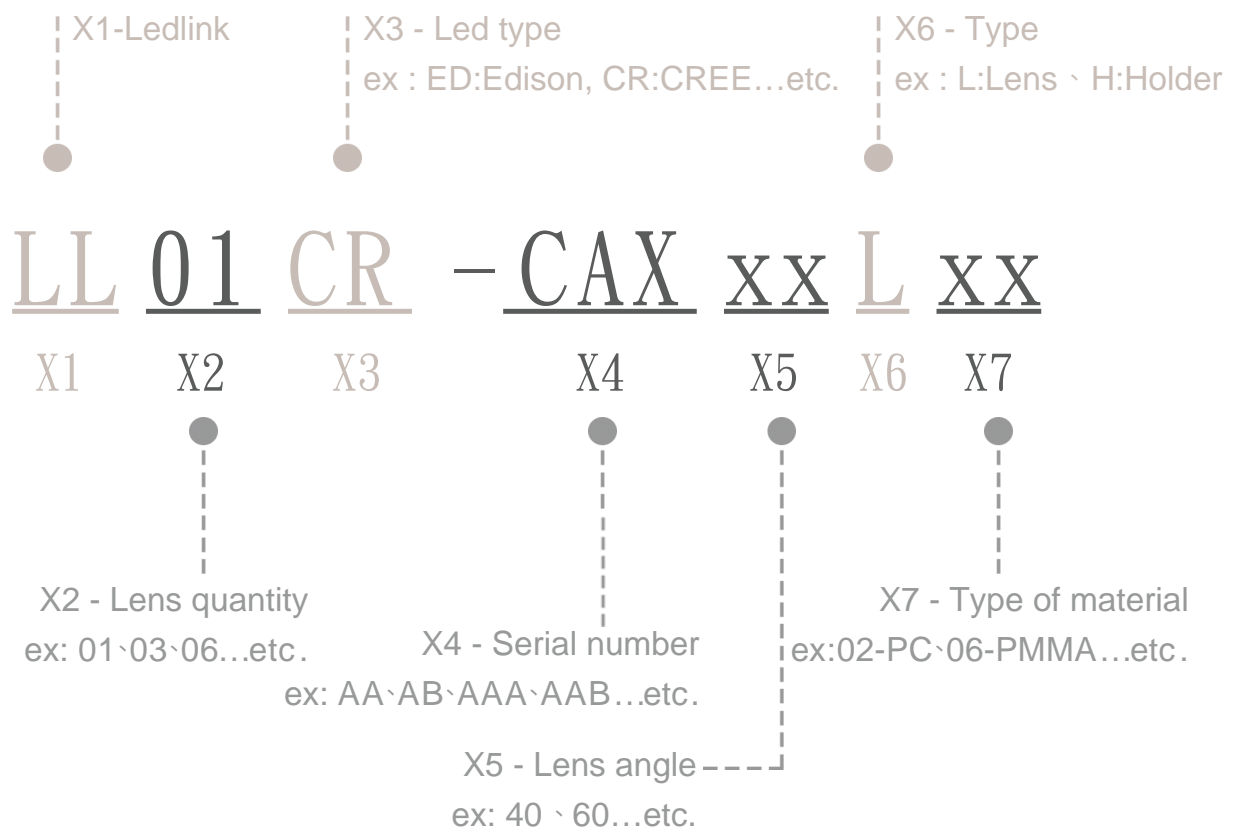
General Information & Product Nomenclature.....	P.2
Optical Specifications	P.3
Mechanical Specifications	P.4
Package Specifications	P.5

LL01CR-CAXxxLxx

General Information

- Lens Material(L06): PMMA 8N
- Lens Material(L02): PC LEV1700
- Operating Temperature range $-40^{\circ}\text{C} \sim +70^{\circ}\text{C}$ (upper limit $+80^{\circ}\text{C}$).
- Storage Temperature range $-40^{\circ}\text{C} \sim +70^{\circ}\text{C}$ (upper limit $+80^{\circ}\text{C}$).
- * Average transmittance in visible spectrum $400\text{nm} \sim 700\text{nm} > 90\%$.
(For raw material only)
- Usage and Maintenance:
 1. If necessary, clean lenses with mild soap, water and soft cloth.
 2. Never use any commercial cleaning solvents on lenses, like alcohol.
 3. Please handle or install lenses with wearing gloves, skin oils may damage lens or its optical characteristic.

Product Nomenclature

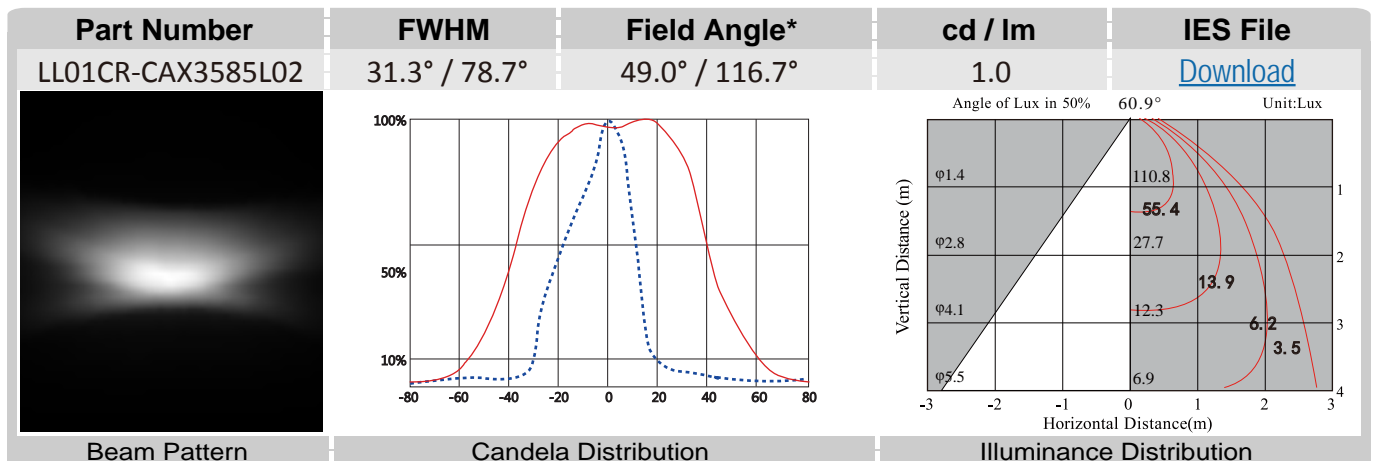
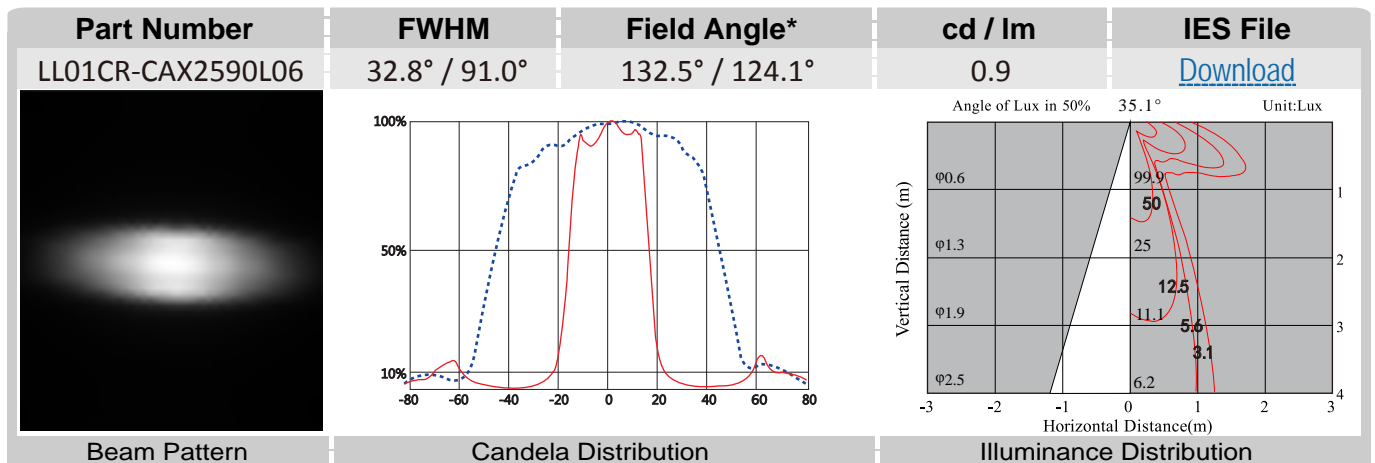
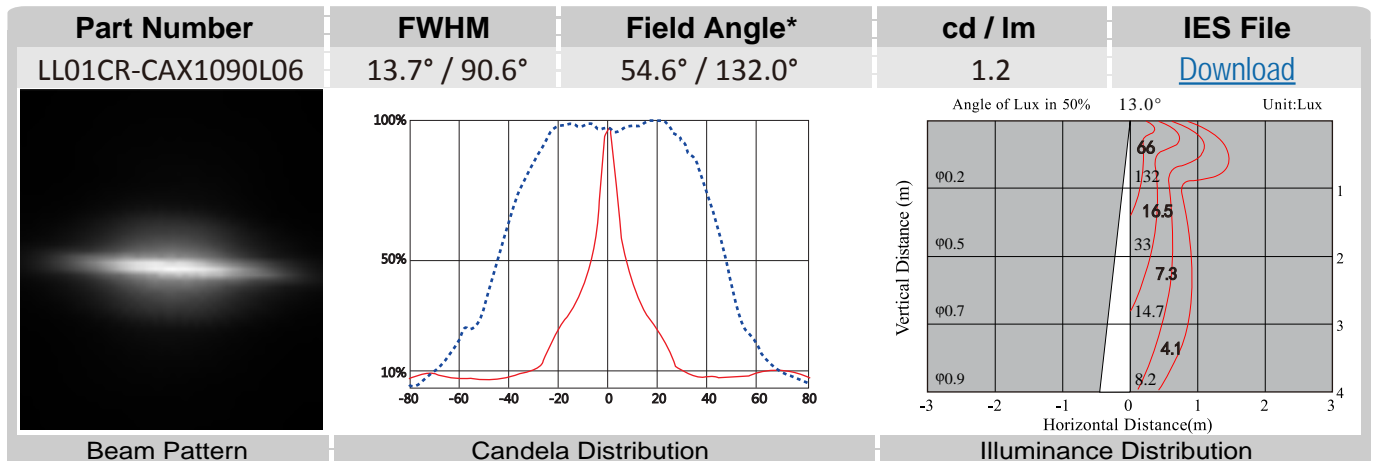


LL01CR-CAXxxLxx Optical Specifications

CREE 
 LED Solution Provider



Note: (1) All the results of analysis are based on 0 degrees of elevation.
 (2) Tolerance: $\pm 10\%$.
 (3) Led Luminous Flux(lm): 149($\pm 5\%$).



*The Field Angle is the angle between the two directions opposed to each other over the beam axis for which the luminous intensity is 10% that of the maximum luminous intensity.
 *This testing result is obtained through testing the popular rank LED samples which provided by the original manufacturer. Hence, the testing results would be varied as the users choose same LED model but different rank.

LL01CR-CAXxxLxx Mechanical Specification

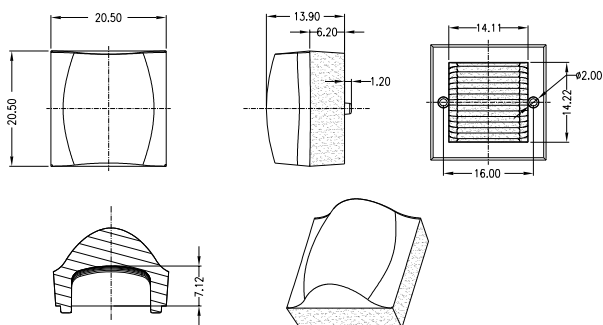
1. Fixing method

Note: (1) All dimensions are in mm.

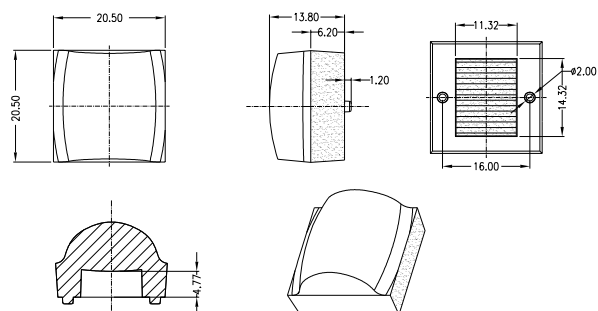
☒ Glue
 ☐ Screw
 ☐ Tape
 ☐ Fixing-ring
 ☒ Frame

2. Lens dimension

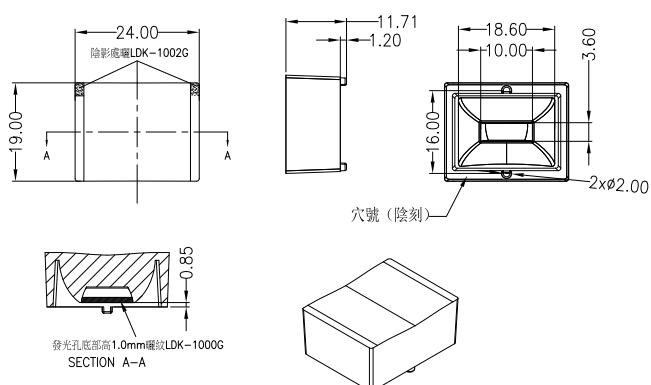
LL01CR-CAX1090L06:



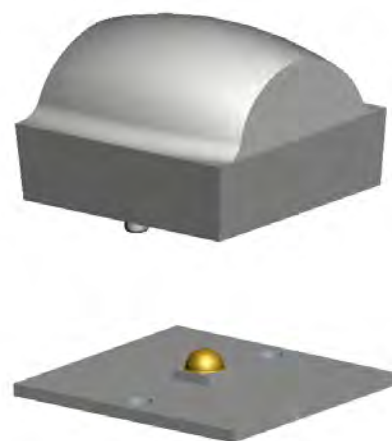
LL01CR-CAX2590L06:



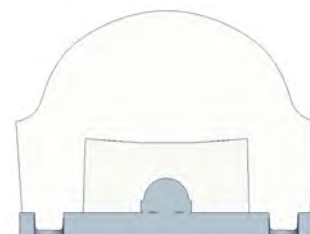
LL01CR-CAX3585L02:



3. Lens + Leds assembly instruction



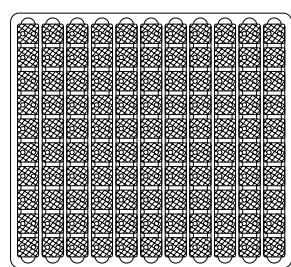
4. View assembly lens with LED:



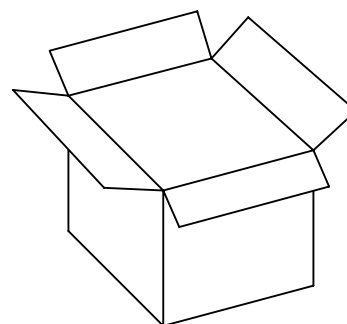
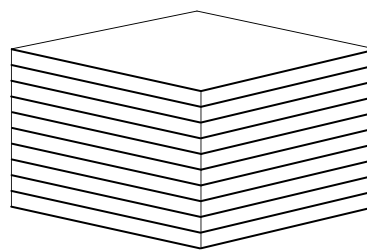
LL01CR-CAXxxLxx

Package Specifications

Item	Quantity	Total	Size(L*W*H)	G.W
plastic box	110 pcs/plastic box	110 pcs	32*29*2 cm	4.3g
outer box	10 plastic box/outer box	1100 pcs	35*31*21 cm	



110 pcs/plastic box



1100 pcs/outer box



Note: