



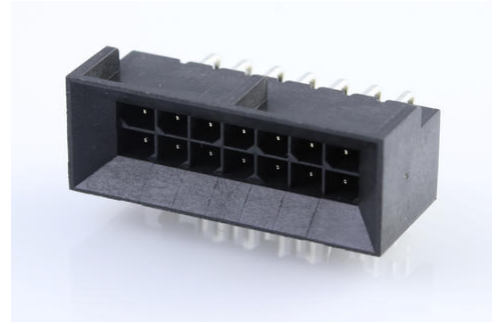
**Part Number :** [444281401](#)

**Product Description :** Micro-Fit BMI Header, Surface Mount Compatible, Dual Row, Right-Angle, with Snap-in Plastic Peg PCB Lock, 14 Circuits, Tin (Sn) Plating

**Series Number :** 44428

**Status :** Active

**Product Category :** PCB Headers and Receptacles



---

## Documents and Resources

### Drawings

[444281401 sd.pdf](#)

[PK-44428-001-001.pdf](#)

### 3D Models and Design Files

[STEP AP242](#)

[SOLIDWORKS](#)

[Creo](#)

[Symbol and Footprint \(Multi-Format\)](#)

[SYM-44428-1401 3-001.zip](#)

### Specifications

[PS-44300-001-001.pdf](#)


[443000002-TS-000.pdf](#)

[444280001-TS-000.pdf](#)

---

## Product Environment Compliance

### Compliance

GADSL/IMDS	Not Relevant
China RoHS	 per SJ/T 11365-2006
EU ELV	Not Relevant
Low-Halogen Status	Not Low-Halogen per IEC 61249-2-21
REACH SVHC	Not Contained per D(2025)4165-DC (25 June 2025)

EU RoHS	Compliant per EU 2015/863
---------	---------------------------

### Compliance Statements

- EU RoHS
- REACH SVHC
- Low-Halogen

### Industry Documents

- IPC 1752A Class C
- IPC 1752A Class D
- Molex Product Compliance Declaration
- IEC-62474
- chemSHERPA (xml)

### Substances of Interest

- PFAS

### EU RoHS Certificate of Compliance

### Additional Product Compliance Information

## Part Details

### General

Status	Active
Category	PCB Headers and Receptacles
Series	44428
Description	Micro-Fit BMI Header, Surface Mount Compatible, Dual Row, Right-Angle, with Snap-in Plastic Peg PCB Lock, 14 Circuits, Tin (Sn) Plating
Application	Board-to-Board, Power, Wire-to-Board
Comments	High Temperature, Square Pin, Solder Type, Polarized to Mating Part
Component Type	PCB Header
Product Name	Micro-Fit BMI
UPC	800756081687

### Agency

CSA	LR19980
-----	---------

UL	E29179
----	--------

## Electrical

Current - Maximum per Contact	8.5A
Voltage - Maximum	600V

## Physical

Breakaway	No
Circuits (Loaded)	14
Circuits (maximum)	14
Color - Resin	Black
Durability (mating cycles max)	30
First Mate / Last Break	No
Glow-Wire Capable	No
Guide to Mating Part	No
Keying to Mating Part	None
Lock to Mating Part	Yes
Material - Metal	Brass
Material - Plating Mating	Tin
Material - Plating Termination	Tin
Material - Resin	Nylon
Net Weight	3.068/g
Number of Rows	2
Orientation	Right Angle
Packaging Type	Tray
PCB Locator	Yes
PCB Retention	Yes
PCB Thickness - Recommended	1.60mm
PC Tail Length	3.50mm
Pitch - Mating Interface	3.00mm
Plating min - Mating	5.080µm
Plating min - Termination	5.080µm
Polarized to PCB	Yes
Shrouded	Fully
Stackable	No

Temperature Range - Operating	-40° to +105°C
Termination Interface Style	Through Hole

### Solder Process Data

Max-Duration	5
Lead-Free Process Capability	WAVE
Max-Cycle	1
Max-Temp	260

---

### Mates With / Use With

#### Mates with Part(s)

Description	Part Number
Micro-Fit BMI Dual Row Receptacle Housings	<u>44133</u>
Micro-Fit BMI Right-Angle Dual Row PCB Receptacles	<u>44764</u>
Micro-Fit BMI Vertical Dual Row PCB Receptacles	<u>44769</u>

---

This document was generated on Dec 29, 2025