

EXTENDED RANGE

- TOOLING FEASIBILITY CONFIRMED
- SAMPLES ON DEMAND
- AVAILABILITY ON DEMAND

PRODUCT NUMBER  
87690-YXXRLF

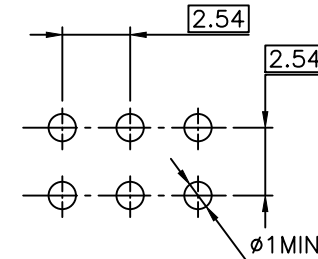
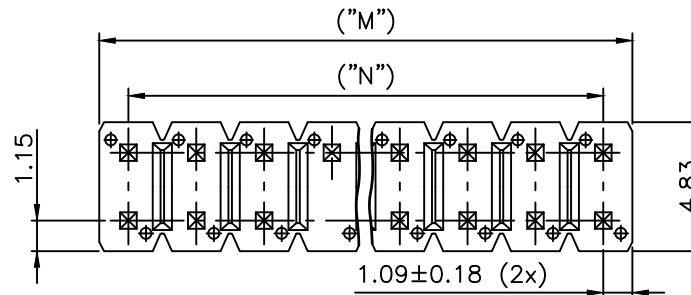
- RoHS COMPATIBLE, SEE NOTE 6
- OPTION, SEE NOTE 4  
(MAY BE SUBJECT TO TOOLING FEES)
- PIN STYLE, SEE SHEET 2  
(AS AVAILABLE)

PLATING:  
(AS AVAILABLE)

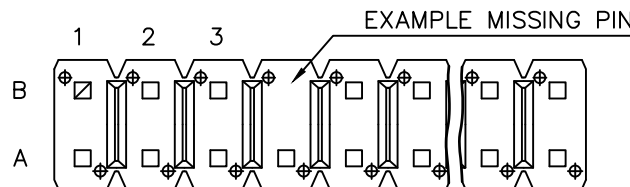
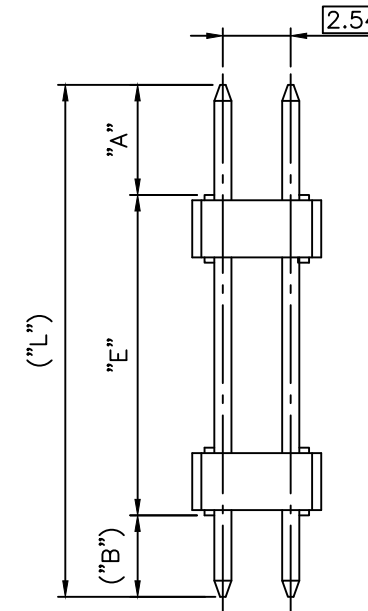
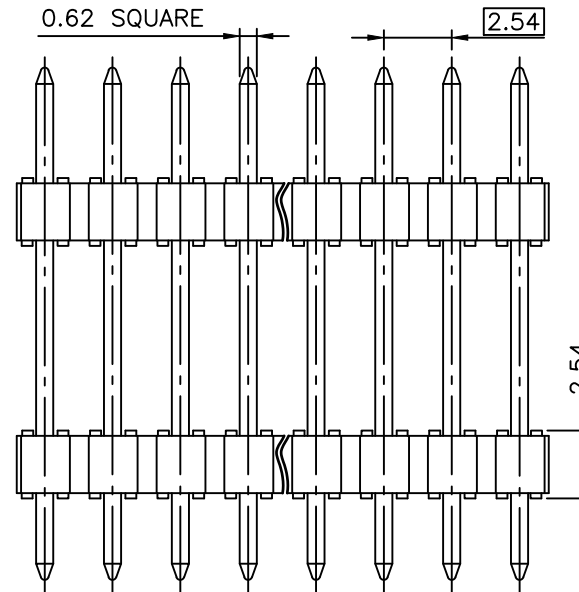
- 1 = 0.76µm FULL GOLD/GXT, OVER 1.27µm Ni MIN
- 3 = 2µm MATTE TIN, OVER 1.27µm Ni MIN
- 7 = FULL GOLD FLASH, OVER 1.27µm Ni MIN
- 8 = 0.38µm FULL GOLD/GXT, OVER 1.27µm Ni MIN
- G = 0.76µm GOLD/GXT IN ZONE "A", 2µm MATTE TIN IN ZONE "B"
- ALL OVER 1.27µm Ni MIN

NOTES:

- 1 - HOUSING MATERIAL: HIGH TEMPERATURE THERMOPLASTIC. UL94V-0 COLOR: BLACK.
- 2 - PIN MATERIAL: PHOSPHOR BRONZE.
- 3 - 12N MIN RETENTION IN EITHER DIRECTION.
- 4 - R = FOR RETENTION FEATURE DETAILS, SEE SHEET 3.  
OMIT IF FEATURE NOT APPLICABLE  
V = BLIBOX PACKAGING FOR CUSTOMER DEDICATED PARTS
- 5 - STANDARD PACKAGING IN POLYBAGS.
- 6 - RoHS COMPATIBLE PRODUCT SPECIFICATIONS
  - a - PLATING:
    - "LF" MEANS THE PRODUCT IS LEAD-FREE, 2µm MINIMUM MATTE TIN OVER 1.27µm MINIMUM NICKEL UNDERPLATE.
  - b - MANUFACTURING PROCESS COMPATIBILITY
    - THE HOUSING WILL WITHSTAND EXPOSURE TO 260°C ±5°C SOLDER BATH TEMPERATURE FOR 5 SECONDS IN A WAVE SOLDER APPLICATION WITH A 1.6mm MIN THICK CIRCUIT BOARD.
  - c - LABELING:
    - MEETS PACKAGING SPECS AS PER GS-14-920
  - d - LEGAL STATEMENT: SEE GS-47-0004
- 7 - FOR 87690-125LF: 0.76µm GXT IN ZONE "A" 2µm MIN MATTE TIN IN ZONE "B"
- 8 - THIS PART SERIES IS NOT INITIALLY INTENDED FOR AUTOMOTIVE APPLICATIONS. ADDITIONAL FEES ARE CHARGEABLE FOR ANY ADDITIONAL QUALIFICATION AND TEST REPORTS PERFORMED OUTSIDE THE SCOPE OF THE STANDARD PRODUCT SPECIFICATIONS.
- 9 - UNLESS OTHERWISE APPROVED BY AMPHENOL, ALL PARTS AND COMPONENTS ARE DESIGNED & BUILT ACCORDING TO AMPHENOL'S SPECIFICATIONS WHICH ARE SUBJECT TO CHANGE WITHOUT NOTICE.



0.62 SQUARE



BOTTOM VIEW

mat'l. code				surface	tolerance	projection	product family
SEE NOTES				ISO 1302	ISO 406 ISO 1101		BERGSTIK
ltr	ecn no	dr	date	tolerances unless otherwise specified		mm	title
AD	F-55239	DDE	25.04.02	angles	linear		
					.X ±0.3		
					.XX ±0.15		
X	B-21151	AMA	15.06.15		.XXX ±0.05	scale 5:1	
Y	F-22417	JJU	15.11.05	dr	O.MATHEVON	96.06.07	
AA	F23090	JCO	16.01.20	engr	J.COMPAGNON	96.06.07	
AB	F-31897	LMU	18.11.19	chr	J.COMPAGNON	96.06.07	
AC	F-35412	LMU	19.11.18	appd	J.COMPAGNON	96.06.07	
sheet	revision	AD	AA	H			
index	sheet	1	2	3			

dwg no	sheet 1 of 3	size
87690		A3
type	CUSTOMER	Drawing

A

B

C

D

A

B

C

D

PRODUCT NUMBER	PRODUCT DIMENSIONS							VIEW OF MISSING PINS POSITION FROM BOTTOM VIEW							
	NBR POS	"A" ±0.2	"E" ±0.25	"B" ±0.25	("L") REF	("M") REF	("N") REF	1	5	10	15	20	25	30	35
87690-X07	2x10	11.96	18.5	3.2	33.66	25.42	22.86								
87690-X10	2x10	11.96	18.5	3.2	33.66	25.4	22.86								
87690-X15	2x07	11.96	18.5	3.2	33.66	17.78	15.24								
87690-X18	2x09	4.95	6.00	4.95	15.90	22.86	20.82								
87690-X19	2x09	8.60	6.00	8.60	23.20	22.86	20.82								
87690-X20	2x10	6.00	14.70	3.30	24.00	25.4	22.86								
87690-X21	2x19	6.00	14.70	3.30	24.00	48.26	45.72								
87690-X22	2x13	10.50	7.75	10.50	28.80	33.02	30.48								
87690-X23	2x14	8.60	6.00	8.60	23.20	35.56	33.02								
87690-X24	2x14	8.95	6.00	8.95	23.9	35.56	33.02								
87690-X25	2x11	3.02	5.08	2.80	12.90	27.94	25.40								
87690-X26	2x05	6.50	52.00	6.50	65.00	12.70	10.16								
87690-X27	2x06	7.15	46.55	7.15	60.85	15.24	12.70								
87690-X28	2x15	7.91	10.00	3.05	20.96	38.10	35.56								
87690-X29	2x10	5.00	20.00	2.50	27.5	25.4	22.86								
87690-X30	2x04	3.09	18.00	2.41	23.50	10.16	7.62								

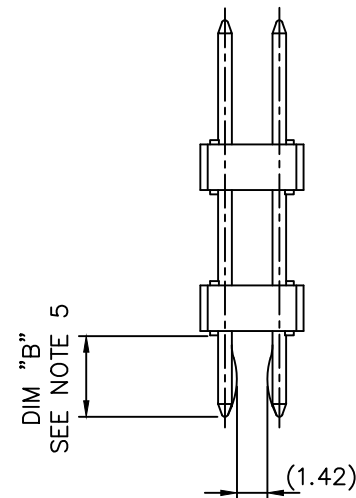
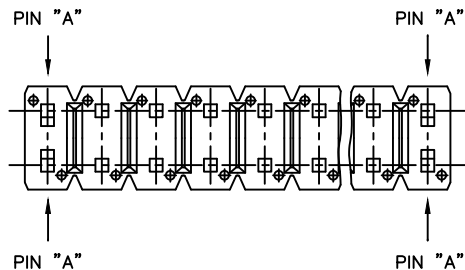
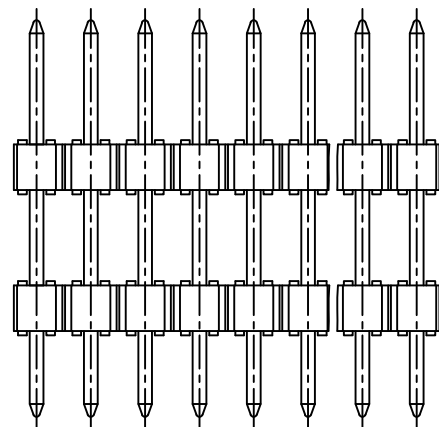
mat'l. code				surface ISO 1302 <input checked="" type="checkbox"/>		tolerance ISO 406 ISO 1101		projection 		product family BERGSTIK					
ltr ecn no dr date				tolerances unless otherwise specified						title					
V	F-22417	JJU	15.11.05	angles linear						mm scale N/A			HEADER STR,DR DOUBLE BODY POL		
W	F-23090	JCO	16.01.20												
X	F-31897	LMU	18.11.19	dr O.MATHEVON 96.06.07 engr J.COMPAGNON 96.06.07 chr J.COMPAGNON 96.06.07						dwg no sheet 2 of - size					
Y	F-35412	LMU	19.11.18												
AA	F-55239	DDE	25.04.02	appd J.COMPAGNON 96.06.07						87690 A3					
U	B-21151	AMA	15.06.15	sheet revision index sheet						type CUSTOMER Drawing					

A

B

C

D



## NOTES:

- 1 - PART NUMBER 87690-YXXRLF
- 2 - PINS "A" USED FOR RETENTION.
- 3 - DIRECTION OF RETENTION SHOWN BY ARROWS.
- 4 - KINKED LEGS LOCATION CAN BE MOVED IF A PIN IS MISSING.
- 5 - RETENTION VERSION ONLY AVAILABLE WHEN DIM "B" IS BETWEEN 2.9 mm AND 3.5 mm.
- 6 - 2 AND 3 POSN KINKED HEADER ARE NOT AVAILABLE.

"R" INDICATES A RETENTION HEADER.

mat'l. code				surface	tolerance	projection	product family			
				ISO 1302	ISO 406 ISO 1101		BERGSTIK			
ltr	ecn no	dr	date	tolerances unless otherwise specified			title			
H	F-55239	DDE	25.04.02	angles	linear	mm	HEADER STR,DR			
C	F70179	JMC	97.03.28			scale N/A	DOUBLE BODY POL			
D	F70815	OMA	97.12.23	dr	O.MATHEVON	96.06.07	dwg no			
E	F80321	JMC	98.05.04	enr	J.COMPAGNON	96.06.07	sheet 3 of -			
F	F05-0291	JCO	05.11.14	chr	J.COMPAGNON	96.06.07	87690			
G	F06-0196	LMU	06.06.20	appd	J.COMPAGNON	96.06.07	type CUSTOMER Drawing			
sheet	revision									
index	sheet									