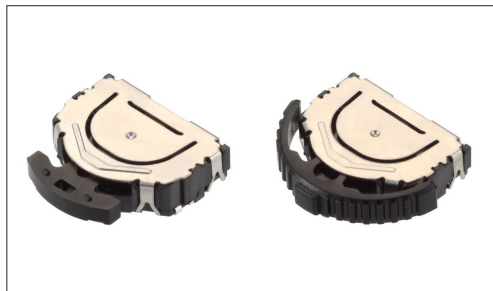


Multi Control Devices **Switch Type**

Lever and Push Operation Type
SLLB Series

Compact, thin-profile horizontal type suitable for a wide range of applications.



- Directional resolution: 2-direction
- Ratings (max.)/(min.) (Resistive load): 10mA 5V DC/50μA 3V DC
- Operating temperature range: -40°C to +85°C

Applications: Audio_TV:Cameras

■ Product List

Products No.	Actuator configuration	Push-on switch	Operating force		Travel (Center push) (mm)	Location lug	Dimensions (WxDxH) (mm)	Automotive	Drawing No.
			Lever portion	Push portion					
SLLB120100	Mounting knob	With	0.65±0.3N	2±1N	Refer to the dimensions	With	11.8×11.4×3.0	—	1
SLLB120200	Mounting knob integrated	With	0.65±0.3N	2±1N	Refer to the dimensions	With	11.8×11.4×3.0	—	2
SLLB120300	Mounting knob integrated	With	0.65±0.3N	2±1N	Refer to the dimensions	With	11.8×11.4×3.0	—	

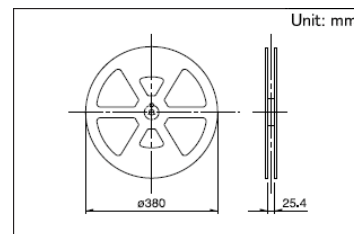
⚠ Note

1. This catalog shows only outline specifications. When using the products, please obtain formal specifications for supply.
2. Please place purchase orders for taping products per minimum order unit (1 reel or a case).

■ Packing Specifications

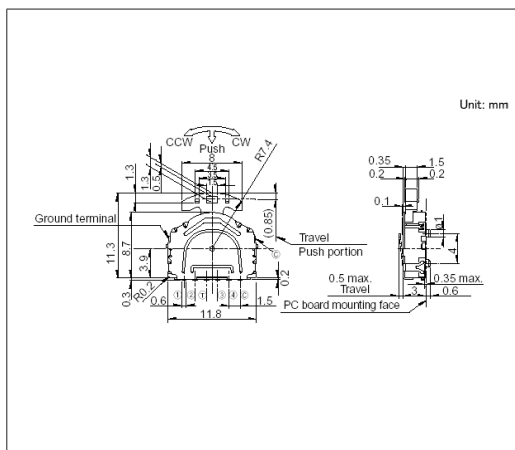
Taping

Number of packages (pcs.)			Tape width (mm)	Export package measurements (mm)
1 reel	1 case / Japan	1 case / export packing		
1,350	2,700	5,400	24	428×413×172

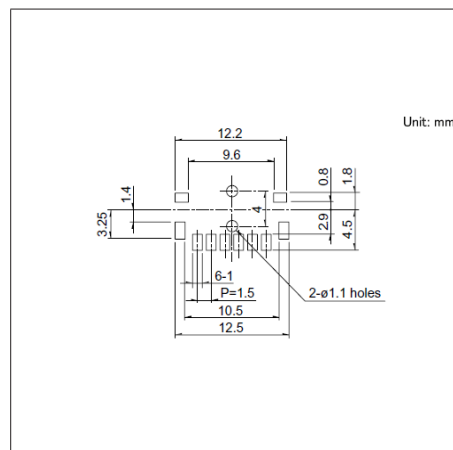


Drawing No. 1

■ Dimensions

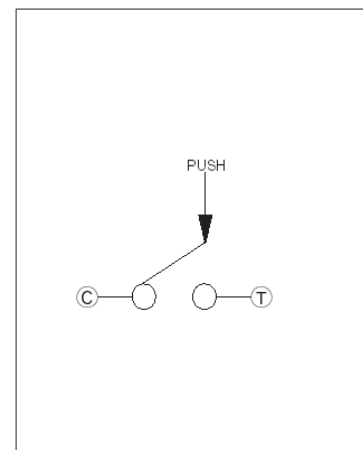


■ Land Dimensions



Viewed from mounting face.

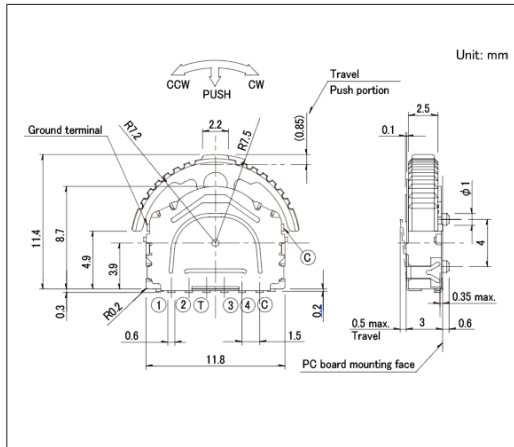
■ Circuit Diagram



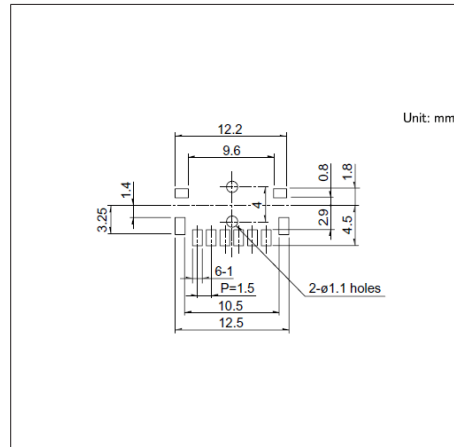
Push portion.

Drawing No.2

■ Dimensions

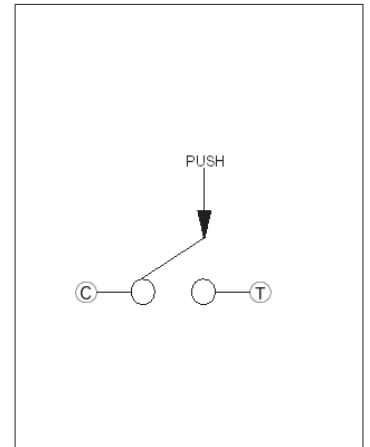


■ Land Dimensions



Viewed from mounting face.

■ Circuit Diagram



Push portion.