



FCIconnect.com

Copyright FCI

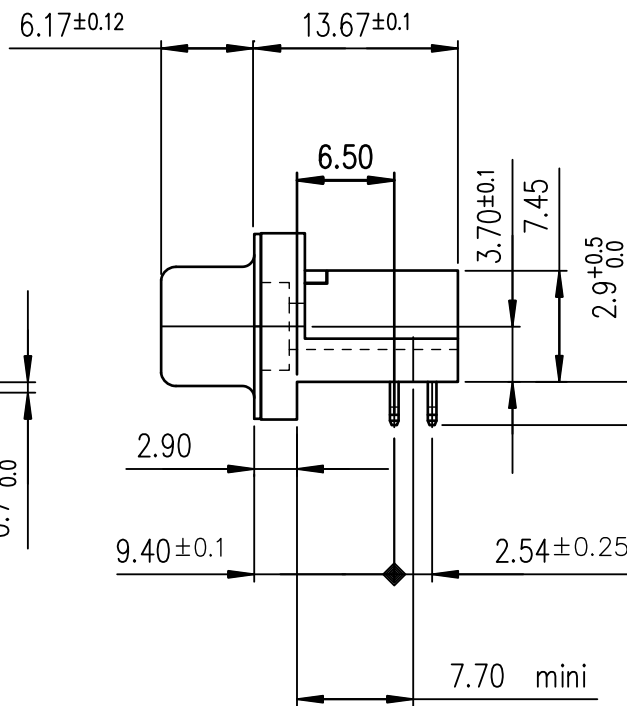
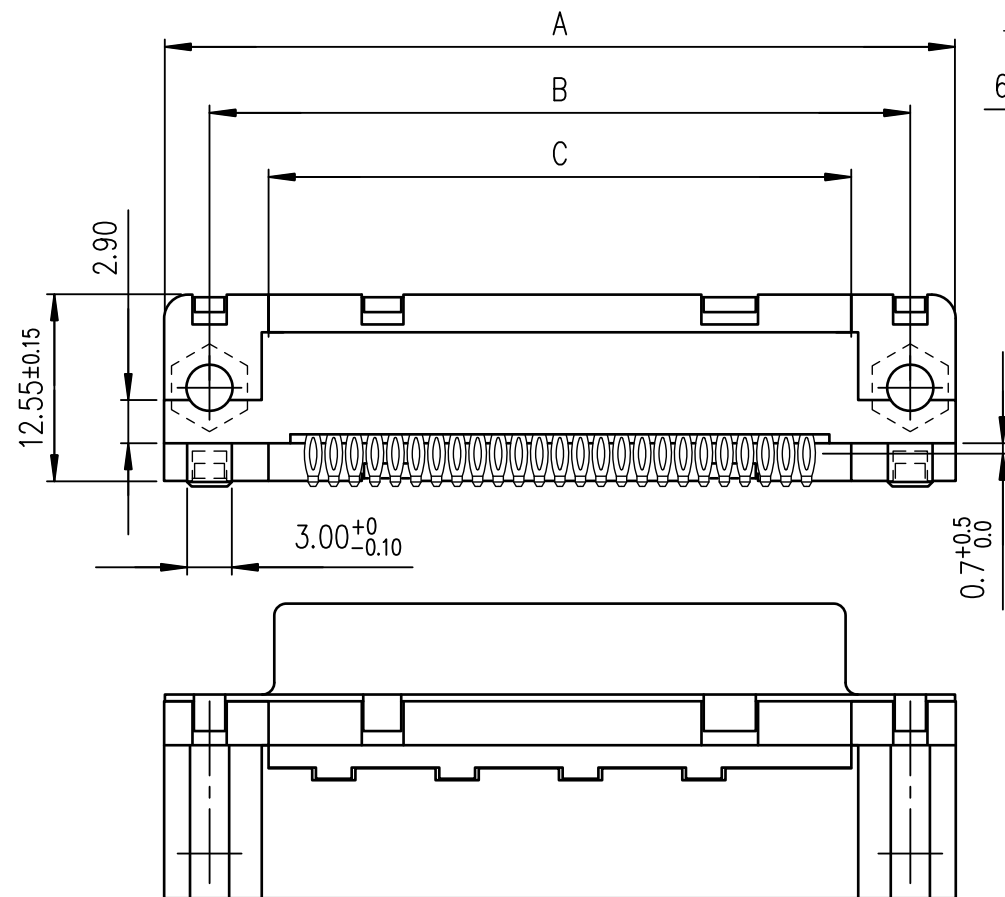
TIN LEAD PART NUMBER

SHELL	A±0.38	B±0.12	C±0.10	D±0.25	E±0.07	PART NUMBER	PART NUMBER
09	30.81	24.99	18.00	16.21	10.96	D09S82C4PA00	D09S82C6PA00
15	39.14	33.32	26.32	24.54	19.18	D15S82C4PA00	D15S82C6PA00
25	53.03	47.04	40.04	38.25	33.12	D25S82C4PA00	D25S82C6PA00
37	69.32	63.50	56.50	54.71	49.68	D37S82C4PA00	D37S82C6PA00
Gold flash						0.76 µ gold	

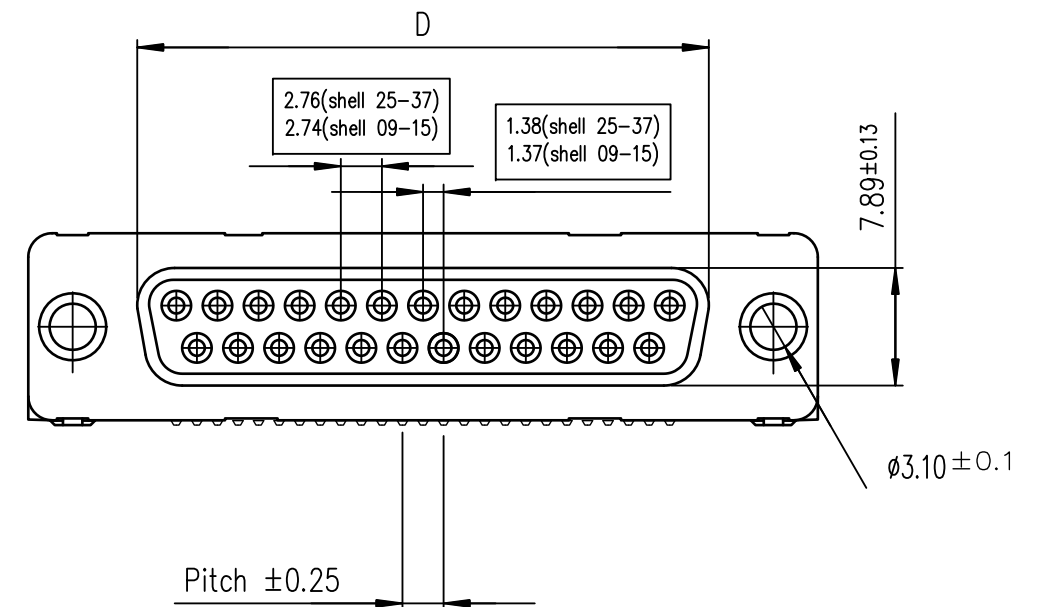
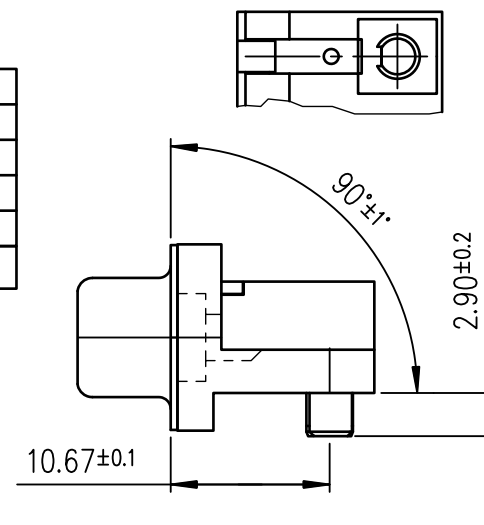
LEAD FREE PART NUMBER

SHELL	A±0.38	B±0.12	C±0.10	D±0.25	E±0.07	PART NUMBER	PART NUMBER
09	30.81	24.99	18.00	16.21	10.96	D09S82C4PA00LF	D09S82C6PA00LF
15	39.14	33.32	26.32	24.54	19.18	D15S82C4PA00LF	D15S82C6PA00LF
25	53.03	47.04	40.04	38.25	33.12	D25S82C4PA00LF	D25S82C6PA00LF
37	69.32	63.50	56.50	54.71	49.68	D37S82C4PA00LF	D37S82C6PA00LF
Gold flash						0.76 µ gold	

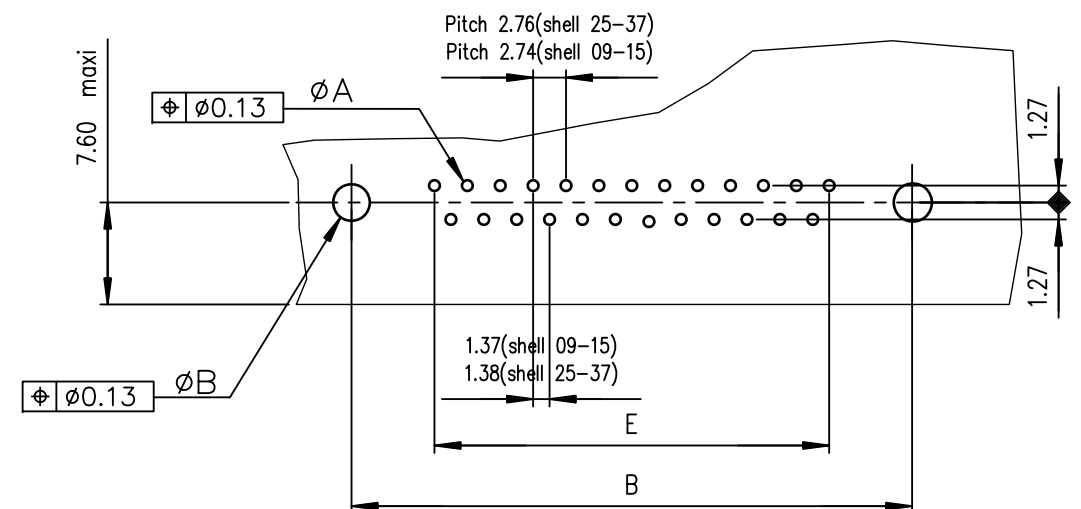
view shown without plastic pin



Detail of integral plastic pin

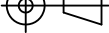




PC card drilling dimensions(after plating)  
(thickness 1.60 or 2.40±0.20mm)



### GENERAL CHARACTERISTICS AND ROHS INFORMATIONS:

SEE DRAWING C01-8646-0001

mat'l. code —				surface ISO 1302 ✓		tolerance ISO 406 ISO 1101		projection 		product family D—SUB																																																																																																																																																																																																																																																																																																																																																																																																																																																																																																																																																																																																																																																																																																																																																																																																																																																																																																																																																																																																																																																																																																																																																																																																																																																																																																																																																																																																																																																																																																																																												
ltr	ecn no	dr	date	tolerances unless			otherwise specified			MM 	title FEMALE CONNECTOR DELTA-D EUROSTYLE RIGHT ANGLED PRESS FIT																																																																																																																																																																																																																																																																																																																																																																																																																																																																																																																																																																																																																																																																																																																																																																																																																																																																																																																																																																																																																																																																																																																																																																																																																																																																																																																																																																																																																																																																																																																																											
M	ELX-I-18050	MP	2014/06/23	angles	linear	.0±.0.1			scale 2:1																																																																																																																																																																																																																																																																																																																																																																																																																																																																																																																																																																																																																																																																																																																																																																																																																																																																																																																																																																																																																																																																																																																																																																																																																																																																																																																																																																																																																																																																																																																																													
						.00±0.1																																																																																																																																																																																																																																																																																																																																																																																																																																																																																																																																																																																																																																																																																																																																																																																																																																																																																																																																																																																																																																																																																																																																																																																																																																																																																																																																																																																																																																																																																																																																																
						.000±0.1																																																																																																																																																																																																																																																																																																																																																																																																																																																																																																																																																																																																																																																																																																																																																																																																																																																																																																																																																																																																																																																																																																																																																																																																																																																																																																																																																																																																																																																																																																																																																
				dr	PESSON			1994/02/01				dwg no					sheet 1 of 1			size																																																																																																																																																																																																																																																																																																																																																																																																																																																																																																																																																																																																																																																																																																																																																																																																																																																																																																																																																																																																																																																																																																																																																																																																																																																																																																																																																																																																																																																																																																																																		
				engr	MITHUN PAUL			2014/06/23				C01—8646—0219					A3																																																																																																																																																																																																																																																																																																																																																																																																																																																																																																																																																																																																																																																																																																																																																																																																																																																																																																																																																																																																																																																																																																																																																																																																																																																																																																																																																																																																																																																																																																																																					
				chr	ALIAS BABU			2014/06/23				type Product Customer Drawing																																																																																																																																																																																																																																																																																																																																																																																																																																																																																																																																																																																																																																																																																																																																																																																																																																																																																																																																																																																																																																																																																																																																																																																																																																																																																																																																																																																																																																																																																																																																										
				appd	BIJU K PAUL			2014/06/23																																																																																																																																																																																																																																																																																																																																																																																																																																																																																																																																																																																																																																																																																																																																																																																																																																																																																																																																																																																																																																																																																																																																																																																																																																																																																																																																																																																																																																																																																																																																														
sheet index		revision sheet		M	1																																																																																																																																																																																																																																																																																																																																																																																																																																																																																																																																																																																																																																																																																																																																																																																																																																																																																																																																																																																																																																																																																																																																																																																																																																																																																																																																																																																																																																																																																																																																																	</

