

PRODUCT NUMBER
20020731-XXXXXXLF

20020731-

PITCH

Y: 15.0 mm

POLES

02: 2 POLES
03: 3 POLES
04: 4 POLES


10: 10 POLES

LF : DENOTED RoHS COMPATIBLE

1 : STANDARD PRODUCT
W/ BOX PACKING

SCREW CODE

CODE	SCREW TYPE	AVAILABILITY
A	-/+	ON REQUEST ONLY
B	-	STANDARD

PROPERTY TABLE			
FCI SERIES NAME		40-1500	
PITCH (mm)		15.0	
VOLTAGE RATING (VAC)		600	
CURRENT RATING (A)		125	
APPLICABLE WIRE RANGE (AWG)		1-WIRE	2~20
		2-WIRE	10
WIRE CROSS SECTION (mm ²)		SOLID	1-WIRE 35
			2-WIRE 6.0
		STRANDED	1-WIRE 25
			2-WIRE 6.0
OPENING CONTACT HOUSING(mm ²)		8.1x8.4	
WIRE STRIP LENGTH(mm)		15~18	
TORQUE +/-10% (N-M/Lb-in)		4.12/36.5	
SCREW		M5.0x0.8	
WITHSTANDING VOLTAGE (kV)		2.2	
OPERATING TEMP. (°C)		-40~+115	
SOLDERING TEMP. (°C)		250±10 (5 sec.)	
POLES AVAILABLE		02~10	
SAFETY CERTIFICATE			

HOUSING CODE

CODE	COLOR	AVAILABILITY
1	GREEN(RAL 6018/T)	STANDARD
2	BLACK	ON REQUEST ONLY
3	GREY(RAL 7004/P)	ON REQUEST ONLY
4	BLUE(RAL 5015/A)	ON REQUEST ONLY

NOTES:

1.MATERIAL:

1-1 HOUSIN: THERMOPLASTIC RESIN, UL94V-0 RATED.

1-2 SCREW: STEEL, ZINC PLATED.

1-3 CLAMP: COPPER ALLOY, NICKEL PLATED.

1-1 TERMINAL: COPPER ALLOY TIN PLATED.

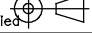
2. PRODUCT SPECIFICATION REFER TO FCI GS-12-625.

3. PRODUCT PACKING SPECIFICATION REFER TO FCI GS-14-1394.

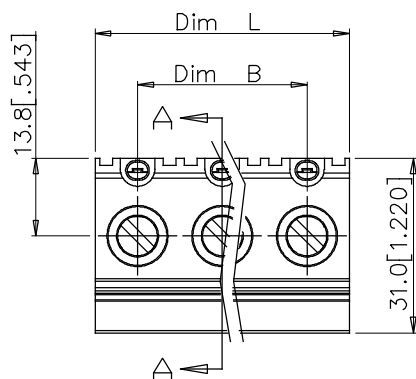
4. FCI, SAFETY CERTIFICATE LOGO AND SERIES NAME TO BE SHOWN ON PRODUCT SURFACE.

5. THE PRODUCTS WHERE THE PART NUMBER END IN "LF" MEET THE EUROPEAN UNION DIRECTIVE AND OTHER COUNTRY REGULATIONS AS DESCRIBED IN GS-22-008.

6. RECOMENDED SOLDERING PROCESS BY WAVE SOLDER.

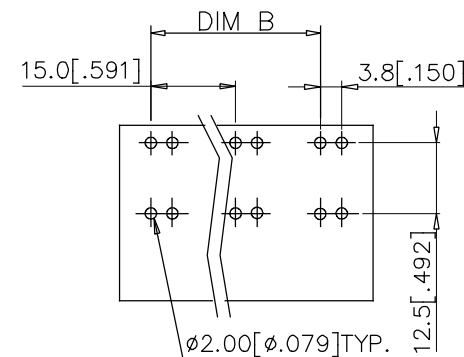
mat'l. code				surface ASME Y14.5	tolerance ASME Y14.5	projection 	product family TERMINAL BLOCK
ltr	ecn no	dr	date	tolerances unless otherwise specified			title
A	T10-0138	WL	083110	angles	X.±0.5	MM	TERMINAL BLOCK FIXED POWER PLUG, MIDDLE CONTACT
B	T10-0172	WL	102010	±0.1	X.X±0.3	[INCH]	
C	T-005202	WL	081911	X*±1*	X.XX±0.1	scale	dwg no
D	T-010814	LS	031912	dr	WENDY CHEN	082310	sheet 1 of 2
				enrg	JASON HSU	082310	size
				chr	GARY HSIEH	082310	A4
				appd	JOSEPH HSIA	082310	type
sheet	revision	D	D				CUSTOMER Drawing
index	sheet	1	2				

PRODUCT NUMBER	SERIES NAME	PITCH
20020731-YXXXXXXLF	40-1500	15.0 mm

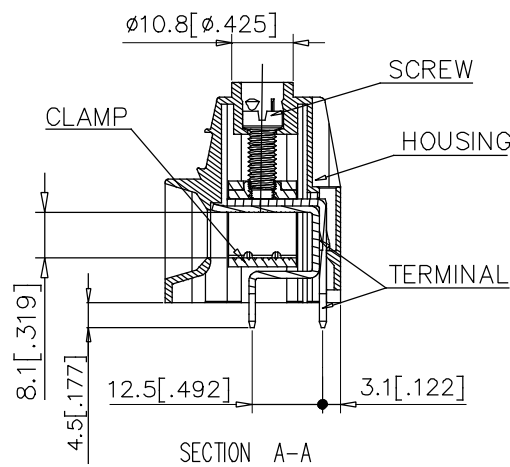
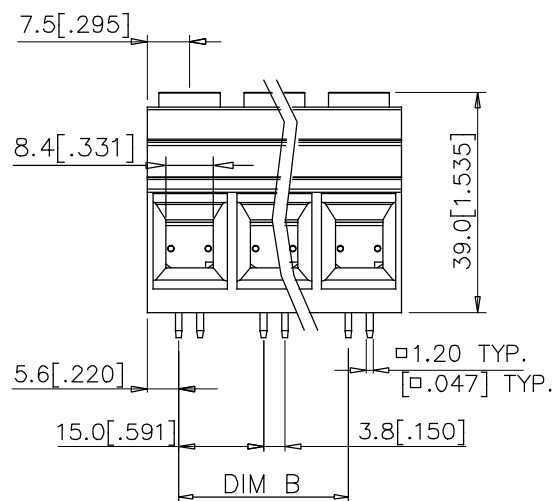
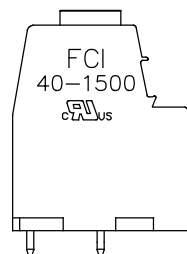


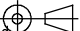
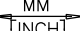

N = Number of poles
 Dim L = $N \times 15.0 [.591]$
 Dim B = $(N-1) \times 15.0 [.591]$

Poles	Tolerance
2-3p	$\pm 0.30 [.012]$
4-5p	$\pm 0.50 [.020]$
6-10p	$\pm 0.80 [.031]$



Recommended P.C.B. Layout



mat'l. code				surface ASME Y14.5		tolerance ASME Y14.5		projection 		product family TERMINAL BLOCK																																																																																																																																																																																																																																																																																																																																																																																																																																																																																																																																																																																																																																																		
ltr	ecn no		dr	date	tolerances unless otherwise specified							title																																																																																																																																																																																																																																																																																																																																																																																																																																																																																																																																																																																																																																																
D					linear	angles	X.±0.5		 MM [INCH]	TERMINAL BLOCK FIXED POWER PLUG, MIDDLE CONTACT																																																																																																																																																																																																																																																																																																																																																																																																																																																																																																																																																																																																																																																		
						X.X±0.3																																																																																																																																																																																																																																																																																																																																																																																																																																																																																																																																																																																																																																																						
						X'±1"																																																																																																																																																																																																																																																																																																																																																																																																																																																																																																																																																																																																																																																						
						dr	WENDY CHEN		082310			dwg no				sheet 2 of 2				size																																																																																																																																																																																																																																																																																																																																																																																																																																																																																																																																																																																																																																								
						engr	JASON HSU		082310			20020731				A4																																																																																																																																																																																																																																																																																																																																																																																																																																																																																																																																																																																																																																												
						chr	GARY HSIEH		082310																																																																																																																																																																																																																																																																																																																																																																																																																																																																																																																																																																																																																																																			
						appd	JOSEPH HSIA		082310			type CUSTOMER Drawing																																																																																																																																																																																																																																																																																																																																																																																																																																																																																																																																																																																																																																																
sheet index		revision sheet																																																																																																																																																																																																																																																																																																																																																																																																																																																																																																																																																																																																																																																										