

Data Sheet

LL01CR-CZP03115L52

CREE 
 ▶ LED Solution Provider



■ Features & Typical Applications

- High efficiency
- Available with 1 beam angle
- Optimized Uniformity
- Lens without Holder
- Linear light distribution for decorative lighting

■ Table of Contents

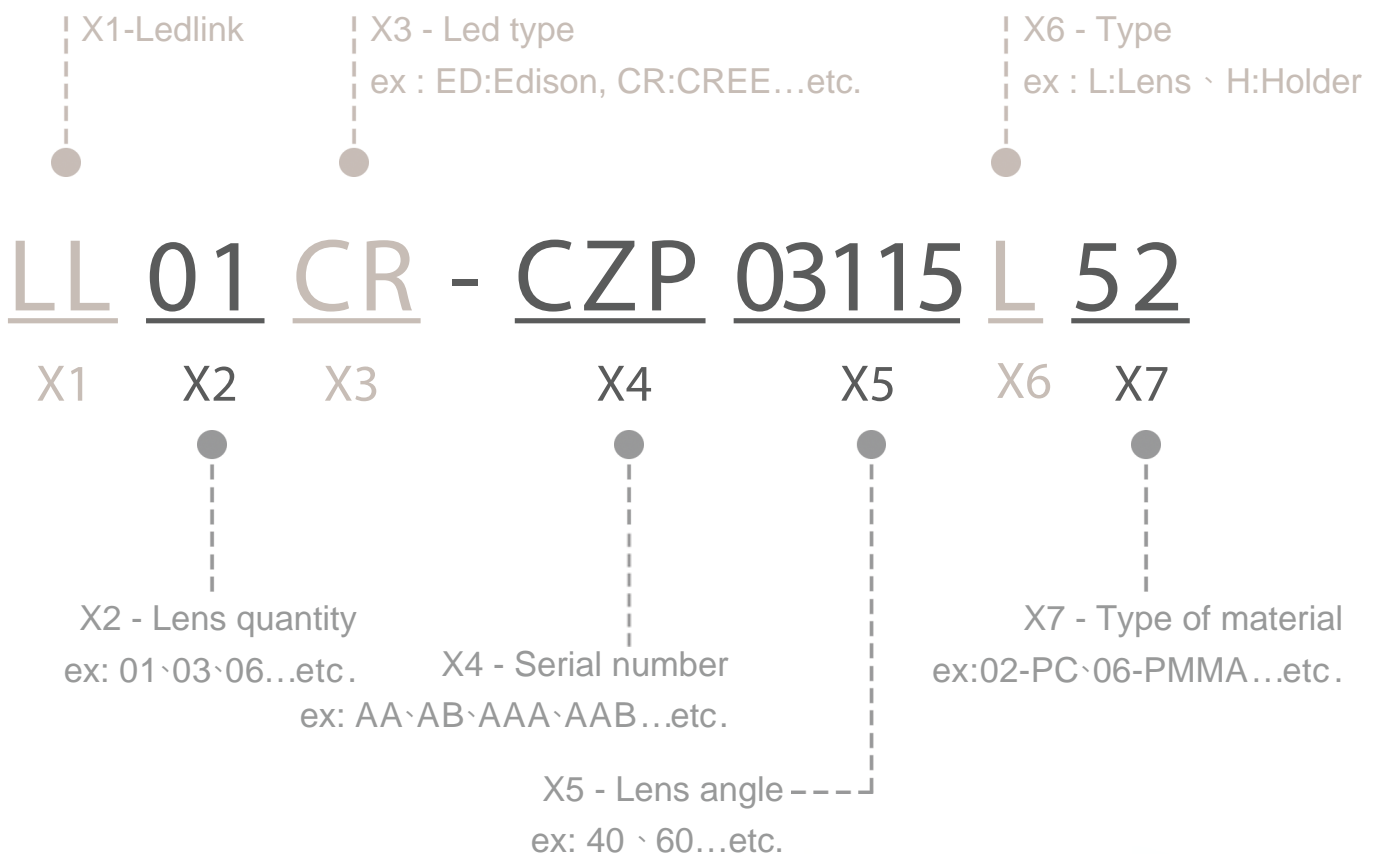
General Information & Product Nomenclature.....	P.2
Optical Specifications	P.3
Mechanical Specifications	P.4
.....	P.5

LL01CR-CZP03115L52

General Information

- Lens Material : SABIC 2180T.
- Operating Temperature range $-40^{\circ}\text{C} \sim +70^{\circ}\text{C}$ (upper limit $+80^{\circ}\text{C}$).
- Storage Temperature range $-40^{\circ}\text{C} \sim +70^{\circ}\text{C}$ (upper limit $+80^{\circ}\text{C}$).
 - * Average transmittance in visible spectrum $400\text{nm} \sim 700\text{nm} > 90\%$.
(For raw material only)
- Usage and Maintenance:
 1. If necessary, clean lenses with mild soap, water and soft cloth.
 2. Never use any commercial cleaning solvents on lenses, like alcohol.
 3. Please handle or install lenses with wearing gloves, skin oils may damage lens or its optical characteristic.

Product Nomenclature



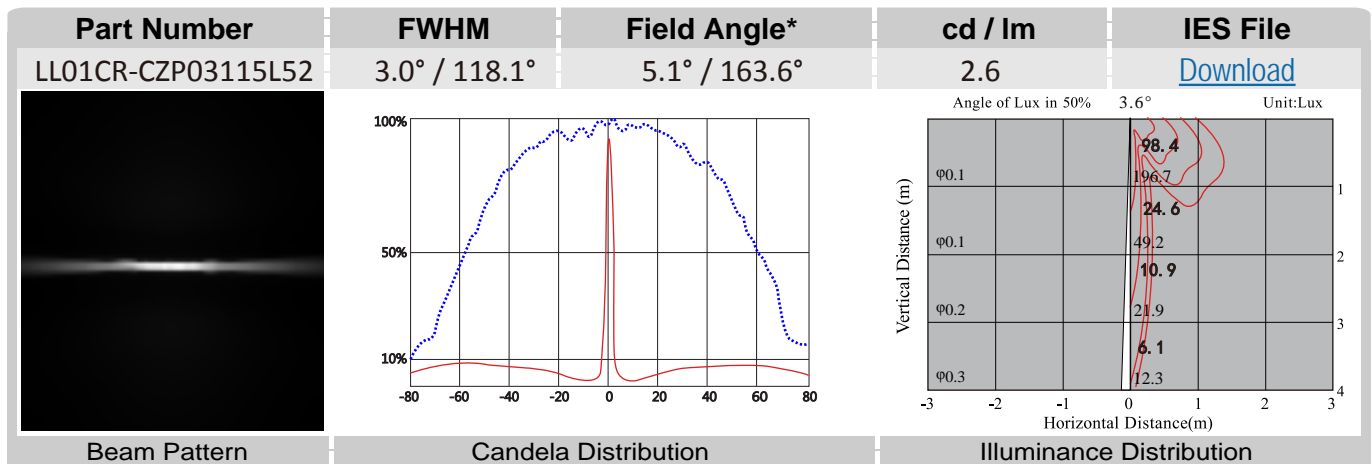
LL01CR-CZP03115L52

Optical Specifications

CREE 
 LED Solution Provider



Note: (1) All the results of analysis are based on 0 degrees of elevation.
 (2) Tolerance: $\pm 10\%$.
 (3) Led Luminous Flux(lm): 76($\pm 5\%$).



*The Field Angle is the angle between the two directions opposed to each other over the beam axis for which the luminous intensity is 10% that of the maximum luminous intensity.
 *This testing result is obtained through testing the popular rank LED samples which provided by the original manufacturer. Hence, the testing results would be varied as the users choose same LED model but different rank.

LL01CR-CZP03115L52

Mechanical Specification

Note: (1) All dimensions are in mm.

1. Fixing method

☐ Glue

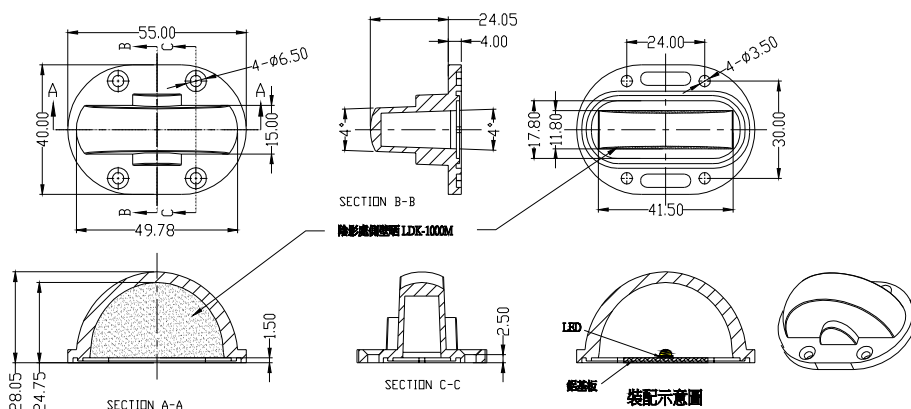
☒ Screw

☐ Tape

☐ Fixing-ring

☐ Frame

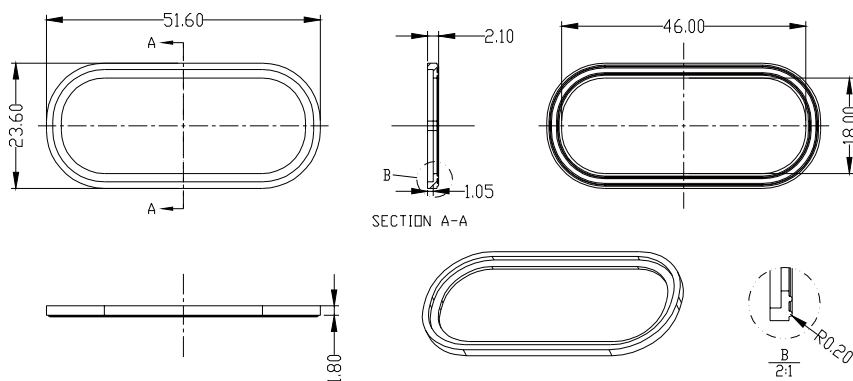
2. Lens dimension



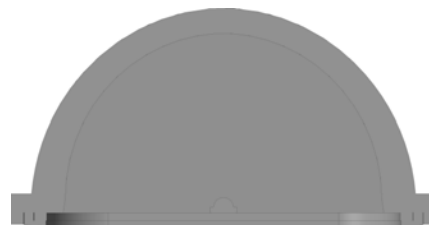
3. Assembly instruction



4. Rubber dimension



5. View assembly lens with LED:

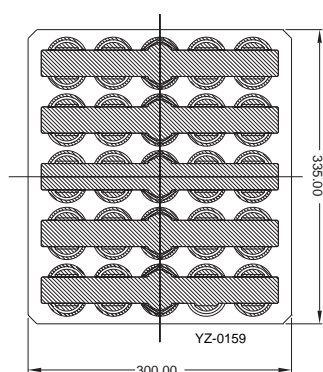


Rubber part number :LL01A00SUX2

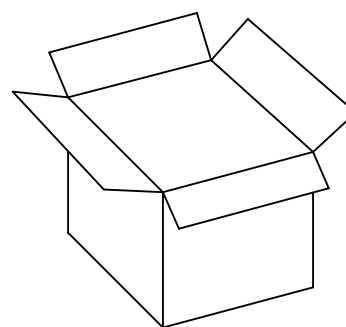
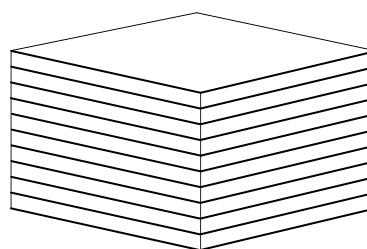
LL01CR-CZP03115L52

Package Specifications

Item	Quantity	Total	Size(L*W*H)	G.W
plastic box	25 pcs/plastic box	25 pcs	33.5*30*1.6 cm	13.6g
outer box	6 plastic box/outer box	150 pcs	35*31*21 cm	



25 pcs/plastic box



150 pcs/outer box



Note: