



Part Number : [936010261](#)

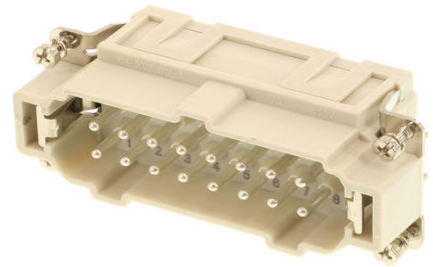
Product Description : Heavy-Duty Push-in Terminal Insert, Male, 16-Pole, 16A, Numbered 1-16, Silver (Ag) Plated Contacts, Size 16B «77x27»

Series Number : 93601

Status : Active

Product Category : Heavy-Duty Connectors


Engineering Part Number : 7316.5963.0



Documents and Resources

Product Environment Compliance

Compliance

GADSL/IMDS	Not Relevant
China RoHS	 per SJ/T 11365-2006
EU ELV	Not Relevant
Low-Halogen Status	Low-Halogen per IEC 61249-2-21
REACH SVHC	Contains Lead per D(2025)7771-DC (04 Feb 2026)
EU RoHS	Compliant with Exemption 6(c) per EU 2015/863

Compliance Statements

- EU RoHS
- REACH SVHC
- Low-Halogen

Industry Documents

- IPC 1752A Class C
- IPC 1752A Class D
- Molex Product Compliance Declaration
- IEC-62474
- chemSHERPA (xml)

Substances of Interest

- PFAS

[EU RoHS Certificate of Compliance](#)

[Additional Product Compliance Information](#)

[UKCA - Declaration of Conformity](#)

[CE - Declaration of Conformity](#)

Part Details

General

Status	Active
Category	Heavy Duty Connectors
Series	93601
Description	Heavy-Duty Push-in Terminal Insert, Male, 16-Pole, 16A, Numbered 1-16, Silver (Ag) Plated Contacts, Size 16B «77x27»
Comments	Stranded wire with bush terminal 0.14-2.50 (26-14 AWG), Stranded wires with single strand greater than and equal to 0.20mm (16-12 AWG), and Solid wires 0.50-2.50 (20-14 AWG)
Component Type	Inserts - Push-in Terminal
Insert Series	S-EP
Product Name	Heavy-Duty Connectors
Standard	CSA C22.2 NO. 182.3, EN 60664-1, EN 61984, UL 1977
UPC	887191879598

Agency

CSA	256883
UL	E249674

Electrical

Current - Maximum per Contact	16.0A
Voltage - Maximum	500V

Physical

Component Size	16B «77X27»
----------------	-------------

Durability (mating cycles max)	500
Gender	Male
Insert Color	Grey
Material - Contact	Copper Alloy
Material - Insert	Polycarbonate
Material - Plating	Silver
Net Weight	95.800/g
Number of Rows	2
Packaging Type	Bag
Polarized to Mating Part	Yes
Poles	16
Stripping Length	9.00-11.00mm
Temperature Range - Operating	-40° to +125°C
Wire Size (AWG)	12-16, 14-20, 14-26
Wire Size mm ²	0.14-2.50, 0.50-2.50, 1.50-4.00

Mates With / Use With

Mates with Part(s)

Description	Part Number
Heavy-Duty Push-in Terminal Insert, Female, 16-Pole, 16A, Numbered 1-16, Silver (Ag) Plated Contacts, Size 16B «77x27»	<u>936010257</u>

Use with Part(s)

Description	Part Number
Use With	Size 16B «77x27» Hoods and Housings

This document was generated on May 04, 2026