



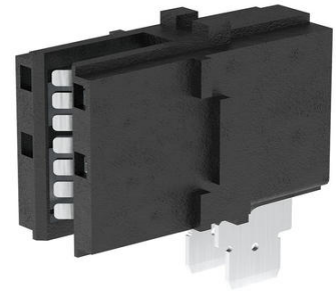
Part Number : [2132050001](#)

Product Description : PowerPlane Busbar Receptacle Assembly, Middle Size, Right-Angle, Through-Hole, 3.00mm and 3.18mm Bus Bar Thickness

Series Number : 213205

Status : Active

Product Category : PCB Headers and Receptacles



Documents and Resources

Drawings

[2132050001_sd.pdf](#)

3D Models and Design Files

[STEP AP242](#)

[SOLIDWORKS](#)

[Creo](#)

[Symbol and Footprint \(Multi-Format\)](#)


Specifications

[2131910001-AS-000.pdf](#)

[2131910001-PS-000.pdf](#)

Product Environment Compliance

Compliance

GADSL/IMDS	Not Relevant
China RoHS	 per SJ/T 11365-2006
EU ELV	Not Relevant
Low-Halogen Status	Low-Halogen per IEC 61249-2-21
REACH SVHC	Not Contained per D(2025)7771-DC (04 Feb 2026)
EU RoHS	Compliant per EU 2015/863

[Compliance Statements](#)

- EU RoHS

- REACH SVHC
- Low-Halogen

Industry Documents

- IPC 1752A Class C
- IPC 1752A Class D
- Molex Product Compliance Declaration
- IEC-62474
- chemSHERPA (xml)

Substances of Interest

- PFAS

EU RoHS Certificate of Compliance

Additional Product Compliance Information

Part Details

General

Status	Active
Category	PCB Headers and Receptacles
Series	213205
Description	PowerPlane Busbar Receptacle Assembly, Middle Size, Right-Angle, Through-Hole, 3.00mm and 3.18mm Bus Bar Thickness
Component Type	PCB Receptacle
Product Name	PowerPlane
UPC	193264831289

Agency

CSA	LR19980
UL	E29179

Electrical

Current - Maximum per Contact	200.0A
Voltage - Maximum	1000V

Physical

Circuits (Loaded)	1
Circuits (maximum)	1

Color - Resin	Black
Durability (mating cycles max)	200
First Mate / Last Break	No
Flammability	94V-0
Gender	Female
Glow-Wire Capable	No
Guide to Mating Part	No
Keying to Mating Part	No
Lock to Mating Part	No
Material - Metal	Copper Alloy
Material - Plating Mating	Silver
Material - Plating Termination	Tin
Material - Resin	Liquid Crystal Polymer (LCP)
Mounting Style	Through Hole
Net Weight	11.721/g
Number of Rows	1
Orientation	Right Angle
Packaging Type	Tray
PCB Locator	No
PCB Retention	Yes
PCB Thickness - Recommended	4.80mm
Pitch - Mating Interface	N/A
Pitch - Termination Interface	5.80mm
Polarized to Mating Part	No
Polarized to PCB	Yes
Stackable	No
Temperature Range - Operating	-40° to +125°C
Termination Interface Style	Through Hole

This document was generated on Jun 02, 2026