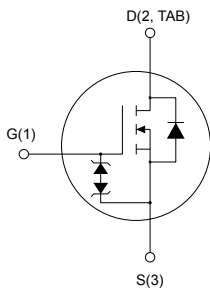
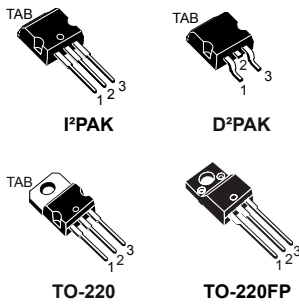




STB7NK80Z-1, STB7NK80ZT4 STP7NK80Z, STP7NK80ZFP

Datasheet

N-channel 800 V, 1.5 Ω typ., 5.2 A SuperMESH Power MOSFETs in an I²PAK, D²PAK, TO-220 and TO-220FP packages



AM01476v1_tab



Features

Order code	V _{DS}	R _{DS(on)} max.	I _D
STB7NK80Z-1	800 V	1.8 Ω	5.2 A
STB7NK80ZT4			
STP7NK80Z			
STP7NK80ZFP			

- 100% avalanche tested
- Extremely high dv/dt capability
- Gate charge minimized
- Zener-protected

Applications

- Switching applications

Description

These high-voltage devices are Zener-protected N-channel Power MOSFETs developed using the SuperMESH technology by STMicroelectronics, an optimization of the well-established PowerMESH. In addition to a significant reduction in on-resistance, these devices are designed to ensure a high level of dv/dt capability for the most demanding applications.

Product status links

[STB7NK80Z-1](#)

[STB7NK80ZT4](#)

[STP7NK80Z](#)

[STP7NK80ZFP](#)

1 Electrical ratings

Table 1. Absolute maximum ratings

Symbol	Parameter	Value		Unit
		I ² PAK D ² PAK TO-220	TO-220FP	
V _{DS}	Drain-source voltage	800		V
V _{GS}	Gate-source voltage	±30		V
I _D	Drain current (continuous) at T _C = 25 °C	5.2	5.2 ⁽¹⁾	A
	Drain current (continuous) at T _C = 100 °C	3.3	3.3 ⁽¹⁾	
I _{DM} ⁽²⁾	Drain current (pulsed)	20.8	20.8 ⁽¹⁾	A
P _{TOT}	Total power dissipation at T _C = 25 °C	125	30	W
ESD	Gate-source human body model (C = 100 pF, R = 1.5 kΩ)	4		kV
dv/dt ⁽³⁾	Peak diode recovery voltage slope	4.5		V/ns
V _{ISO}	Insulation withstand voltage (RMS) from all three leads to external heat sink (t = 1 s, T _C = 25 °C)	-	2.5	kV
T _{stg}	Storage temperature range	-55 to 150		°C
T _J	Operating junction temperature range			°C

1. Limited by maximum junction temperature.
2. Pulse width is limited by safe operating area.
3. I_{SD} ≤ 5.2 A, di/dt ≤ 200 A/μs, V_{DS} (peak) < V_{(BR)DSS}.

Table 2. Thermal data

Symbol	Parameter	Value				Unit
		I ² PAK	D ² PAK	TO-220	TO-220FP	
R _{thJC}	Thermal resistance, junction-to-case	1			4.2	°C/W
R _{thJA}	Thermal resistance, junction-to-ambient	62.5				°C/W

Table 3. Avalanche characteristics

Symbol	Parameter	Value	Unit
I _{AR}	Avalanche current, repetitive or not repetitive (pulse width is limited by T _J max.)	5.2	A
E _{AS}	Single pulse avalanche energy (starting T _J = 25 °C, I _D = I _{AR} , V _{DD} = 50 V)	210	mJ

2 Electrical characteristics

$T_C = 25\text{ °C}$ unless otherwise specified.

Table 4. On/off states

Symbol	Parameter	Test conditions	Min.	Typ.	Max.	Unit
$V_{(BR)DSS}$	Drain-source breakdown voltage	$I_D = 1\text{ mA}$, $V_{GS} = 0\text{ V}$	800	-	-	V
I_{DSS}	Zero gate voltage drain current	$V_{GS} = 0\text{ V}$, $V_{DS} = 800\text{ V}$	-	-	1	μA
		$V_{GS} = 0\text{ V}$, $V_{DS} = 800\text{ V}$, $T_C = 125\text{ °C}^{(1)}$	-	-	50	
I_{GSS}	Gate-body leakage current	$V_{GS} = \pm 20\text{ V}$, $V_{DS} = 0\text{ V}$	-	-	± 10	μA
$V_{GS(th)}$	Gate threshold voltage	$V_{DS} = V_{GS}$, $I_D = 100\text{ }\mu\text{A}$	3.00	3.75	4.50	V
$R_{DS(on)}$	Static drain-source on-resistance	$V_{GS} = 10\text{ V}$, $I_D = 2.6\text{ A}$	-	1.5	1.8	m Ω

1. Specified by design, not tested in production.

Table 5. Dynamic

Symbol	Parameter	Test conditions	Min.	Typ.	Max.	Unit
C_{iss}	Input capacitance	$V_{DS} = 25\text{ V}$, $f = 1\text{ MHz}$, $V_{GS} = 0\text{ V}$	-	1138	-	pF
C_{oss}	Output capacitance		-	122	-	pF
C_{rss}	Reverse transfer capacitance		-	25	-	pF
$C_{oss\text{ eq.}}^{(1)}$	Equivalent output capacitance	$V_{GS} = 0\text{ V}$, $V_{DS} = 0\text{ to }640\text{ V}$	-	50	-	pF
Q_g	Total gate charge	$V_{DD} = 640\text{ V}$, $I_D = 5.2\text{ A}$, $V_{GS} = 0\text{ to }10\text{ V}$ (see the Figure 16. Test circuit for gate charge behavior)	-	40	56 ⁽²⁾	nC
Q_{gs}	Gate-source charge		-	7	-	nC
Q_{gd}	Gate-drain charge		-	21	-	nC

1. $C_{oss\text{ eq.}}$ is defined as the constant equivalent capacitance giving the same charging time as C_{oss} when V_{DS} increases from 0 to 80% V_{DSS} .

2. Specified by design, not tested in production.

Table 6. Switching times

Symbol	Parameter	Test conditions	Min.	Typ.	Max.	Unit
$t_{d(on)}$	Turn-on delay time	$V_{DD} = 400\text{ V}$, $I_D = 2.6\text{ A}$, $R_G = 4.7\text{ }\Omega$, $V_{GS} = 10\text{ V}$	-	20	-	ns
t_r	Rise time		-	12	-	ns
$t_{d(off)}$	Turn-off delay time	(see the Figure 15. Test circuit for resistive load switching times and Figure 20. Switching time waveform)	-	45	-	ns
t_f	Fall time		-	20	-	ns

Table 7. Source-drain diode

Symbol	Parameter	Test conditions	Min.	Typ.	Max.	Unit
I_{SD}	Source-drain current		-	-	5.2	A
$I_{SDM}^{(1)}$	Source-drain current (pulsed)		-	-	20.8	A
$V_{SD}^{(2)}$	Forward on voltage	$I_{SD} = 5.2 \text{ A}$, $V_{GS} = 0 \text{ V}$	-	-	1.6	V
t_{rr}	Reverse recovery time	$I_{SD} = 5.2 \text{ A}$, $di/dt = 100 \text{ A}/\mu\text{s}$,	-	530	-	ns
Q_{rr}	Reverse recovery charge	$V_{DD} = 50 \text{ V}$, $T_J = 150 \text{ }^\circ\text{C}$	-	3.31	-	μC
I_{RRM}	Reverse recovery current	(see the Figure 17. Test circuit for inductive load switching and diode recovery times)	-	12.5	-	A

1. Pulse width is limited by safe operating area.
2. Pulsed: pulse duration = 300 μs , duty cycle 1.5%.

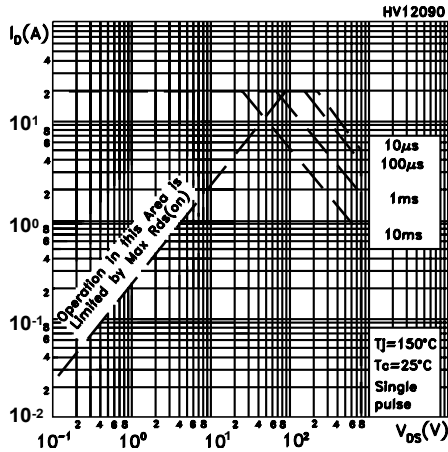
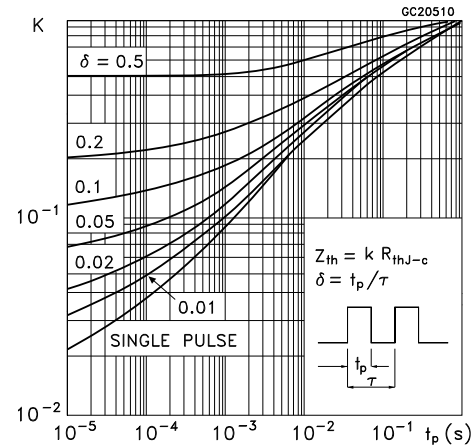
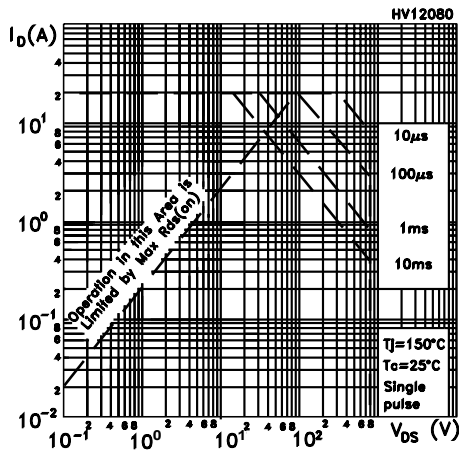
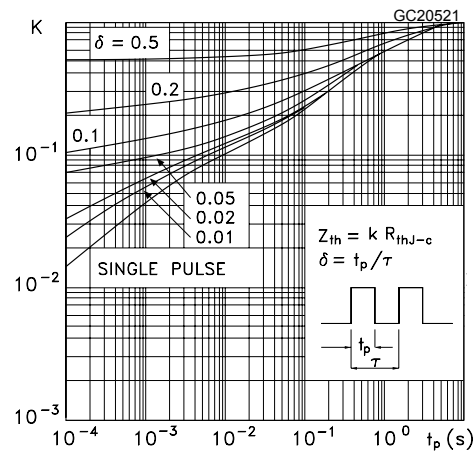
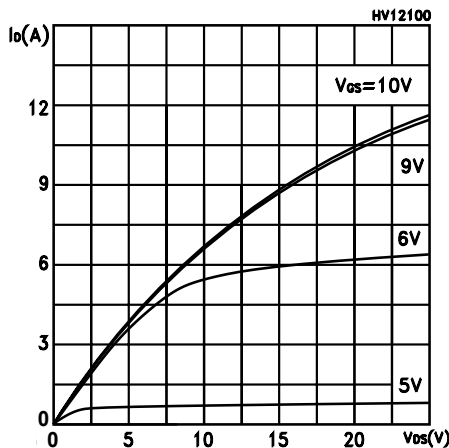
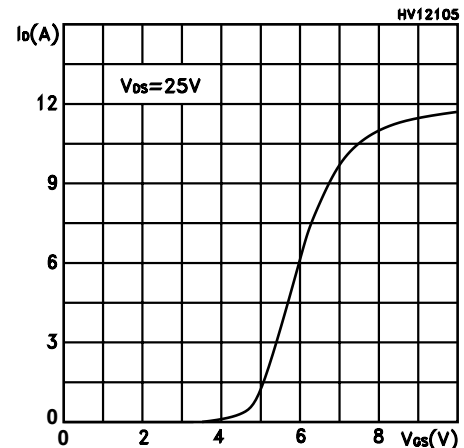
2.1 Electrical characteristics (curves)
Figure 1. Safe operating area for I²PAK, D²PAK and TO-220

Figure 2. Normalized transient thermal impedance for I²PAK, D²PAK and TO-220

Figure 3. Safe operating area for TO-220FP

Figure 4. Normalized transient thermal impedance for TO-220FP

Figure 5. Typical output characteristics

Figure 6. Typical transfer characteristics


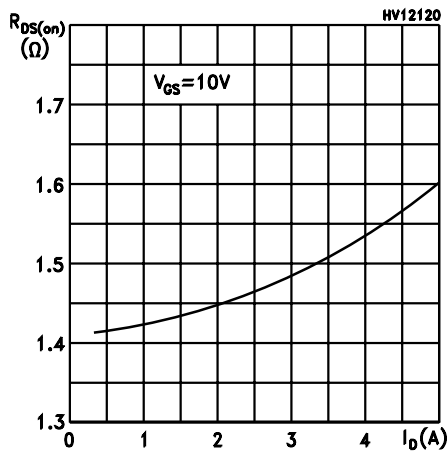
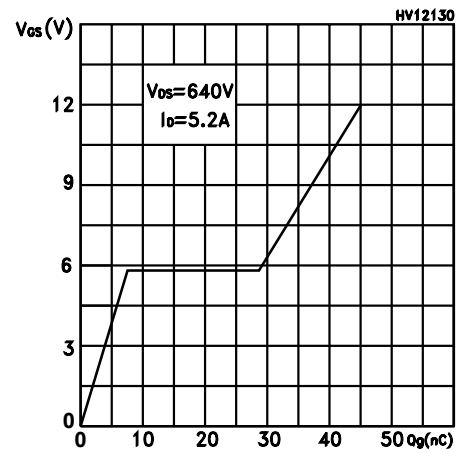
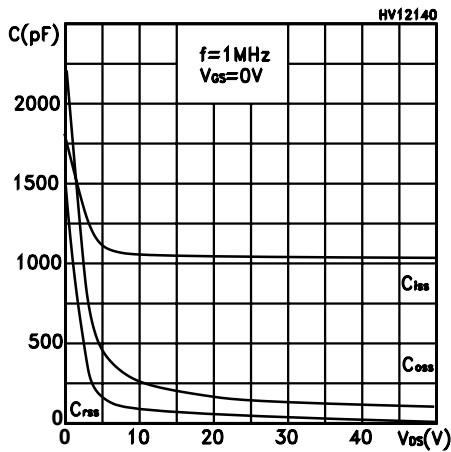
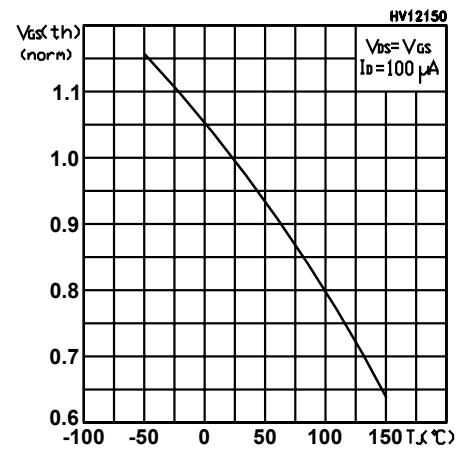
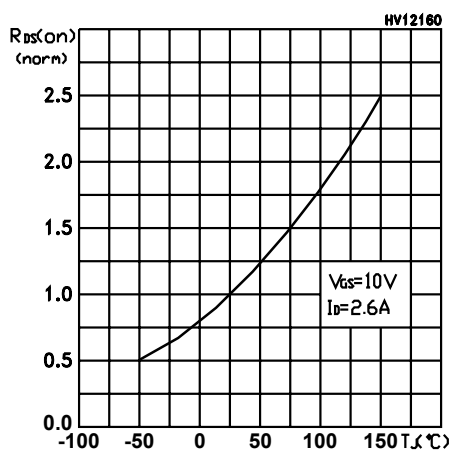
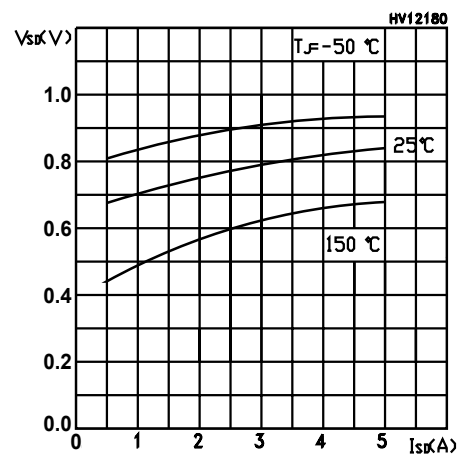
Figure 7. Typical drain-source on-resistance

Figure 8. Typical gate charge characteristics

Figure 9. Typical capacitance characteristics

Figure 10. Normalized gate threshold vs temperature

Figure 11. Normalized on-resistance vs temperature

Figure 12. Typical reverse diode forward characteristics


Figure 13. Normalized breakdown voltage vs temperature

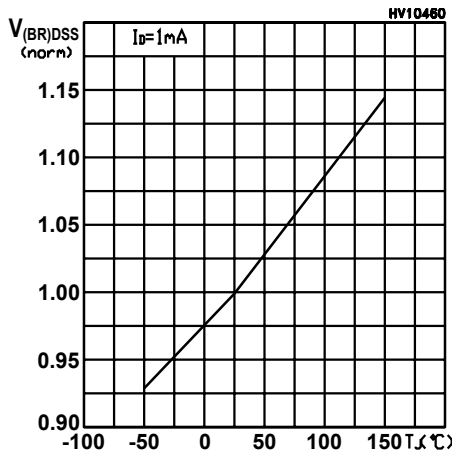
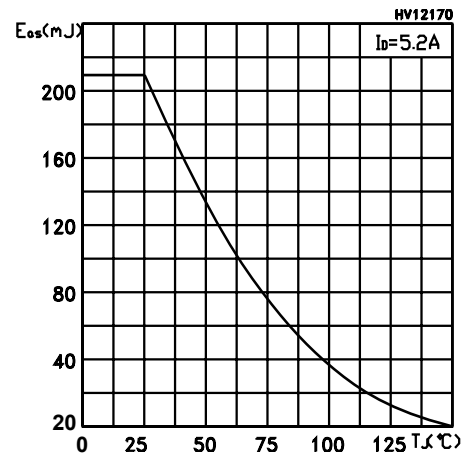
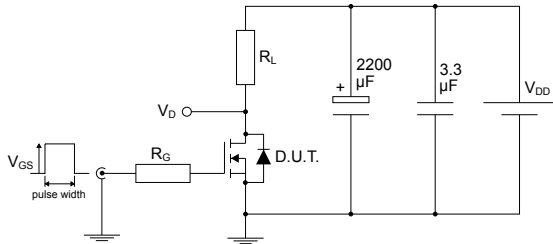


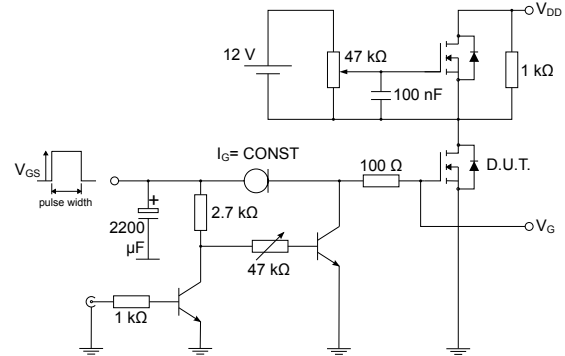
Figure 14. Maximum avalanche energy vs temperature



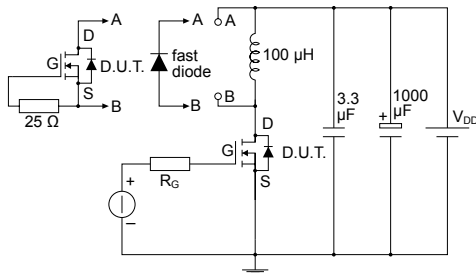
3 Test circuits

Figure 15. Test circuit for resistive load switching times


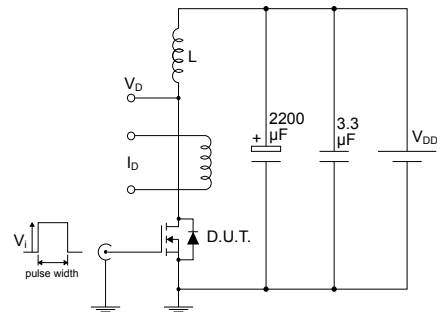
AM01468v1

Figure 16. Test circuit for gate charge behavior


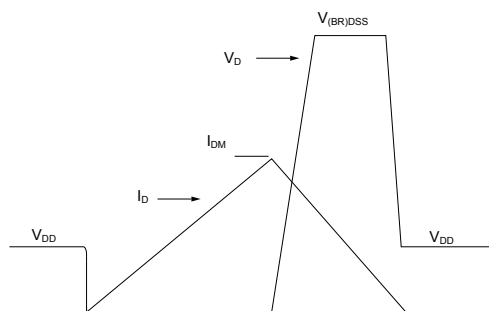
AM01469v1

Figure 17. Test circuit for inductive load switching and diode recovery times


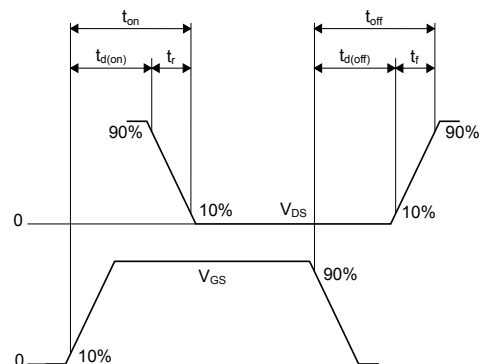
AM01470v1

Figure 18. Unclamped inductive load test circuit


AM01471v1

Figure 19. Unclamped inductive waveform


AM01472v1

Figure 20. Switching time waveform


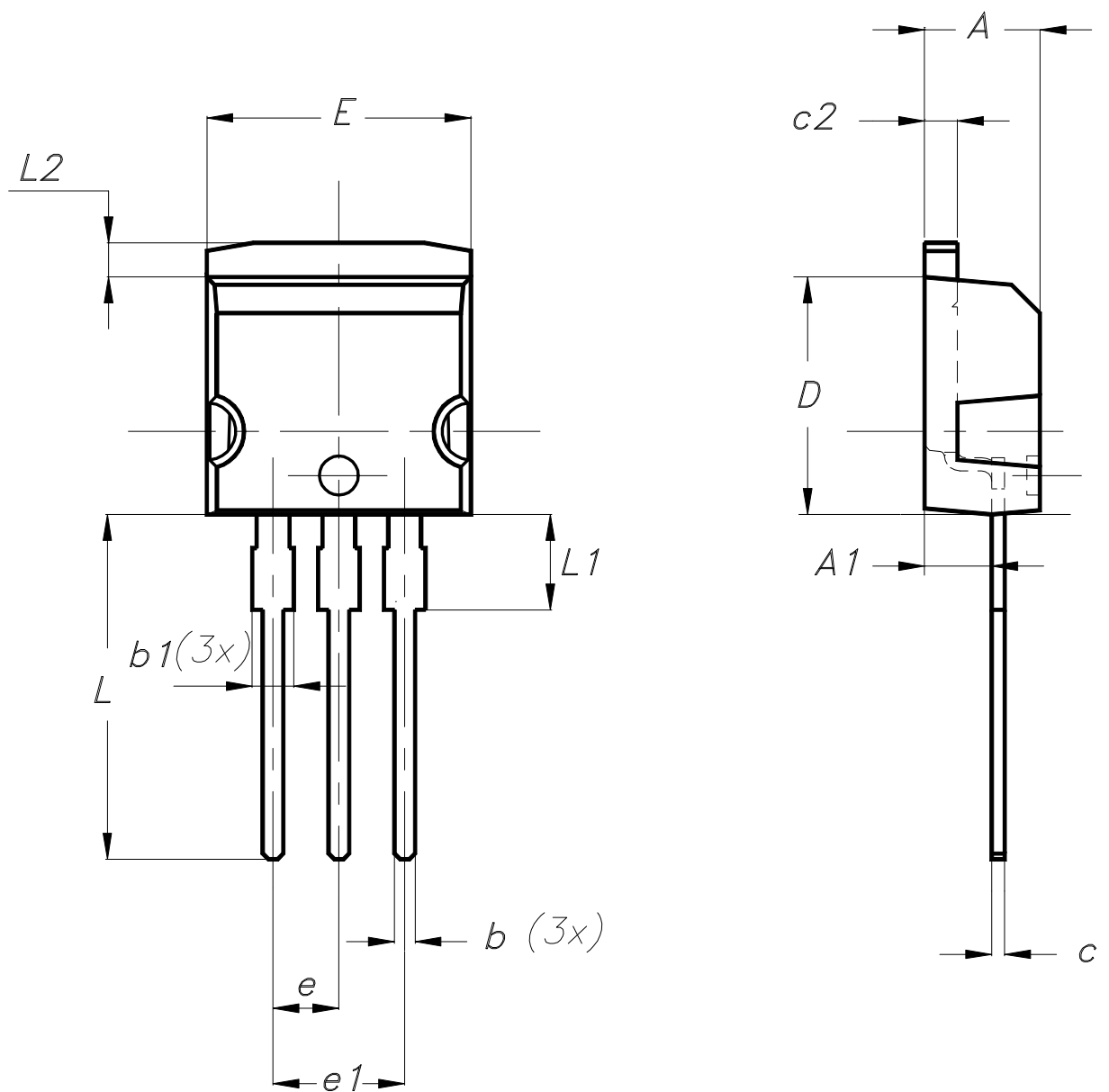
AM01473v1

4 Package information

To meet environmental requirements, ST offers these devices in different grades of **ECOPACK** packages, depending on their level of environmental compliance. ECOPACK specifications, grade definitions, and product status are available at: www.st.com. ECOPACK is an ST trademark.

4.1 I²PAK package information

Figure 21. I²PAK package outline



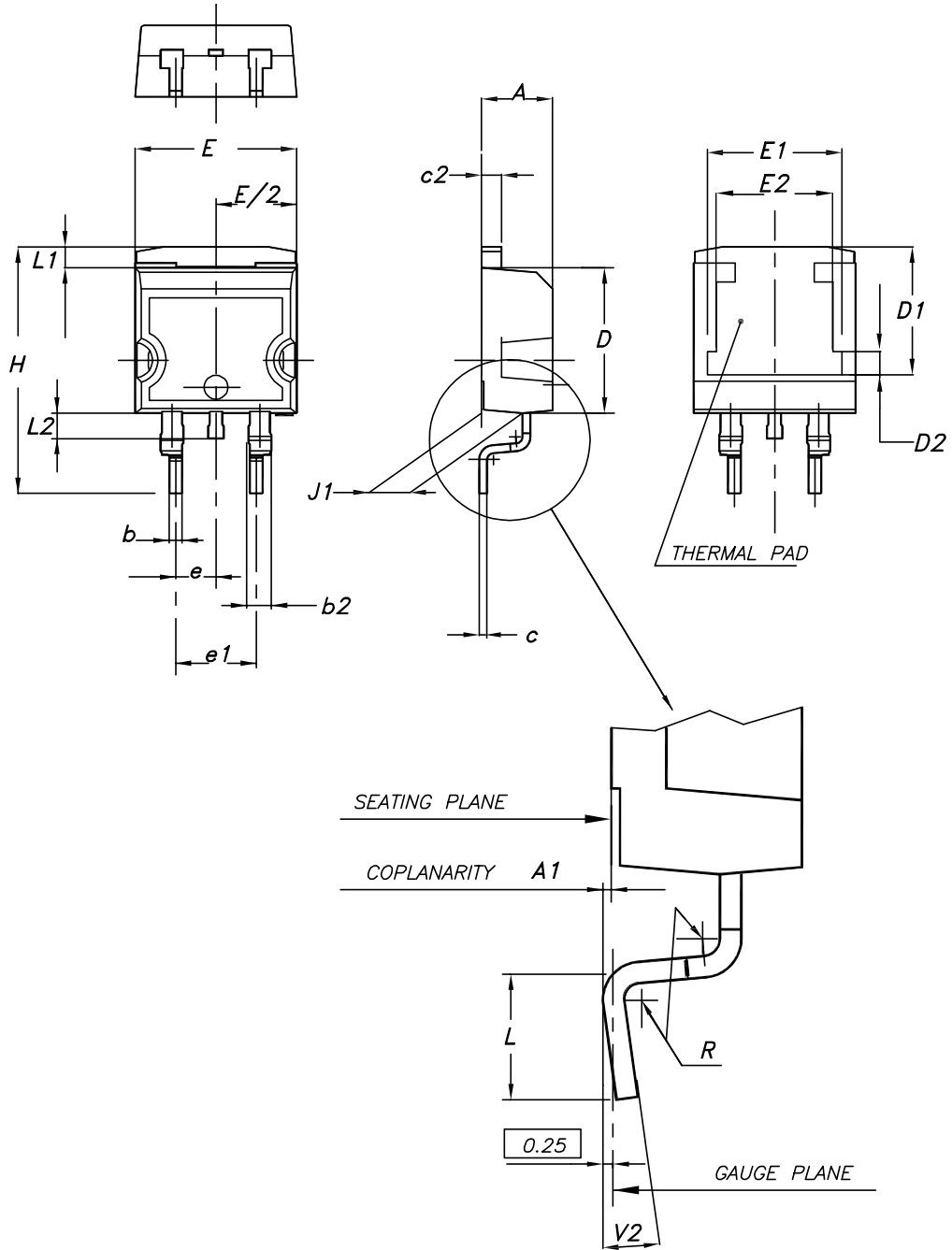
0004982_Rev_10

Table 8. I²PAK package mechanical data

Dim.	mm	
	Min.	Max.
A	4.40	4.60
A1	2.40	2.72
b	0.61	0.88
b1	1.14	1.70
c	0.49	0.70
c2	1.23	1.32
D	8.95	9.35
e	2.40	2.70
e1	4.95	5.15
E	10.00	10.40
L	13.00	14.00
L1	3.50	3.93
L2	1.27	1.40

4.2 D²PAK (TO-263) type A package information

Figure 22. D²PAK (TO-263) type A package outline



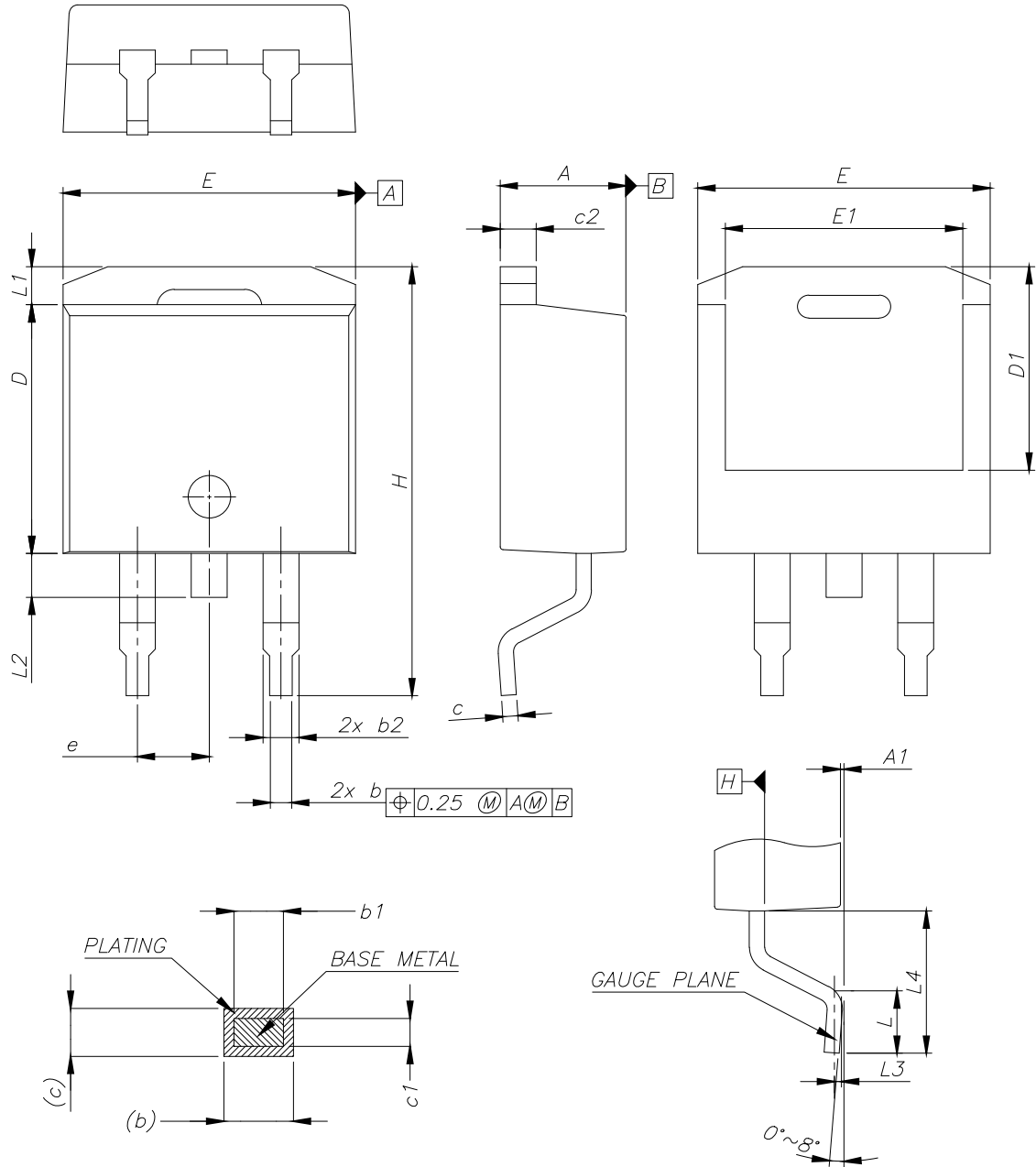
0079457_27

Table 9. D²PAK (TO-263) type A package mechanical data

Dim.	mm		
	Min.	Typ.	Max.
A	4.40		4.60
A1	0.03		0.23
b	0.70		0.93
b2	1.14		1.70
c	0.45		0.60
c2	1.23		1.36
D	8.95		9.35
D1	7.50	7.75	8.00
D2	1.10	1.30	1.50
E	10.00		10.40
E1	8.30	8.50	8.70
E2	6.85	7.05	7.25
e		2.54	
e1	4.88		5.28
H	15.00		15.85
J1	2.49		2.69
L	2.29		2.79
L1	1.27		1.40
L2	1.30		1.75
R		0.40	
V2	0°		8°

4.3 D²PAK (TO-263) type B package information

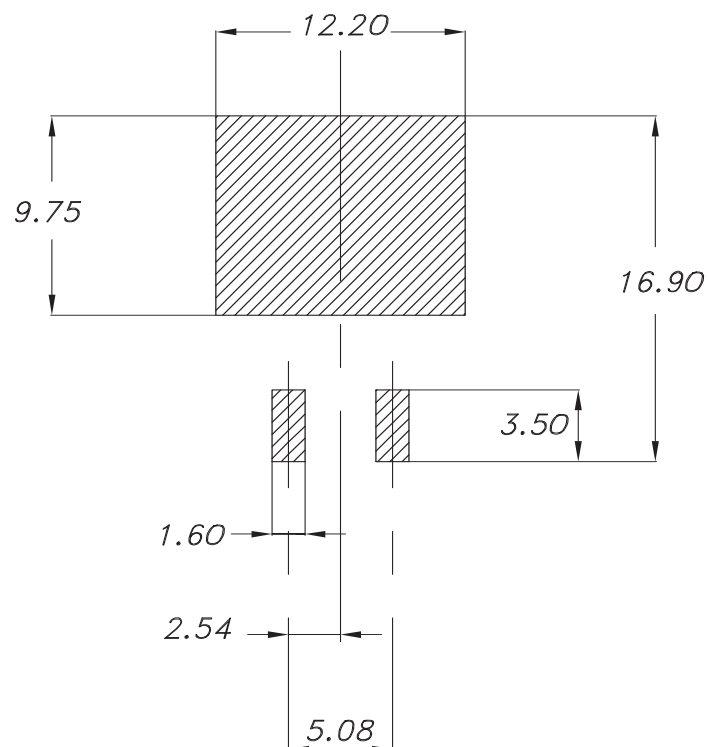
Figure 23. D²PAK (TO-263) type B package outline



0079457_27_B

Table 10. D²PAK (TO-263) type B mechanical data

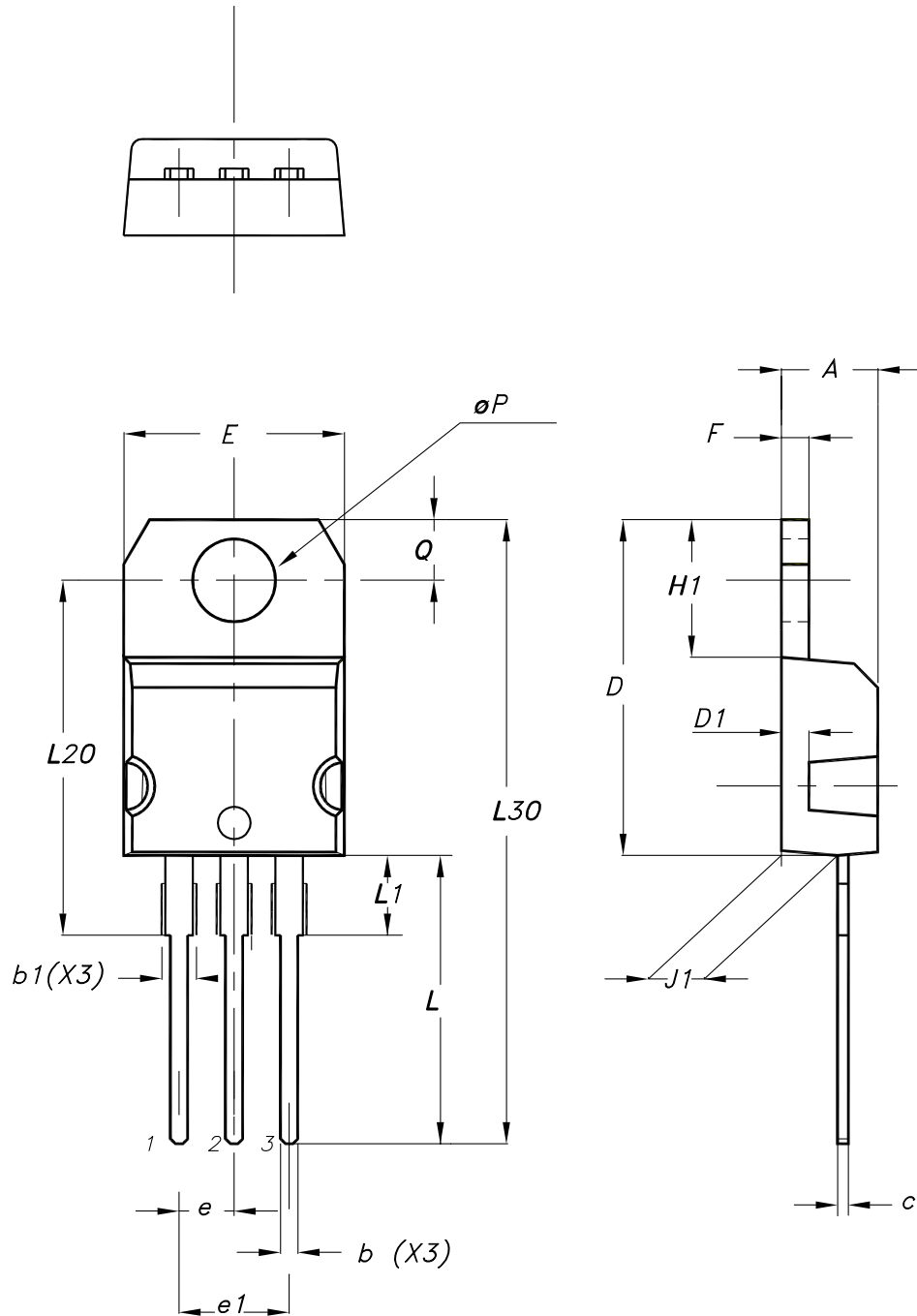
Dim.	mm		
	Min.	Typ.	Max.
A	4.36		4.56
A1	0.00		0.25
b	0.70		0.90
b1	0.51		0.89
b2	1.17		1.37
c	0.38		0.694
c1	0.38		0.534
c2	1.19		1.34
D	8.60		9.00
D1	6.90		7.50
E	10.15		10.55
E1	8.10		8.70
e	2.54 BSC		
H	15.00		15.60
L	1.90		2.50
L1			1.65
L2			1.78
L3		0.25	
L4	4.78		5.28

Figure 24. D²PAK (TO-263) recommended footprint (dimensions are in mm)


0079457_Rev27_footprint

4.4 TO-220 type A package information

Figure 25. TO-220 type A package outline



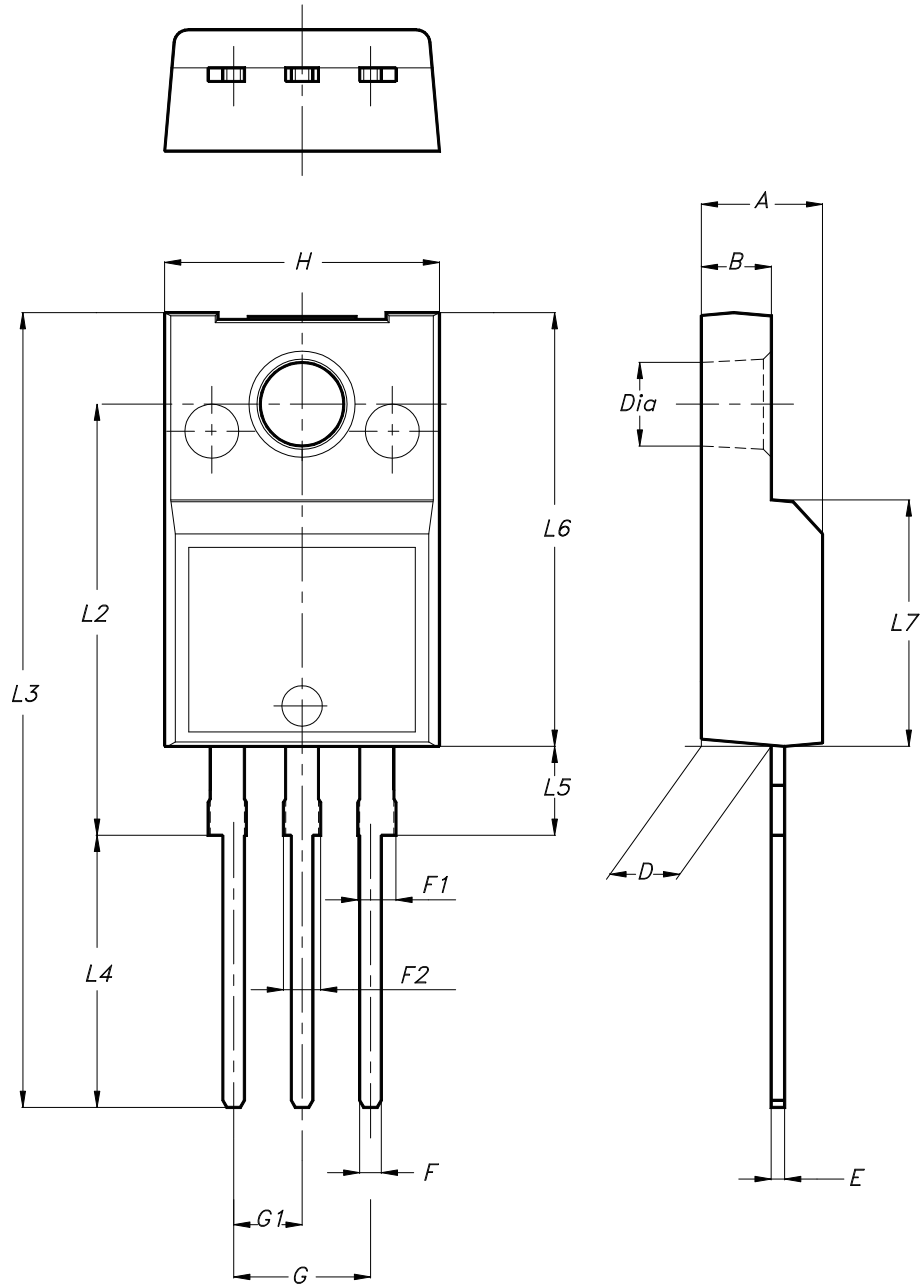
0015988_typeA_Rev_24

Table 11. TO-220 type A package mechanical data

Dim.	mm		
	Min.	Typ.	Max.
A	4.40		4.60
b	0.61		0.88
b1	1.14		1.55
c	0.48		0.70
D	15.25		15.75
D1		1.27	
E	10.00		10.40
e	2.40		2.70
e1	4.95		5.15
F	1.23		1.32
H1	6.20		6.60
J1	2.40		2.72
L	13.00		14.00
L1	3.50		3.93
L20		16.40	
L30		28.90	
øP	3.75		3.85
Q	2.65		2.95
Slug flatness		0.03	0.10

4.5 TO-220FP type B package information

Figure 26. TO-220FP type B package outline



7012510_B_rev.14

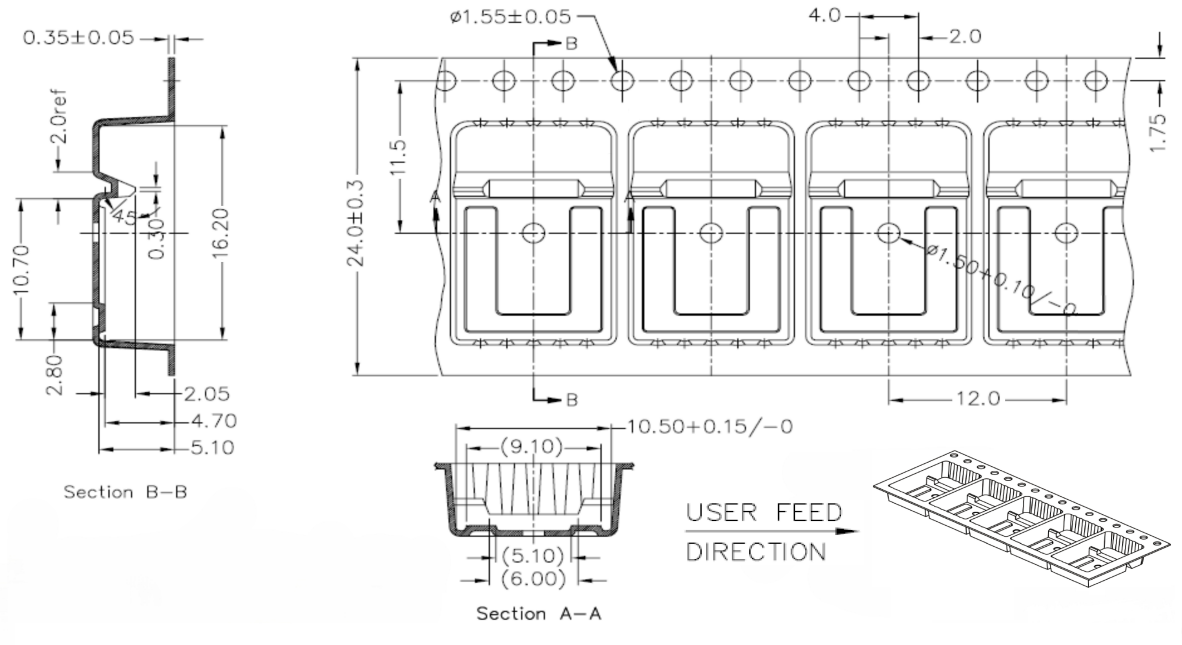


Table 12. TO-220FP type B package mechanical data

Dim.	mm		
	Min.	Typ.	Max.
A	4.40		4.60
B	2.50		2.70
D	2.50		2.75
E	0.45		0.70
F	0.75		1.00
F1	1.15		1.70
F2	1.15		1.70
G	4.95		5.20
G1	2.40		2.70
H	10.00		10.40
L2		16.00	
L3	28.60		30.60
L4	9.80		10.60
L5	2.90		3.60
L6	15.90		16.40
L7	9.00		9.30
Dia	3.00		3.20

4.6 D²PAK packing information

Figure 27. D²PAK tape drawing (dimensions are in mm)



DM01095771_2



5 Ordering information

Table 13. Order codes

Order codes	Marking	Package	Packing
STB7NK80Z-1	B7NK80Z	I ² PAK	Tube
STB7NK80ZT4	B7NK80Z	D ² PAK	Tape and reel
STP7NK80Z	P7NK80Z	TO-220	Tube
STP7NK80ZFP	P7NK80ZFP	TO-220FP	



Revision history

Table 14. Document revision history

Date	Revision	Changes
09-Sep-2004	3	Complete version.
16-Aug-2006	4	New template, no content change.
09-Oct-2006	5	Corrected order code.
28-Mar-2010	6	Corrected <i>Table 1: Device summary</i> .
26-Mar-2026	7	Updated Section 4: Package information . Minor text changes.



Contents

1	Electrical ratings	2
2	Electrical characteristics	3
2.1	Electrical characteristics (curves)	5
3	Test circuits	8
4	Package information	9
4.1	I ² PAK package information	9
4.2	D ² PAK (TO-263) type A package information	11
4.3	D ² PAK (TO-263) type B package information	13
4.4	TO-220 type A package information	15
4.5	TO-220FP type B package information	17
4.6	D ² PAK packing information	19
5	Ordering information	20
	Revision history	21



IMPORTANT NOTICE – READ CAREFULLY

STMicroelectronics NV and its subsidiaries (“ST”) reserve the right to make changes, corrections, enhancements, modifications, and improvements to ST products and/or to this document at any time without notice.

In the event of any conflict between the provisions of this document and the provisions of any contractual arrangement in force between the purchasers and ST, the provisions of such contractual arrangement shall prevail.

The purchasers should obtain the latest relevant information on ST products before placing orders. ST products are sold pursuant to ST’s terms and conditions of sale in place at the time of order acknowledgment.

The purchasers are solely responsible for the choice, selection, and use of ST products and ST assumes no liability for application assistance or the design of the purchasers’ products.

No license, express or implied, to any intellectual property right is granted by ST herein.

Resale of ST products with provisions different from the information set forth herein shall void any warranty granted by ST for such product.

If the purchasers identify an ST product that meets their functional and performance requirements but that is not designated for the purchasers’ market segment, the purchasers shall contact ST for more information.

ST and the ST logo are trademarks of ST. For additional information about ST trademarks, refer to www.st.com/trademarks. All other product or service names are the property of their respective owners.

Information in this document supersedes and replaces information previously supplied in any prior versions of this document.

© 2026 STMicroelectronics – All rights reserved