

4

3

2

1

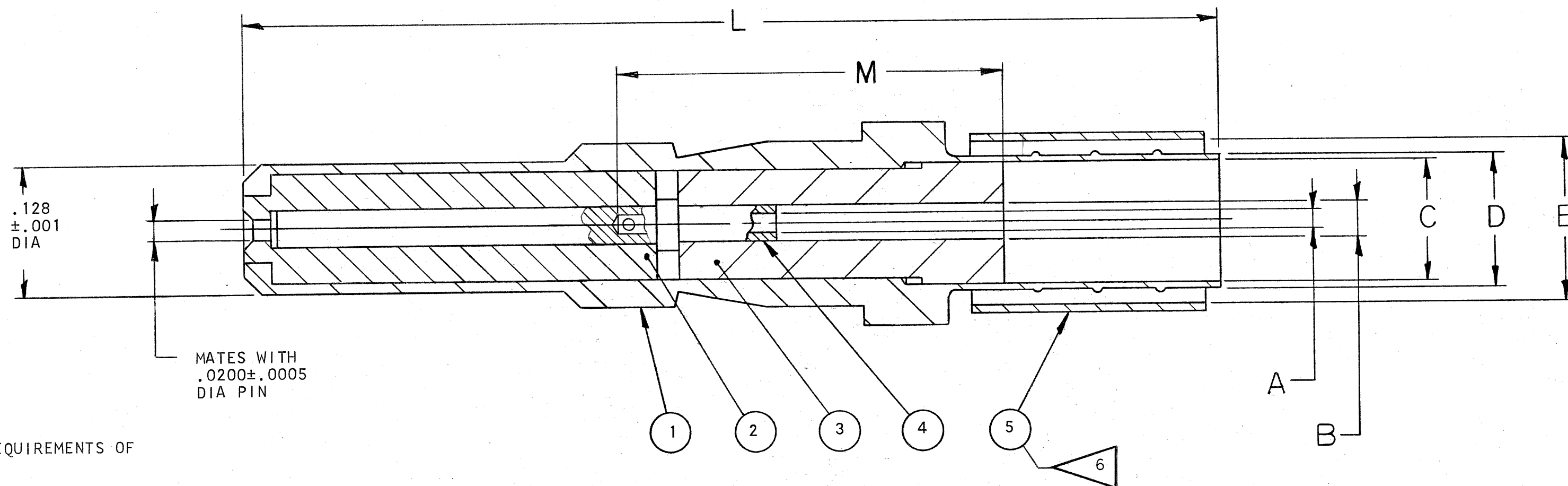
ER 5060-175

53536-146

REVISIONS

ZONE	LTR	DESCRIPTION	DATE	APPROVED
A1				
A2		WAS .034 (B DIA COL); ADDED M DIM. ECN: CNR	8-7-72 HEMMER	<i>R. Hann</i>
A3		WAS D DIA $\pm .001$ (COL) ECN: 56525-216	4-22-75 HEMMER	<i>R. Hann</i>
B		(MFG) ADDED RG-195A/U, RG180B/U (FOR USE WITH CABLE COL), NOTE 7, J FINISH (NOTE 1) ECN: 58118-88	1-12-78 EDWARDS	<i>J. Edwards</i>

ASSEMBLY NUMBER	COAXIAL CONTACT SIZE	FOR USE WITH CABLE	USE CRIMP TOOL	CRIMP TOOL LOCATOR	OUTER CONTACT	CONTACT SOCKET	FRONT INSULATOR	REAR INSULATOR	FERRULE	A DIA $\pm .0020$ $-.0005$	B DIA $\pm .002$ $-.000$	C DIA $\pm .001$	D DIA $\pm .002$ $-.001$	E DIA $\pm .001$	L REF	M $\pm .014$
21-33106-40()	12	RAYCHEM 9527E1118 RG-195A/U RG-180B/U	GS-200	G2P330	21-492 -40()	21-4 57-2 ()	21-1305-53	21-1369-1	21-33901-1()	.0225	.035	.119	.134	.162	.899	.401



- 21-33106-40F MEETS THE REQUIREMENTS OF RAYTHEON DRAWING 848204.
- WHEN ASSEMBLING THIS CONTACT TO SPECIFIED CABLE, CRIMP INDICATED FERRULE WITH DANIELS MANUFACTURING CORP CRIMP TOOL. SEE CHART FOR TOOL AND LOCATOR NUMBER.
- FOR COMPONENT PART NUMBERS, QUANTITIES AND RELEASE STATUS OF DESIRED UNIT, SEE SEPARATE PARTS LIST.
- CONTACT ASSEMBLY WILL ACCOMMODATE OTHER EQUIVALENT COAXIAL CABLES.
- DRAWING ILLUSTRATES FINAL ASSEMBLY. PACKAGE PER PRODUCTION PROCESS SHEET.
- LAST SUFFIX CHARACTER SAME AS FOR ASSEMBLY PER NOTE 1.
- ADD LAST SUFFIX CHARACTER FOR FINISH.

SUFFIX LAST
CHARACTER

FINISH

- | | |
|---|-------------------------------------------------------|
| 1 | .00020 MIN SILVER |
| 2 | .00005 MIN GOLD, (KNOOP HARDNESS 130-200) OVER SILVER |
| 3 | .00010 MIN GOLD, (KNOOP HARDNESS 130-200) OVER SILVER |
| 4 | .00010 MIN GOLD, (KNOOP HARDNESS 130-200) OVER COPPER |
| 5 | .00005 MIN GOLD, (KNOOP HARDNESS 130-200) OVER NICKEL |
| E | .00005 MIN GOLD, (KNOOP HARDNESS 90 MAX) OVER COPPER |
| F | .00005 MIN GOLD, (KNOOP HARDNESS 130-200) OVER COPPER |
| H | .00010 MIN GOLD, (KNOOP HARDNESS 130-200) OVER COPPER |
| J | .00003 MIN GOLD, (KNOOP HARDNESS 130-200) OVER NICKEL |

NOTES:

USE OF THIS DOCUMENT IS UNLIMITED. DOCUMENTS REFERENCED HEREON CONTAIN LIMITED RIGHTS DATA.

NEXT ASSEMBLY

5	1		SEE COLUMN	FERRULE	
4	1			CONTACT, SOCKET	
3	1			REAR INSULATOR	
2	1			FRONT INSULATOR	
1	1			CONTACT, OUTER	
FIND NO.	QTY REQD	CODE IDENT	PART NUMBER	DESCRIPTION	NOTE REF
PARTS LIST					
UNLESS OTHERWISE SPECIFIED LINEAR DIMENSIONS ARE IN INCHES. TOLERANCES: .XXX \pm .010, .XX \pm .03, .X \pm .1, ANGLES \pm 2°. OTHER STANDARDS PER 9-3800 AND MIL-D-1000. NOTE REF			SIGNATURES PREPARED <i>A. Hann</i> CHECKED <i>B. Toney</i> MATERIAL APPROVED <i>Hemmer</i> APPROVED <i>R. Hann</i>	DATES 2-12-72 8-7-72 6-12-72 8-7-72	The Bendix Corporation Electrical Components Division Sidney, New York
MATERIAL SPEC			PROCESS SPEC		
TITLE: CONTACT, PIN, COAXIAL, ELECTRICAL CONNECTOR, TYPE PT-SE, CRIMP					
SIZE C		CODE IDENT NO. 77820		21-33106-()	
SCALE NONE		SEE PARTS LIST		REF 21-33012	
				SHEET	

TAB.