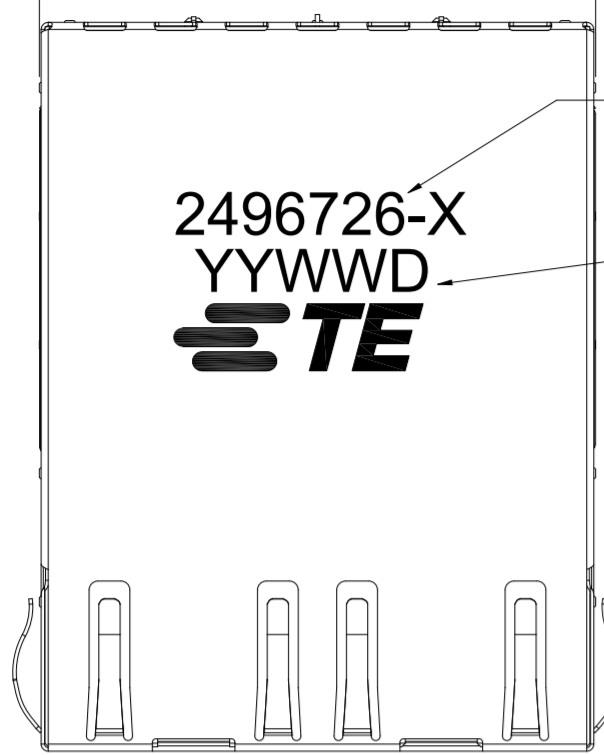


P	LTR	DESCRIPTION	DATE	DWN	APVD
A		REVISED PER ECN-25-302719	22JAN2025	TR	RCG

31.38±0.38 [1.235±.015]Ref.



Marking

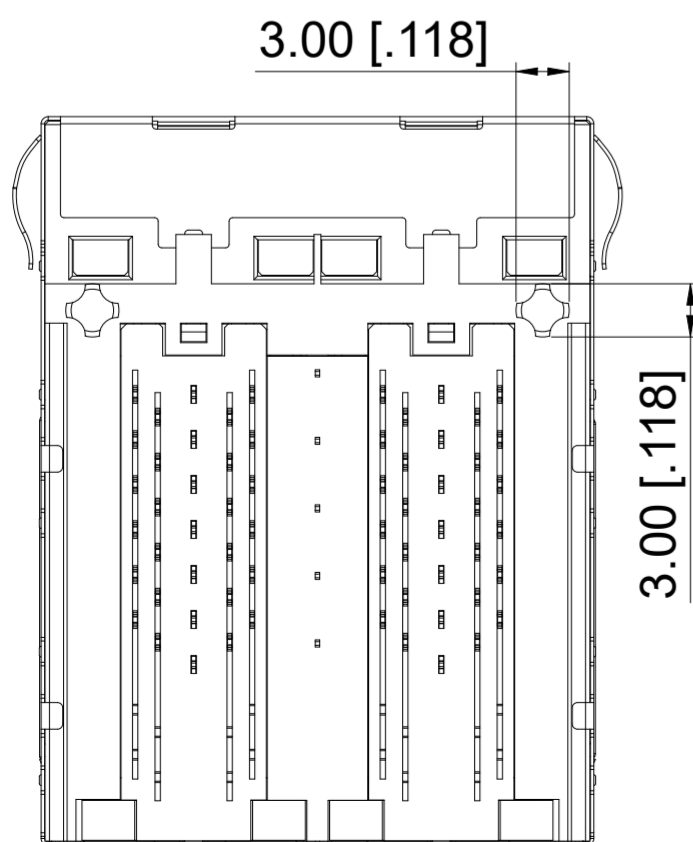
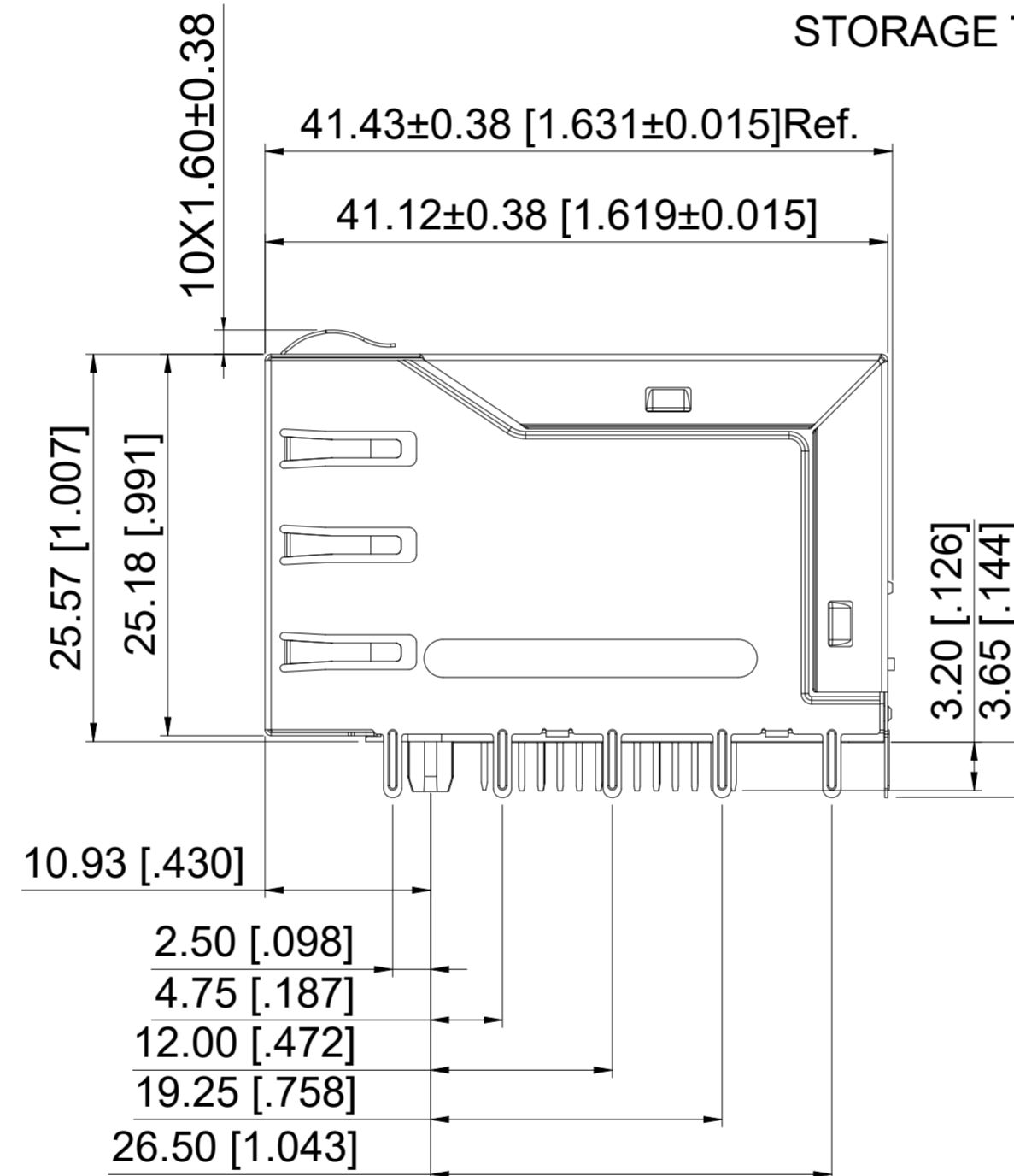
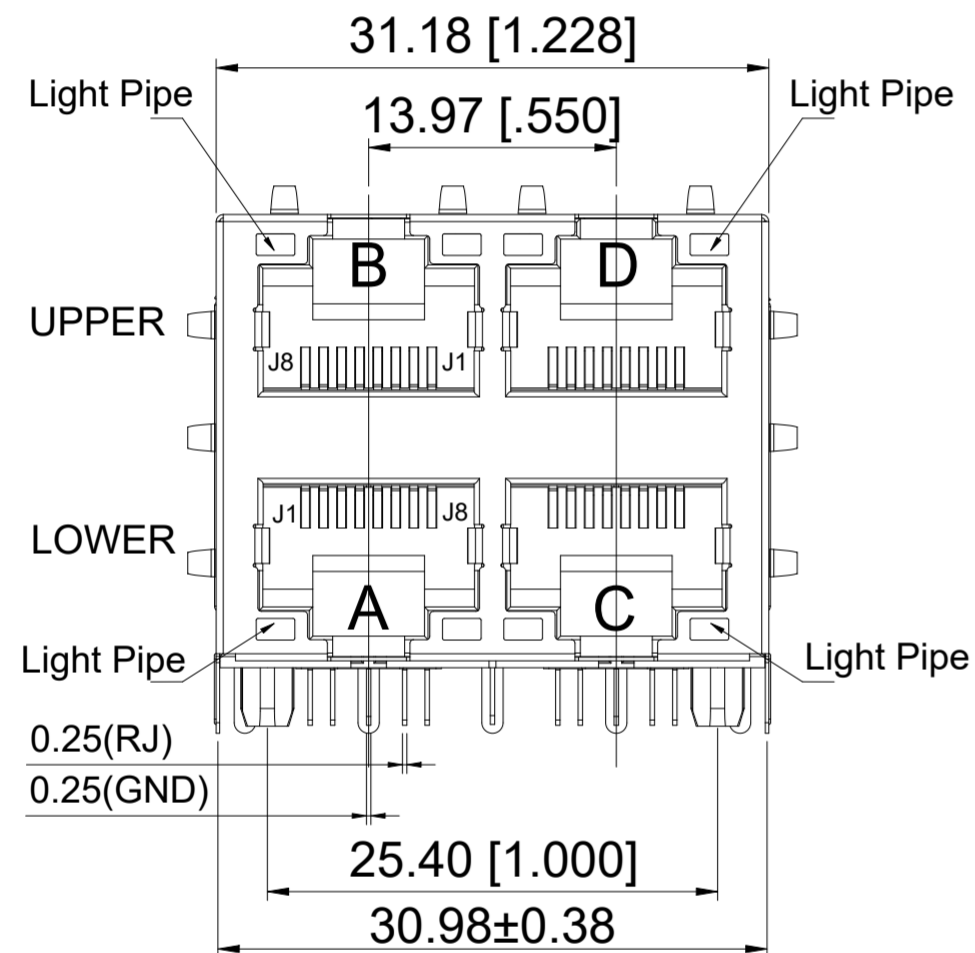
2496726-X
YYWWD
TE

Note:

X= 1,2,3,4,5,6
YYWWD
YY=YEAR
WW=WEEK
D=1 for Sunday - 7 for Saturday

NOTE :

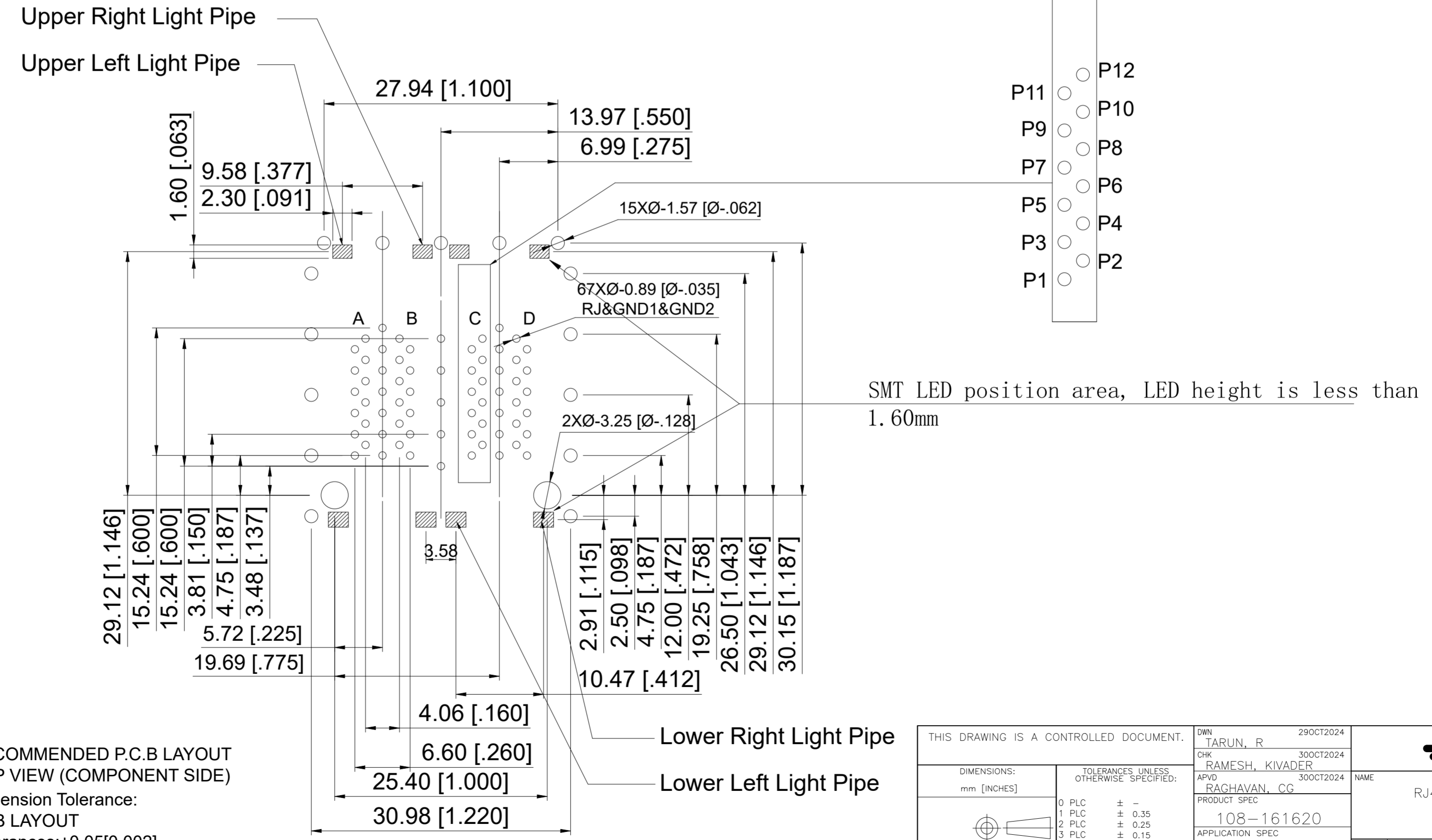
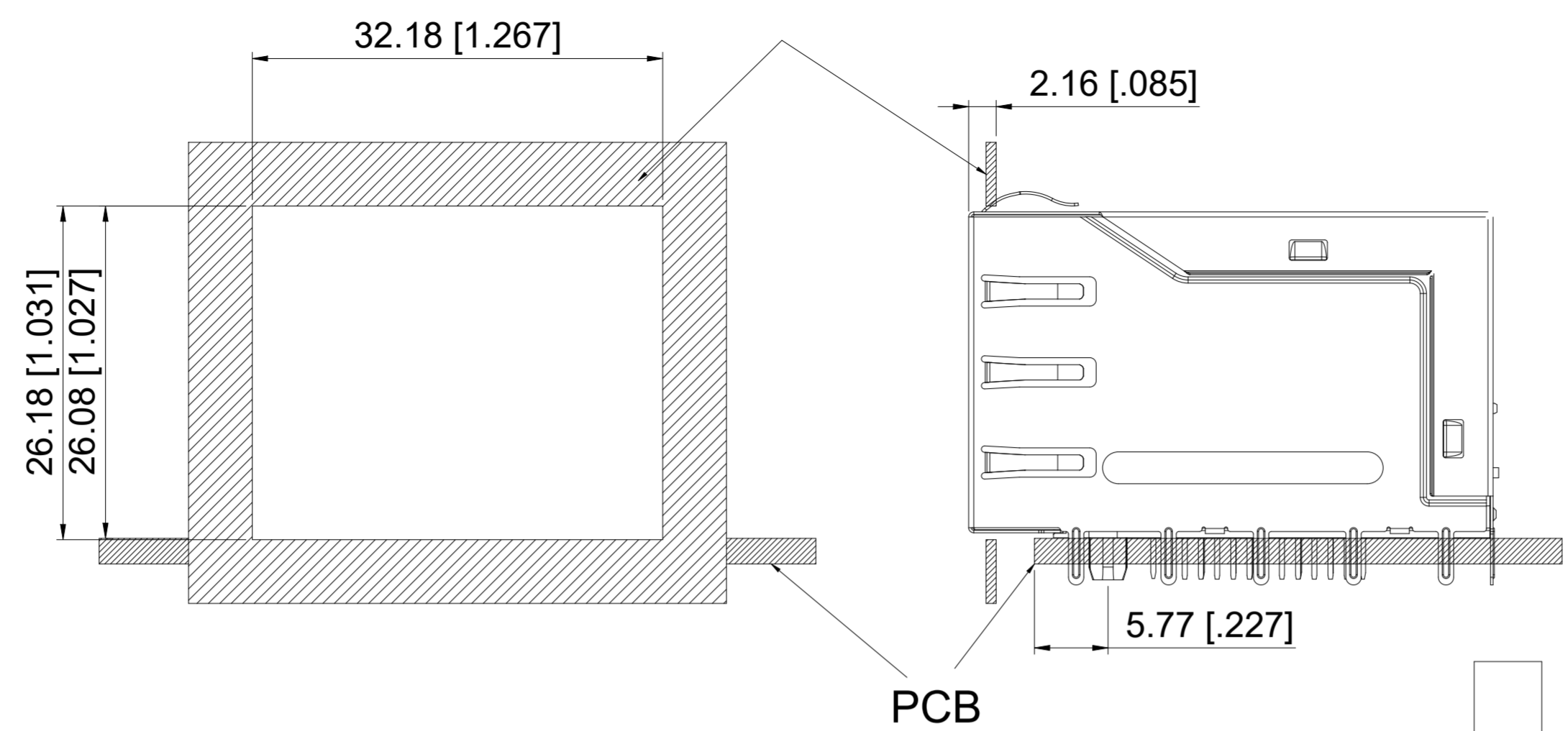
- 1.HOUSING:GLASS FILLED PA6T(BLACK) UL94V-0(ROHS)
- 2.CONTACT: PHOSPHOR BRONZE,50 MICROINCHES MIN. OVERALL DUCTILE NICKEL UNDERPLATE WITH (REFER PART NUMBER TABLE) GOLD AT MATING INTERFACE
- 3.SHIELD:0.2mm THICKNESS WITH BRASS.
- 4.JACK CAVITY CONFORMS TO FCC RULES AND REGULATIONS PART 68 SUBPART F
- 5.THE PART IS RECOMMENDED FOR WAVE SOLDERING PROCESS PEAK SOLDERING TEMPERATURE IS 260°C MAX,10 SECS MAX.
- 6.OPERATING TEMPERATURE:-40°C TO +85°C.
STORAGE TEMPERATURE:-40°C TO +85°C.



GF	2496726-6
0.0762 μm [3μ"]	2496726-5
0.1524 μm [6μ"]	2496726-4
0.381 μm [15μ"]	2496726-3
0.762 μm [30μ"]	2496726-2
1.27 μm [50μ"]	2496726-1
GOLD PLATING THICKNESS	PART NUMBER

THIS DRAWING IS A CONTROLLED DOCUMENT.		DWN	TARUN, R	29OCT2024	TE Connectivity							
DIMENSIONS: mm [INCHES]		CHK	RAMESH, KIVADER	30OCT2024								
TOLERANCES UNLESS OTHERWISE SPECIFIED:		APVD	RAGHAVAN, CG	30OCT2024								
0 PLC ± - 1 PLC ± 0.35 2 PLC ± 0.25 3 PLC ± 0.15 4 PLC ± - ANGLES ± 2°		PRODUCT SPEC	108-161620	NAME		RJ45 W/MAGNET 2X2 5G LIGHT PIPE						
MATERIAL	FINISH	WEIGHT	114-161217	APPLICATION SPEC	SIZE	A2	CAGE CODE	00779	DRAWING NO	C=2496726	RESTRICTED TO	-
CUSTOMER DRAWING		SCALE	1:1	SHEET	1 OF 3	REV	A					

REVISIONS					
P	LTR	DESCRIPTION	DATE	DWN	APVD
-	-	SEE SHEET 1	-	-	-

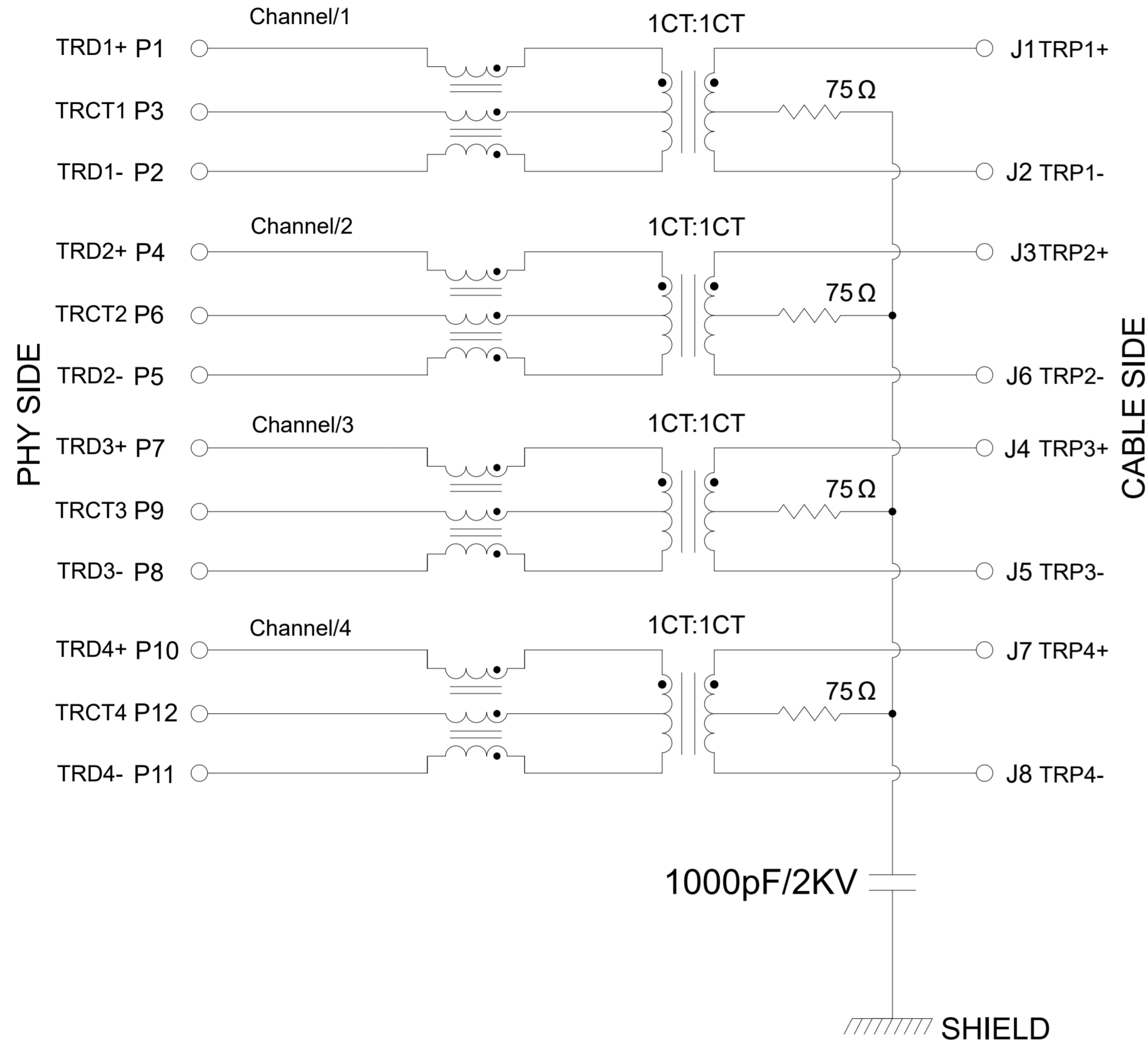


RECOMMENDED P.C.B LAYOUT
 TOP VIEW (COMPONENT SIDE)
 Dimension Tolerance:
 PCB LAYOUT
 Tolerances:±0.05[0.002]

THIS DRAWING IS A CONTROLLED DOCUMENT.		DWN TARUN, R 29OCT2024	TE Connectivity	
DIMENSIONS: mm [INCHES]		CHK RAMESH, KIVADER 30OCT2024		
TOLERANCES UNLESS OTHERWISE SPECIFIED:		APVD RAGHAVAN, CG 30OCT2024	NAME RJ45 W/MAGNET 2X2 5G LIGHT PIPE	
0 PLC ± - 1 PLC ± 0.35 2 PLC ± 0.25 3 PLC ± 0.15 4 PLC ± - ANGLES ± 2°		PRODUCT SPEC 108-161620	RESTRICTED TO	
MATERIAL		FINISH	APPLICATION SPEC 114-161217	SIZE A2
			WEIGHT	CAGE CODE 00779
			CUSTOMER DRAWING	DRAWING NO C=2496726
			SCALE 1:1	SHEET 2 of 3
				REV A

REVISIONS					
P	LTR	DESCRIPTION	DATE	DWN	APVD
-	-	SEE SHEET 1	-	-	-

Schematic



PARAMETER	SPECIFICATIONS
OPERATING TEMPERATURE	-40°C To +85°C
TURNS RATIO	1:1±2%
OPEN CIRCUIT INDUCTANCE(OCL)	120uH MIN@100KHz/100mV With 8mA DC Bias For(CHANNEL1,2,3,4)
INSERTION LOSS(IL)	-0.5dB MAX@1MHz-50MHz; -1.0dB MAX@50MHz-125MHz; -2.0dB MAX@125MHz-200MHz; -2.5dB MAX@200MHz-250MHz;
RETURN LOSS(RL) (Z out=100 OHM)	-20dB MIN@1MHz-50MHz; -20+15LOG(f/40MHz)dB MIN@50MHz-250MHz;
CROSSTALK (ADJACENT CHANNELS)	-25dB MIN@1MHz-125MHz; -20dB MIN@125MHz-250MHz;
COMMON MODE REJECTION RATIO(CMRR)	-20dB MIN@1MHz-250MHz;
COMMON TO DIFFERENTIAL MODE REJECTION(REF)	-20dB MIN@1MHz-250MHz;
HI-POT	2250 VDC@60 SECONDS

THIS DRAWING IS A CONTROLLED DOCUMENT.		DWN TARUN, R 29OCT2024		
DIMENSIONS: mm [INCHES]		CHK RAMESH, KIVADER 30OCT2024		
TOLERANCES UNLESS OTHERWISE SPECIFIED:		APVD RAGHAVAN, CG 30OCT2024	NAME RJ45 W/MAGNET 2X2 5G LIGHT PIPE	
0 PLC ± - 1 PLC ± 0.35 2 PLC ± 0.25 3 PLC ± 0.15 4 PLC ± - ANGLES ± 2°		PRODUCT SPEC 108-161620	RESTRICTED TO	
MATERIAL		APPLICATION SPEC 114-161217	SIZE A2	CAGE CODE 00779
FINISH		WEIGHT -	DRAWING NO C=2496726	SCALE 1:1
		CUSTOMER DRAWING	SHEET 3 OF 3	REV A