



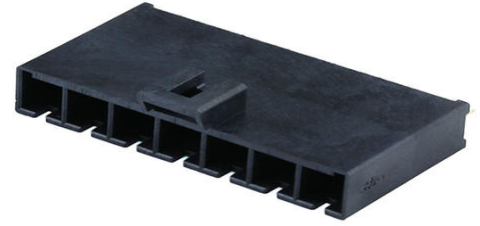
Part Number : [2248620071](#)

Product Description : Mega-Fit Test Plug, Single Row, 7 Circuits

Series Number : 224862

Status : Active

Product Category : PCB Headers and Receptacles



Documents and Resources

Drawings

[2248620071_sd.pdf](#)

[2248621001-PK-000.pdf](#)

3D Models and Design Files

[STEP AP242](#)

[SOLIDWORKS](#)


[Creo](#)

Specifications

[2247441001-PS-000.pdf](#)

Product Environment Compliance

Compliance

| | |
|--------------------|---|
| GADSL/IMDS | Not Relevant |
| China RoHS |  per SJ/T 11365-2006 |
| EU ELV | Not Relevant |
| Low-Halogen Status | Low-Halogen per IEC 61249-2-21 |
| REACH SVHC | Contains Lead per D(2025)7771-DC (04 Feb 2026) |
| EU RoHS | Compliant with Exemption 6(c) per EU 2015/863 |

Compliance Statements

- EU RoHS
- REACH SVHC

- Low-Halogen

Industry Documents

- IPC 1752A Class C
- IPC 1752A Class D
- Molex Product Compliance Declaration
- IEC-62474
- chemSHERPA (xml)

Substances of Interest

- PFAS

EU RoHS Certificate of Compliance

Additional Product Compliance Information

Part Details

General

| | |
|----------------|--|
| Status | Active |
| Category | PCB Headers and Receptacles |
| Series | 224862 |
| Description | Mega-Fit Test Plug, Single Row, 7 Circuits |
| Application | Power, Wire-to-Board |
| Component Type | Test Plug |
| Product Name | Mega-Fit |
| UPC | 198282215615 |

Electrical

| | |
|-------------------------------|---------------|
| Current - Maximum per Contact | 2.5A |
| Voltage - Maximum | 600V AC (RMS) |

Physical

| | |
|--------------------------------|-------|
| Breakaway | No |
| Circuits (Loaded) | 7 |
| Circuits (maximum) | 7 |
| Color - Resin | Black |
| Durability (mating cycles max) | 10000 |
| First Mate / Last Break | No |
| Glow-Wire Capable | Yes |

| | |
|--------------------------------|--------------------------------|
| Lock to Mating Part | Yes |
| Material - Metal | Copper Alloy, Stainless Steel |
| Material - Plating Mating | Gold |
| Material - Plating Termination | Gold |
| Material - Resin | High Temperature Thermoplastic |
| Net Weight | 8.720/g |
| Number of Rows | 1 |
| Orientation | Vertical |
| Packaging Type | Bag |
| PCB Locator | No |
| PCB Retention | No |
| PC Tail Length | 4.40mm |
| Pitch - Mating Interface | 5.70mm |
| Polarized to Mating Part | Yes |
| Polarized to PCB | No |
| Shrouded | Shrouded |
| Stackable | No |
| Temperature Range - Operating | -40° to +105°C |
| Termination Interface Style | Solder or Weld |

Mates With / Use With

Mates with Part(s)

| Description | Part Number |
|--|-------------------------------|
| Mega-Fit Tangless TPA-Capable Single Row Receptacle Housings | <u>200456</u> |

This document was generated on May 06, 2026