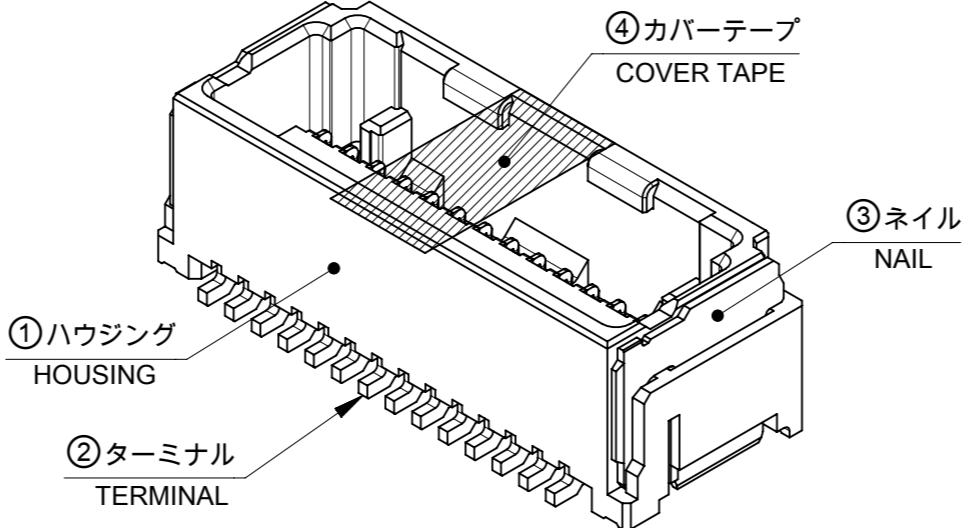


TABLE 1				
番号 NO.	部品 PART	材質 MATERIAL		
①	ハウジング HOUSING	ポリアミド(PA), UL94V-0, 色 : SHEET 5参照 POLY AMIDE(PA), UL94V-0, COLOR : SEE SHEET 5		
②	ターミナル 及び ネイル TERMINAL AND NAIL	黄銅 BRASS 錫ビスマスめっき : 1.0 MICROMETER MINIMUM TIN-BISMUTH PLATING ニッケルめっき (下地) : 1.0 MICROMETER MINIMUM NICKEL (UNDER PLATING)		
④	カバーテープ COVER TAPE	ポリイミド POLYIMIDE		
DOCUMENT STATUS		P1	RELEASE DATE	2025/02/25 06:03:45



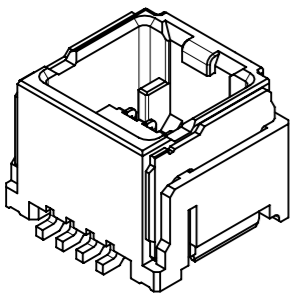
- 注記 :
NOTES :
- 材料及び仕上げ(めっき仕様) : TABLE 1, TABLE2 参照
MATERIAL AND FINISHES (PLATING SPECIFICATION) : SEE TABLE 1, TABLE2.
 - 製品仕様書、コネクタ取扱説明書、適合嵌合相手、適合リテーナーはSHEET 5を
ご参照下さい。
PLEASE REFER TO SHEET 5 FOR PRODUCT SPECIFICATION,
APPLICATION SPECIFICATION, MATE WITH AND APPLICABLE RETAINER.
 - 端子テール部 及び ネイルの平坦度 : 0.12 MAXIMUM
TAIL AND NAIL COPLANARITY TO BE 0.12 MAXIMUM
 - 極数 / 2 = 偶数に適合
APPLY TO CIRCUIT SIZE / 2 = EVEN.
 - 発注番号 : SHEET 5 参照
ORDER NUMBER : PLEASE REFER TO SHEET 5

極数 CIRCUIT SIZE		番号 NO.	ハウジングカラー HOUSING COLOR
505433****	↑↑↑	0	ナチュラル(ベージュ) NATURAL(BEIGE)
		1	黒 BLACK
		2	赤 RED
		4	青 BLUE
		6	緑 GREEN
番号 NO.	カバーテープ COVER TAPE		
7	無 WITHOUT		
8	有 WITH		

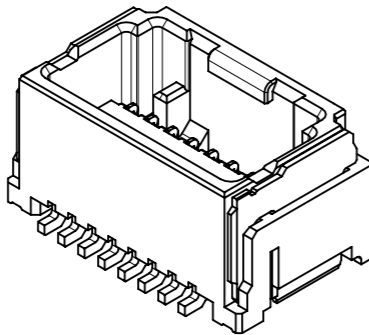
29.4	25	30.85	42
28.15	23.75	29.6	40
26.9	22.5	28.35	38
25.65	21.25	27.1	36
24.4	20	25.85	34
23.15	18.75	24.6	32
21.9	17.5	23.35	30
20.65	16.25	22.1	28
19.4	15	20.85	26
18.15	13.75	19.6	24
16.9	12.5	18.35	22
15.65	11.25	17.1	20
14.4	10	15.85	18
13.15	8.75	14.6	16
11.9	7.5	13.35	14
10.65	6.25	12.1	12
9.4	5	10.85	10
8.15	3.75	9.6	8
C	B	A	極数 CIRCUIT SIZE

THIS DRAWING CONTAINS INFORMATION THAT IS PROPRIETARY TO MOLEX ELECTRONIC TECHNOLOGIES, LLC AND SHOULD NOT BE USED WITHOUT WRITTEN PERMISSION													
DIMENSION UNITS mm		SCALE NTS		CURRENT REV DESC: REMOVED OBSOLETE PART NUMBERS AS PER PCN#515932.									
GENERAL TOLERANCES (UNLESS SPECIFIED)				EC NO: 812554 DRWN: RAVINR1 CHK'D: GGA APPR: GGA INITIAL REVISION: DRWN: TAKAIKE APPR: TKANEKO									
ANGULAR TOL ± 3.0 °													
4 PLACES ± 0.2													
3 PLACES ± 0.2													
2 PLACES ± 0.2													
1 PLACE ± 0.2				2025/01/20									
0 PLACES ± 0.2				2025/02/25									
DRAFT WHERE APPLICABLE MUST REMAIN WITHIN DIMENSIONS				2016/12/26									
				2016/12/28									
THIRD ANGLE PROJECTION		DRAWING		SERIES		DOCUMENT NUMBER							
		A3-SIZE		505433		5054330000							
						PSD							
						000							
						E1							
						1 OF 5							

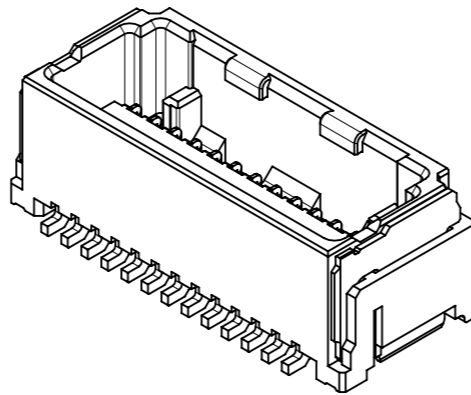
製品形状
PRODUCT SHAPE



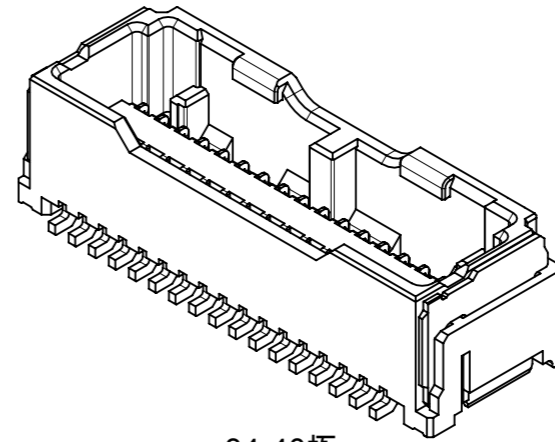
8-14極
8-14 CIRCUIT



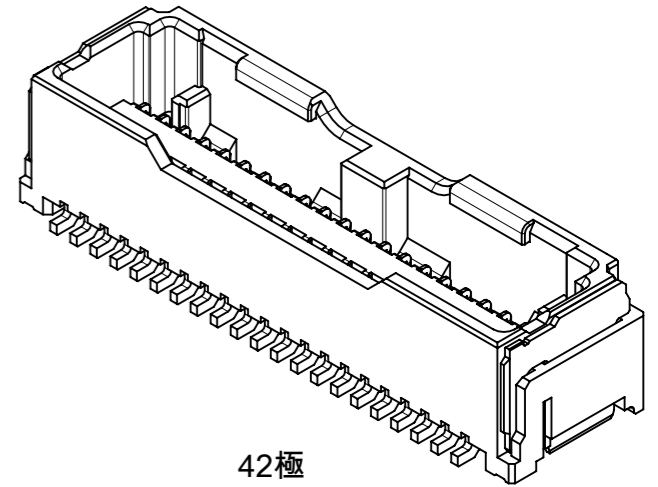
16-24極
16-24 CIRCUIT



26-32極
26-32 CIRCUIT

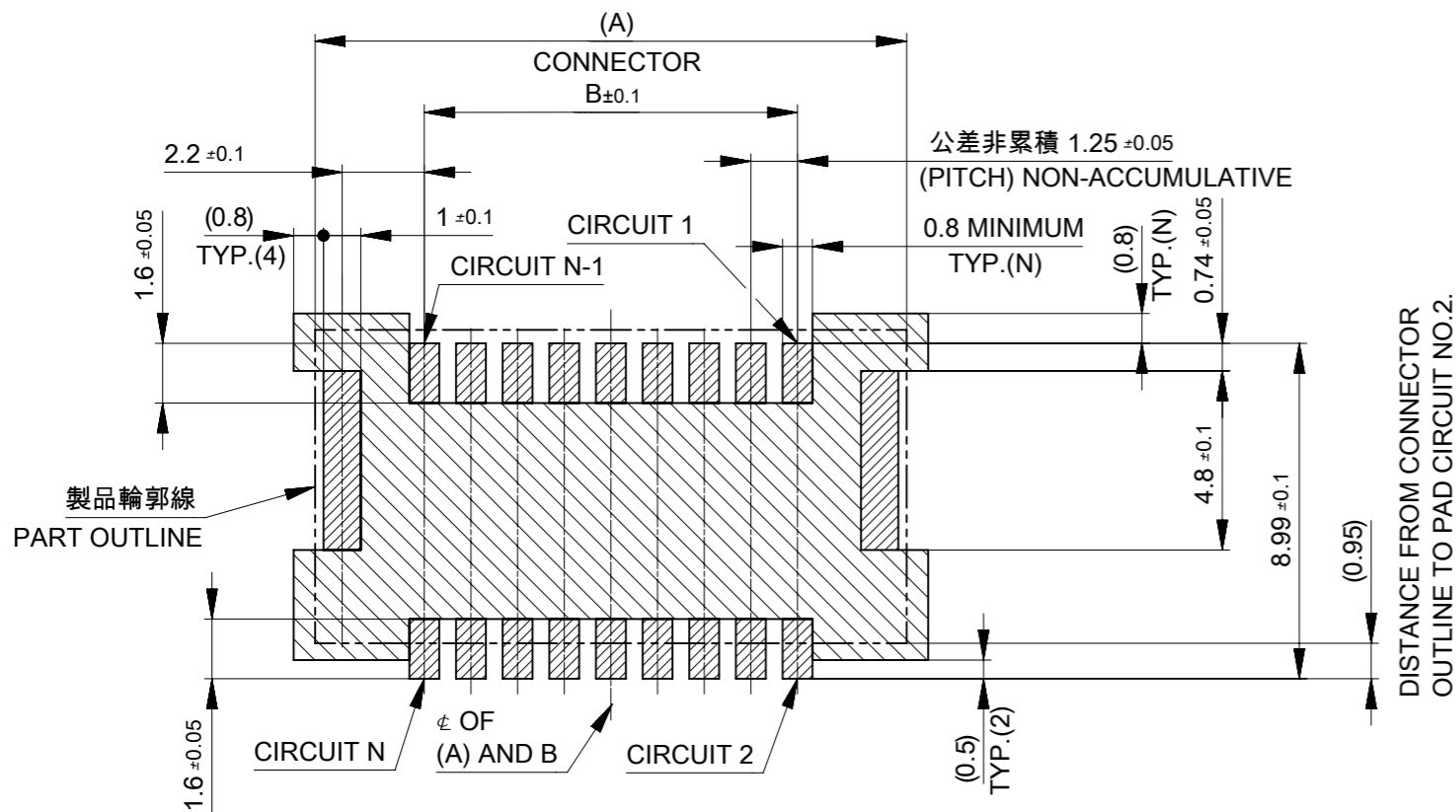


34-40極
34-40 CIRCUIT



42極
42 CIRCUIT

基板パターンレイアウト
PCB PATTERN LAYOUT



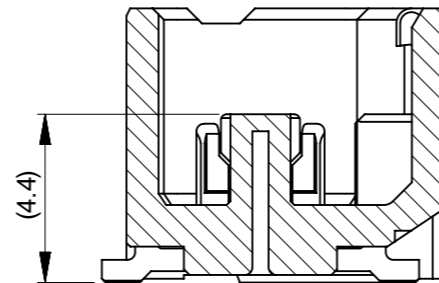
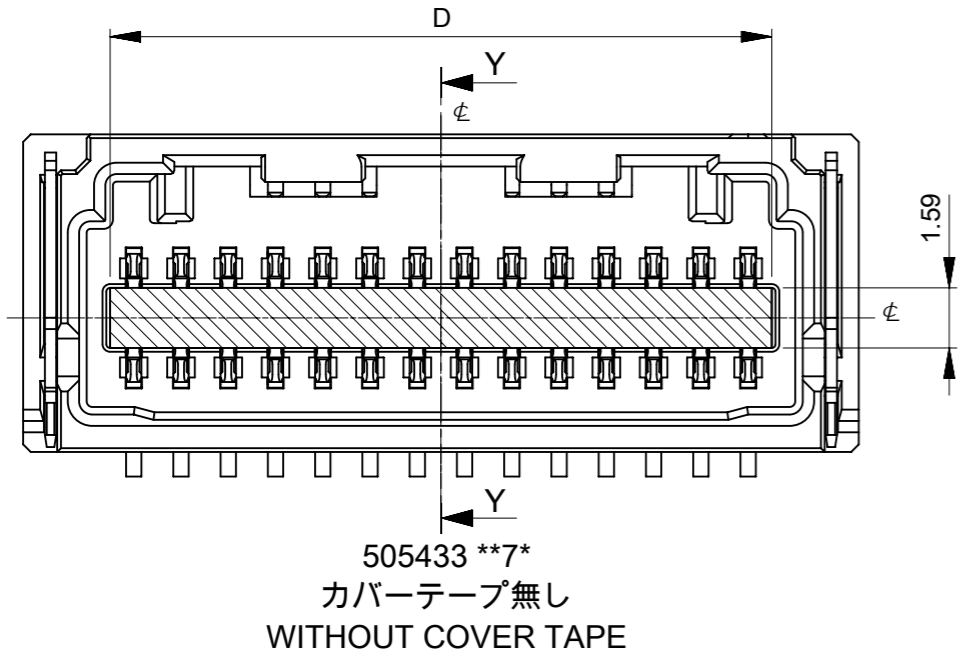
基板パターンレイアウト (参考)
(参考 : 基板厚 1.6mm, メタルマスク厚さ 0.15mm, マスク開口率 100%)
RECOMMEND PCB LAYOUT : COMPONENT SIDE
(REFERENCE : PCB THICKNESS 1.6mm, STENCIL THICKNESS 0.15mm, APERTURE RATIO 100%)

パターン非推奨エリア
パターンを引き回す際は、製品機能に影響がないことをご確認ください。
PATTERN IS NOT RECOMMENDED ON THE HATCHING AREA
PLEASE CHECK NOT TO HAVE PROBLEM FOR PRODUCT FUNCTION
WHEN SETTING PATTERN ON THE HATCHING AREA.

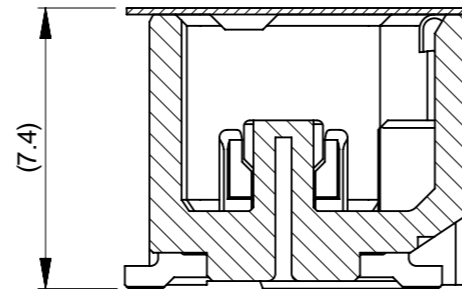
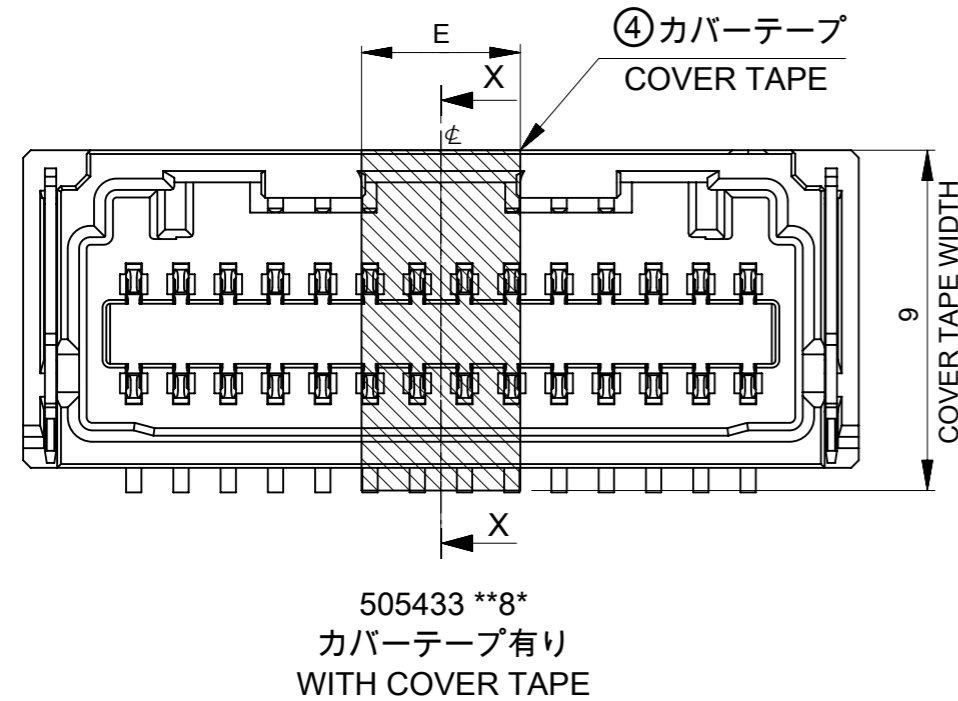
THIS DRAWING CONTAINS INFORMATION THAT IS PROPRIETARY TO MOLEX ELECTRONIC TECHNOLOGIES, LLC AND SHOULD NOT BE USED WITHOUT WRITTEN PERMISSION									
DIMENSION UNITS		SCALE		CURRENT REV DESC: REMOVED OBSOLETE PART NUMBERS AS PER PCN#515932.				<div>molex</div> <div>MICRO-LOCK PLUS 1.25 W/B DUAL ROW VERTICAL SMT PLUG ASSEMBLY TIN-BISMUTH PLATING</div> <div>PRODUCT CUSTOMER DRAWING</div>	
mm		NTS							
GENERAL TOLERANCES (UNLESS SPECIFIED)									
ANGULAR TOL ± 3.0 °									
4 PLACES		± 0.2		EC NO: 812554		2025/01/20			
3 PLACES		± 0.2		DRWN: RAVINR1					
2 PLACES		± 0.2		CHK'D: GGA					
1 PLACE		± 0.2		APPR: GGA		2025/02/25		2025/02/25	
0 PLACES		± 0.2		INITIAL REVISION:				DOCUMENT NUMBER	
				DRWN: TAKAIKE				5054330000	
				APPR: TKANEKO				PSD	
								000	
								E1	
DRAFT WHERE APPLICABLE MUST REMAIN WITHIN DIMENSIONS		THIRD ANGLE PROJECTION		DRAWING		SERIES		MATERIAL NUMBER	
				A3-SIZE		505433		SEE CHART	
								CUSTOMER	
								GENERAL	
								SHEET NUMBER	
								2 OF 5	

10 9 8 7 6 5 4 3 2 1

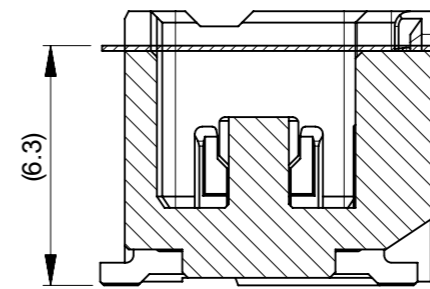
吸着エリア違い
SUCTION AREA DIFFERNECE



SECTION Y-Y
吸着高さ SUCTION HEIGHT



8-32極
8-32 CIRCUIT



34-42極
34-42 CIRCUIT

SECTION X-X
吸着テープ高さ COVER TAPE HEIGHT

4.2	5	26.25	42
		25	40
		23.75	38
		22.5	36
		21.25	34
		20	32
		18.75	30
		17.5	28
		16.25	26
		15	24
		13.75	22
		12.5	20
		11.25	18
		10	16
		8.75	14
		7.5	12
		6.25	10
		5	8
E	D	極数 CIRCUIT SIZE	

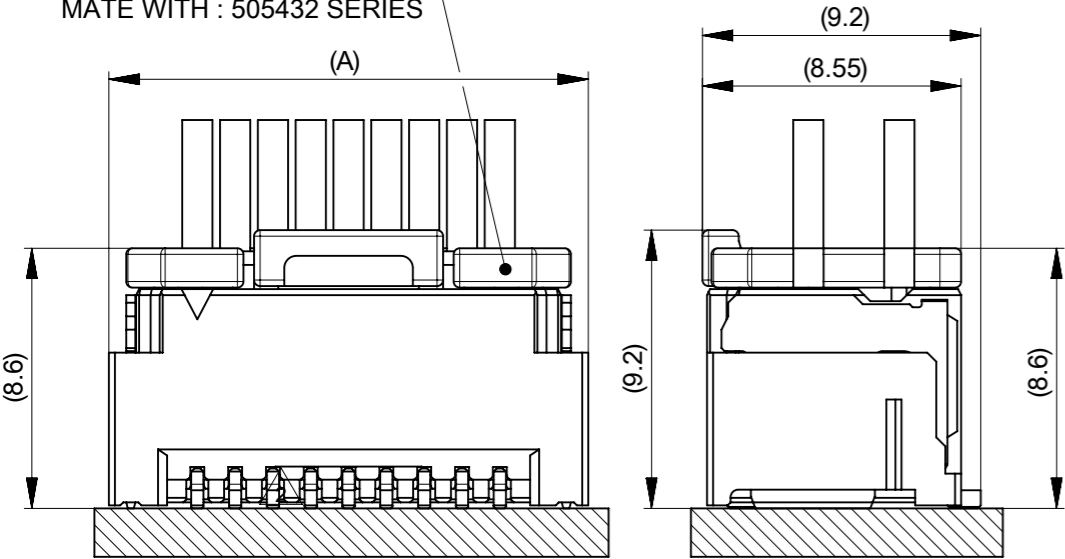
THIS DRAWING CONTAINS INFORMATION THAT IS PROPRIETARY TO MOLEX ELECTRONIC TECHNOLOGIES, LLC AND SHOULD NOT BE USED WITHOUT WRITTEN PERMISSION															
DIMENSION UNITS		SCALE		CURRENT REV DESC: REMOVED OBSOLETE PART NUMBERS AS PER PCN#515932.				<div>molex</div> <div>MICRO-LOCK PLUS 1.25 W/B DUAL ROW VERTICAL SMT PLUG ASSEMBLY TIN-BISMUTH PLATING</div>							
mm		NTS													
GENERAL TOLERANCES (UNLESS SPECIFIED)															
ANGULAR TOL ± 3.0 °															
4 PLACES		± 0.2		EC NO: 812554 DRWN: RAVINR1 2025/01/20 CHK'D: GGA 2025/02/25 APPR: GGA 2025/02/25				PRODUCT CUSTOMER DRAWING							
3 PLACES		± 0.2													
2 PLACES		± 0.2													
1 PLACE		± 0.2		INITIAL REVISION: DRWN: TAKAIKE 2016/12/26 APPR: TKANEKO 2016/12/28				DOCUMENT NUMBER		DOC TYPE	DOC PART	REVISION			
0 PLACES		± 0.2						5054330000		PSD	000	E1			
DRAFT WHERE APPLICABLE MUST REMAIN WITHIN DIMENSIONS				THIRD ANGLE PROJECTION		DRAWING		SERIES		MATERIAL NUMBER		CUSTOMER		SHEET NUMBER	
						A3-SIZE		505433		SEE CHART		GENERAL		3 OF 5	

△2 適合製品及び各種仕様書 APPLICABLE PRODUCTS AND VARIOUS SPECIFICATIONS

梱包仕様書 PACKAGING SPECIFICATION		5054339200 PS 200	
適合嵌合相手 MATE WITH	シリーズ番号 SERIES NUMBER	505432	214527
	リテーナー対応 RETAINER COMPLIANT	NOT COMPLIANT	COMPLIANT (NATURAL, BLACK, RED, BLUE)
適合リテーナーシリーズ番号 APPLICABLE RETAINER SERIES NUMBER		-	214528
製品仕様書 PRODUCT SPECIFICATION		5054320000 PS 002	2145270000-PS PS 000
コネクタ取扱説明書 APPLICATION SPECIFICATION		5054320000-AS PS 000	

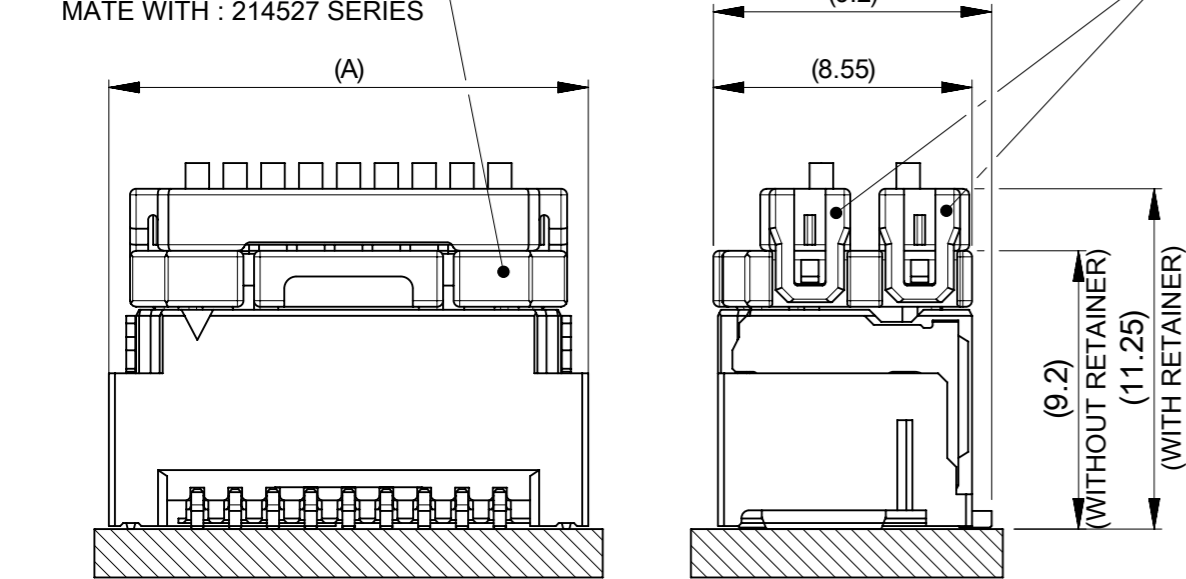
嵌合状態図
MATED CONNECTORS

△2 嵌合相手：505432シリーズ
MATE WITH：505432 SERIES



△2 リテーナー：214528シリーズ
RETAINER：214528 SERIES

△2 嵌合相手：214527シリーズ
MATE WITH：214527 SERIES



△5 505433**** 発注番号一覧 ORDER NUMBER LIST

WITHOUT				WITH					COVER TAPE
BLUE	RED	BLACK	NATURAL (BEIGE)	GREEN	BLUE	RED	BLACK	NATURAL (BEIGE)	HOUSING COLOR
5054334274	5054334272	5054334271	5054334270	----	5054334284	5054334282	5054334281	5054334280	42
5054334074	5054334072	5054334071	5054334070	5054334086	5054334084	5054334082	5054334081	5054334080	40
5054333874	5054333872	5054333871	5054333870	----	5054333884	5054333882	5054333881	5054333880	38
5054333674	5054333672	5054333671	5054333670	----	5054333684	5054333682	5054333681	5054333680	36
5054333474	5054333472	5054333471	5054333470	----	5054333484	5054333482	5054333481	5054333480	34
5054333274	5054333272	5054333271	5054333270	----	5054333284	5054333282	5054333281	5054333280	32
5054333074	5054333072	5054333071	5054333070	----	5054333084	5054333082	5054333081	5054333080	30
5054332874	5054332872	5054332871	5054332870	----	5054332884	5054332882	5054332881	5054332880	28
5054332674	5054332672	5054332671	5054332670	----	5054332684	5054332682	5054332681	5054332680	26
5054332474	5054332472	5054332471	5054332470	----	5054332484	5054332482	5054332481	5054332480	24
5054332274	5054332272	5054332271	5054332270	----	5054332284	5054332282	5054332281	5054332280	22
5054332074	5054332072	5054332071	5054332070	----	5054332084	5054332082	5054332081	5054332080	20
5054331874	5054331872	5054331871	5054331870	----	5054331884	5054331882	5054331881	5054331880	18
5054331674	5054331672	5054331671	5054331670	----	5054331684	5054331682	5054331681	5054331680	16
5054331474	5054331472	5054331471	5054331470	----	5054331484	5054331482	5054331481	5054331480	14
5054331274	5054331272	5054331271	5054331270	----	5054331284	5054331282	5054331281	5054331280	12
5054331074	5054331072	5054331071	5054331070	----	5054331084	5054331082	5054331081	5054331080	10
5054330874	5054330872	5054330871	5054330870	----	5054330884	5054330882	5054330881	5054330880	8

発注番号 ORDER NUMBER

エンボステープ梱包
PACKAGING STYLE：EMBOSSED TAPE AND REEL

極数
CIRCUIT SIZE

THIS DRAWING CONTAINS INFORMATION THAT IS PROPRIETARY TO MOLEX ELECTRONIC TECHNOLOGIES, LLC AND SHOULD NOT BE USED WITHOUT WRITTEN PERMISSION													
DIMENSION UNITS		SCALE		CURRENT REV DESC: REMOVED OBSOLETE PART NUMBERS AS PER PCN#515932.				<div>molex</div> <div>MICRO-LOCK PLUS 1.25 W/B DUAL ROW VERTICAL SMT PLUG ASSEMBLY TIN-BISMUTH PLATING</div>					
mm	NTS												
GENERAL TOLERANCES (UNLESS SPECIFIED)													
ANGULAR TOL ± 3.0 °													
4 PLACES	±	0.2	EC NO: 812554 DRWN: RAVINR1 2025/01/20 CHK'D: GGA 2025/02/25 APPR: GGA 2025/02/25				PRODUCT CUSTOMER DRAWING						
3 PLACES	±	0.2											
2 PLACES	±	0.2											
1 PLACE	±	0.2	INITIAL REVISION:				DOCUMENT NUMBER		DOC TYPE	DOC PART	REVISION		
0 PLACES	±	0.2	DRWN: TAKAIKE 2016/12/26 APPR: TKANEKO 2016/12/28				5054330000		PSD	000	E1		
DRAFT WHERE APPLICABLE MUST REMAIN WITHIN DIMENSIONS		THIRD ANGLE PROJECTION		DRAWING		SERIES		MATERIAL NUMBER		CUSTOMER		SHEET NUMBER	
				A3-SIZE		505433		SEE CHART		GENERAL		5 OF 5	