

A

B

C

D

E

F

G

H

A

B

C

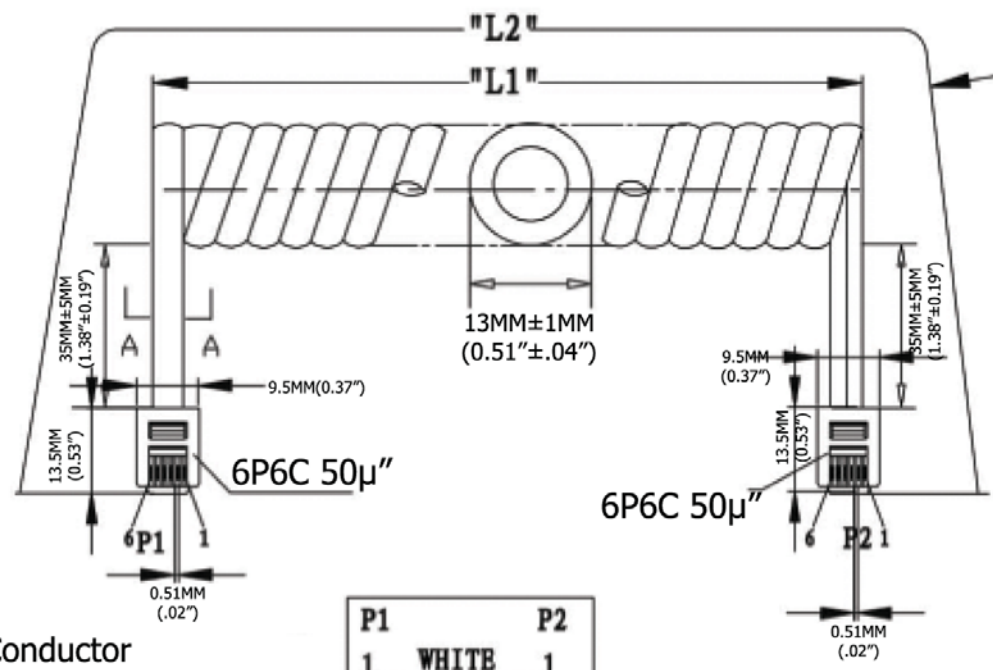
D

E

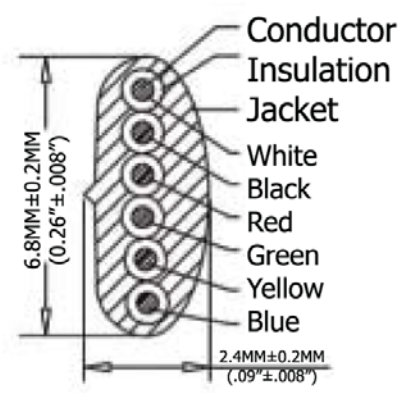
F

G

H



Extended length is with 500g of force



P1	P2
1	WHITE
2	BLACK
3	RED
4	GREEN
5	YELLOW
6	BLUB

- Material:**
- Plug Housing: Polycarbonate, clear
 - Plug Terminal: 0.36"[0.14MM] Thick Phosphor Bronze
 - Connector: 50 μ " of Selective Gold Contact Plating
 - Area, Gold flash over the remainder
 - Over 2.54 μm [.000100] thick nickel underplate
 - Conductor(X6C): 26AWG (0.12X12) Bare Copper
 - Insulation(X6C): PP6331 ID 0.95-1.0
 - Jacke: PVC No UL 80 P
 - Package: Individual PE Bag

Extended Length ("L2")	Typical Retracted Length ("L1")
168.0 Inches - 193.2 Inches	53.5 Inches
4,267.2MM-4,907.28MM	1,358.9MM

SBC: A=A

Scale	1:1					Name	Item No.
TOLERANCE					Drawn	11.02.11	AT-C-26-6/6/W-14/R
X.X	± 0.40				Approved	Chappell	
X.XX	± 0.25						Title NON-UL 26 AWG (0.12X12)*6C, O.D.: 2.4*6.8MM, Reverse Plug, 50 μ " of contact plating, WHITE
X.XXX	± 0.15						Drawing No.
Angle	$\pm 3^\circ$						rev00
							Replace
							Sheet
		Modification	Date	Name			

