

Amphenol
FCI

© 2016 APCI

spec ref	-	dr	Leborn Luo	2017/09/11	projection	mm	size	A2	scale	5:1
tolerance std	ISO 406 ISO 1101	eng	Leborn Luo	2017/12/05	chr	Fancy Zhang	2017/12/04	ecn no	-	
surface	ISO 1302	appr	Pei-Ming Zheng	2017/12/05	product family	-	rel level	Released		
		Amphenol FCI	title	HPCE BTB VERT REC 24S(WITH GUIDE POST)	cat. no.	-	Product - Customer Drw	sheet 1 of 3	rev	A

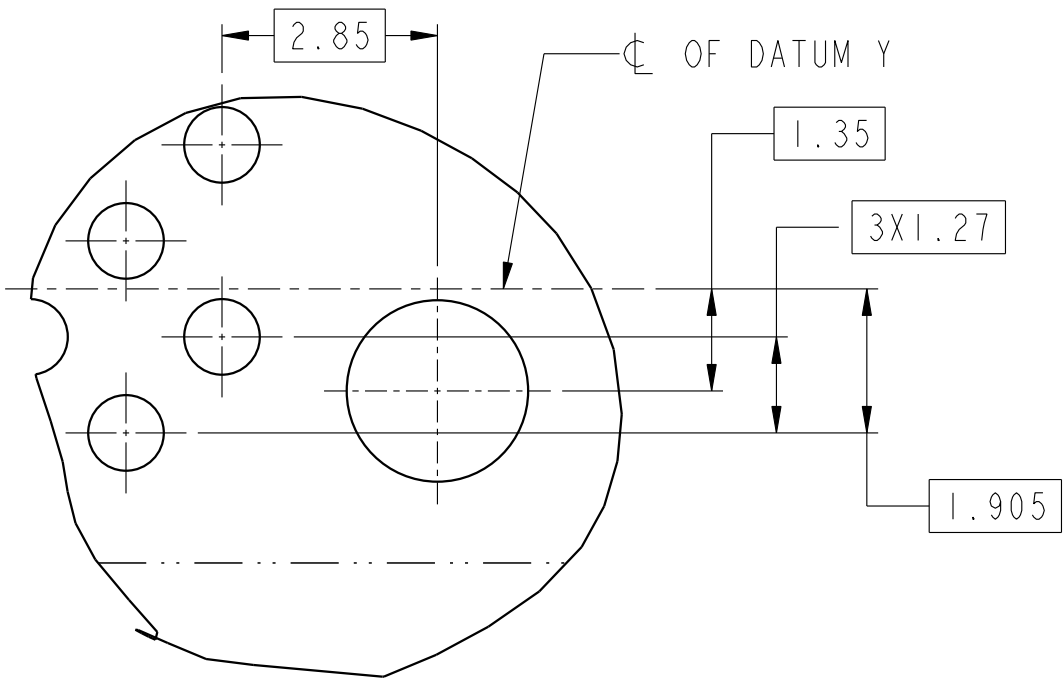
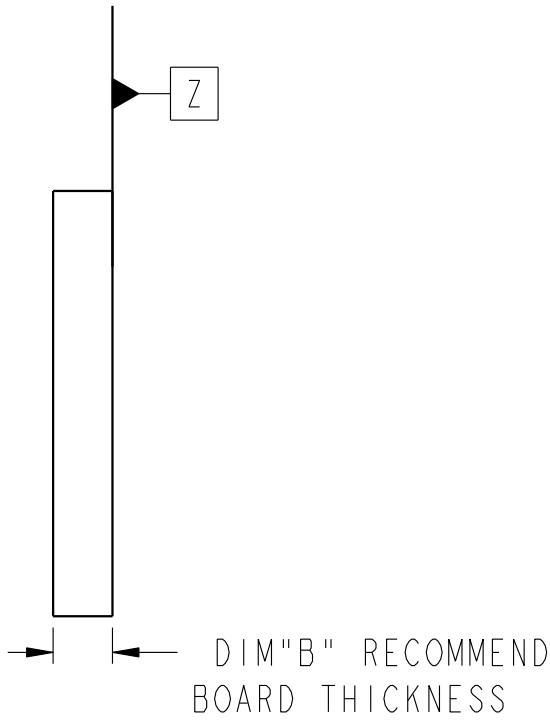
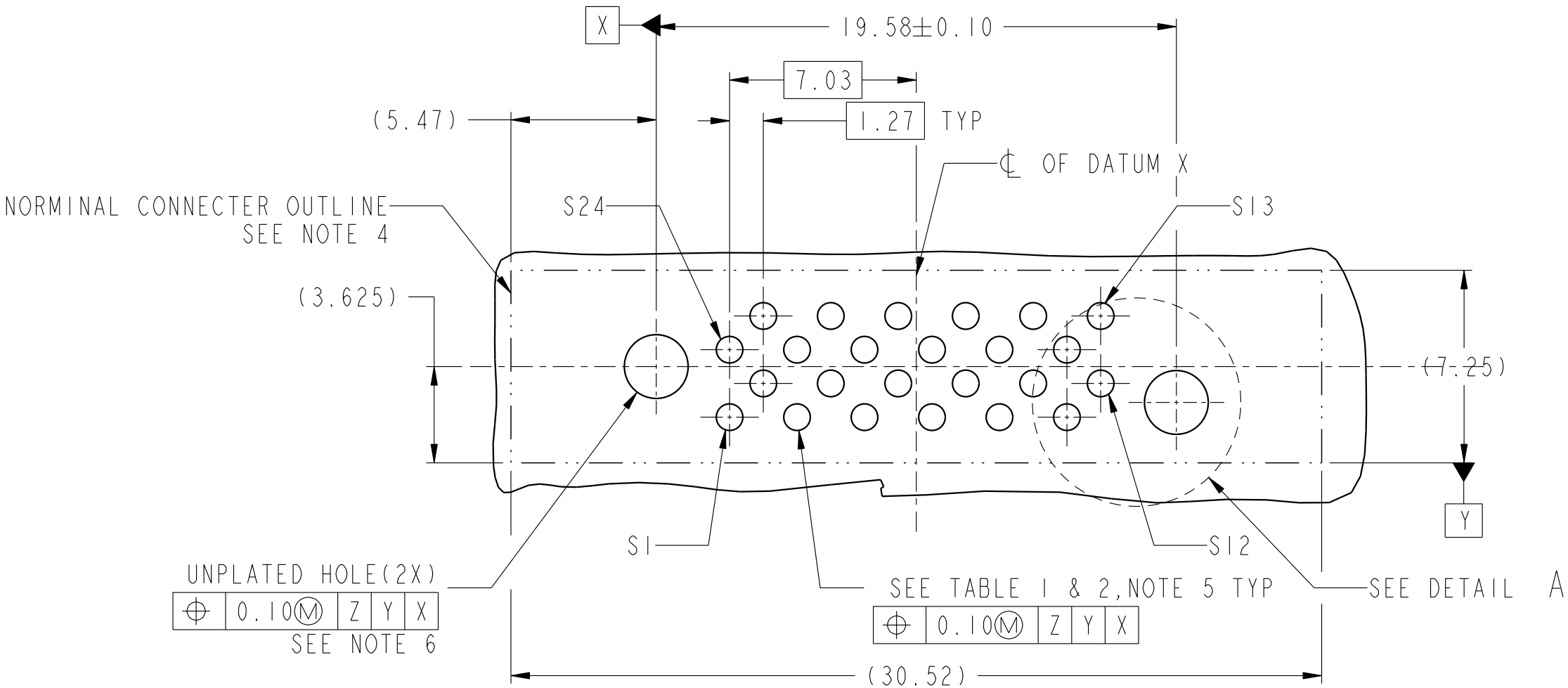
PDS: Rev :A

STATUS:Released

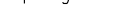

Printed: Dec 06, 2017

CONTACT TYPE	TOP LAYER DESCRIPTION	TABLE 1 (HPCE / SOLDER TAILS) PLATED THROUGH-HOLE REQUIREMENTS				
		DRILLED HOLE DIAMETER	COPPER THICKNESS	TIN-LEAD THICKNESS	TIN THICKNESS	FINISHED HOLE DIAMETER
SIGNAL	TIN-LEAD	1.10-1.16 (1.15 DRILL)	0.025 - 0.050	0.005 - 0.015	--	0.94 - 1.10
	IMMERSION TIN	1.10-1.16 (1.15 DRILL)	0.025 - 0.050	--	0.9 - 1.5um	0.94 - 1.10
	COPPER	1.10-1.16 (1.15 DRILL)	0.025 - 0.050	--	--	0.94 - 1.10

CONTACT TYPE	TOP LAYER DESCRIPTION	TABLE 2 (HPCE / PRESS-FIT TAILS) PLATED THROUGH-HOLE REQUIREMENTS				
		DRILLED HOLE DIAMETER	COPPER THICKNESS	TIN-LEAD THICKNESS	TIN THICKNESS	FINISHED HOLE DIAMETER
SIGNAL	TIN-LEAD	0.81-0.86 (0.85 DRILL)	0.025 - 0.050	0.005 - 0.015	--	0.65 - 0.80
	IMMERSION TIN	0.81-0.86 (0.85 DRILL)	0.025 - 0.050	--	0.9 - 1.5um	0.70 - 0.80
	COPPER	0.81-0.86 (0.85 DRILL)	0.025 - 0.050	--	--	0.70 - 0.80



DETAIL A
SCALE 10:1

spec ref -				dr Leborn Luo		2017/09/11		projection		mm		size A2		scale 5:1			
tolerance std				eng Leborn Luo		2017/12/05						ecn no -					
ISO 406		chr Fancy Zhang		2017/12/04		rel level Released											
ISO 1101		appr Pei-Ming Zheng		2017/12/05		product family -											
TOLERANCES UNLESS OTHERWISE SPECIFIED				Amphenol FCI		title		HPCE BTB VERT REC				dwg no		10145311		rev A	
surface		linear		0.X		±0.5											
				0.XX		±0.25											
				0.XXX		±0.10											
		ISO 1302		angular		0°		±2°		cat. no.		-		Product - Customer Drw			

