

Plastic Micro Servo Adapter for LEGO Cross - 16mm long

PRODUCT ID: 4252

IN STOCK

 [Order now to ship today](#)

1	ADD TO CART
---	-----------------------------

1-9

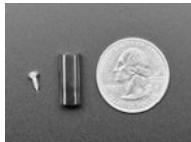
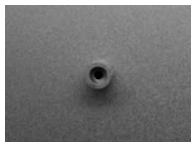
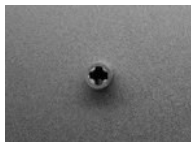
10-99

100+

[ADD TO WISHLIST](#)

[DESCRIPTION](#)

[TECHNICAL DETAILS](#)



DESCRIPTION

Who doesn't love LEGO and compatible bricks? Nobody! Except when we accidentally step on them. There are soooo many mechanical things one can make with those ubiquitous bricks, plates, gears, pulleys. Say a [13-meter high LEGO London Tower Bridge...](#)

But what do you do when you want to add LEGO-compatible bricks and parts to your servo arms and horns? This is the adapter you need! Just push the axle housing end onto the shaft of your [Micro Servo](#), and it's ready to adapt to the standard LEGO-compatible cross axle parts, including gears and wheels. So easy, we think this will enable many creative endeavors.

Comes 1 x per order - [fits our Micro Servo](#) only! **Not guaranteed to fit with any other kind of servo splines, and definitely doesn't fit our standard servos.**



TECHNICAL DETAILS

MAY WE ALSO SUGGEST...



Adafruit



Micro Servo Arm and Horn



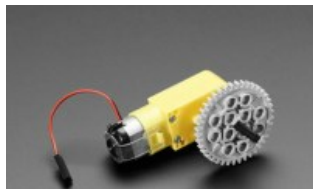
Black Multi-Hub Wheel for



Micro servo



LEGO compatible Brick



DC Gearbox "TT" Motor to



Micro Servo with 3-pin JST



RJ12 Jack Connectors -

DISTRIBUTORS [EXPAND TO SEE DISTRIBUTORS](#)

4.9 ★★★★★
Google
Customer Reviews