



ENTERPRISE-CLASS  
CELLULAR ROUTERS FOR  
RUGGED APPLICATIONS



# DIGI TRANSPORT® WR44 R

All-in-one cellular router with advanced routing and VPN features,  
designed specifically for use in rugged environments

The Digi TransPort WR44 R is a rugged, all-in-one 4G LTE Advanced mobile communications solution with true enterprise-class routing, security and firewall. Featuring a heavy-duty cast aluminum enclosure, it offers a flexible interface design with an optional integrated Wi-Fi access point (with multi SSID), USB, serial and 4-port Ethernet switch, as well as a variety of configuration options including GPS and CAN support.

These routers are ideal for transportation and mobile applications. Flexible power options include 9-36 VDC locking barrel or automotive Molex connectors for direct integration into vehicle applications. Also ideal for mobile

applications is the cellular to Wi-Fi autoswitch feature, which uses the highest speed/lowest cost WAN network available.

All Digi TransPort products offer an advanced routing, security and firewall feature set including stateful inspection firewall and integrated VPN. Enterprise class protocols incorporate BGP, OSPF and VRRP+. Advanced features allow the Digi TransPort to be used as a component of a PCI compliant network.

Digi Remote Manager® provides easy setup, configuration and maintenance of large installations of Digi TransPort and third-party devices.

## BENEFITS

- Rugged, enterprise-class cellular routers with advanced dynamic routing, security and firewall features
- Heavy-duty cast aluminum enclosure for reliable performance in rugged environments
- Integrated 802.11 ac/a/b/g/n; a/n Wi-Fi access point (optional) and 4-port Ethernet switch
- Flexible interfaces including GPS and CAN with DC power options
- Cellular to Wi-Fi autoswitch feature automatically uses the highest speed/lowest cost WAN network available
- Digi Remote Manager® provides mass configuration, device management and troubleshooting tools

## RELATED PRODUCTS



Digi TransPort®  
WR11 XT



Digi TransPort®  
WR21



Digi TransPort®  
WR44 RR

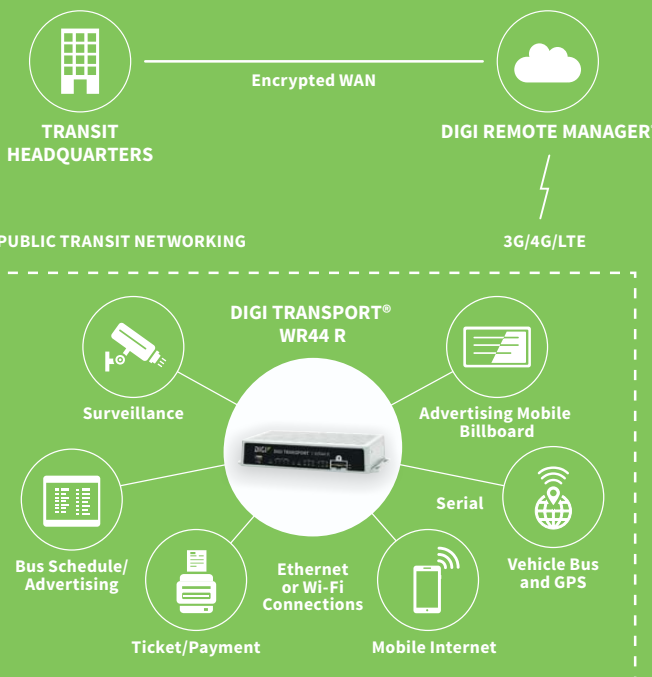


Accessories



Digi Remote  
Manager®

## APPLICATION EXAMPLE



## SPECIFICATIONS

## Digi TransPort® WR44 R

## WIRELESS INTERFACES

## CELLULAR\*

LTE - NORTH AMERICA/EMEA (M8)	LTE Advanced CAT 6: 700(B12,B13,B29)/800(B20,B26)/850(B5)/900(B8)/AWS(B4)/1800(B3)/1900(B2,B25)/2100(B1)/2300(B30)/2500(B41)/2600(B7) 3G HSPA+: 850/900/AWS/1800/1900/2100 MHz Transfer rate (max): 300 Mbps down, 50 Mbps up Approvals: PTCRB, AT&T, Verizon, Vodafone (pending)
LTE - EMEA/APAC (M7)	LTE CAT 4: 800(B20)/900(B8)/1800(B3)/2100(B1)/2600(B7) HSPA: 900/2100 MHz EDGE: 900/1800 MHz Transfer rate (max): 150 Mbps down, 50 Mbps up
LTE - ANZ/LATAM (L9)	LTE-Advanced CAT 6: 700(B28)/850(B5,B18,B19)/900(B8)/1500(B21)/1800(B3)/1900(B39)/2100(B1)/2600(B7,B38)/2300(B40)/2500(B41) 3G HSPA+: 800/850/900/1700/2100 MHz Transfer rate (max): 300 Mbps down, 50 Mbps up
LTE - EMEA/APAC (M2)	LTE CAT 3: 450(B31)/800(B20)/1800(B3)/2600 (B7) HSPA+: 900/2100 MHz EDGE: 900/1800 MHz Transfer rate (max): 100 Mbps down, 50 Mbps up
CONNECTOR	(2) 50 Ω SMA (Center pin: female)
SIM SLOTS	(2) Mini-SIM (2FF)
SIM SECURITY	SIM slot cover plate

## WI-FI\*\*

STANDARD	802.11 ac/a/b/g/n 2.4/5 GHz
MODES	Access point, client and support for multiple SSID
TRANSMIT POWER	20 dBm + 1.0/-1.5 dBm
RECEIVE SENSITIVITY	54 Mbps / <-72 dBm and 11 Mbps / -90 dBm
SECURITY	Open or shared key authentication; WEP (64- and 128-bit) encryption; WPA/WPA2 with RADIUS (WPA enterprise and pre-shared keys)
CONNECTORS	(2) 50 Ω RP-SMA (center pin: male)

## GPS\*\*

CHANNELS	50
SENSITIVITY	-163 dB
PROTOCOL	NMEA 0183 V2.3 sentence output; +3.3 VDC active antenna drive; NMEA stream to local serial port or over TCP/IP
NAVIGATION	Galileo ready
AUGMENTATION	SBAS
COLD START	< 27 seconds TTFF (90%)
HORIZONTAL ACCURACY	< 2.5 meters (90%)
VELOCITY ACCURACY	0.1m/s
CONNECTOR	(1) 50 Ω SMA (Center pin: female)
ADDITIONAL FEATURES	Send GPS via UDP/IP, TCP/IP (up to two destinations) or serial; Customize and/or send data using Python; GPS status query;

## WIRED INTERFACES

## SERIAL

PORTS	(1) DB-9; DCE
STANDARD	RS-232
SIGNAL SUPPORT	TXD, RXD, RTS, CTS, DTR, DCD, DSR, RI
FLOW CONTROL	Software (XON/XOFF), hardware supported

## ETHERNET

PORTS	(4) RJ-45; 10/100 Mbps (auto-sensing)
-------	---------------------------------------

## USB

PORTS	(1) USB 2.0 Type A
-------	--------------------

## OTHER

EXPANSION CARDS	Option of fleet expansion card
-----------------	--------------------------------

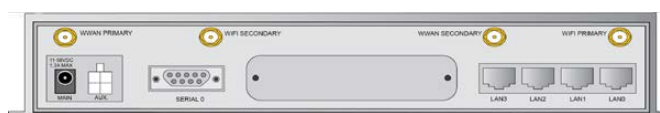
\* Transfer rates are network operator dependent.

\*\* Optional hardware.

SPECIFICATIONS		Digi TransPort® WR44 R	
SOFTWARE			
REMOTE MANAGEMENT		Digi Remote Manager* (cloud based); SNMP v1/v2c/v3 (user installed/managed)	
LOCAL MANAGEMENT		Web interface (HTTP/HTTPS); CLI (Telnet, SSH, SMS, Serial port)	
MANAGEMENT/ TROUBLESHOOTING TOOLS		FTP, SFTP, SCP, protocol analyzer with PCAP for Wireshark, event logging with Syslog and SMTP, NTP/SNTP	
MEMORY		128 MB NAND Flash/64 MB DDR2 SDRAM	
POWER			
INPUT		9 – 36 VDC	
CONSUMPTION		15W max, 8.5W typical	
CONNECTOR		Locking barrel and 4-pin terminal block (2 pins are used for power; the other 2 pins are used for I/O)	
PHYSICAL			
DIMENSIONS (L X W X H)		5.5 in x 10 in x 1.9 in (140 mm x 254 mm x 48 mm)	
WEIGHT		2.4 lbs (1.1 kg)	
STATUS LEDS		Power, LAN, Wi-Fi, Serial, WWAN (Link, Act, SIM), signal strength	
MATERIAL/RATING		Aluminum alloy / IP30	
MOUNTING		(4) mounting slots on the unit's flange	
ENVIRONMENTAL			
OPERATING TEMPERATURE		Non-Wi-Fi variants: -40° C to +70° C; Single-Wi-Fi variants: -20° C to +70° C; Dual-Wi-Fi variants: -20°C to +60°C; (Reduced cellular performance may occur above +60° C)	
STORAGE TEMPERATURE		-40° C to +85° C	
RELATIVE HUMIDITY		0% to 95% (non-condensing) @ 25° C	
ETHERNET ISOLATION		1.5 kV RMS	
SERIAL PORT PROTECTION (ESD)		15 kV	
APPROVALS			
CELLULAR		PTCRB, NAPRD.03, GCF-CC, R&TTE, EN 301 511	
CDMA/EV-DO		CDG TIA/EIA-690, CDG TIA/EIA-98-E	
SAFETY		UL 60950, CSA 22.2 No. 60950, EN60950	
EMISSIONS/IMMUNITY		CE, FCC Part 15 Class B, AS/NZS CISPR 22, EN55024, EN55022 Class B	
INDUSTRY		Vehicle Usage: E-Mark (Regulation 10.05) EN 300 019-2-5 (specification for environmental tests for ground vehicle installations - covers temperature, humidity, vibration and shock)	
WARRANTY			
PRODUCT WARRANTY		3 years	

ENTERPRISE SOFTWARE	DESCRIPTION
PROTOCOLS	HTTP, HTTPS, FTP, SFTP, SSL, SMTP, SNMP (v1/v2c/v3), SSH, Telnet and CLI for web management; Remote management via Digi Remote Manager; SMS management, protocol analyzer, ability to capture PCAP for use with Wireshark; DynDNS; Dynamic DNS client compatible with BIND9/No-IP/DynDNS
SECURITY/VPN	Stateful inspection firewall with scripting, address and port translation; VPN: IPSec with IKEv1, IKEv2, NAT Traversal; SSL, SSLv2, FIPS 197, open VPN client and server; PPTP, L2TP; (5) VPN tunnels (upgradable to a maximum of 200); Cryptology: SHA-1, MD5, RSA; Encryption: DES, 3DES and AES up to 256-bit; Authentication: RADIUS, TACACS+, SCEP for X.509 certificates; Content filtering (via 3rd party) ; MAC address filtering; VLAN support; Ethernet port isolation
ROUTING/FAILOVER	IP pass-through ; NAT, NAPT with IP port forwarding; Ethernet bridging; GRE; Multicast routing; Routing protocols: PPP, PPPoE, RIP (v1, v2) OSPF, SRI, BGP, iGMP routing (multicast); RSTP (Rapid Spanning Tree Protocol); IP failover: VRRP, VRRP+TM; Automatic failover/ failback to second GSM network/standby APN
OTHER PROTOCOLS	DHCP; Dynamic DNS client compatible with BIND9/No-IP/DynDNS; QoS via TOS/DSCP/WRED; Modbus UDP/TCP to serial; X.25 including XOT, SNA/IP, TPAD and PAD; Protocol switch; Modbus bridging for connecting diverse field assets

## PRODUCT IMAGES

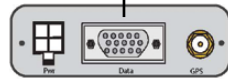


## SPECIFICATIONS

## Connector | Specification



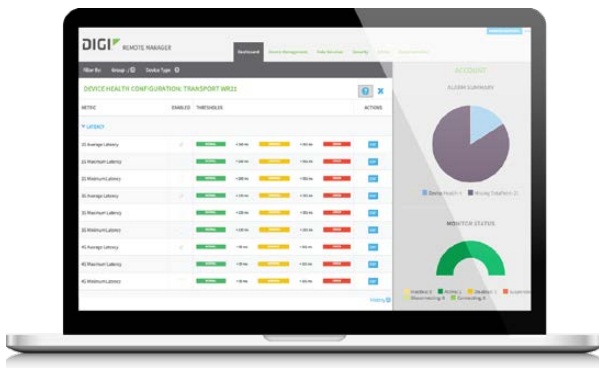
### FLEET (F1)



(1) 4-pin, (1) 15-pin, (1) SMA

Flexible transportation/fleet focused applications requiring CAN bus, J1708, GPS, Non-isolated digital I/O, Ignition Sense, 3-Axis accelerometer, and power control of Digi TransPort interfaces. Fully programmable via Python for embedded Digi TransPort applications.

## DIGI REMOTE MANAGER®



### CAPABILITIES

- Centralized management of remote devices over 3G/4G/LTE
- Define standard configurations and automatically monitor individual devices for PCI security compliance
- Report and alert on performance statistics, including connection history, signal quality, latency, data usage and packet loss
- No servers or applications to operate and maintain
- Complete tasks for your entire device network in minutes
- Edit configurations and update firmware for your individual devices or groups
- Monitor the status and location of your remote device via a web browser
- Active or deactivate cellular lines and monitor data to ensure you never incur overage charges

### INFRASTRUCTURE

- Hosted in a commercial-grade SAS 70-certified environment
- Superior availability, operating to 99.9% or greater
- Open APIs available to support application development

### SECURITY

- Certified SSAE-16 facilities
- Over 175 Security Controls in place to protect your data
- Enables compliance with security frameworks like PCI, HIPAA, NIST and more
- Earned SkyHigh's Cloud Trust Program highest ranking of Enterprise-Ready

## PART NUMBERS

## DIGI TRANSPORT WR44 R

WR44-M800-AE1-RF	Digi TransPort WR44 R - 4G LTE North America/EMEA, 4 Ethernet, Wi-Fi, RS232
WR44-M8F1-AE1-RF	Digi TransPort WR44 R - 4G LTE North America/EMEA, 4 Ethernet, Wi-Fi, RS232, GNSS, CAN
WR44-L900-AE1-RF	Digi TransPort WR44 R - 4G LTE APAC/LATAM, 4 Ethernet, Wi-Fi, RS232
WR44-L9F1-AE1-RF	Digi TransPort WR44 R - 4G LTE APAC/LATAM, 4 Ethernet, Wi-Fi, RS232, GNSS, CAN
WR44-M2F1-NE1-RF	Digi TransPort WR44 R - 4G LTE EMEA/APAC (450MHz), 4 Ethernet, Wi-Fi, RS232, GNSS, CAN
WR44-M700-CE1-RF	Digi TransPort WR44 R - 4G LTE EMEA/APAC, 4 Ethernet, RS232

PART NUMBERS	ACCESSORIES*
76000945	Antenna - WiFi, Table-top Mount, 2450/5800Mhz
76000960	Antenna - Cellular, 450 MHz
76000926	Antenna - Cellular, 3G/4G/LTE
76000954	Antenna Base – SMA, 1m, RG174
76000982	Accessory Kit - TransPort WR44R
76000808	DC Power Cord - 4-pin connector to bare wire, 4m.
76000816	AC Power Supply - 18VDC, Extended Temp. NEMA 5-15P (US) to 4-pin connector.
76000904	AC Power Supply - 18VDC, Extended Temp. NEMA 5-15P (EU) to 4-pin connector
76000823	AC Power Supply - Std Temperature, Universal Plugs (US, EU, UK, AU) to 12VDC - 2.1mm locking barrel plug
76000826	Cable - Ethernet, RJ45 to RJ45, 2m

\*Sold separately, unless otherwise noted.

FOR MORE INFORMATION  
PLEASE VISIT [WWW.DIGI.COM](http://WWW.DIGI.COM)

**DIGI SERVICE AND SUPPORT** / You can purchase with confidence knowing that Digi is always available to serve you with expert technical support and our industry leading warranty. For detailed information visit [www.digi.com/support](http://www.digi.com/support).

© 1996-2018 Digi International Inc. All rights reserved.  
All trademarks are the property of their respective owners.

91001643  
D15/119

**DIGI INTERNATIONAL WORLDWIDE HQ**  
877-912-3444 / 952-912-3444 / [www.digi.com](http://www.digi.com)

**DIGI INTERNATIONAL GERMANY**  
+49-89-540-428-0

**DIGI INTERNATIONAL JAPAN**  
+81-3-5428-0261 / [www.digi-intl.co.jp](http://www.digi-intl.co.jp)

**DIGI INTERNATIONAL SINGAPORE**  
+65-6213-5380

**DIGI INTERNATIONAL CHINA**  
+86-21-50492199 / [www.digi.com.cn](http://www.digi.com.cn)

