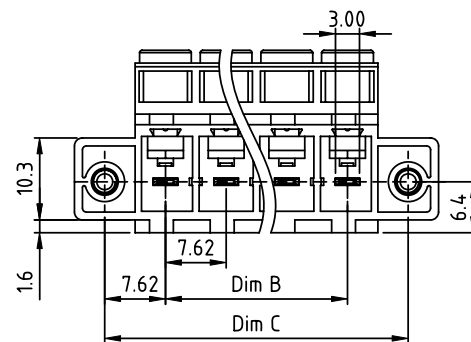
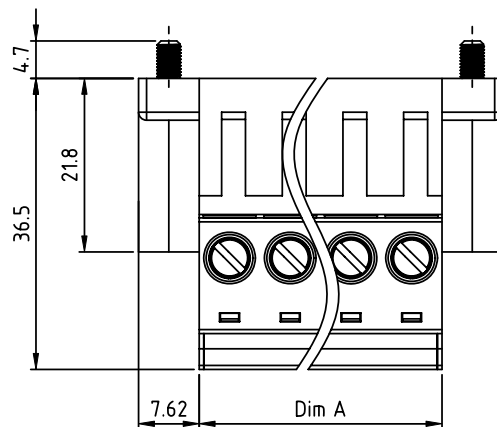



PRODUCT NUMBER	PITCH
KTxx01x400J0G	7.62 mm

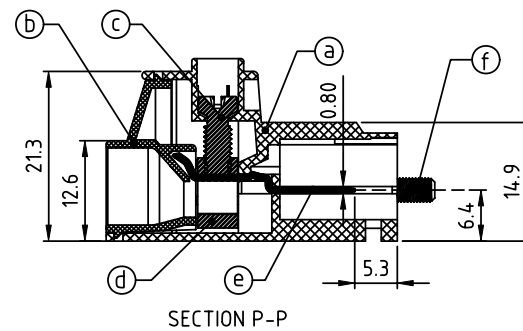
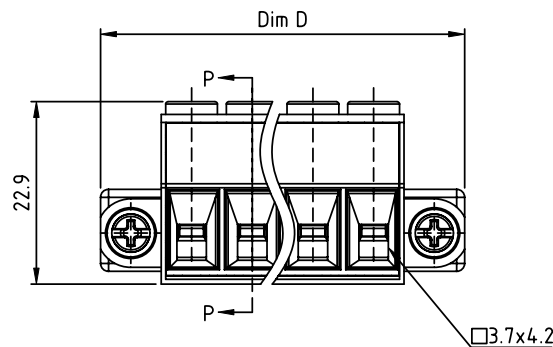


Material:

- Item①Terminal(housing) : Thermoplastic (UL94V-0)
- Item②Terminal(cover) : Thermoplastic (UL94V-0)
- Item③Terminal screw : Steel Zinc plating " - " slot type
- Item④Clamp : Brass, Ni plated
- Item⑤Female contact : Copper, Tin plated
- Item⑥With flange screw : Steel Zinc plating M3

Electrical cULus

- Voltage rating: 600VAC
- Current rating: 41A
- Solid wire (AWG): 8-24
- Stranded wire(AWG): 8-24
- Torque: 9.0 Lb-In
- Screw: M3.5
- Wire strip length: 10-11mm
- Withstanding Voltage: 1.6KV
- Operating temperature: -40°C to +115°C
- Safety Approval: 



N=Number of poles


Dim A	N×7.62
Dim B	(N-1)×7.62
Dim C	(N+1)×7.62
Dim D	(N+2)×7.62

Dimension

Poles	Tolerance
2P-5P	±0.20
6P-10P	±0.30
11P-16P	±0.40

PART NO.: KT xx 01 x 4 00J0 G

		Color	RoHS compliant (lead<4%) In copper Alloy
Solid block	0	Black (RAL9005)	
No. of poles	2	Red (RAL3001/D)	
02 2 poles	3	Orange(RAL2011/P)	
03 3 poles	4	Yellow(RAL1018/A)	
...	5	Green(RAL6018/T)	
16 16 poles	6	Blue (RAL5015/A)	
	8	Grey(RAL7035/D)	
	9	White(RAL1102)	
	C	Green(RAL6018/U)	

mat'l. code				surface ASME Y14.5	tolerance ASME Y14.5	projection	product family			
ltr	ecn	no	dr	date	tolerances unless otherwise specified		TERMINAL BLOCK			
					angles	MM	title			
					0.015		TERMINAL BLOCK			
					X±0.5		PLUGGABLE PLUG, FLANGE WITH SCREW			
					X.X±0.3		dwg no			
					X.XX±0.1		KTxx01x400J0G			
					dr	EVIN ZHONG	050614	sheet 1 of 1	size	A4
					enrg	EVIN ZHONG	050614			
					chr	HANKE FENG	050614			
					appd	SHI JUN	050614			
sheet	revision	A						type		
index	sheet	1						CUSTOMER Drawing		