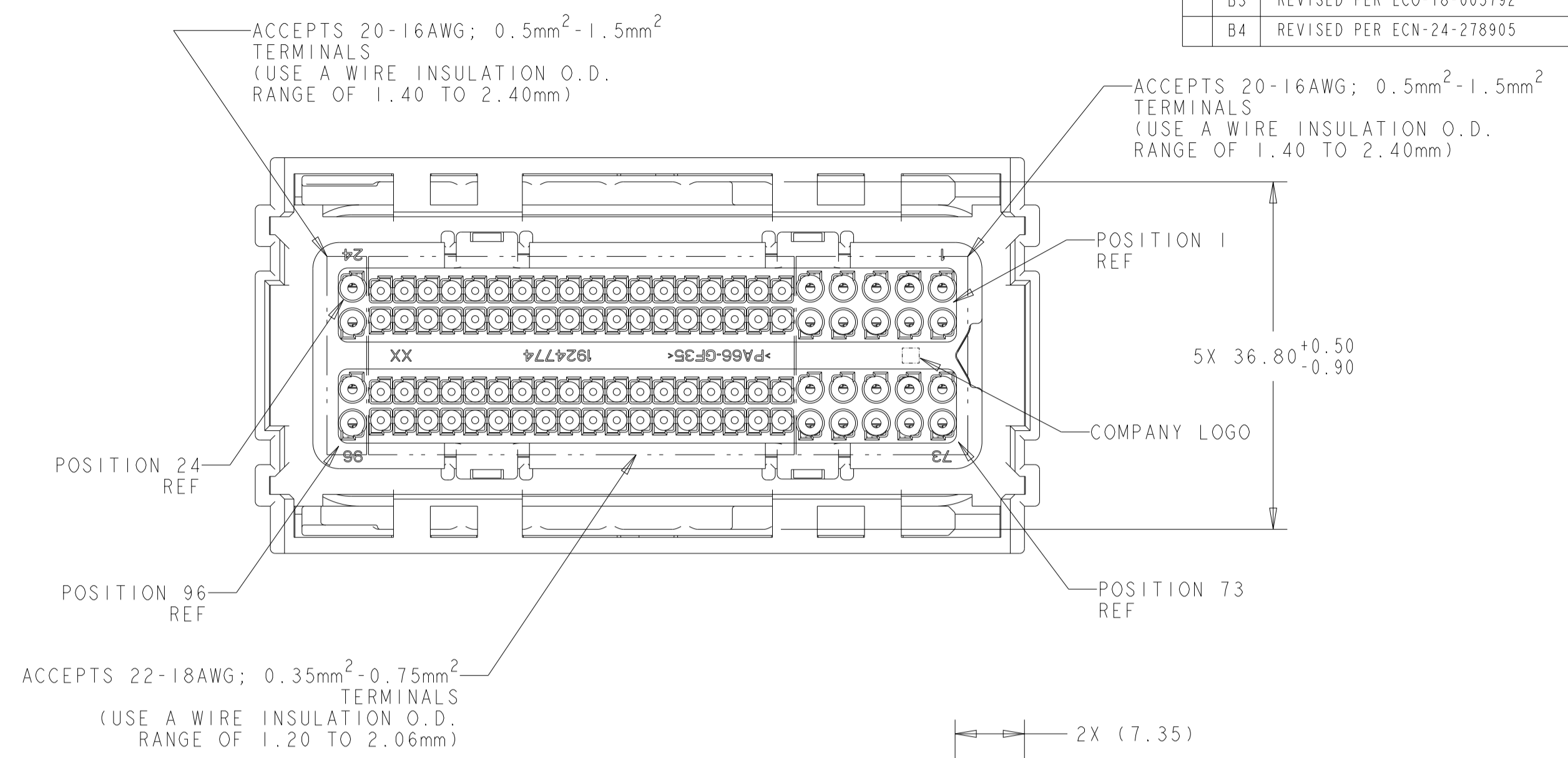
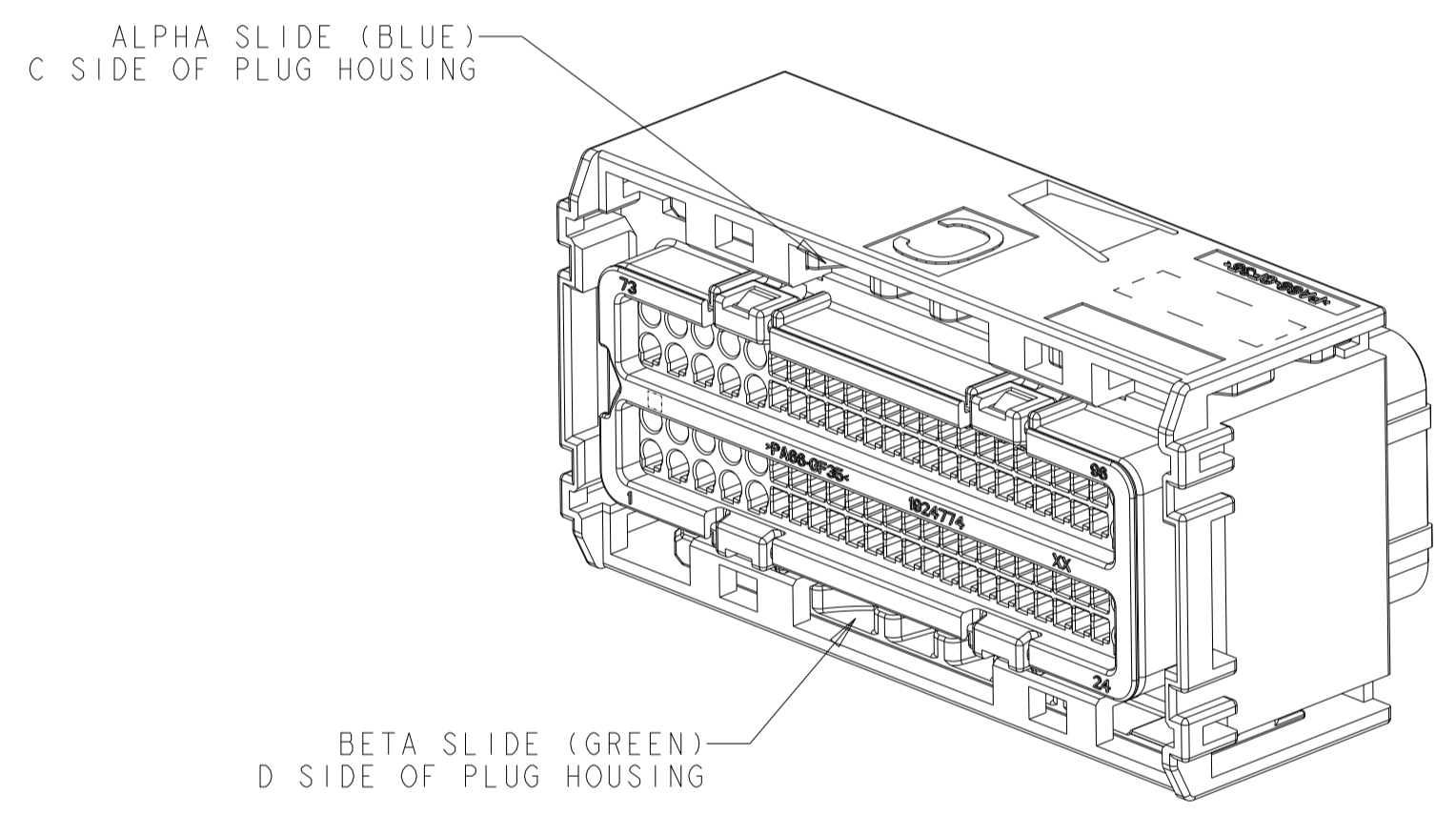


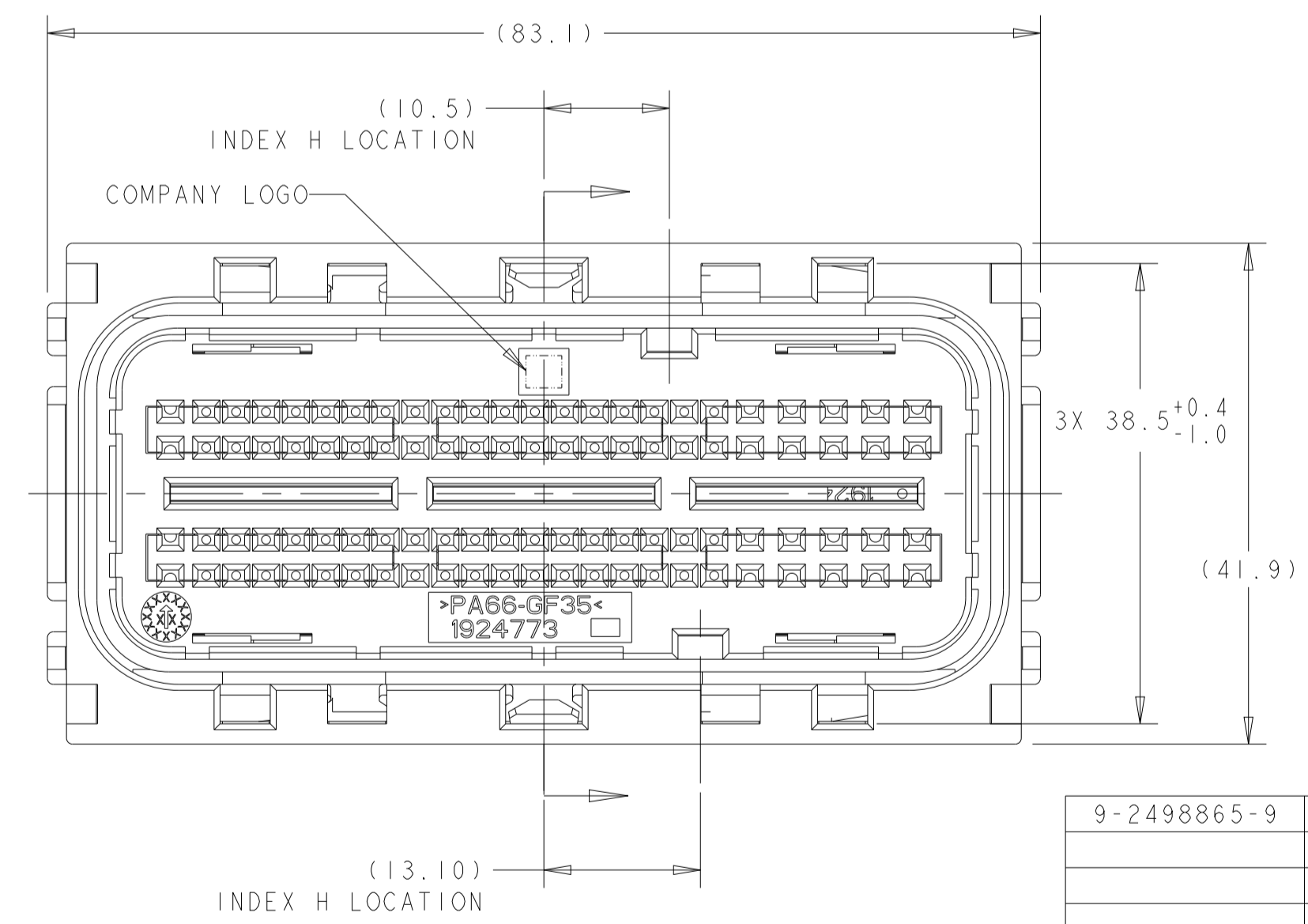
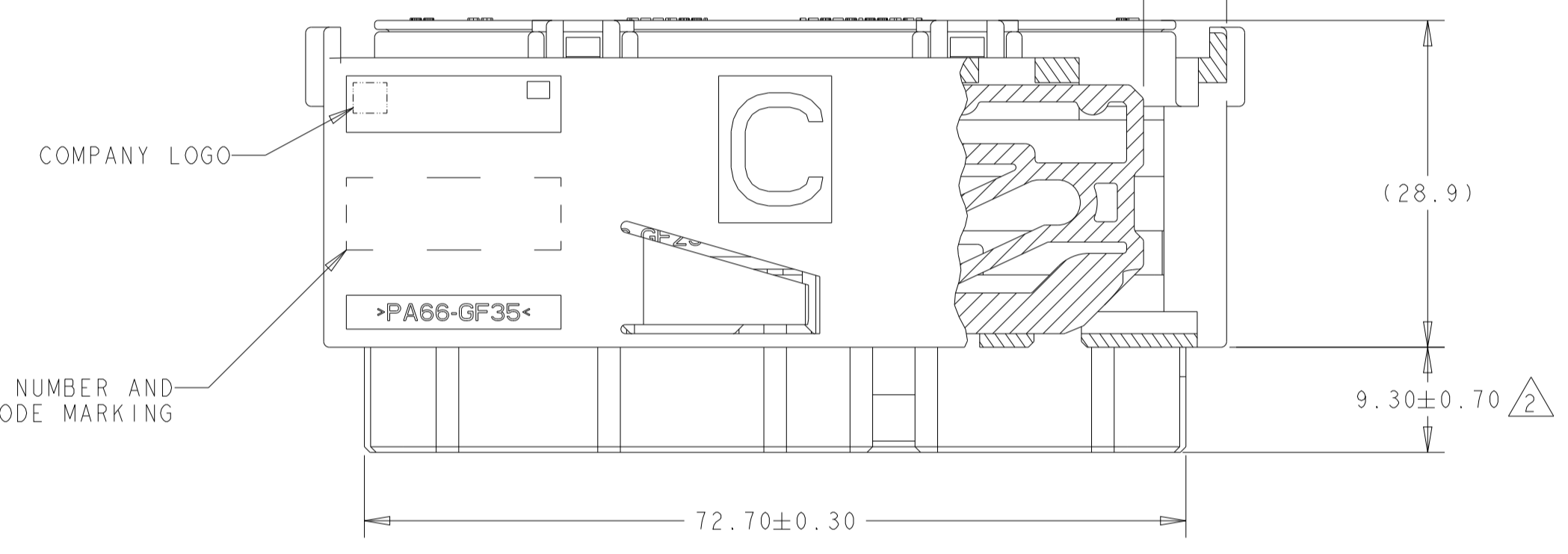
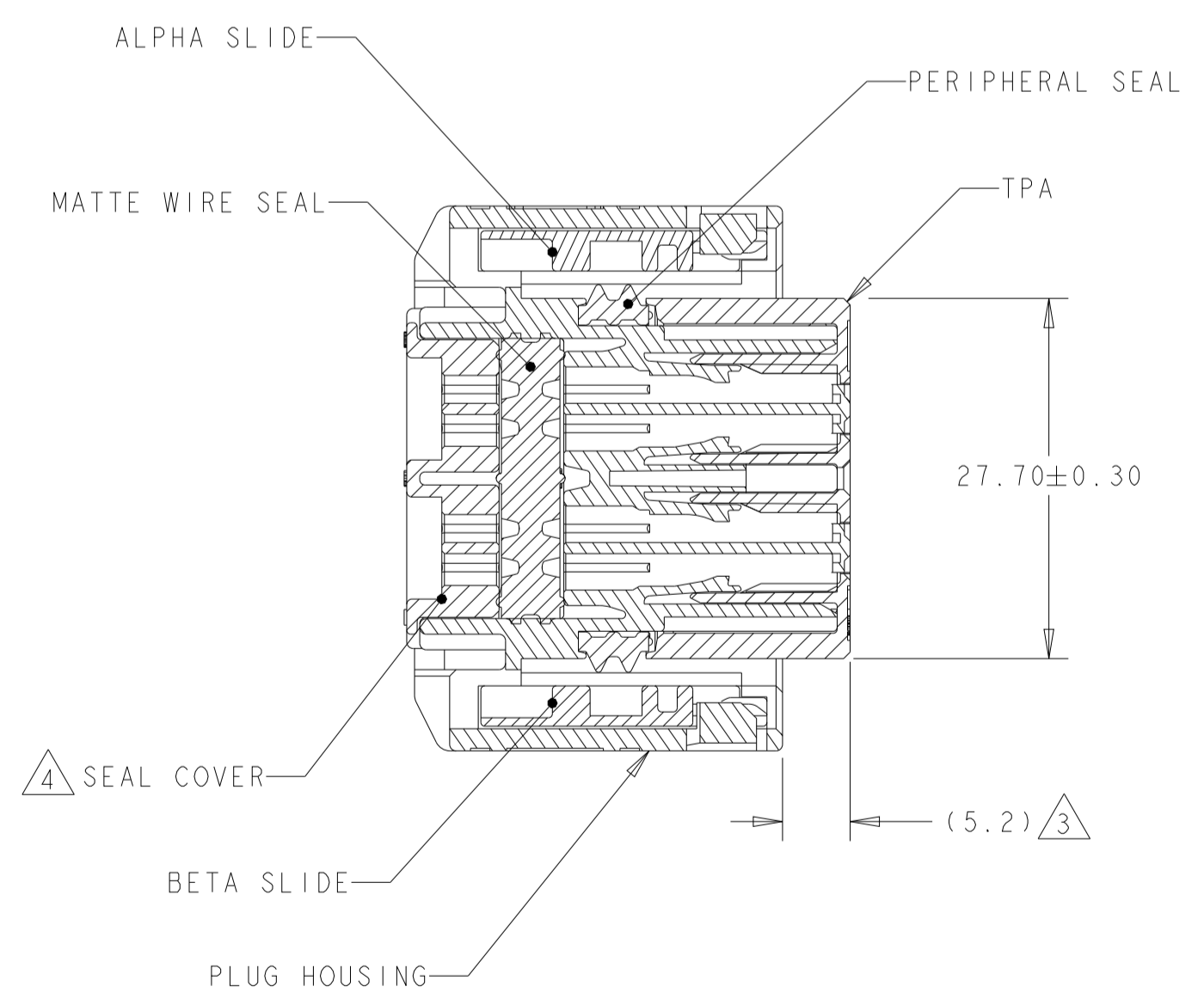
RIGHT EXIT PLUG ASSEMBLY SHOWN WITH OPTIONAL WIRE DRESS ASSEMBLY (MUST BE PURCHASED SEPARATELY) SCALE 1:1



REVISIONS				
P	LTN	DESCRIPTION	DATE	OWN APVD
B1		REVISED PER ECO-17-003168	07MAR2017	DD GK
B2		REVISED PER ECO-17-015829	01NOV2017	JMS GK
B3		REVISED PER ECO-18-005792	13APR2018	JMS GM
B4		REVISED PER ECN-24-278905	12AUG2024	CKM HC



(METHOD FOR IDENTIFYING EXIT ORIENTATION)



- ¹ PLUG HOUSING AND SEAL COVER: NYLON 6/6, BLACK. TPA: NYLON 6/6, COLOR - SEE TABLE. MATTE WIRE SEAL: SILICONE, LIGHT BLUE. PERIPHERAL SEAL: SILICONE, GREEN. ALPHA SLIDE: NYLON 6/6, BLUE. BETA SLIDE: NYLON 6/6, GREEN.

- ² TPA SHOWN IN PRE-LATCHED, AS SHIPPED, POSITION.
- ³ TPA SHOWN IN CLOSED POSITION.
- ⁴ SEE TABLE ON SHEET 2 FOR SEAL COVER PIN OUT CONFIGURATION.

- 5. PLUG ASSEMBLY MATES WITH TYCO ELECTRONICS INTERFACE DRAWING 1924771_INT, POLARIZATION A.
- 6. PLUG ASSEMBLY WILL ACCEPT THE FOLLOWING GET TERMINAL PART NUMBERS: 1393364-1 (GOLD 22AWG; 0.35mm²) 1393365-1 (GOLD 18-20AWG; 0.75mm²-0.5mm²) 1924878-1 (TIN/SILVER 22AWG; 0.35mm²) 1924879-1 (TIN/SILVER 18-20AWG; 0.75mm²-0.5mm²) 1924782-1 (TIN/SILVER 1.0mm²) 1924880-1 (TIN/SILVER 16AWG; 1.5mm²)

- ⁷ WIRE DRESS ASSEMBLY MUST BE INSTALLED ONTO PLUG ASSEMBLY WITH LEVER IN LOCKED POSITION.

- ⁸ APPLICATION SPEC'S: 408-10229, 408-10230
- 9. FORCE TO SEAT TPA COMPONENT FROM PRE-SET TO LOCKED (FULLY LOADED W/ TERMINALS) TO BE 83N MAX.
- 10. FORCE TO MOVE TPA FROM FULLY LOCKED TO PRE-SET TO BE 115N MAX. FLAT BLADE SCREWDRIVER SUGGESTED FOR REMOVAL OF TPA.

SUPERSEDED BY:
X-2498865-X

9-2498865-9	ALL CLOSED	BLUE	H	9-2098865-9
2498865-5	SEE TABLE, SH 2	BLUE	H	2098865-5
2498865-4	SEE TABLE, SH 2	BLUE	H	2098865-4
2498865-3	SEE TABLE, SH 2	BLUE	H	2098865-3
2498865-2	SEE TABLE, SH 2	BLUE	H	2098865-2
2498865-1	ALL OPEN	BLUE	H	2098865-1
SUPERSEDED BY	BLOCKED CIRCUITS	TPA COLOR	INDEX REF	PART NUMBER

THIS DRAWING IS A CONTROLLED DOCUMENT. DWN DL DRUMMOND 02NOV2010 CHK AJ VASBINDER 02NOV2010 APVD AJ VASBINDER 02NOV2010 NAME PLUG ASSEMBLY, 96 POSITION, INDEX H - RIGHT EXIT, SEALED, GPEC III

DIMENSIONS: TOLERANCES UNLESS OTHERWISE SPECIFIED:

mm	0 PLC ±
	1 PLC ±0.25
	2 PLC ±
	3 PLC ±
	4 PLC ±
	ANGLES ±
	FINISH ±

MATERIAL: ¹

WEIGHT: A100779C=2098865

CUSTOMER DRAWING SCALE 2:1 SHEET 1 OF 2 REV B4

