



[Home](#) [Design Center](#) > [Evaluation Hardware & Software](#) > [Product Evaluation Boards and Kits](#) >

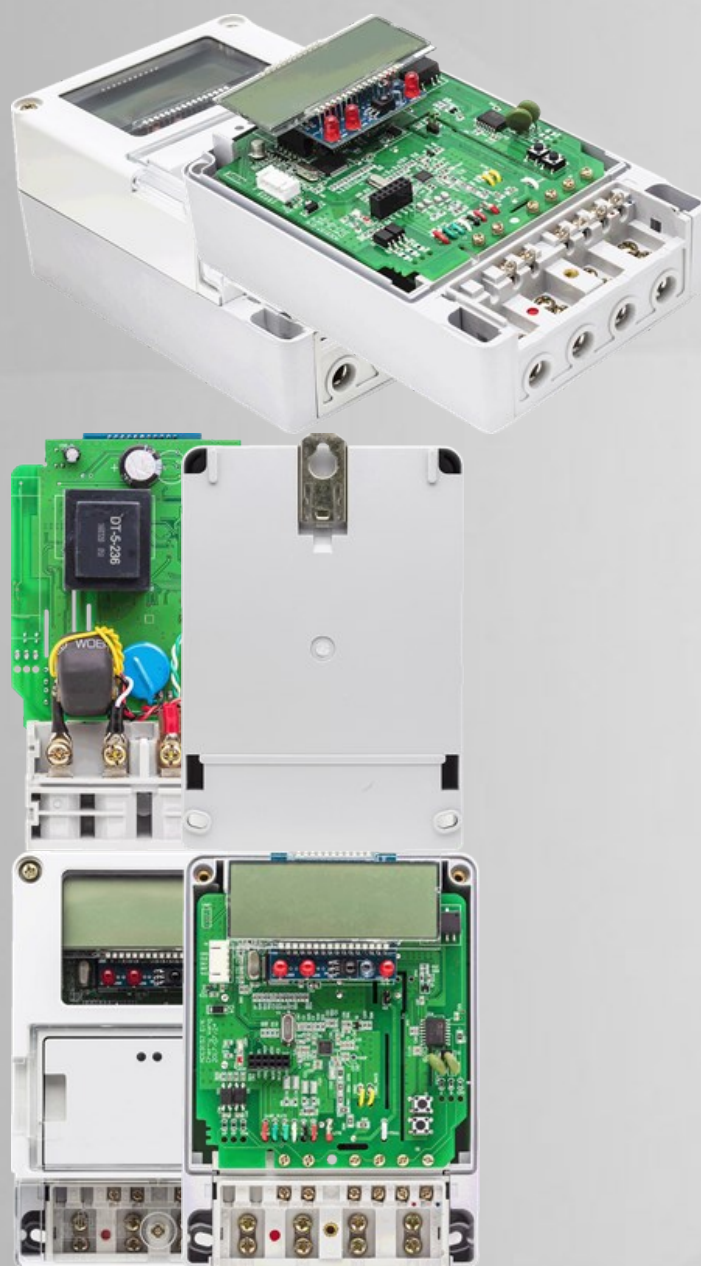
EVAL-ADE9153B [Design Center](#) > [Evaluation Hardware & Software](#) > [Product Evaluation Boards and Kits](#) >

EVAL-ADE9153B



EVAL-ADE9153B

ADE9153B Energy + mSure sensor monitor Evaluation Kit



Overview

Features and Benefits

Product Details

- mSure Enabled, Full Featured, Single Phase Energy Meter with the ADE9153B
 - Real time meter health monitoring using mSure manager
 - Class 0.5 accuracy
 - Line and Neutral measurements
 - I_{max} = 60A, I_{nominal} = 6A

Downloaded from [Arrow.com](https://www.arrow.com)

Markets & Technology

Energy

[Metering & Energy Monitoring](#)

Applicable Parts

- 110V-240V
- 50/60Hz
- LCD and CF outputs
- Voltage RMS, Current RMS, Active, Fundamental Reactive and Apparent Power and Energy measurements
- Power quality measurements
 - Dip , Swell
 - Frequency, Power Factor
- mSure Manager for analyzing and reporting mSure diagnostic and health data
- PC control using an isolated RS485 port
- PC software for full control of the ADE9153B

Buy

Model	Description	Price	RoHS
EVAL-ADE9153BEVKZ Contact ADI	Evaluation Electricity Meter	-	Yes

[Back](#)[Add to cart](#)[Select a country](#) ▾[Check Inventory](#)

Pricing displayed is based on 1-piece. The USA list pricing shown is for budgetary use only, shown in United States dollars (FOB USA per unit), and is subject to change. International prices may vary due to local duties, taxes, fees and exchange rates.

SOCIAL



QUICK LINKS

About ADI
Analog Dialogue
Contact us
News Room
Sales & Distribution

Partners
Careers
Investor Relations
Quality & Reliability
Analog Garage

LANGUAGES

English
简体中文
日本語
Русский

NEWSLETTERS

Interested in the latest news and articles about ADI products, design tools, training and events?
Choose from one of our 12 newsletters that match your product area of interest, delivered monthly or quarterly to your inbox.

[Sign Up](#)