

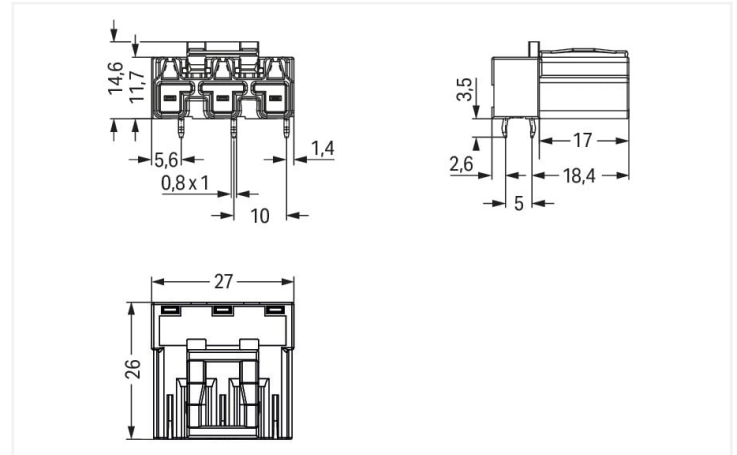
## Data Sheet | Item Number: 770-813/011-000

Plug for PCBs; angled; 3-pole; Cod. A; black

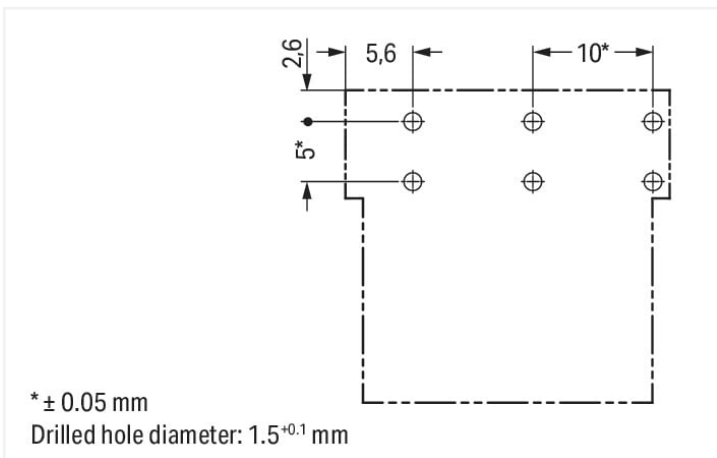
<https://www.wago.com/770-813/011-000>



Color: ■ black



Dimensions in mm



Dimensions in mm

Male connector/plug WINSTA® MIDI rated current 25 A

The WINSTA® MIDI male connector/plug A coding is economical and space thanks to its compact dimensions. The pluggable PCB connectors with spring pressure connection technology and Push-in CAGE CLAMP® technology from WAGO permit maintenance free terminal connections. For greater protection in electrical installations, the pcb connectors is provided with mechanical protection against mismatching. The WINSTA® MIDI pcb connectors with A coding in white or black is usually used for general mains applications in power distribution. This pcb connectors can be used for electrical currents up to 25 A. Thus the product is ideally suitable for high power loads. The WINSTA® MIDI Pluggable Connection System with Push-in CAGE CLAMP® spring pressure connection technology facilitates safe electrification. Due to the integrated test slot, connections can be checked even when they are plugged in. This saves time, labor, and money.

Lower costs through fast commissioning and elimination of service expenses – solutions from WINSTA® MIDI

The WINSTA® Pluggable Connection System allows pluggable electrical installation. This saves time, lowers costs, and reduces the need for servicing. Choose quality and durability – with protection against mismatching from WAGO makes the installation of electrical components substantially easier.

- pcb connectors with protection against mismatching
- pre-assembled versions
- with A coding for use in many general mains applications
- convenient installation and commissioning



Electrical data

Ratings per IEC/EN 60664-1				Approvals per UL 1977	
Overvoltage category	III	III	II	Rated voltage	600 V
Pollution degree	3	2	2	Rated current	23 A
Nominal voltage	250 V	-	-		
Rated surge voltage	4 kV	-	-		
Rated current	25 A	-	-		

General information	
Note on contact resistance	approx. 1 mΩ of contact resistance approx. 0.25 mΩ contact transition plug/ socket

Connection data

Total number of potentials	3	Connection 1	
Number of levels	1	Pole number	3
PE function	Preceding PE contact		

Physical data

Pin spacing	10 mm / 0.394 inches
Width	27 mm / 1.063 inches
Height	18.1 mm / 0.713 inches
Height from the surface	14.6 mm / 0.575 inches
Depth	26 mm / 1.024 inches
Solder pin length	3.5 mm
Solder pin dimensions	1 x 0.8 mm
Drilled hole diameter with tolerance	1.5 <sup>(-0.1 ... +0.1)</sup> mm

Mechanical data

Application	General mains applications
Coding	A
Variable coding	Yes
Marking	N L
Potential marking	N L
Mating force of a plug-in connection	approx. 20 ... 70 N (depending on pole number)
Retention force of a plug-in connection	Locked: > 80 N
Unmating force of a plug-in connection	Unlocked: approx. 20 ... 70 N (depending on pole number)
Number of mating cycles	200, without resistive load
Design	angled

Plug-in connection

Contact type (pluggable connector)	Male connector/plug
Connector (connection type)	for PCB
Mismating protection	Yes
Note on mismating protection	All WINSTA® components are 100% protected against mismating when: a.) plugging different numbers of poles b.) plugging while rotated 180 c.) plugging while laterally staggered d.) plugging one pole
Mating direction to the PCB	0 °
Locking lever	Yes
Locking of plug-in connection	Locking lever



Plug-in connection

Note on locking system	All connectors for mounted installations (snap-in versions for lighting fixtures or devices, all types of PCB and distribution connectors) are factory-equipped with locking levers to ensure plugs and sockets are securely locked. Additional locking levers are only required for flying leads (plug/socket).
------------------------	--

PCB contact

PCB contact	THT
Solder pin arrangement	2 in-line solder pins/pole
Number of solder pins per potential	2

Material data

Note (material data)	<a href="#">Information on material specifications can be found here</a>
Color	black
Insulation material	Polyamide (PA66)
Flammability class per UL94	V0
Clamping spring material	Chrome-nickel spring steel (CrNi)
Contact material	Copper or copper alloy; surface-treated
Contact plating	Tin
Fire load	0.18 MJ
Weight	6.6 g

Environmental requirements

Processing temperature	-5 ... +40 °C
Continuous operating temperature	-35 ... +85 °C
Note on continuous operating temperature	Insulating parts for temperatures ≤ 105 °C

Commercial data

eCl@ss 10.0	27-44-06-05
eCl@ss 9.0	27-44-06-05
ETIM 8.0	EC002560
PU (SPU)	100 pcs
Packaging type	Box
Country of origin	PL
GTIN	4044918524551
Customs tariff number	85366990990

Environmental Product Compliance

RoHS Compliance Status	Compliant,No Exemption
------------------------	------------------------



Approvals / Certificates

General approvals



Approval	Standard	Certificate Name
CCA DEKRA Certification B.V.	EN 61535	71-123228
CCA DEKRA Certification B.V.	IEC 61535	NL -84761
cURus Underwriters Laboratories Inc.	UL 1977	E45171
cURus Underwriters Laboratories Inc.	UL 1059	E 45172

Declarations of conformity and manufacturer's declarations

Approval	Standard	Certificate Name
EU-Declaration of Confor- mity WAGO GmbH & Co. KG	-	-

Approvals for marine applications



Approval	Standard	Certificate Name
ABS American Bureau of Ship- ping	-	19-HG1868589-PDA
DNV GL Det Norske Veritas, Ger- manischer Lloyd	-	TAE00001Z6
LR Lloyds Register	IEC 61984	LR22429487TA

Downloads

Environmental Product Compliance

Compliance Search
Environmental Product Compliance 770-813/011-000



CAD/CAE-Data

CAD data
2D/3D Models 770-813/011-000



CAE data
EPLAN Data Portal 770-813/011-000
ZUKEN Portal 770-813/011-000





1 Compatible Products

1.1 System counterpart

1.1.1 Cable assembly



**Item No.: 771-9993/106-101**  
pre-assembled connecting cable; Eca;  
Socket/open-ended; 3-pole; Cod. A;  
H05VV-F 3G 1.5 mm²; 1 m; 1,50 mm²;  
black



**Item No.: 771-9993/006-101**  
pre-assembled interconnecting cable;  
Eca; Socket/plug; 3-pole; Cod. A; H05VV-  
F 3G 1.5 mm²; 1 m; 1,50 mm²; black

1.1.2 Female connector/socket



**Item No.: 770-203**  
Socket; 3-pole; Cod. A; 4,00 mm²; black



**Item No.: 770-103**  
Socket; with strain relief housing; 3-pole;  
Cod. A; 4,00 mm²; black



**Item No.: 770-203/035-000**  
Socket; with strain relief housing; 3-pole;  
Cod. A; 4,00 mm²; black

1.2 Required Accessories

1.2.1 Cover

1.2.1.1 Cover



**Item No.: 770-360**  
Lockout cap; for plugs; 5-pole; separable;  
yellow

1.3 Optional Accessories

1.3.1 Coding

1.3.1.1 Coding



**Item No.: 770-401**  
Coding pin; for plugs; Plastic; gray