



**Part Number :** [2213920002](#)

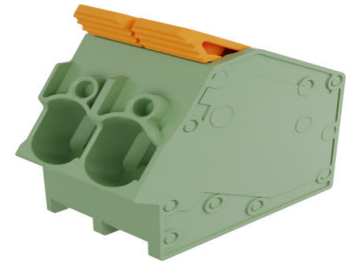
**Product Description :** 7.50mm Pitch Lever Activated Fixed Mount PCB Terminal Block, 35° Wire Entry, Left Rear Terminal, 2 Circuits

**Series Number :** 221392

**Status :** Active

**Product Category :** Terminal Blocks and Barrier Strip

**Engineering Part Number :** MX-TLM-405AA-02



---

## Documents and Resources

### Drawings

[2213920002\\_sd.pdf](#)

### 3D Models and Design Files

[STEP AP242](#)

[SOLIDWORKS](#)

[Creo](#)

[Symbol and Footprint \(Multi-Format\)](#)


### Specifications

[1302270418-000.pdf](#)

---

## Product Environment Compliance

### Compliance

GADSL/IMDS	Not Relevant
China RoHS	 per SJ/T 11365-2006
EU ELV	Not Relevant
Low-Halogen Status	Low-Halogen per IEC 61249-2-21
REACH SVHC	Not Contained per D(2025)7771-DC (04 Feb 2026)
EU RoHS	Compliant per EU 2015/863

### [Compliance Statements](#)

- EU RoHS
- REACH SVHC
- Low-Halogen

#### Industry Documents

- IPC 1752A Class C
- IPC 1752A Class D
- Molex Product Compliance Declaration
- IEC-62474
- chemSHERPA (xml)

#### Substances of Interest

- PFAS

#### EU RoHS Certificate of Compliance

#### Additional Product Compliance Information

## Part Details

### General

Status	Active
Category	Terminal Blocks and Barrier Strip
Series	221392
Description	7.50mm Pitch Lever Activated Fixed Mount PCB Terminal Block, 35° Wire Entry, Left Rear Terminal, 2 Circuits
Application	Wire-to-Board
Component Type	One Piece
Product Name	Lever Activated Fixed Mount
Type	PCB Terminal Blocks and Connectors
UPC	196823120763

### Electrical

Current - Maximum per Contact	38.0A
Voltage - Maximum	600V

### Physical

Circuits (Loaded)	2
Circuits (maximum)	2

Color - Resin	Green
Entry Angle	35° Angle
Lock to Mating Part	No
Material - Metal	Copper Alloy
Material - Plating Mating	Tin
Material - Plating Termination	Tin
Material - Resin	Polyamide (PA)
Net Weight	4.400/kg
Number of Rows	1
Orientation	Vertical
Panel Mount	No
PCB Thickness - Recommended	2.00mm
PC Tail Length	3.60mm
Pitch - Mating Interface	7.50mm
Pitch - Termination Interface	7.50mm
Polarized to Mating Part	N/A
Stackable	No
Temperature Range - Operating	-40° to +115°C
Termination Interface Style	Through Hole
Wire Size (AWG)	8, 10, 12, 14, 16, 18, 20, 22, 24
Wire Size mm <sup>2</sup>	0.38-3.73

---

This document was generated on May 14, 2026