

2-520183-4 ✓ ACTIVE

Ultra-Fast | Ultra-Fast 250

TE Internal #: 2-520183-4

Quick Disconnect Receptacle, Fully Insulated, 22 – 18 AWG, .32 – .82 mm² Wire, 6.35 mm [.25 in] Tab Width, F-Crimp, Straight, Ultra-Fast 250

[View on TE.com >](#)



Terminals & Splices > Quick Disconnects



Quick Disconnect Terminal Type: **Receptacle**

Wire Size: .32 – .82 mm²

Mating Tab Width: 6.35 mm [.25 in]

Mating Tab Thickness: .81 mm [.032 in]

Features

Product Type Features

| | |
|-------------------|-----------|
| Terminal Features | Wire Stop |
| Insertion Force | Normal |

Configuration Features

| | |
|-----------------------------------|---------------|
| Compatible With Wire & Cable Type | Discrete Wire |
| Connection Capacity | Single |

Electrical Characteristics

| | |
|----------------|-------|
| Voltage Rating | 600 V |
|----------------|-------|

Body Features

| | |
|---------------------|-------|
| Insulation Material | Nylon |
|---------------------|-------|

Contact Features

| | |
|--------------------------------|------------------|
| Quick Disconnect Terminal Type | Receptacle |
| Mating Tab Width | 6.35 mm [.25 in] |
| Mating Tab Thickness | .81 mm [.032 in] |
| Terminal Orientation | Straight |



| | |
|---------------------------|-----------------|
| Contact Base Material | Phosphor Bronze |
| Terminal Plating Material | Tin |
| Crimp Type | F-Crimp |
| Barrel Type | Closed |

Termination Features

| | |
|-----------------------|--------------|
| Product Terminates To | Wire & Cable |
|-----------------------|--------------|

Mechanical Attachment

| | |
|-------------------------|--------|
| Wire Insulation Support | With |
| Mating Retention Type | Dimple |

Dimensions

| | |
|--------------------------------------|---------------------------|
| Product Length | 21.75 mm[.856 in] |
| Compatible Insulation Diameter Range | 3.43 mm[.135 in] |
| Terminal Material Thickness | .41 mm[.016 in] |
| Wire Size | .32 – .82 mm ² |

Usage Conditions

| | |
|-----------------------------|----------------------------|
| Insulation Option | Fully Insulated |
| Operating Temperature Range | -40 – 110 °C[-40 – 230 °F] |

Industry Standards

| | |
|---|----------|
| Compatible With Agency/Standards Products | UL |
| UL Flammability Rating | UL 94V-2 |

Packaging Features

| | |
|--------------------|------------|
| Packaging Quantity | 2200 |
| Packaging Method | Strip/Reel |

Other

| | |
|--------------|-----|
| Barrel Color | Red |
|--------------|-----|

Product Compliance

For compliance documentation, visit the product page on [TE.com](https://www.te.com)>

| | |
|---|---|
| EU RoHS Directive 2011/65/EU | Compliant |
| EU ELV Directive 2000/53/EC | Compliant |
| China RoHS 2 Directive MIIT Order No 32, 2016 | 有害物质含量符合标准要求 No Restricted Substance(s) Above Threshold |



EU REACH Regulation (EC) No. 1907/2006

Current ECHA Candidate List: JUNE 2025 (250)

Candidate List Declared Against: JUNE 2025 (250)

Does not contain REACH SVHC

Halogen Content

Low Halogen - Br, Cl, F < 900 ppm per homogenous material. Also BFR/CFR/PVC Free

Solder Process Capability

Not applicable for solder process capability

Product Compliance Disclaimer

This information is provided based on reasonable inquiry of our suppliers and represents our current actual knowledge based on the information they provided. This information is subject to change. The part numbers that TE has identified as EU RoHS compliant have a maximum concentration of 0.1% by weight in homogenous materials for lead, hexavalent chromium, mercury, PBB, PBDE, DBP, BBP, DEHP, DIBP, and 0.01% for cadmium, or qualify for an exemption to these limits as defined in the Annexes of Directive 2011/65/EU (RoHS2). Finished electrical and electronic equipment products will be CE marked as required by Directive 2011/65/EU. Components may not be CE marked. Additionally, the part numbers that TE has identified as EU ELV compliant have a maximum concentration of 0.1% by weight in homogenous materials for lead, hexavalent chromium, and mercury, and 0.01% for cadmium, or qualify for an exemption to these limits as defined in the Annexes of Directive 2000/53/EC (ELV). Regarding the REACH Regulation, the information TE provides on SVHC in articles for this part number is based on the latest European Chemicals Agency (ECHA) 'Guidance on requirements for substances in articles' posted at this URL: <https://echa.europa.eu/guidance-documents/guidance-on-reach>

Compatible Parts

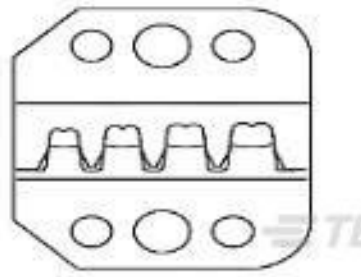


TE Part # 58078-3
TETRA CRIMP FRAME W/O DIES



KIT
REPRESENTATION ONLY

TE Part # 7-2151034-7
OCEAN_2_0_SPARE_PART_KIT-1760



TE Part # 58628-2
PROCRIMP DIESET 26-14 ULTRAFast



TE Part # 90390-3
DIES ULTRA-FAST FASTON 22-18 DIE SET

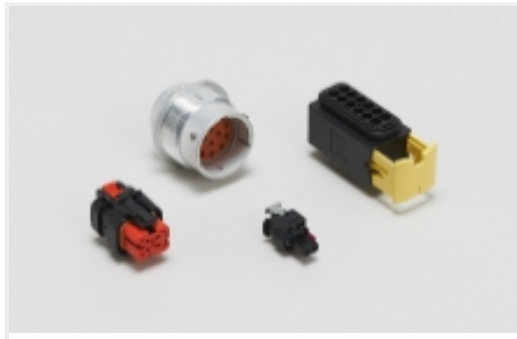


TE Part # 2151034-2
OCEAN_2_0_APPLICATOR-S-1760-SSA



TE Part # 58628-1
PROCRIMP T&D 26-14 ULTRAFast

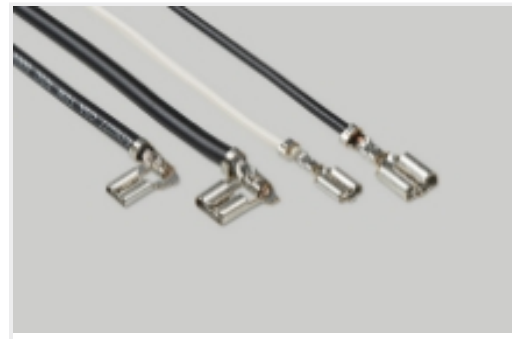
Also in the Series | **Ultra-Fast 250**



Automotive Housings(3)



Automotive Signal & Power Connector Housings(3)



Quick Disconnects(49)

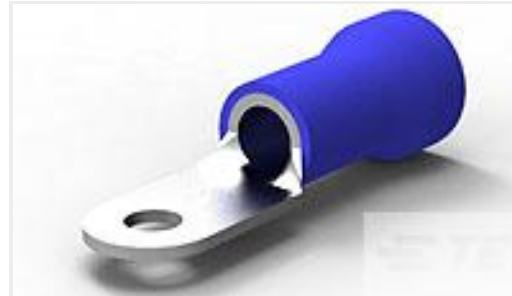
Customers Also Bought



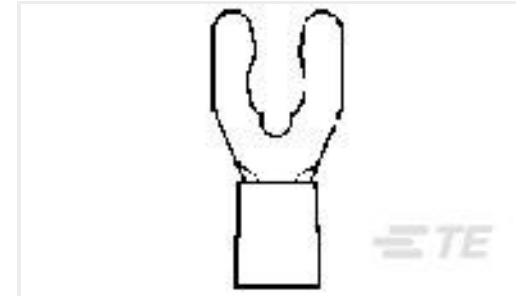
TE Part #2-34125-6
TERMINAL,SOLIS R 16-14 5/16



TE Part #34825
TERMINAL,PG R 16-14HD 5/16



TE Part #52265-3
TERMINAL R PG 6 10



TE Part #52951-3
PG SPR SPD 22-16COM22-18MIL 10



TE Part #60742-2
187 FASTON REC 18-14 AWG TPBR



TE Part #63596-2
187 FASTON REC 18-14 AWG TPBR



TE Part #2-520181-4
ULTRA-FAST 187 ASY REC 22-18 TPPB



TE Part #1462051-6
HF3 71 = 50OHM 70MW 3V BIST 1COIL



TE Part #7-1609097-8
16EQ1=F8365



TE Part #7-2176231-4
3522 11K 1% 3W

Documents

Product Drawings

[ULTRA-FAST 250 ASY REC 22-18 TPPB](#)

English

CAD Files

[3D PDF](#)

3D

Customer View Model

[ENG_CVM_CVM_2-520183-4_V.2d_dxf.zip](#)



English

Customer View Model

[ENG_CVM_CVM_2-520183-4_V.3d_igs.zip](#)

English

Customer View Model

[ENG_CVM_CVM_2-520183-4_V.3d_stp.zip](#)

English

By downloading the CAD file I accept and agree to the [Terms and Conditions](#) of use.

Datasheets & Catalog Pages

[Ultra-Fast and Ultra Fast Plus](#)

English

[Ultra-Fast_QRG](#)

English

Product Specifications

[Application Specification](#)

English

Agency Approvals

[UL](#)

English