



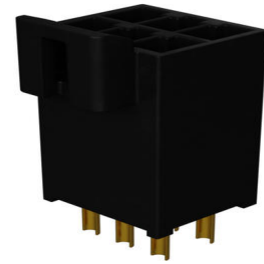
**Part Number :** [2248571061](#)

**Product Description :** Ultra-Fit Test Plug, Dual Row,  
6 Circuits

**Series Number :** 224857

**Status :** Active

**Product Category :** PCB Headers and Receptacles



---

## Documents and Resources

### Drawings

[2248571061\\_sd.pdf](#)

[2248571000-PK-000.pdf](#)

### 3D Models and Design Files

[STEP AP242](#)

[SOLIDWORKS](#)

[Creo](#)


### Specifications

[2248571000-PS-000.pdf](#)

---

## Product Environment Compliance

### Compliance

GADSL/IMDS	Not Relevant
China RoHS	 per SJ/T 11365-2006
EU ELV	Not Relevant
Low-Halogen Status	Low-Halogen per IEC 61249-2-21
REACH SVHC	Contains Lead per D(2025)6375-DC (05 Nov 2025) SCIP:6e7521d4-a8de-4f0b-890a-d66d6d7144eb
EU RoHS	Compliant with Exemption 6(c) per EU 2015/863

### Compliance Statements

- EU RoHS

- REACH SVHC
- Low-Halogen

#### Industry Documents

- IPC 1752A Class C
- IPC 1752A Class D
- Molex Product Compliance Declaration
- IEC-62474
- chemSHERPA (xml)

#### Substances of Interest

- PFAS

#### EU RoHS Certificate of Compliance

#### Additional Product Compliance Information

## Part Details

### General

Status	Active
Category	PCB Headers and Receptacles
Series	224857
Description	Ultra-Fit Test Plug, Dual Row, 6 Circuits
Application	Power, Wire-to-Board
Component Type	Test Plug
Product Name	Ultra-Fit
UPC	198282210559

### Electrical

Current - Maximum per Contact	2.5A
Voltage - Maximum	600V AC (RMS)

### Physical

Breakaway	No
Circuits (Loaded)	6
Circuits (maximum)	6
Color - Resin	Black
Durability (mating cycles max)	10000
First Mate / Last Break	No

Glow-Wire Capable	Yes
Lock to Mating Part	Yes
Material - Metal	Copper Alloy, Stainless Steel
Material - Plating Mating	Gold
Material - Plating Termination	Gold
Material - Resin	High Temperature Thermoplastic
Net Weight	3.220/g
Number of Rows	2
Orientation	Vertical
Packaging Type	Bag
PCB Locator	No
PCB Retention	None
PC Tail Length	4.30mm
Pitch - Mating Interface	3.50mm
Polarized to Mating Part	Yes
Polarized to PCB	No
Shrouded	Fully
Stackable	No
Temperature Range - Operating	-40° to +120°C
Termination Interface Style	Solder or Weld

---

## Mates With / Use With

### Mates with Part(s)

Description	Part Number
Ultra-Fit Tangless Single Row Receptacle Housings	<u>172256</u>
Ultra-Fit Tangless Dual Row Receptacle Housings	<u>172258</u>

---

This document was generated on Dec 25, 2025