

Flush-type connector - SACC-CI-M12MSD-4P SMD T



1411925

<https://www.phoenixcontact.com/us/products/1411925>

Please be informed that the data shown in this PDF document is generated from our Online Catalog. Please find the complete data in the user documentation. Our General Terms of Use for Downloads are valid.



Flush-type connector, 4-position, Plug, straight, M12, D-coded, PCB mounting, SMD

Your advantages

- Reduced mounting costs thanks to two-piece device connector
- Packaging available for automated pick and place assembly
- All common pin assignments and codings available
- Easy device integration thanks to mechanical port screw connections with threaded attachment, press-in contour or direct integration in the front plate
- Optional shield connection and seal for the device when not plugged in

Commercial Data

| | |
|--------------------------------------|--------------------------------|
| Item number | 1411925 |
| Packing unit | 1 pc |
| Minimum order quantity | 60 pc |
| Note | Made to Order (non-returnable) |
| Sales Key | A11 |
| Product Key | ABQCBJ |
| GTIN | 4046356990035 |
| Weight per Piece (including packing) | 3.865 g |
| Weight per Piece (excluding packing) | 3.865 g |
| Customs tariff number | 85366990 |
| Country of origin | DE |

Flush-type connector - SACC-CI-M12MSD-4P SMD T



1411925

<https://www.phoenixcontact.com/us/products/1411925>

Technical Data

Notes

| | |
|--------------------|--|
| Notes on operation | The electrical and mechanical data specified assume that the connector pair is correctly locked and mounted. If the connector is unlocked and if there is a danger of contamination, the connector must be sealed using a protective cap > IP54. Influences arising from litz wires, cables or PCB assembly must also be taken into consideration. |
|--------------------|--|

Product properties

| | |
|---------------------|----------------|
| Product type | Contact insert |
| Number of positions | 4 |
| Coding | D-coded |

Insulation characteristics

| | |
|----------------------|----|
| Overvoltage category | II |
| Degree of pollution | 3 |

Electrical properties

| | |
|-----------------------|----------------------------|
| Rated surge voltage | 2.5 kV |
| Contact resistance | $\leq 3 \text{ m}\Omega$ |
| Insulation resistance | $\geq 100 \text{ M}\Omega$ |
| Nominal voltage U_N | 250 V |
| Nominal current I_N | 4 A |

Material specifications

| | |
|--|------|
| Flammability rating according to UL 94 | V0 |
| Contact material | CuZn |
| Contact surface material | Au |
| Contact carrier material | PA |

Connector

| | |
|-----------------------------|-------|
| Insertion/withdrawal cycles | > 100 |
|-----------------------------|-------|

Connection 1

| | |
|-------------------|----------|
| Head design | Plug |
| Head cable outlet | straight |
| Head thread type | M12 |
| Coding | D-coded |

Environmental and real-life conditions

Ambient conditions

| | |
|--|--|
| Degree of protection (when plugged in) | IP67 (correctly plugged in and locked) |
| Degree of protection | IP67, when plugged in |
| Ambient temperature (operation) | -55 °C ... 105 °C (Plug / socket) |

Flush-type connector - SACC-CI-M12MSD-4P SMD T



1411925

<https://www.phoenixcontact.com/us/products/1411925>

| | |
|--|--|
| | -55 °C ... 105 °C (without mechanical actuation) |
|--|--|

Standards and regulations

| | |
|--------------------------|-----------------|
| M12 | |
| Standards/specifications | IEC 61076-2-101 |

Mounting

| | |
|---------------|--------------|
| Mounting type | PCB mounting |
|---------------|--------------|

Packaging specifications

| | |
|-------------------|-------------------|
| Type of packaging | Tray |
| Delivery state | with assembly pad |

Flush-type connector - SACC-CI-M12MSD-4P SMD T

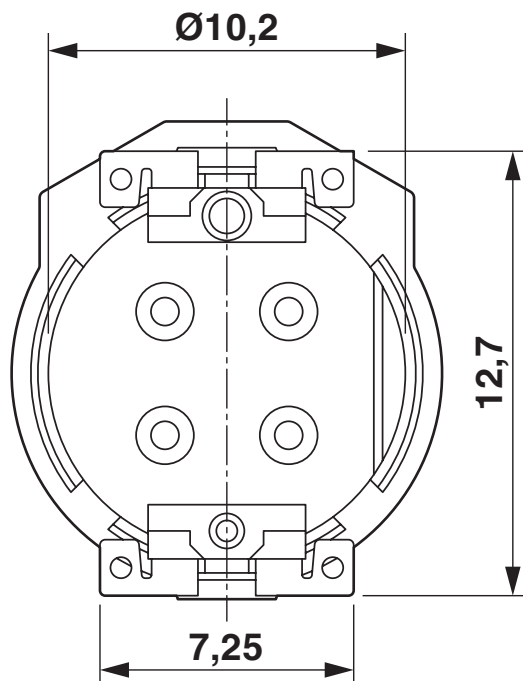
1411925

<https://www.phoenixcontact.com/us/products/1411925>



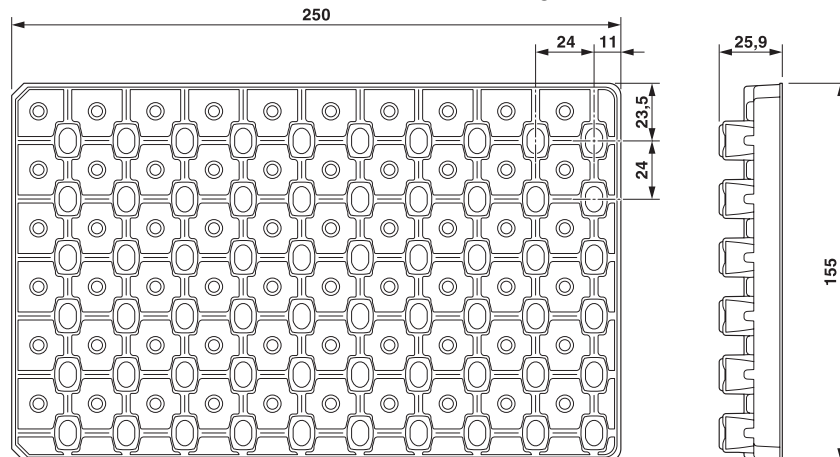
Drawings

Dimensional drawing



View of solder side

Dimensional drawing



SMD tray packaging

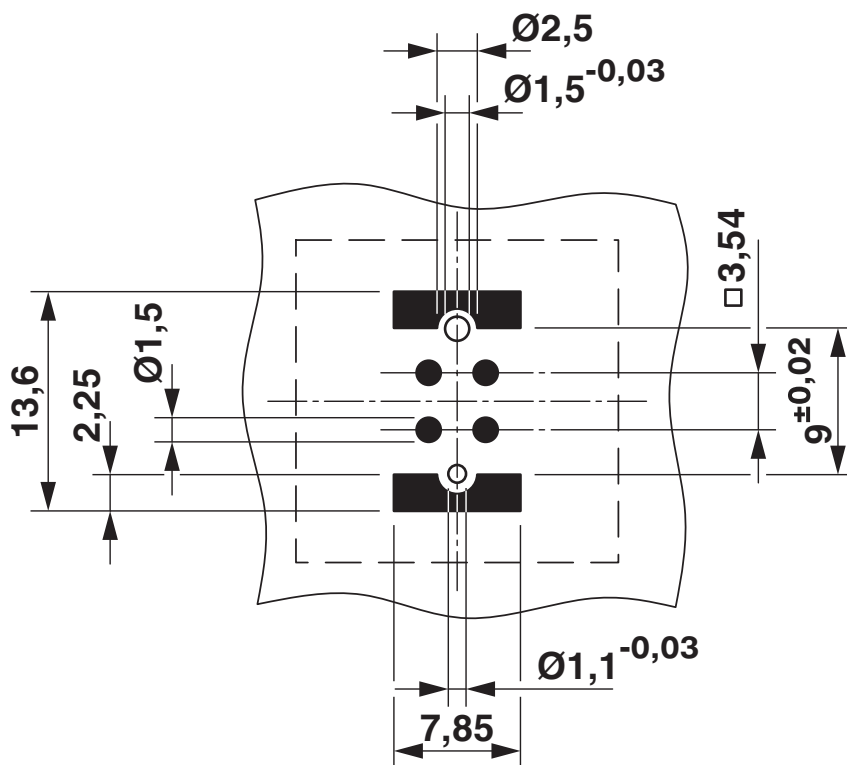
Flush-type connector - SACC-CI-M12MSD-4P SMD T



1411925

<https://www.phoenixcontact.com/us/products/1411925>

Drilling plan/solder pad geometry



Soldering pad geometry

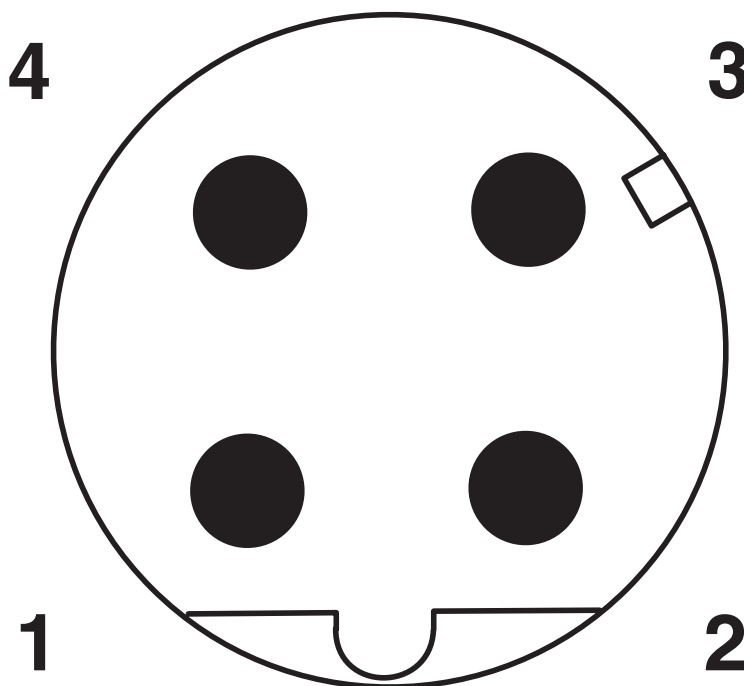
Flush-type connector - SACC-CI-M12MSD-4P SMD T



1411925

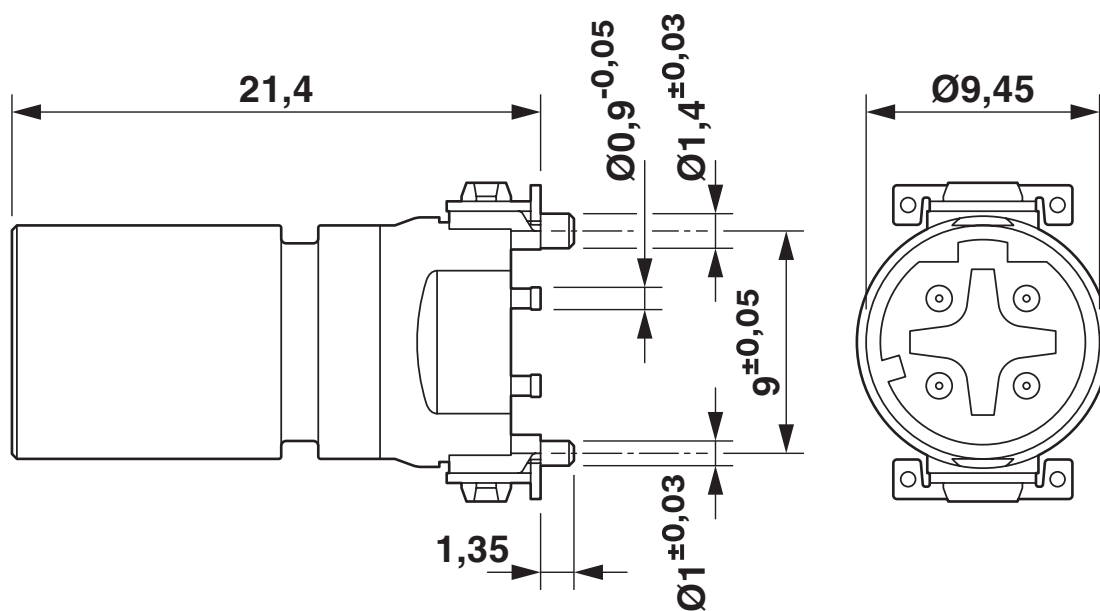
<https://www.phoenixcontact.com/us/products/1411925>

Schematic diagram



Pin assignment M12 male connector, 4-pos., D-coded, male side

Dimensional drawing



M12 male connector contact carrier


Flush-type connector - SACC-CI-M12MSD-4P SMD T




1411925

<https://www.phoenixcontact.com/us/products/1411925>

Approvals



EAC
Approval ID: B.01687

| | | | | |
|---|--|-----------------------|-------------------|-----------------------------|
|  | cULus Recognized Approval ID: E221474-20160506 | | | |
| | Nominal Voltage U_N | Nominal Current I_N | Cross Section AWG | Cross Section mm^2 |
| | 250 V | 4 A | - | - |

Flush-type connector - SACC-CI-M12MSD-4P SMD T



1411925

<https://www.phoenixcontact.com/us/products/1411925>

Classifications

ECLASS

| | |
|---------------|----------|
| ECLASS-9.0 | 27440102 |
| ECLASS-10.0.1 | 27440102 |
| ECLASS-11.0 | 27440102 |

ETIM

| | |
|----------|----------|
| ETIM 8.0 | EC002635 |
|----------|----------|

UNSPSC

| | |
|-------------|----------|
| UNSPSC 21.0 | 39121400 |
|-------------|----------|

Flush-type connector - SACC-CI-M12MSD-4P SMD T



1411925

<https://www.phoenixcontact.com/us/products/1411925>

Environmental Product Compliance

| | |
|------------|--|
| REACH SVHC | Lead 7439-92-1 |
| China RoHS | Environmentally Friendly Use Period = 50 years |
| | For information on hazardous substances, refer to the manufacturer's declaration available under "Downloads" |

Flush-type connector - SACC-CI-M12MSD-4P SMD T



1411925

<https://www.phoenixcontact.com/us/products/1411925>

Accessories

Housing screw connection

Housing screw connection - SACC-BP-M-M12/M15-6-SMD - 1414000

<https://www.phoenixcontact.com/us/products/1414000>

Housing screw connection, Plug, M12, Rear mounting, M15 x 1



Housing screw connection

Housing screw connection - SACC-BP-M-M12/M15-6-SMD SCO - 1414002

<https://www.phoenixcontact.com/us/products/1414002>

Housing screw connection, Plug, M12-SPEEDCON, Rear mounting, M15 x 1



Flush-type connector - SACC-CI-M12MSD-4P SMD T



1411925

<https://www.phoenixcontact.com/us/products/1411925>

Housing screw connection

Housing screw connection - SACC-FP-M-M12/M14 SMD - 1412078

<https://www.phoenixcontact.com/us/products/1412078>



Housing screw connection, Plug, M12, Front mounting, M14 x 1

Housing screw connection

Housing screw connection - SACC-FP-M-M12/PRESS SMD - 1412080

<https://www.phoenixcontact.com/us/products/1412080>



Housing screw connection, pin, for the two-part M12 SMD connector, for press-in mounting.

Flush-type connector - SACC-CI-M12MSD-4P SMD T



1411925

<https://www.phoenixcontact.com/us/products/1411925>

Housing screw connection

Housing screw connection - SACC-BP-M-M12-SMD PP - 1107993

<https://www.phoenixcontact.com/us/products/1107993>

Housing screw connection, Plug, M12-Push-Pull, Rear mounting, M15 x 1, SMD



Housing screw connection

Housing screw connection - SACC-FP-M-M12-SMD PP - 1107999

<https://www.phoenixcontact.com/us/products/1107999>

Housing screw connection, Plug, M12-Push-Pull, Front mounting, M14 x 1, SMD



Phoenix Contact 2022 © - all rights reserved
<https://www.phoenixcontact.com>

Phoenix Contact USA
586 Fulling Mill Road
Middletown, PA 17057, United States
(+717) 944-1300
info@phoenixcon.com