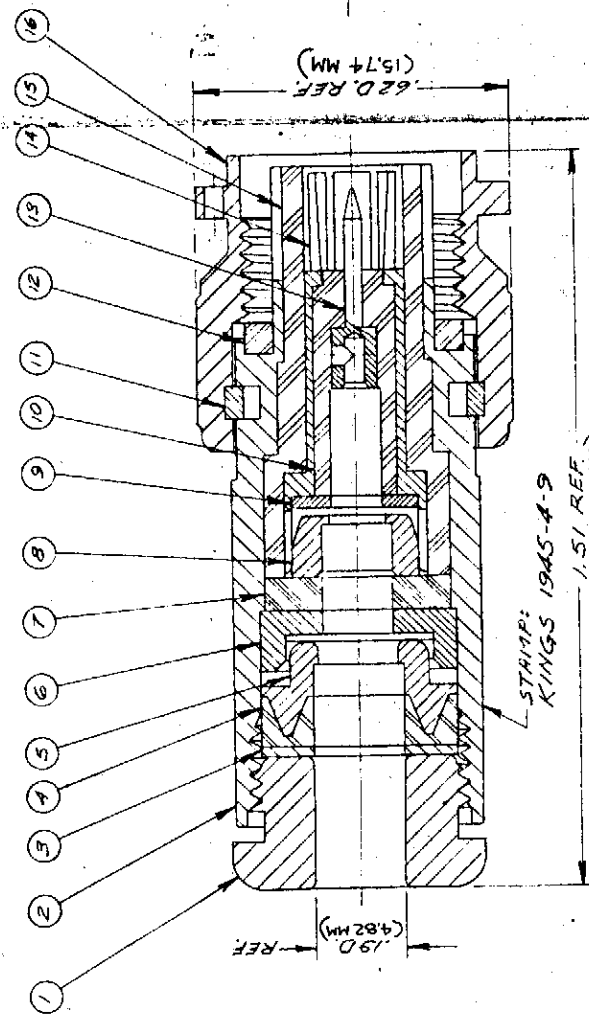
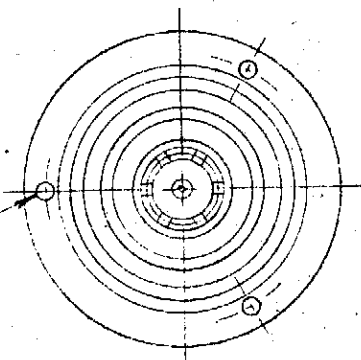


DASH NO.	DESCRIPTION	MADE FROM
----------	-------------	-----------



.04 D. REF 3 HOLE  
EQUALLY SPACED



NOTES:  
1. FOR USE WITH MICRODOT 293-3330 CABLE.  
2. FOR CABLING INSTRUCTIONS SEE CP-1301.

ITEM	REQ'D	DESCRIPTION	PART NO.
16	1	COUPLING NUT	
15	1	INSULATOR	
14	1	OUTER CONTACT	1-4896-3M9
13	1	TNC CONTACT M	
12	1	GASKET	
11	1	C-RING	
10	1	INSULATOR	C-19-88-17-M06
9	1	WASHER	1-1117-1M06
8	1	BRAID CLAMP	1-1118-1M99
7	1	INSULATOR	1-1119-1M06
6	1	RETAINER	C-19-88-4-M06
5	1	BRAID CLAMP	1055-1-M99
4	1	GASKET	C-19-88-3-M06
3	1	WASHER	
2	1	BODY	A-59-309-1-M06
1	1	CLAMP NUT	

UNLESS OTHERWISE SPECIFIED:  
1. TOLERANCES: FRACTIONS & 2 PLACE DECIMALS ± .010  
3 PLACE DECIMALS ± .004  
ANGLES ± 0° 30'  
T. I. R. CONCENTRICITY OF ANY 2 DIAMETERS MAY NOT EXCEED HALF THE SUM OF THEIR TOLERANCES.  
2. REMOVE ALL BURRS. BREAK SHARP EDGES .005 MAX.  
3. NO FILETS. ROUNDNESSES .43 MICRONS RMS MAX.  
4. SURF FINISHES .43 MICRONS RMS MAX.  
5. ALL DIMENSIONS PRIOR TO PLATING.

ISSUE	REVISIONS	CHANGER
0	ER 13942	3 DEC 74
1	MJB	3 DEC 74
1	CN 15911A	GA 15 JUL 76
2	CN 16130E	SA 29 JUL 76
3	CN 24945C	GJG 19 AUG 83
4	CN 28495 D	AJ 10 DEC 86
5	CN 31416 A	KH 23 FEB 90
6	CN 34639 C	KH 17 MAY 93

1945-4-9

S-D

S-D

USED ON:  
REF:  
FINISH: KER 10004  
MATERIAL:  
SPEC:  
TNC TRIAX PLUG  
DRAWN MJB DATE 21 NOV 74  
APPR. L.L. DATE 3 DEC 74

KINGS ELECTRONICS  
40 MARLBOROUGH ROAD  
TUCKAHOE, N. Y. 10707

1945-4-9

S-D