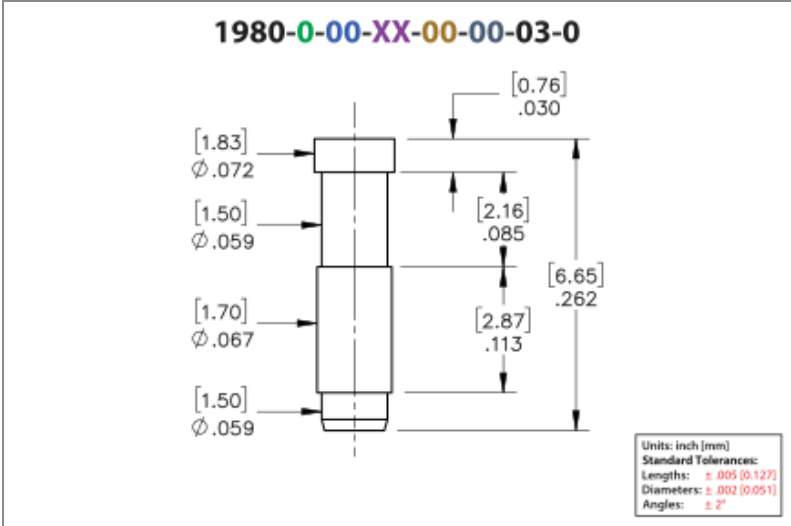




PRODUCT NUMBER: 1980-0-00-15-00-00-03-0

www.mill-max.com  
DATA SHEET



## 1980-0-00-15-00-00-03-0 SPECIFICATIONS

| General Info                     |   |
|----------------------------------|---|
| Description <sup>1</sup> :       | Flat Face Target Contact for Spring-Loaded Pins |
| Mounting Feature:                | Surface Mount                                   |
| Mounting Hole:                   | 0" (0,0mm)                                      |
| Packaging:                       | Packaged in Bulk                                |
| RoHS <sup>2</sup> :              | Yes   |
| Product Lifecycle <sup>3</sup> : | Active  |
| Country Of Origin:               | USA   |

| Materials  |
|--|
| Shell Material <sup>4</sup> : Brass Alloy                |
| Shell Plating <sup>5</sup> : 10 $\mu$ " Gold over Nickel |

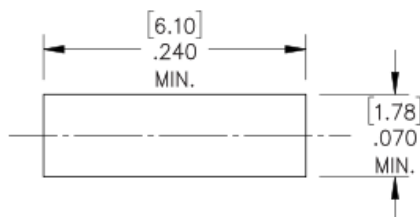
| Technical Specs                            |                      |
|--|----------------------|
| Operating Temperature Range <sup>6</sup> : | - 55/+125° C         |
| Maximum Current:                           | Application Specific |

## NOTES:

1. Standard Tolerances:  
Lengths  $\pm .005"$  (0,13)  
Diameters:  $\pm .002"$  (0,051)  
Angles:  $\pm 2^\circ$
2. Mill-Max products labeled with the RoHS symbol are compliant with all three ROHS Directives. All of our products previously described as RoHS (2002/95/EC) and RoHS-2 (2011/65/EC) are also compliant with RoHS-3 (2015/863/EU).
3. Part is Active and in Production, No Scheduled Obsolescence
4. Brass Alloy 360 per ASTM B 16, or 385 per ASTM B455
5. GOLD per ASTM B 488, Type 1 (99.7% min. gold), Code C (130-200 HK {Knoop hardness}), NICKEL per ASTM B 689, Type 2 (Bright)
6. Per IEC 60512-11-(4,-9,-10,-12)

## ADDITIONAL PARTS, PACKAGING, & ASSEMBLY INFO

### Suggested P.C.B. Footprint



## ADDITIONAL NOTES AND SPECIFICATIONS

In the interest of improved design, quality and performance, Mill-Max reserves the right to make changes in its specifications without prior notice. Specifications and tolerances are provided wherever possible. The tolerance on dimensions of critical to function features is typically held tighter than the stated standard tolerances, such as press-fits, holes and lengths affecting the coplanarity of SMT products. Due to the wide variety of interconnects Mill-Max offers, the specific tolerances vary from product to product. If you need information regarding the tolerance of a particular part, please contact Technical Services.

## RELATED LINKS AND DOCUMENTS

Environmental Compliance: ( <https://www.mill-max.com/rohs> )