



**Part Number :** [1731070920](#)

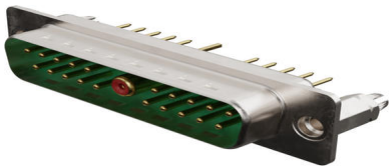
**Product Description :** FCT Mixed Layout D-Sub Connector, Male, Straight, PCB Through Hole, Gold Plating, Tin-plated Shell with Dimples, 8.10mm Snap-in Bolt, 21 Circuits Loaded (1 Coaxial, 20 Signal), Green Insulator

**Series Number :** 173107

**Status :** Active

**Product Category :** D-Sub Connectors

**Engineering Number :** FM21W1P22-1293



## Documents & Resources

### Drawings

[1731070920 sd.pdf](#)


[STEP AP242](#)

[SOLIDWORKS](#)

[Creo](#)

## Product Environment Compliance

### Compliance

GADSL/IMDS	Not Relevant
China RoHS	 per SJ/T 11365-2006
EU ELV	Not Relevant
Low-Halogen Status	Not Low-Halogen per IEC 61249-2-21
REACH SVHC	Contains Lead per D(2025)4165-DC (25 June 2025)
EU RoHS	Compliant with Exemption 6(c) per EU 2015/863

### Compliance Statements

- EU RoHS
- REACH SVHC
- Low-Halogen

## Industry Documents

- IPC 1752A Class C
- IPC 1752A Class D
- Molex Product Compliance Declaration
- IEC-62474
- chemSHERPA (xml)

## Substances of Interest

- PFAS

## EU RoHS Certificate of Compliance

## Additional Product Compliance Information

---

# Part Details

## General

Status	Active
Category	D-Sub Connectors
Series	173107
Description	FCT Mixed Layout D-Sub Connector, Male, Straight, PCB Through Hole, Gold Plating, Tin-plated Shell with Dimples, 8.10mm Snap-in Bolt, 21 Circuits Loaded (1 Coaxial, 20 Signal), Green Insulator
IP Rating	IP20
Magnetic	Yes
Product Name	FCT Products
Type	Mixed Layout
UPC	191130103973

## Electrical

Current - Maximum per Contact	7.5A, 2.0A
Shielded	Yes

## Physical

Circuits (Loaded)	21
Circuits (maximum)	21
Color - Resin	Green
Durability (mating cycles min)	500

Gender	Male
Material - Contact	Copper Alloy
Material - Resin	PBT
Material - Shell	Steel
Net Weight	12.600/g
Number of Rows	2
Orientation	Straight
Packaging Type	Carton
Panel Mount	Rear
Panel Mount Method	Thread-In
PCB Locator	Yes
PCB Retention	Yes
PC Tail Length	11.70mm
Pitch - Mating Interface	2.84mm
Pitch - Termination Interface	2.84mm
Plating - Contact	Gold over Nickel
Plating min - Mating	0.800µm
Plating min - Termination	0.800µm, 0.200µm
Plating - Shell	Tin
Polarized to Mating Part	Yes
Polarized to PCB	Yes
Ports	1
Temperature Range - Operating	-55° to +130°C
Termination Style	Through Hole
Waterproof / Dustproof	No
Waterproof / Dustproof Type	IP20

---

## Mates With / Use With

### Mates with Part(s)

Description	Part Number
Mates With	FCT Mixed Layout D-Sub, Size 3, 21W1, Socket