



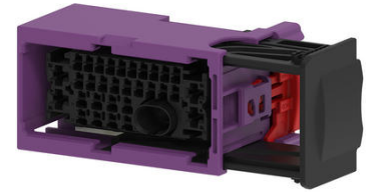
**Part Number :** [2159580338](#)

**Product Description :** MX-DaSH High-Speed MGE Female Connector Assembly, 31+1 Circuits, Keying Option Y, Purple

**Series Number :** 215958

**Status :** Active

**Product Category :** Connector Housings



---

## Documents and Resources

### Drawings

[2159580338\\_sd.pdf](#)

[2159580150-PK-000.pdf](#)

### 3D Models and Design Files

[STEP AP242](#)

[SOLIDWORKS](#)

[Creo](#)

### Specifications

[2159580000-AS-000.pdf](#)

[2159580000-PS-000.pdf](#)

---

## Product Environment Compliance

### Compliance

|                    |              |
|--------------------|--------------|
| China RoHS         | Not Reviewed |
| EU ELV             | Not Reviewed |
| Low-Halogen Status | Not Reviewed |
| REACH SVHC         | Not Reviewed |
| EU RoHS            | Not Reviewed |

### [Compliance Statements](#)

- EU RoHS
- REACH SVHC
- Low-Halogen

### [Industry Documents](#)

- IPC 1752A Class C
- IPC 1752A Class D
- Molex Product Compliance Declaration
- IEC-62474
- chemSHERPA (xml)

Substances of Interest

- PFAS

EU RoHS Certificate of Compliance

Additional Product Compliance Information

---

## Part Details

### General

|              |  |
|--------------|--|
| Status       | Active   |
| Category     | Connector Housings   |
| Series       | 215958   |
| Description  | MX-DaSH High-Speed MGE Female Connector Assembly, 31+1 Circuits, Keying Option Y, Purple |
| Application  | Power, Wire-to-Wire  |
| Product Name | MX-DaSH  |
| Type         | Static   |
| UPC          | 196823256806   |

### Physical

|                       |                    |
|-----------------------|--------------------|
| Circuits (maximum)    | 32                 |
| Color - Resin         | Purple             |
| Gender                | Receptacle         |
| Glow-Wire Capable     | No                 |
| Keying to Mating Part | Yes                |
| Lock to Mating Part   | Yes                |
| Material - Resin      | PBT                |
| Net Weight            | 26.120/g           |
| Number of Rows        | 4                  |
| Packaging Type        | Partitioned Carton |
| Panel Mount           | No                 |

|                               |                        |
|-------------------------------|------------------------|
| Pitch - Mating Interface      | 3.50mm, 2.75mm, 2.50mm |
| Polarized to Mating Part      | Yes                    |
| Stackable                     | No                     |
| Temperature Range - Operating | -40° to +125°C         |

---

## Mates With / Use With

### Mates with Part(s)

| Description  | Part Number       |
|--|-------------------|
| MX-DaSH High-Speed MGE Male Connector Assembly, 31+1 Circuits, Keying Option Y, Purple | <u>2159580448</u> |

### Use with Part(s)

| Description | Part Number                                     |
|-------------|---|
| Use With    | 1.20mm and 2.80mm AK Female Terminals, MGE Jack |

---

This document was generated on Dec 24, 2025