



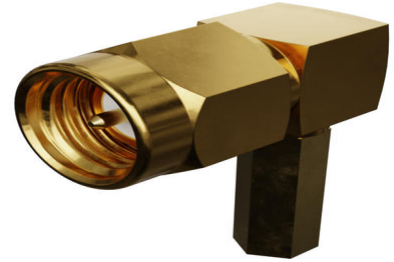
Part Number : [732512350](#)

Product Description : SMA Plug, Right-Angle, Crimp, FUJIKARA 1.5C--QEW-CW, Body Stainless Steel, Gold (Au) Plated, 50 Ohms

Series Number : 73251

Status : Active

Product Category : RF / Coaxial Connectors



Documents and Resources

Drawings

[732512350 sd.pdf](#)

3D Models and Design Files

[STEP AP242](#)

[SOLIDWORKS](#)

[Creo](#)

Product Environment Compliance

Compliance

GADSL/IMDS	Not Relevant
China RoHS	Not Relevant
EU ELV	Not Relevant
Low-Halogen Status	Not Low-Halogen per IEC 61249-2-21
REACH SVHC	Not Contained per ED/01/2017 (12 January 2017)
EU RoHS	Compliant with Exemption 6(c) per EU 2015/863

Compliance Statements

- EU RoHS
- REACH SVHC
- Low-Halogen

Industry Documents

- IPC 1752A Class C

- IPC 1752A Class D
- Molex Product Compliance Declaration
- IEC-62474
- chemSHERPA (xml)

Substances of Interest

- PFAS

EU RoHS Certificate of Compliance

Additional Product Compliance Information

Part Details

General

Status	Active
Category	RF / Coaxial Connectors
Series	73251
Description	SMA Plug, Right-Angle, Crimp, FUJIKARA 1.5C--QEW-CW, Body Stainless Steel, Gold (Au) Plated, 50 Ohms
Application	RF
Product Name	SMA
Style	Cable
Type	Subminiature
UPC	822348563173

Electrical

Frequency	18 GHz
Impedance	50Ω
Power / Voltage	VOLTAGE: 500 Vrms@Sea Level

Physical

Cable Attachment	Crimp
Gender	Plug
Keying to Mating Part	N/A
Net Weight	4.899/g
Orientation	Right Angle
Packaging Type	Tray

Panel Mount	No
Panel Mount Method	N/A
PCB Mounting	N/A
Reverse Polar	No
Wire/Cable Type	RG-316 Double Shielded

This document was generated on Apr 15, 2026