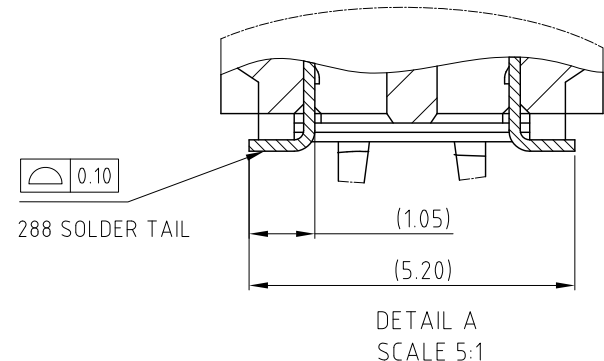
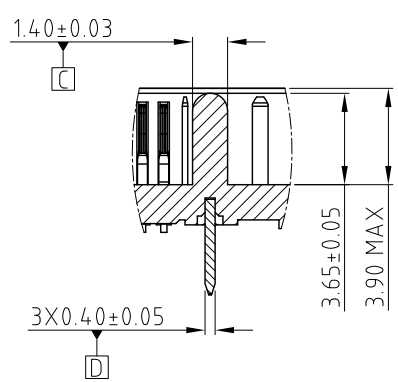
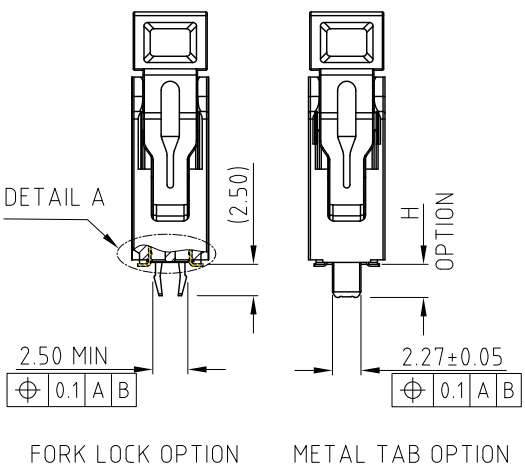
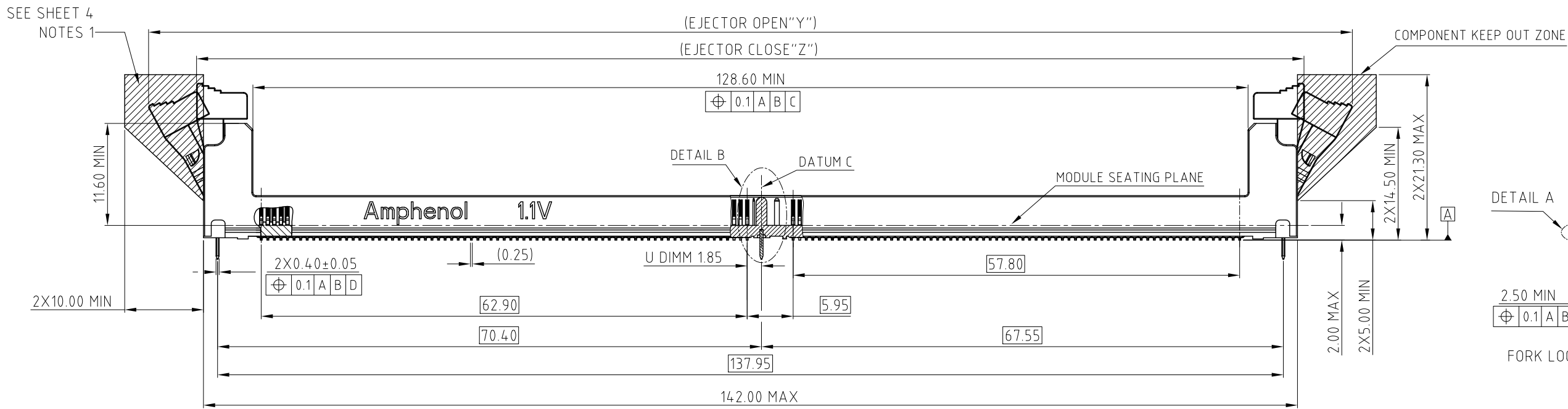
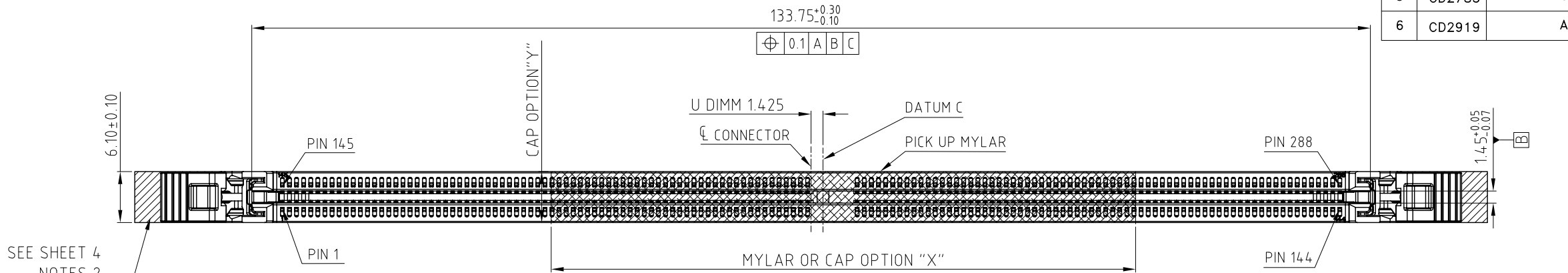


CUSTOMER DRAWING

REVISIONS				
SYM	ECN	DESCRIPTION	DATE	APPROVED
4	CD2651	CHANGE THE RECOMMENDED STENCIL THICKNESS FROM NOT LESS THAN 0.15MM TO 0.18MM	May.28,2021	YH
5	CD2785	UPDATE THE PACKING TRAY	Aug.05,2021	YH
6	CD2919	ADD 123.6MM MYLAR OPTION	Dec.02,2021	YH



ITEM	EJECTOR OPEN DIMENSION "Y"	EJECTOR CLOSE DIMENSION "Z"	EJECTOR FIGURE
STANDARD LATCH	156.00	144.00	

UNLESS OTHERWISE SPECIFIED
TOLERANCES
U.S. METRIC
.X +/- 0.35
.XX +/- 0.25
.XXX +/- 0.15
FRACTIONS +/-
ANGLES +/- 3°
FOR MATERIALS AND FINISHES
SEE NOTES
REMOVE SHARP EDGES
DIMENSIONS
U.S. INCHES
(METRIC) (MM)

APPROVAL
DRAWN Kellen.Yang
CHECKED
CHECKED
DATE
Dec.02,2021
DRAWING FILE :
DRAWING\DDR\CDDR503XXXXXXX

ANGLE OF PROJECTION

Amphenol

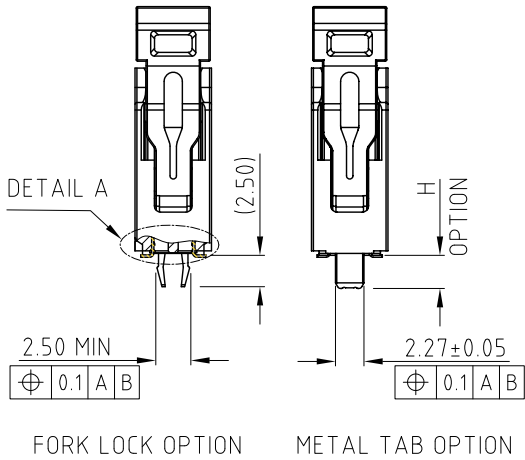
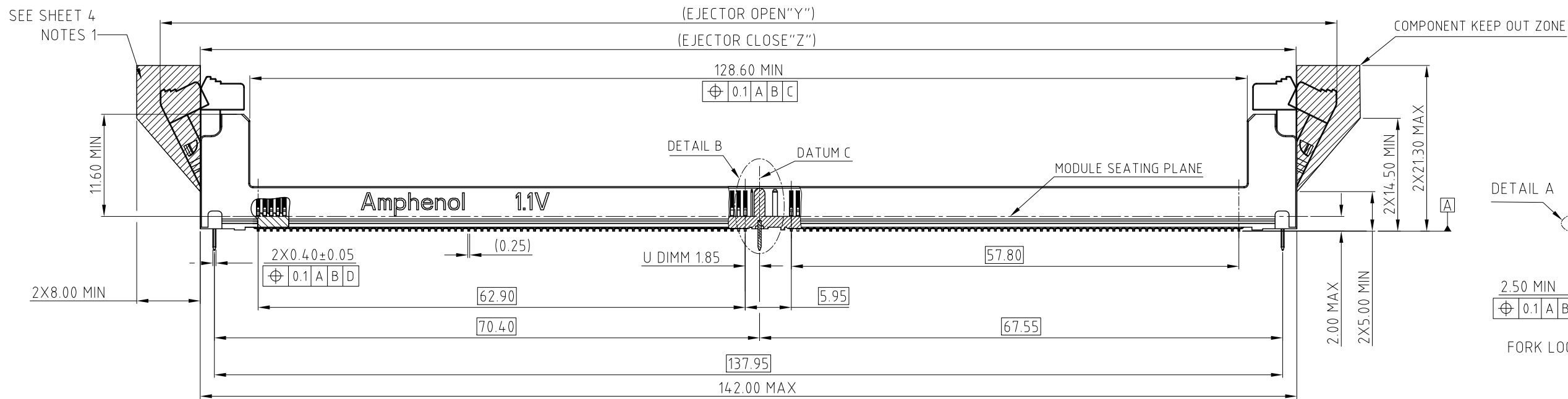
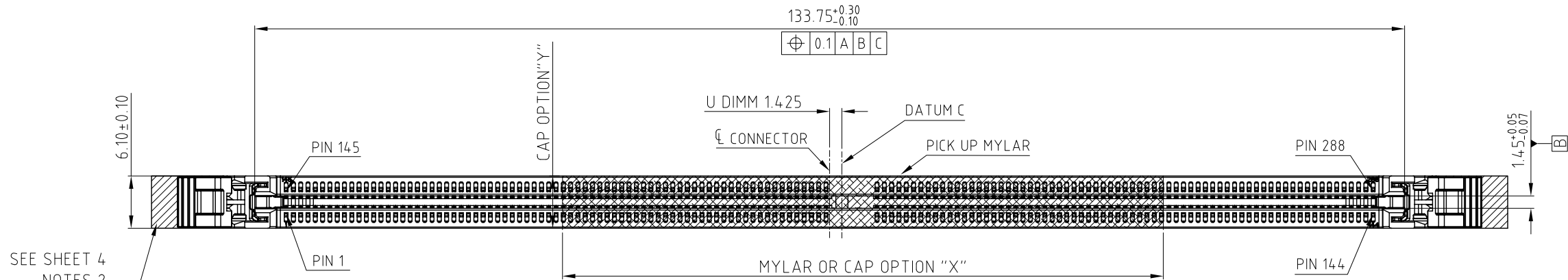
TITLE
DDR5 288P U DIMM CONNECTOR

SIZE A3
DRAWING NO. C DDR5-03-X-X-X-XXX-X-X
SCALE NONE
SHEET 1 OF 6

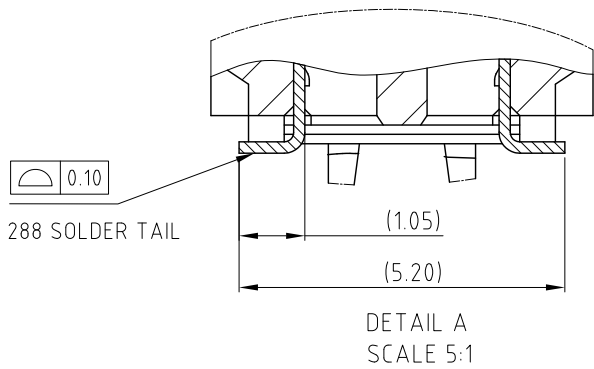
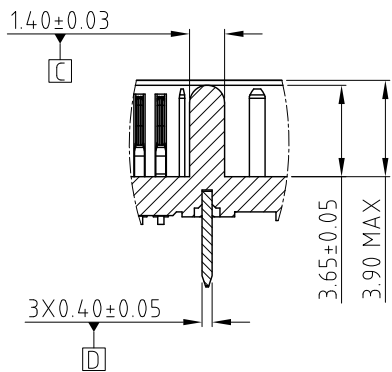
REV.
6

CUSTOMER DRAWING

REVISIONS				
SYM	ECN	DESCRIPTION	DATE	APPROVED
		SEE SHEET1		



ITEM	EJECTOR OPEN DIMENSION "Y"	EJECTOR CLOSE DIMENSION "Z"	EJECTOR FIGURE
SHORT LATCH	152.00	142.00	

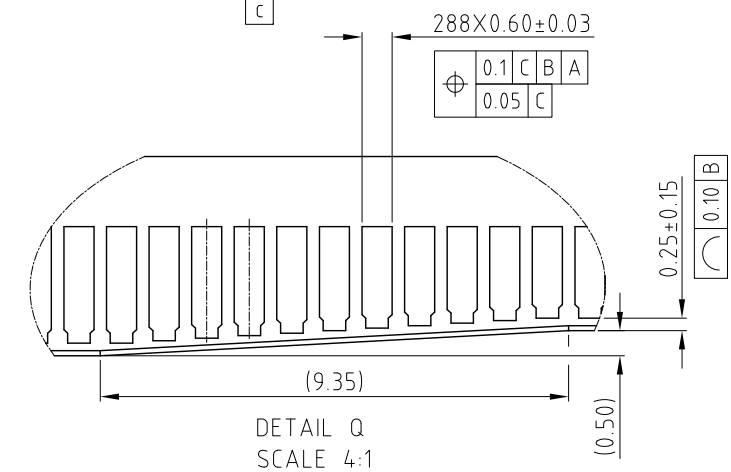
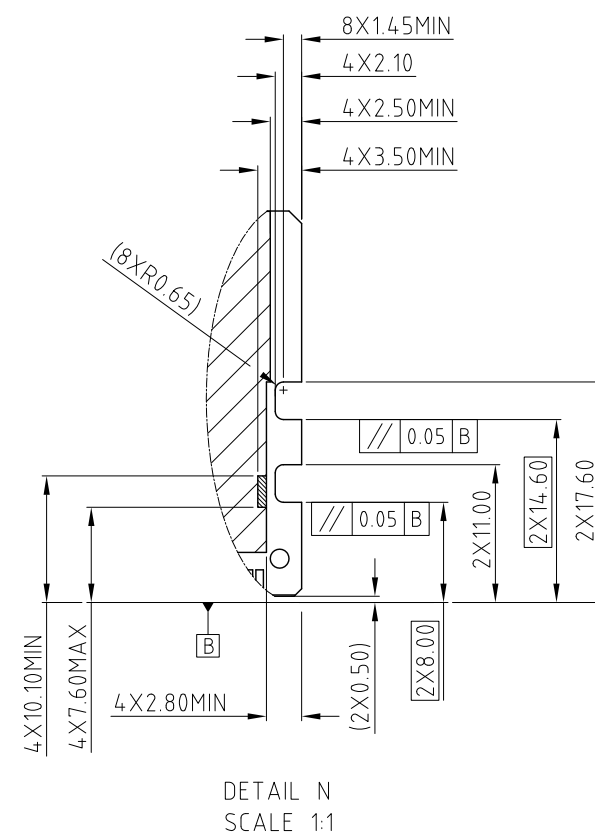
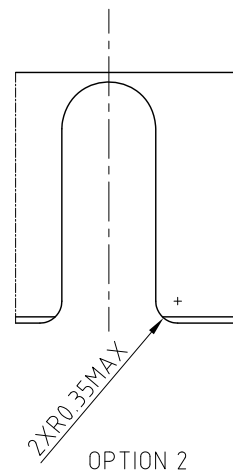
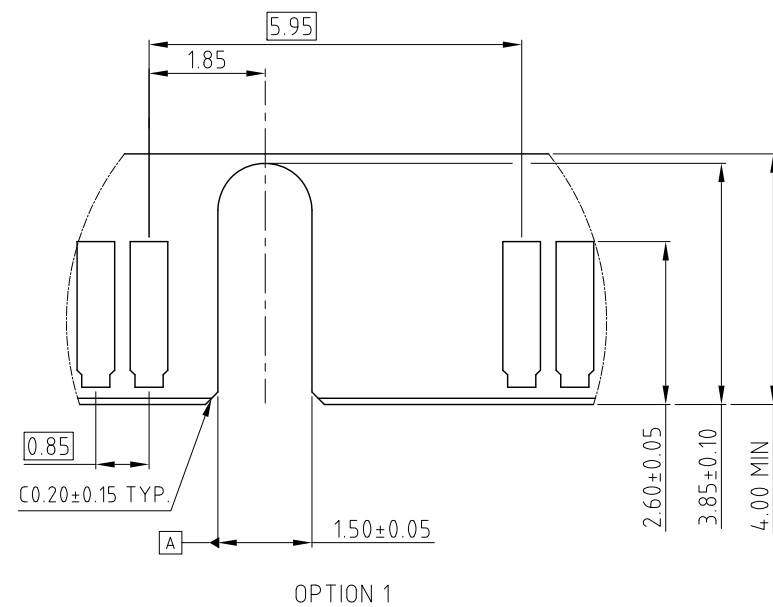
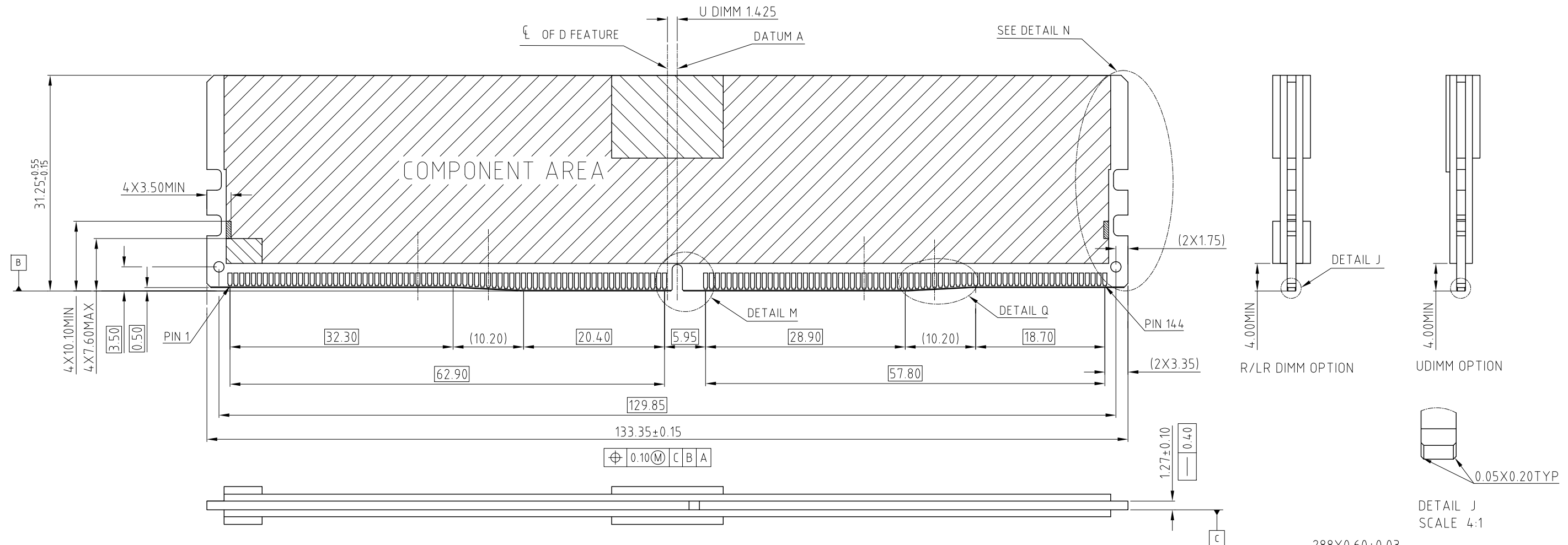


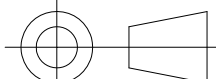
UNLESS OTHERWISE SPECIFIED TOLERANCES		APPROVAL		DATE		Amphenol	
U.S.	METRIC	DRAWN	Kellen.Yang	Dec.02,2021			
.X +/-	0.35	CHECKED				TITLE	
.XX +/-	0.25	CHECKED					
.XXX +/-	0.15					DDR5 288P U DIMM CONNECTOR	
FRACTIONS +/-	3°						
ANGLES +/-						SIZE	
FOR MATERIALS AND FINISHES SEE NOTES		DRAWING FILE :		DRAWING\DDR\CDDR503XXXXXXX		DRAWING NO.	
REMOVE SHARP EDGES		ANGLE OF PROJECTION				REV.	
DIMENSIONS						A3 C	
U.S.	INCHES					SCALE	
(METRIC)	(MM)					NONE	
						SHEET 2 OF 6	



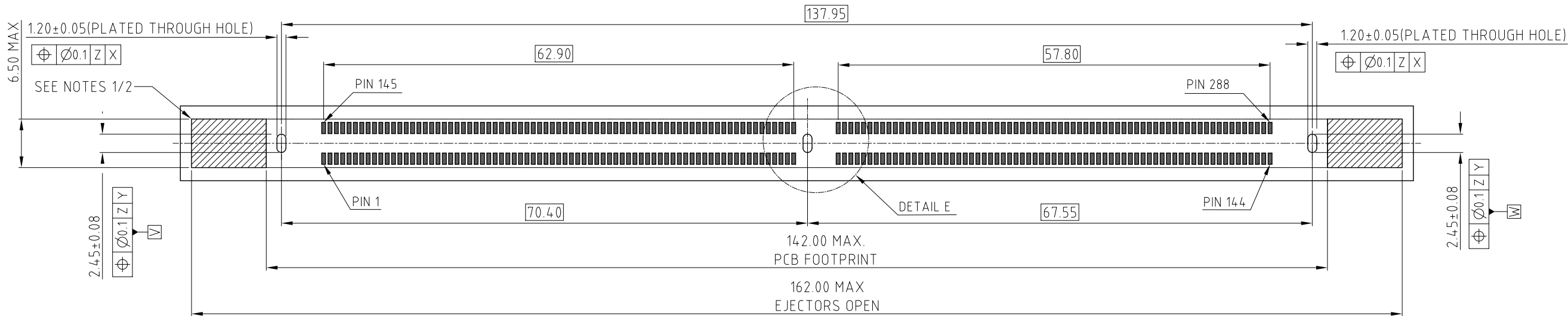
REVISIONS				
SYM	ECN	DESCRIPTION	DATE	APPROVED
		SEE SHEET1		

DDR5 MODULE
MORE INFORMATION REFER TO JEDEC MO-329




UNLESS OTHERWISE SPECIFIED TOLERANCES		APPROVAL		DATE		Amphenol					
U.S. METRIC		DRAWN	Kellen.Yang	Dec.02,2021							
.X +/- 0.35		CHECKED									
.XX +/- 0.25		CHECKED									
.XXX +/- 0.15						TITLE DDR5 288P U DIMM CONNECTOR					
FRACTIONS +/-											
ANGLES +/- 3°											
FOR MATERIALS AND FINISHES SEE NOTES											
REMOVE SHARP EDGES		DRAWING FILE :		SIZE A3				DRAWING NO. C DDR5-03-X-X-X-XXX-X-X		REV. 6	
DIMENSIONS		DRAWING\DDR\CDDR503XXXXXXXXXX									
— U.S. —		ANGLE OF PROJECTION									
(METRIC)											
— INCHES —				SCALE		NONE		SHEET 3 OF 6			
(MM)											

REVISIONS				
SYM	ECN	DESCRIPTION	DATE	APPROVED
		SEE SHEET1		



REFLOW CONDITION	THICKNESS OF STENCIL
AIR	0.18MM MIN
NITROGEN	0.18MM MIN
REWORK	0.20MM MIN

[illegible]

APPROVAL		DATE
DRAWN	Kellen.Yang	Dec.02,2021
CHECKED		
CHECKED		
DRAWING FILE : DRAWING\DDR\CDDR503XXXXXXX		
ANGLE OF PROJECTION		
		

Amphenol

TITLE

DDR5 288P U DIMM CONNECTOR

SIZE	DRAWING NO.	REV.
A3	C DDR5-03-X-X-X-XXX-X-X	6
SCALE	NONE	SHEET 4 OF 6

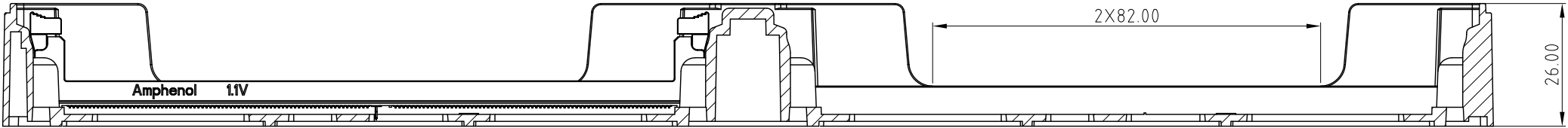
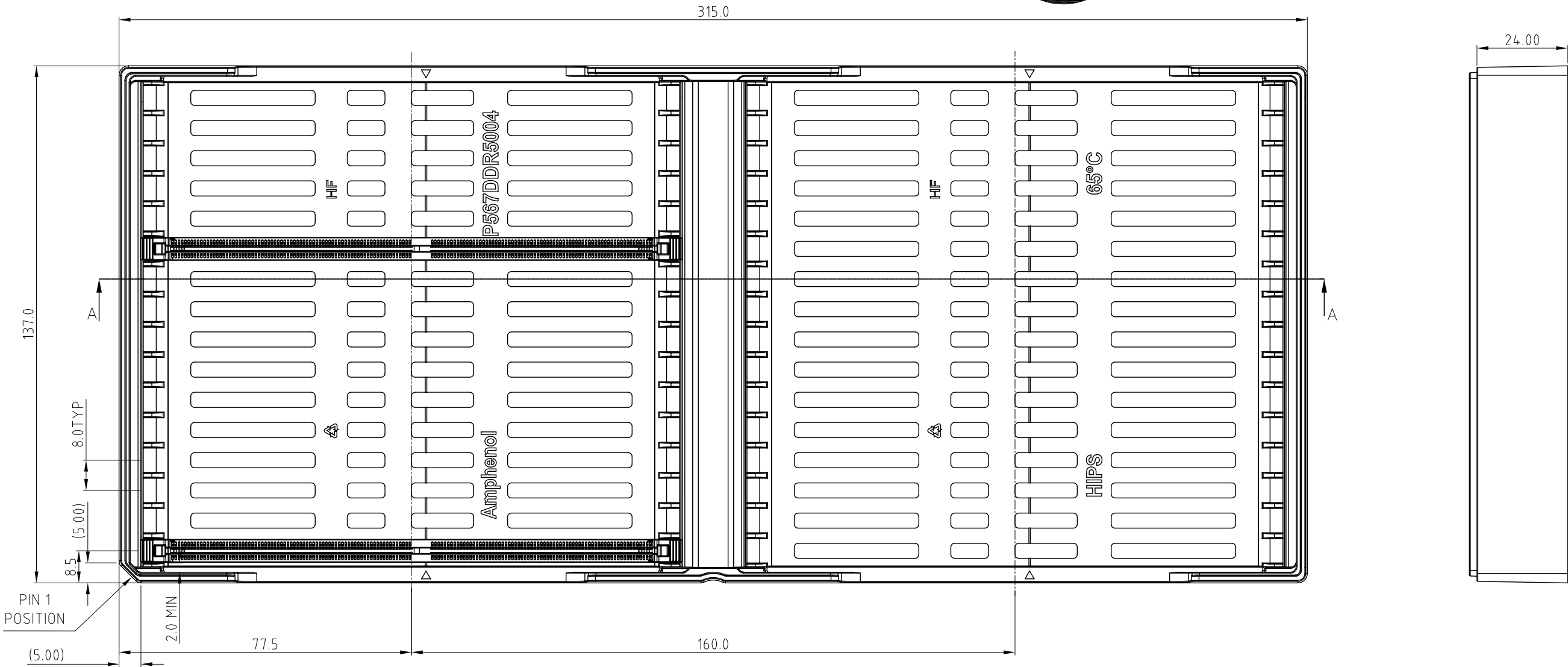
This document is the property of Amphenol Corporation and is delivered on the express condition that it is not to be disclosed, reproduced or used, in whole or in part, for manufacture or sale by anyone other than Amphenol Corporation without its prior consent, & that no right is granted to disclose or to use any information in this document.

CUSTOMER DRAWING



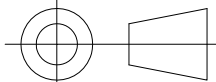
REVISIONS				
SYM	ECN	DESCRIPTION	DATE	APPROVED
		SEE SHEET1		

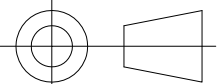
PACKING TRAY DRAWING



SECTION A-A

- NOTES:
1. MATERIAL: HIPS, BLACK
 2. QUANTITY:32PCS/TRAY

UNLESS OTHERWISE SPECIFIED TOLERANCES		APPROVAL		DATE	Amphenol	
U.S. METRIC		DRAWN	Kellen.Yang	Dec.02,2021		
.X +/-		CHECKED			TITLE	
.XX +/-		CHECKED				
.XXX +/-					DDR5 288P U DIMM CONNECTOR	
FRACTIONS +/-						
ANGLES +/-		DRAWING FILE : DRAWING\DDR\CDDR503XXXXXXXXXX			SIZE DRAWING NO. REV.	
FOR MATERIALS AND FINISHES SEE NOTES						
REMOVE SHARP EDGES		ANGLE OF PROJECTION			A3 C DDR5-03-X-X-X-XXX-X-X 6	
DIMENSIONS						
— U.S. —					INCHES	
(METRIC)		(MM)		SCALE NONE		SHEET 5 OF 6



This document is the property of Amphenol Corporation and is delivered on the express condition that it is not to be disclosed, reproduced or used, in whole or in part, for manufacture or sale by anyone other than Amphenol Corporation without its prior consent, & that no right is granted to disclose or to use any information in this document.

CUSTOMER DRAWING

REVISIONS

SYM	ECN	DESCRIPTION	DATE	APPROVED
		SEE SHEET1		

NOTES:

1. MATERIAL:
 - 1.1 HOUSING: HIGH TEMPERATURE THERMAL PLASTIC, UL94V-0, COLOR:OPTION.
 - 1.2 LATCH: HIGH TEMPERATURE THERMAL PLASTIC, UL94V-0. COLOR: OPTION.
 - 1.3 TERMINAL: COPPER ALLOY.
 - 1.4 BOARDLOCK: COPPER ALLOY.
 - 1.5 METAL CLIP: SUS.
2. FINISH:
 - 2.1 TERMINAL:
 - 2.1.1 CONTACT AREA: SELECTED GOLD PLATING;
 - 2.1.2 SOLDERING AREA: MATTE TIN PLATING 100u"THICKNESS MIN;
UNDER PLATING: NICKEL PLATING 50u" THICKNESS MIN. UNLESS OTHERWISE SPECIFIED
 - 2.2 BOARDLOCK:
 - 2.2.1 100u" MIN LEAD FREE MATTE TIN OVER 50u" MIN NICKEL UNDERPLATED OVERALL.
3. ELECTRICAL CHARACTERISTICS:
 - 3.1 CONTACT CURRENT RATING:1.0A MAX
 - 3.2 INSULATION RESISTANCE:1MΩ MIN. 500ADC.
 - 3.3 DIELECTRIC WITHSTANDING VOLTAGE:500 VAC AT SEA LEVEL.
 - 3.4 LOW LEVEL CONTACT RESISTANCE:
INITIAL:40mΩ MAX.
FINAL:THE CHANGE IN LLCR BETWEEN THE READING AFTER STRESS AND
THE INITIAL READING SHALL NOT EXCEED 20 mΩ MAX.
4. MECHANICAL CHARACTERISTICS:
 - 4.1 CONTACT RETENTION FORCE:300gF MIN/PER PIN.
 - 4.2 DURABILITY:25 CYCLES.
 - 4.3 INSERTION FORCE (MODULE TO CONNECTOR) :106.8N MAX.
UNMATING FORCE :19.77N MIN.
5. RELIABILITY AND OTHER CHARACTERISTICS:
 - 5.1 SOLDERABILITY -LEAD FREE: JESD22-B102; CONDITION C, 8 HOURS ±15 MINUTES STEAM PRECONDITION.
 - 5.2 VIBRATION: EIA-364-28, RANDOM PROFILE:
5 HZ @ 0.01 g²/HZ TO 20HZ @ 0.02g²/HZ (SLOPE UP), 20 HZ TO 500HZ @ 0.02g²/HZ (FLAT),
INPUT ACCELERATION IS 3.13g RMS.
 - 5.3 CYCLIC TEMPERATURE AND HUMIDITY: PER EIA-364-31, METHOD III WITHOUT CONDITIONING,
INITIAL MEASUREMENTS, COLD SHOCK AND VIBRATION.
 - 5.4 THERMAL SHOCK: PASSED PER EIA-364-32, METHOD A, TABLE 2, TEST CONDITION 1,
-55°C TO 85°C. PERFORM 5 CYCLES IN MATED CONDITION.
 - 5.5 MECHANICAL SHOCK: EIA-364-27, TEST CONDITION E,
 - 5.6 OPERATING TEMPERATURE: -55°C TO 85°C.
6. HALOGEN-FREE COMPLIANT PRODUCT. MEET AMPHENOL SPEC # S-SN-004.
7. ORDER PN SYSTEM: DDR5 XX X X X XXX X X

DOUBLE DATA RATE 5 SERIES

```
XX: APPLICATION TYPE
03: SMT,288P, UDIMM CONNECTOR
```

X:	HOUSING COLOR
1:	BLACK
2:	NATURAL (IVORY)
3:	YELLOW
4:	BLUE

X: LATCH COLOR
1: BLACK
2: NATURAL (IVORY)
3: YELLOW
4: BLUE

X:	CONTACT PLATED	SEE SEQUENCE
0:	GOLD FLASH	
1:	15u" Au ON CONTACT AREA	
2:	30u" Au ON CONTACT AREA	
3:	15u" MIN GXT	
4:	30u" MIN GXT	
5:	15u" Au ON CONTACT AREA AND 90u" Ni MIN ON UNDERPLATING:	
6:	30u" Au ON CONTACT AREA AND 90u" Ni MIN ON UNDERPLATING:	
8:	18u" AU ON CONTACT AREA	

X: CUSTOMER CODE OPTION:
BLANK
0.....
9
A.....
Z

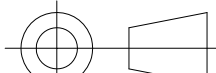
X: PACKING AND MYLAR OPTIONS
T: SOFT TRAY
H: HARD TRAY PACKAGE, WITH MYLAR "X"=40MM
J: HARD TRAY PACKAGE, WITH MYLAR "X"=70MM
K: HARD TRAY PACKAGE, WITHOUT MYLAR
M: HARD TRAY PACKAGE, WITH MYLAR "X"=90MM
C: HARD TRAY PACKAGE, WITH CAP "X"=70MM; "Y"=6MM
S: HARD TRAY PACKAGE, WITH MYLAR "X"=123.6MM

SEE SEQUENCE NUMBER TABLE

SEQUENCE NUMBER		
CODE	OPTION DESCRIPTION	FIGURE DIM "H"
001	1. STANDARD HOUSING 2. STANDARD LATCH 3. FORK LOCK	
002	1. STANDARD HOUSING 2. STANDARD LATCH 3. METAL TAB	
003	1. STANDARD HOUSING 2. STANDARD LATCH 3. ONE FORK LOCK IN MIDDLE, TWO TABS ON BOTH SIDES	
004	1. STANDARD HOUSING 2. SHORT LATCH 3. ONE FORK LOCK IN MIDDLE, TWO TABS ON BOTH SIDES	
005	1. STANDARD HOUSING 2. SHORT LATCH 3. FORK LOCK	
006	1. STANDARD HOUSING 2. SHORT LATCH 3. METAL TAB	
007	1. STANDARD HOUSING 2. STANDARD LATCH 3. METAL TAB	
008	1. STANDARD HOUSING 2. SHORT LATCH 3. METAL TAB	

SEQUENCE NUMBER		
CODE	OPTION DESCRIPTION	FIGURE DIM "H"
009	1. STANDARD HOUSING 2. STANDARD LATCH 3. ONE FORK LOCK IN MIDDLE, TWO TABS ON BOTH SIDES	
010	1. STANDARD HOUSING 2. SHORT LATCH 3. ONE FORK LOCK IN MIDDLE, TWO TABS ON BOTH SIDES	
.....		



UNLESS OTHERWISE SPECIFIED TOLERANCES		APPROVAL		DATE		Amphenol	
U.S. METRIC		DRAWN	Kellen.Yang	Dec.02,2021			
.X +/- 0.35		CHECKED				TITLE DDR5 288P U DIMM CONNECTOR	
.XX +/- 0.25		CHECKED					
.XXX +/- 0.15							
FRACTIONS +/-		DRAWING FILE :				<div> <div>SIZE</div> <div>DRAWING NO.</div> <div>REV.</div> </div>	
ANGLES +/- 3°		DRAWING\DDR\CDDR503XXXXXXX					
FOR MATERIALS AND FINISHES SEE NOTES		ANGLE OF PROJECTION					
REMOVE SHARP EDGES						<div> <div>A3</div> <div>C DDR5-03-X-X-X-XXX-X-X</div> <div>6</div> </div>	
DIMENSIONS							
— U.S. —	— INCHES —						
(METRIC)	(MM)	SCALE		NONE		SHEET 6 OF 6	