

BWP 2070W - Web panel

1060632

<https://www.phoenixcontact.com/us/products/1060632>



Please be informed that the data shown in this PDF document is generated from our online catalog. Please find the complete data in the user documentation. Our general terms of use for downloads are valid.



Web panel with 17.8 cm/7" TFT-display (analog resistive), 800 x 480 pixel(s) (WVGA), 16.7 million colors, i.MX 6DualLite, 1 GHz, 1x USB Host 2.0, 1 x Ethernet (10/100 Mbps), RJ45, Yocto/Linux and user software: QT browser. (bus system: without)

Commercial data

| | |
|--------------------------------------|---------------------|
| Item number | 1060632 |
| Packing unit | 1 pc |
| Sales key | DR17 |
| Product key | DRCEBF |
| Catalog page | Page 468 (C-6-2019) |
| GTIN | 4055626711652 |
| Weight per piece (including packing) | 688.5 g |
| Weight per piece (excluding packing) | 665.7 g |
| Customs tariff number | 84715000 |
| Country of origin | IN |

BWP 2070W - Web panel

1060632

<https://www.phoenixcontact.com/us/products/1060632>



Technical data

Product properties

| | |
|--------------|----------------|
| Product type | Operator panel |
|--------------|----------------|

Computer data

| | |
|---------------------|-----------------------|
| Processor | i.MX 6DualLite, 1 GHz |
| Operating system | Yocto/Linux |
| RAM | 1 GB DDR3 SDRAM |
| Data storage system | Flash eMMC, 4 GB |

Display

| | |
|-----------------------|---------------------------|
| Display type | 17.8 cm/7" TFT |
| Screen resolution | 800 x 480 Pixel(s) (WVGA) |
| Touch technology | analog resistive |
| Display lighting type | LED |
| Brightness | 350 cd/m ² |
| MTBF | 25000 h |
| Color spectrum | 16.7 million colors |
| Reading angle left | 70 ° |
| Reading angle right | 70 ° |
| Reading angle top | 50 ° |
| Reading angle bottom | 70 ° |

Software

| | |
|---------------|------------|
| User software | QT browser |
|---------------|------------|

Interfaces

| | |
|------------|----------------------------------|
| Interfaces | 1x USB Host 2.0 |
| Network | 1 x Ethernet (10/100 Mbps), RJ45 |
| Bus system | without |

System properties

| | |
|---------------|------------|
| User software | QT browser |
|---------------|------------|

Electrical properties

Supply

| | |
|-----------------------------|---------------|
| Power supply unit | 24 V DC ±15 % |
| Typical current consumption | 0.25 A |

Mounting

| | |
|---------------|----------------|
| Mounting type | Front mounting |
|---------------|----------------|

Material specifications

BWP 2070W - Web panel

1060632

<https://www.phoenixcontact.com/us/products/1060632>



| | |
|------------------|---------|
| Housing material | Plastic |
|------------------|---------|

Environmental and real-life conditions

Ambient conditions

| | |
|--|--------------------------------|
| Degree of protection | IP66 (front), IP20 (back) |
| Ambient temperature (operation) | 0 °C ... 50 °C |
| Ambient temperature (storage/transport) | -20 °C ... 85 °C |
| Permissible humidity (operation) | 10 % ... 95 % (non-condensing) |
| Permissible humidity (storage/transport) | 10 % ... 95 % (non-condensing) |
| Shock | DIN EN 60068-2-27 |
| Vibration (operation) | DIN EN 60068-2-6 |

Dimensions

External dimensions

| | |
|------------------------|--|
| Width / Height / Depth | 186 mm / 138 mm / 5 mm (Dimensions of the front plate) |
|------------------------|--|

Installation dimensions

| | |
|-------------------------------------|---|
| Width / Height / Installation depth | 175 mm / 127 mm / 31 mm (Installation cutout) |
|-------------------------------------|---|

BWP 2070W - Web panel

1060632

<https://www.phoenixcontact.com/us/products/1060632>



Approvals

To download certificates, visit the product detail page: <https://www.phoenixcontact.com/us/products/1060632>



EAC

Approval ID: RU*-DE*08.B.01618



EAC-RoHS

Approval ID: RU*-DE*35.B.00394/20



cUL Listed

Approval ID: FILE E 196811



UL Listed

Approval ID: FILE E 196811

cULus Listed

BWP 2070W - Web panel

1060632

<https://www.phoenixcontact.com/us/products/1060632>



Classifications

ECLASS

| | |
|-------------|----------|
| ECLASS-11.0 | 27330201 |
| ECLASS-12.0 | 27330201 |
| ECLASS-13.0 | 27330201 |

ETIM

| | |
|----------|----------|
| ETIM 8.0 | EC001412 |
|----------|----------|

UNSPSC

| | |
|-------------|----------|
| UNSPSC 21.0 | 43211900 |
|-------------|----------|

BWP 2070W - Web panel

1060632

<https://www.phoenixcontact.com/us/products/1060632>



Accessories

TOUCH PEN - Touch pen

2701379

<https://www.phoenixcontact.com/us/products/2701379>

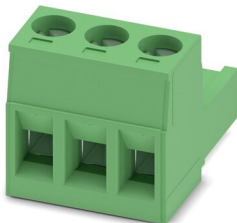


Touch pen for analog-resistive HMI, silver coated. Delivery includes self-adhesive pen holder.

MSTB 2,5/ 3-ST-5,08 - PCB connector

1757022

<https://www.phoenixcontact.com/us/products/1757022>



PCB connector, nominal cross section: 2.5 mm², color: green, nominal current: 12 A, rated voltage (III/2): 320 V, contact surface: Tin, contact connection type: Socket, number of potentials: 3, number of rows: 1, number of positions: 3, number of connections: 3, product range: MSTB 2,5/...-ST, pitch: 5.08 mm, connection method: Screw connection with tension sleeve, screw head form: L Slotted, conductor/PCB connection direction: 0 °, locking clip: - Locking clip, plug-in system: COMBICON MSTB 2,5, locking: without, mounting: without, type of packaging: packed in cardboard

Phoenix Contact 2023 © - all rights reserved

<https://www.phoenixcontact.com>

Phoenix Contact USA
586 Fulling Mill Road
Middletown, PA 17057, United States
(+717) 944-1300
info@phoenixcon.com