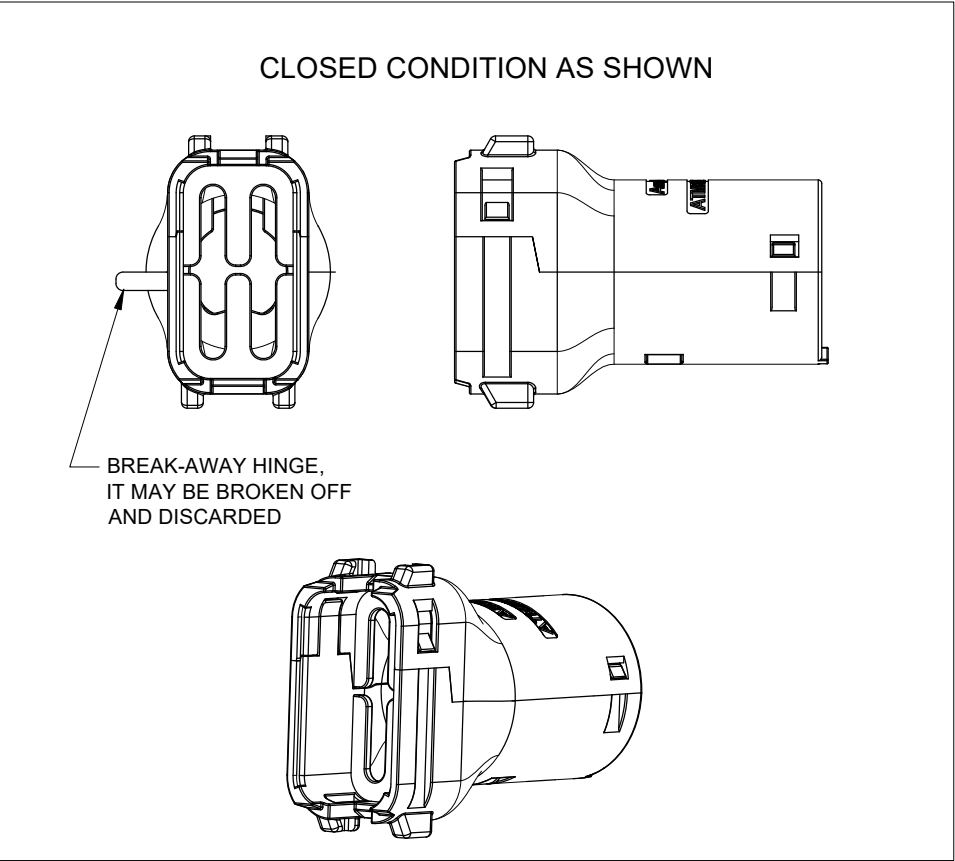
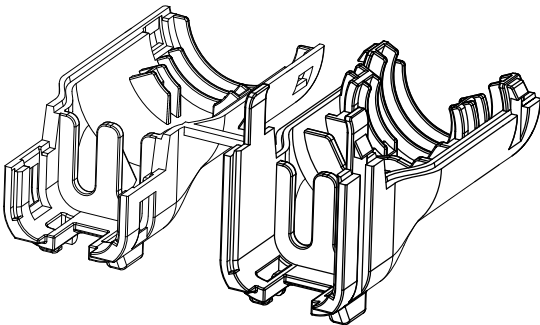
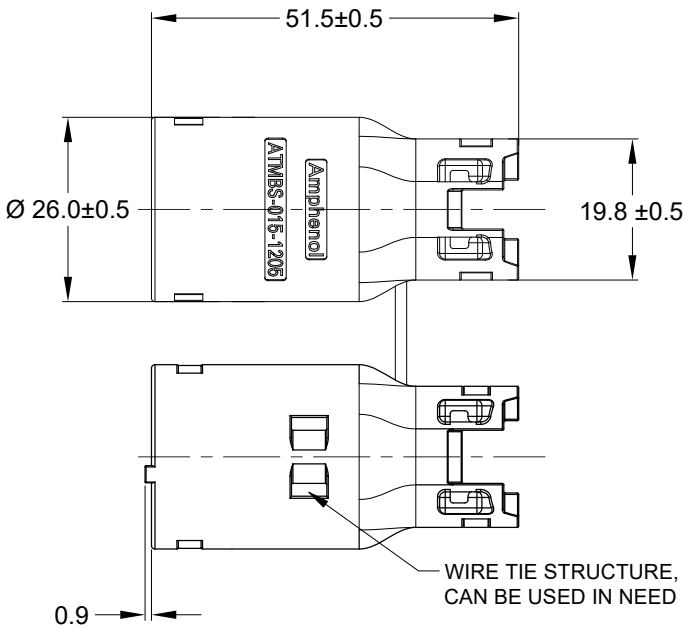
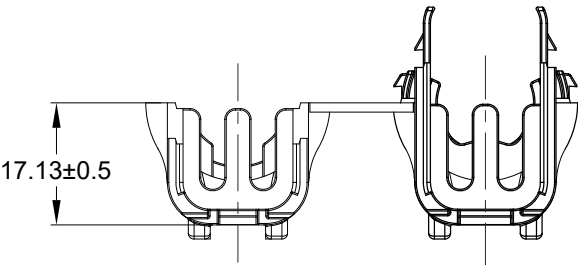
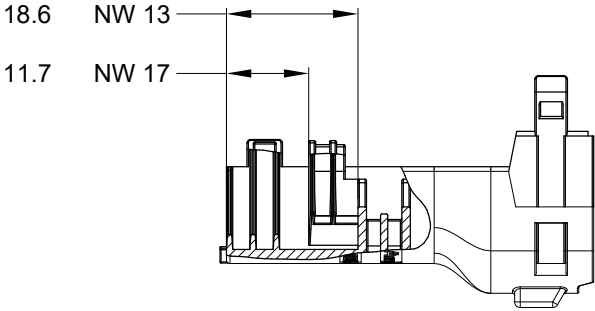


REVISIONS					
REV	ECO	DESCRIPTION	DATE	BY	APPR
A1	-	RELEASE NEW DRAWING	11/JUL/22	VITO	TOMMY



NOTES: UNLESS OTHERWISE SPECIFIED

1. MATERIAL: PA66; COLOR: BLACK .
2. USE WITH ATM06-12SX- * PLUGS.
(X =A,B,C,D,KEYS; * =MODIFICATIONS AND COLORS, EXCEPT STRAIN RELIEF)
3. CABLE EXIT DESIGNED FOR CORRUGATED TUBE NW 13 AND 17.
4. RoHS COMPLIANT
5. ALL DIMENSIONS ARE FOR REFERENCE USE ONLY.

	ATMBS-015-1205	REF:1028-015-1205	
QUANTITY	PART NUMBER	DESCRIPTION	ITEM
MATERIALS LIST			
UNLESS OTHERWISE SPECIFIED 1) All dimensions are in metric(mm). 2) Tolerances are as follows: 1 PL DEC ±0.30 2 PL DEC ±0.15 3 PL DEC ±0.08 3) Note reference =		SIGNATURES DRAWN: VITO.LI CHECKED: SULLEN.ZHANG ENGINEER: APPROVAL: TOMMY.XIE CUSTOMER: THIS DRAWING IS SUPPLIED FOR INFORMATION ONLY. DESIGN FEATURES, SPECIFICATIONS AND PERFORMANCE DATA SHOWN HEREON ARE THE PROPERTY OF THE AMPHENOL CORPORATION. NO RIGHTS OF REPRODUCTION ARE IMPLIED. ALL DIMENSIONS ARE SUBJECT TO NORMAL MANUFACTURING VARIATIONS.	DATE 11/JUL/22 12/JUL/22 13/JUL/22
MATERIAL SPECIFICATIONS: WEIGHT:10.10g		Amphenol Sine Systems - www.amphenol-sine.com 44724 Morley Drive Clinton Township, MI 48036	
PROCESS SPECIFICATIONS:		SIZE B C-	REVISION A1
NEXT ASSY:		DWG NO: ATMBS-015-1205	SHEET 1 OF 1

TITLE: BACKSHELL,PLUG, 12 POS, ATM ,STRAIGHT,BLACK
DWG NO: ATMBS-015-1205
REV: A1
SH: 1
OF: 1