

HC-D 7-TFL-48/O1M20S - Housing



1604891

<https://www.phoenixcontact.com/us/products/1604891>

Please be informed that the data shown in this PDF document is generated from our online catalog. Please find the complete data in the user documentation. Our general terms of use for downloads are valid.



HEAVYCON sleeve housing D7, for single locking latch, height 48 mm, with gland, lateral cable outlet, zinc die-cast

Commercial data

Item number	1604891
Packing unit	1 pc
Note	Made to order (non-returnable)
Sales key	BF55
Product key	BF7AAE
Catalog page	Page 491 (C-4-2015)
GTIN	4017918881474
Weight per piece (including packing)	64.09 g
Weight per piece (excluding packing)	64.09 g
Customs tariff number	85389099
Country of origin	DE

HC-D 7-TFL-48/O1M20S - Housing

1604891

<https://www.phoenixcontact.com/us/products/1604891>



Technical data

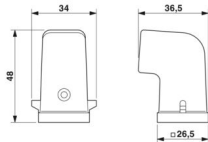
Notes

General	for contact inserts HC-A03, A04, D07, D08, Q02, Q03, Q04, Q05, Q07, Q12
---------	---

Product properties

Product type	Housing with locking latch
Housing type	Sleeve housing
Application	Standard
Type	D7
No. of cable outlets	1
Type of the screw connection	1x M20
Shielded	no
Cable outlet	lateral
Pg screw connection	none

Dimensions

Dimensional drawing	
Width	36.5 mm
Height	48 mm
Length	26.5 mm

Material specifications

Housing material	Zinc die-cast
Housing surface material	Powder-coated, gray

Mechanical properties

Mechanical data	
Type of the screw connection	1x M20
Locking type	Pin

Environmental and real-life conditions

Ambient conditions	
Degree of protection	IP54 IP65 (with sealing screw)
Ambient temperature (operation)	-40 °C ... 125 °C

HC-D 7-TFL-48/O1M20S - Housing

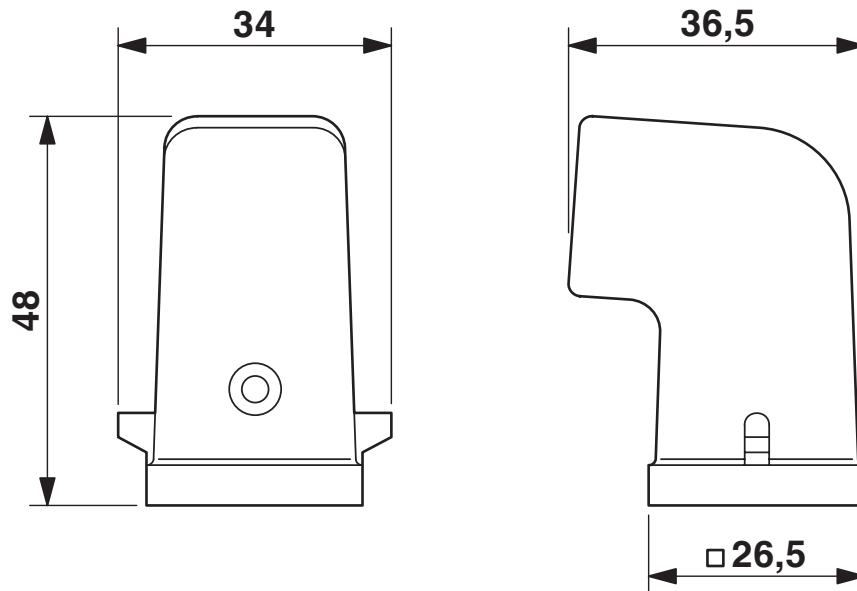
1604891

<https://www.phoenixcontact.com/us/products/1604891>



Drawings

Dimensional drawing



Mounting cutout

HC-D 7-TFL-48/O1M20S - Housing



1604891

<https://www.phoenixcontact.com/us/products/1604891>

Classifications

ECLASS

ECLASS-11.0	27440202
ECLASS-13.0	27440202

UNSPSC

UNSPSC 21.0	31261501
-------------	----------

HC-D 7-TFL-48/O1M20S - Housing

1604891

<https://www.phoenixcontact.com/us/products/1604891>



Environmental product compliance

China RoHS	
Environment friendly use period (EFUP)	EFUP-E
	No hazardous substances above the limits
EU REACH SVHC	
REACH candidate substance (CAS No.)	No substance above 0.1 wt%

HC-D 7-TFL-48/O1M20S - Housing

1604891

<https://www.phoenixcontact.com/us/products/1604891>

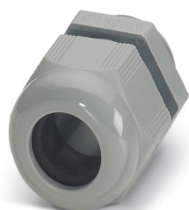


Accessories

G-INS-M20-S68N-PNES-GY - Cable gland

1411125

<https://www.phoenixcontact.com/us/products/1411125>



Cable gland, material for screw connection: PA, application: Standard, external cable diameter 6 mm ... 12 mm, shielding: no, connecting thread: M20 x 1.5, color: silver-grey RAL 7001

G-INS-M20-S68N-PNES-BK - Cable gland

1411133

<https://www.phoenixcontact.com/us/products/1411133>



Cable gland, material for screw connection: PA, application: Standard, external cable diameter 6 mm ... 12 mm, shielding: no, connecting thread: M20 x 1.5, color: jet black RAL 9005

HC-D 7-TFL-48/O1M20S - Housing

1604891

<https://www.phoenixcontact.com/us/products/1604891>



G-INS-M20-S68N-NNES-S - Cable gland

1411163

<https://www.phoenixcontact.com/us/products/1411163>



Cable gland, material for screw connection: Brass, nickel-plated, application: Standard, external cable diameter 6 mm ... 12 mm, shielding: no, connecting thread: M20 x 1.5, color: silver, with O-ring

HC-M-KV-M20(11-16) - Cable gland

1645998

<https://www.phoenixcontact.com/us/products/1645998>



Metal screw connection up to 5 bar, thread length: 6 mm, cable diameter: 11 - 16 mm, WAF 27, screw connection: M20

HC-D 7-TFL-48/O1M20S - Housing

1604891

<https://www.phoenixcontact.com/us/products/1604891>



G-INSEC-M20-S68N-NCRS-S - Cable gland

1411189

<https://www.phoenixcontact.com/us/products/1411189>



Cable gland, material for screw connection: Brass, nickel-plated, application: EMC, external cable diameter 9 mm ... 13 mm, shielding: yes, connecting thread: M20 x 1.5, color: silver, with O-ring

G-INESR-M20-S68N-NEPDS-S - Cable gland

1415192

<https://www.phoenixcontact.com/us/products/1415192>



Cable gland, material for screw connection: Brass, nickel-plated, application: Standard, external cable diameter 6 mm ... 13 mm, shielding: no, connecting thread: M20 x 1.5, color: silver, with external strain relief, with O-ring

HC-D 7-TFL-48/O1M20S - Housing

1604891

<https://www.phoenixcontact.com/us/products/1604891>



HC-M-KV-T-M20 - Cable gland

1646188

<https://www.phoenixcontact.com/us/products/1646188>

Metal screw connection with cable bend protection and strain relief, thread length: 6 mm, cable sealing area: 7.5 - 15 mm, clamping area: 10 - 16 mm, SW 24, screw connection: M20



REDUC-M-KV-M20/M16 - Reducing adapter

1647611

<https://www.phoenixcontact.com/us/products/1647611>

Reducing adapter, connecting thread: M20 x 1.5, color: silver, with O-ring



HC-D 7-TFL-48/O1M20S - Housing

1604891

<https://www.phoenixcontact.com/us/products/1604891>



ENLAR-M-KV-M20/M25 - Extension adapter

1647666

<https://www.phoenixcontact.com/us/products/1647666>

Extension adapter, connecting thread: M20 x 1.5, color: silver, with O-ring



HC-M-BS-M20 - Screw plug

1645846

<https://www.phoenixcontact.com/us/products/1645846>

Screw plug, material for screw connection: Brass, nickel-plated, connecting thread: M20 x 1.5, color: silver



HC-D 7-TFL-48/O1M20S - Housing

1604891

<https://www.phoenixcontact.com/us/products/1604891>



HC-D 7-DS-IP65 - Sealing screw

1686229

<https://www.phoenixcontact.com/us/products/1686229>



Sealing screw, size: Countersunk head, IP67, replacement part for D7 size HEAVYCON housing

Phoenix Contact 2024 © - all rights reserved

<https://www.phoenixcontact.com>

Phoenix Contact USA
586 Fulling Mill Road
Middletown, PA 17057, United States
(+717) 944-1300
info@phoenixcon.com