

## Han K 4/2 Pin Male Insert

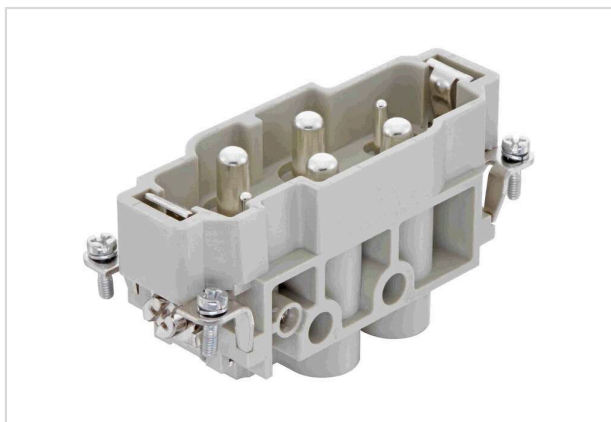


Image is for illustration purposes only. Please refer to product description.

Part number	09 38 006 2601
Specification	Han K 4/2 Pin Male Insert
HARTING eCatalogue	<a href="https://b2b.harting.com/09380062601">https://b2b.harting.com/09380062601</a>

### Identification

Category	Inserts
Series	Han-Com®
Identification	Han® K 4/2

### Version

Termination method	Screw termination
Gender	Male
Size	16 B
Number of contacts	6
Number of signal contacts	2
Number of power contacts	4
PE contact	Yes

### Technical characteristics

Conductor cross-section	1.5 ... 16 mm <sup>2</sup> Power 0.5 ... 2.5 mm <sup>2</sup> Signal
Rated current (signal)	16 A
Rated voltage (signal)	400 V
Rated impulse voltage (signal)	6 kV
Pollution degree (signal)	3
Rated current (power)	80 A
Rated voltage (power)	830 V
Rated impulse voltage (power)	8 kV



**Pushing Performance**  
 Since 1945

## Technical characteristics

Pollution degree (power)	3
Rated current acc. to UL (signal)	16 A
Rated voltage acc. to UL (signal)	600 V
Rated current acc. to UL (Power)	80 A
Rated voltage acc. to UL (Power)	600 V
Rated current acc. to CSA (signal)	16 A
Rated voltage acc. to CSA (signal)	300 V
Rated current acc. to CSA (Power)	80 A
Rated voltage acc. to CSA (Power)	300 V
Insulation resistance	$>10^{10} \Omega$
Contact resistance	$\leq 0.3 \text{ m}\Omega$
Contact resistance, signal area	$\leq 1 \text{ m}\Omega$
Stripping length	14 mm
	7.5 mm Signal
Tightening torque	1.2 Nm @ 1.5 mm <sup>2</sup>
	2 Nm @ 2.5 mm <sup>2</sup>
	3 Nm @ 4 mm <sup>2</sup>
	3 Nm @ 6 mm <sup>2</sup>
	3 Nm @ 10 mm <sup>2</sup>
	3 Nm @ 16 mm <sup>2</sup>
	0.5 Nm Signal
Limiting temperature	-40 ... +125 °C
Mating cycles	$\geq 500$

## Material properties

Material (insert)	Polycarbonate (PC)
Colour (insert)	RAL 7032 (pebble grey)
Material (contacts)	Copper alloy
Surface (contacts)	Silver plated
Material flammability class acc. to UL 94	V-0
RoHS	compliant with exemption
RoHS exemptions	6(c): Copper alloy containing up to 4 % lead by weight
ELV status	compliant with exemption
China RoHS	50
REACH Annex XVII substances	Not contained
REACH ANNEX XIV substances	Not contained



Pushing Performance  
Since 1945

## Material properties

REACH SVHC substances	Yes
REACH SVHC substances	Lead
ECHA SCIP number	5dbb3851-b94e-4e88-97a1-571845975242
California Proposition 65 substances	Yes
California Proposition 65 substances	Lead
Fire protection on railway vehicles	EN 45545-2 (2020-08)
Requirement set with Hazard Levels	R22 (HL 1-3) R23 (HL 1-3)

## Specifications and approvals

Specifications	IEC 60664-1 IEC 61984
UL / CSA	UL 1977 ECBT2.E235076 CSA-C22.2 No. 182.3 ECBT8.E235076
Approvals	DNV GL

## Commercial data

Packaging size	1
Net weight	50 g
Country of origin	Romania
European customs tariff number	85366990
GTIN	5713140056220
ETIM	EC000438
eCl@ss	27440205 Contact insert for industrial connectors