

CUSTOMER PRINT

PART NUMBER: CARA16280XPPXXX90

- NOTES:
1. FINISHED CABLE ASSEMBLY TO BE COILED
 2. OVERMOLD BOOT MATERIAL: UV PBT, BLACK
 3. ELECTRICAL TEST: 100% CONTINUITY
 4. ALL DIMENSIONS ARE REFERENCE ONLY EXCEPT WHEN NOTED WITH TOLERANCE

| ASS'Y P/N | NO. OF POS. |
|-------------------|-------------|
| CARA162802PPXXX90 | 2 |
| CARA162803PPXXX90 | 3 |
| CARA16280XPPXXX90 | |

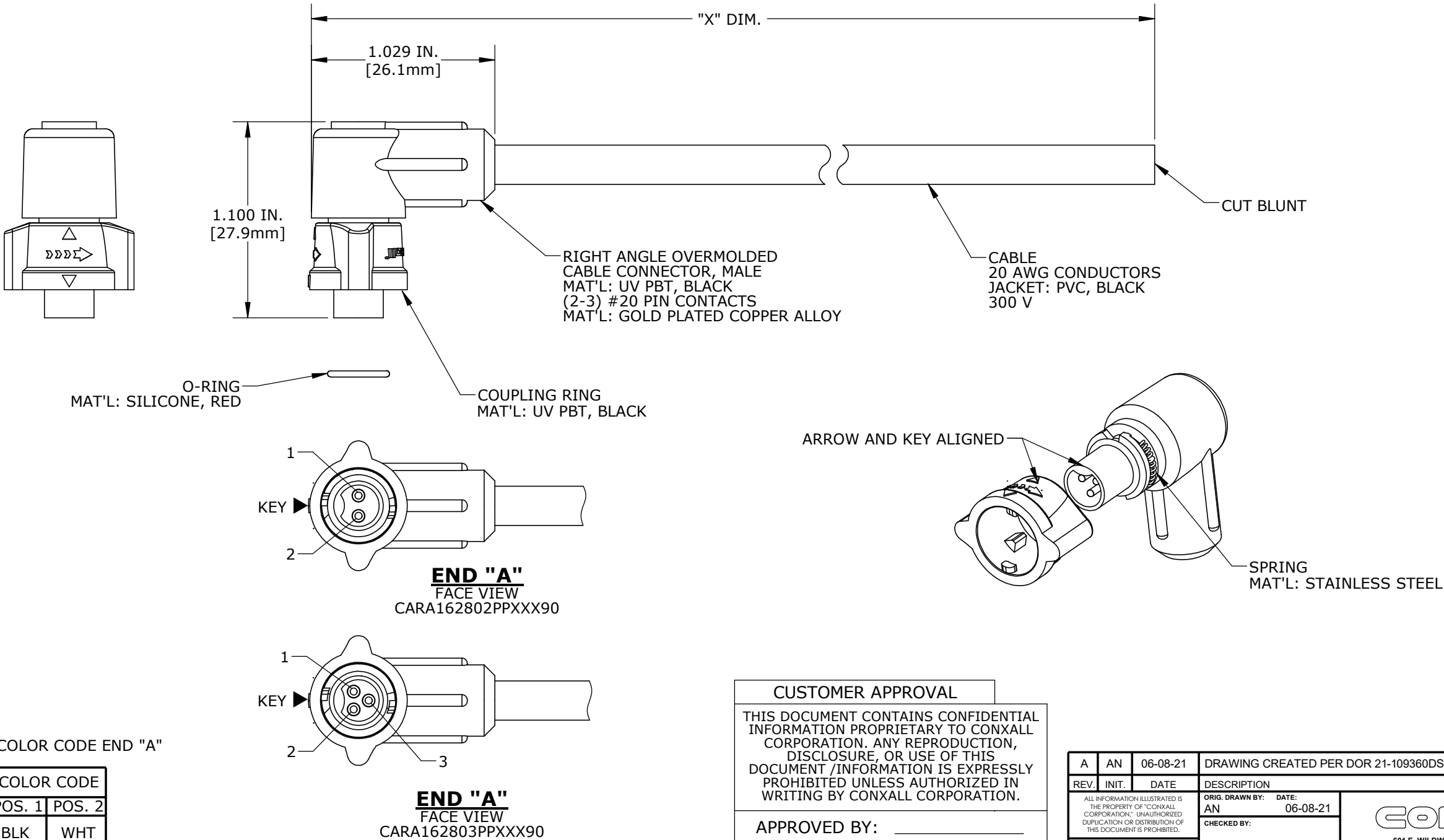
CABLE LENGTH IN "INCHES"

NO. OF POSITIONS

| ASS'Y P/N | "X" DIM. |
|-------------------|---|
| CARA162802PP03990 | 3 FT. 3 1/2 IN. ± 2 IN. [1M ±50.8mm] |
| CARA162803PP03990 | |
| CARA162802PP07990 | 6 FT. 7 IN. ± 2 IN. [2M ±50.8mm] |
| CARA162803PP07990 | |
| CARA162802PP19790 | 16 FT. 5 IN. ± 4 IN. [5M ±101.6mm] |
| CARA162803PP19790 | |
| CARA162802PP39490 | 32 FT. 9 3/4 IN. ± 8 IN. [10M ±203.2mm] |
| CARA162803PP39490 | |
| CARA16280XPPXXX90 | |

CABLE LENGTH IN "INCHES"

NO. OF POSITIONS



DIMENSIONS IN BRACKETS [] ARE METRIC

CUSTOMER APPROVAL


THIS DOCUMENT CONTAINS CONFIDENTIAL INFORMATION PROPRIETARY TO CONXALL CORPORATION. ANY REPRODUCTION, DISCLOSURE, OR USE OF THIS DOCUMENT /INFORMATION IS EXPRESSLY PROHIBITED UNLESS AUTHORIZED IN WRITING BY CONXALL CORPORATION.

APPROVED BY: _____

DATE: _____

RoHS COMPLIANT

| ASSY P/N | CABLE | COLOR CODE END "A" | | |
|-------------------|----------------------------|--------------------|--------|--------|
| CARA162802PPXXX90 | 2/20 AWG O.D. 0.215 REF | COLOR CODE | | |
| | | POS. 1 | POS. 2 | |
| | | BLK | WHT | |
| CARA162803PPXXX90 | 3/20 AWG O.D. 0.220 REF | WIRE COLOR CODE | | |
| | | POS. 1 | POS. 2 | POS. 3 |
| | | BLK | WHT | GRN |

| | | | | | | | |
|--|---|----------------|-------------------------------------|---|---|--|--|
| A | AN | 06-08-21 | DRAWING CREATED PER DOR 21-109360DS | | | | |
| REV | INIT. | DATE | DESCRIPTION | | | | |
| ALL INFORMATION ILLUSTRATED IS THE PROPERTY OF "CONXALL CORPORATION". UNAUTHORIZED DUPLICATION OR DISTRIBUTION OF THIS DOCUMENT IS PROHIBITED. | ORIG. DRAWN BY: AN | | DATE: 06-08-21 | |  601 E. WILDWOOD VILLA PARK, IL 60181 | | |
| | CHECKED BY: | | | | | | |
| | ALL UNITS ARE IN FEET, INCHES, FRACTION OF INCHES AND DECIMALS. | APPROVED BY: | | TITLE: CABLE ASSEMBLY (2-3) #20 PIN CONTACTS INSTA-CLICK™ MICRO-CON-X STANDARD PRODUCT | | | |
| SCALE NTS | | SIZE B | SHEET 1 OF 1 | | CUSTOMER: | | |
| FILE: CARA16280XPPXXX90 | | DIRECTORY: SLW | | | | | |
| PART NUMBER: CARA16280XPPXXX90 | | REV A | | | | | |
| ▷ = CRITICAL CHARACTERISTIC FLAG PER SPEC. XXXX | | | | | | | |